

# Ladera

## Davidson Homes in San Antonio, TX

Welcome to Ladera, where community living meets Texas charm. Nestled in beautiful San Antonio, our homes boast stunning views, remarkable amenities, and the welcoming spirit of the south.

Ladera offers community features designed with your family in mind. Residents can enjoy dips in the community pool, take a stroll on the trails, or embrace mother nature with a visit to our Green Belt. For convenience, you'll find the largest H.E.B. supermarket in Texas less than a mile away, perfect for all your shopping needs.

### Features

Clubhouse  
Playground  
Junior Olympic Pool

### Local Schools

Ladera Elementary  
Medina Valley Middle  
Medina Valley High  
Medina Valley ISD



Community Address

14410 Costa Leon

New Homes

05

Floor Plans

06

Homes from the

\$390s

Copyright 2024 Davidson Homes, Inc. | All Rights Reserved | Davidson Homes is a leading builder of quality new homes across the Southeast. Davidson Homes reserves the right to adjust items listed without prior notice or obligation. Such items may include, but are not limited to, options, included features and community information, pricing, amenities, square footage, terms or availability. Features, options, floor plans, elevations, colors, dimensions and photographs are for illustration purposes and may vary from homes built. Please see your community specialist for details. Equal housing lender. Last Updated 05/20/2024.





Ladera in San Antonio, TX

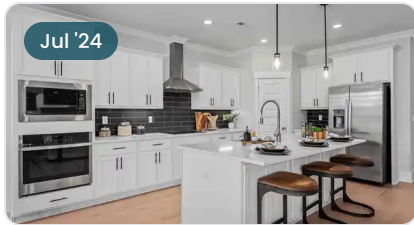
## Quick Move-In Homes

UPDATED  
05/20/2024

HOMES  
05

Marcela C. & Lauren C.  
Call (210) 934-2270

COMMUNITY ADDRESS  
14410 Costa Leon



Jul '24

~~\$419,990~~ **\$394,990**

4 Beds 2.5 Baths 2,188 Sq Ft

14458 Verde Azul | #17-09

The Rockford E Plan



Aug '24

**\$434,990**

3 Beds 2 Baths 2,295 Sq Ft

14422 Verde Azul | #25-09

The Lanier G Plan



Aug '24

**\$389,990**

4 Beds 2.5 Baths 2,188 Sq Ft

2874 Tortuga Verde | #27-07

The Rockford F Plan



Aug '24

**\$489,990**

5 Beds 4.5 Baths 3,072 Sq Ft

14483 Costa Leon | #24-07

The Danbury G Plan



Aug '24

~~\$509,990~~ **\$494,990**

5 Beds 3 Baths 3,420 Sq Ft

2906 Tortuga | #7-08

The Jennings F Plan



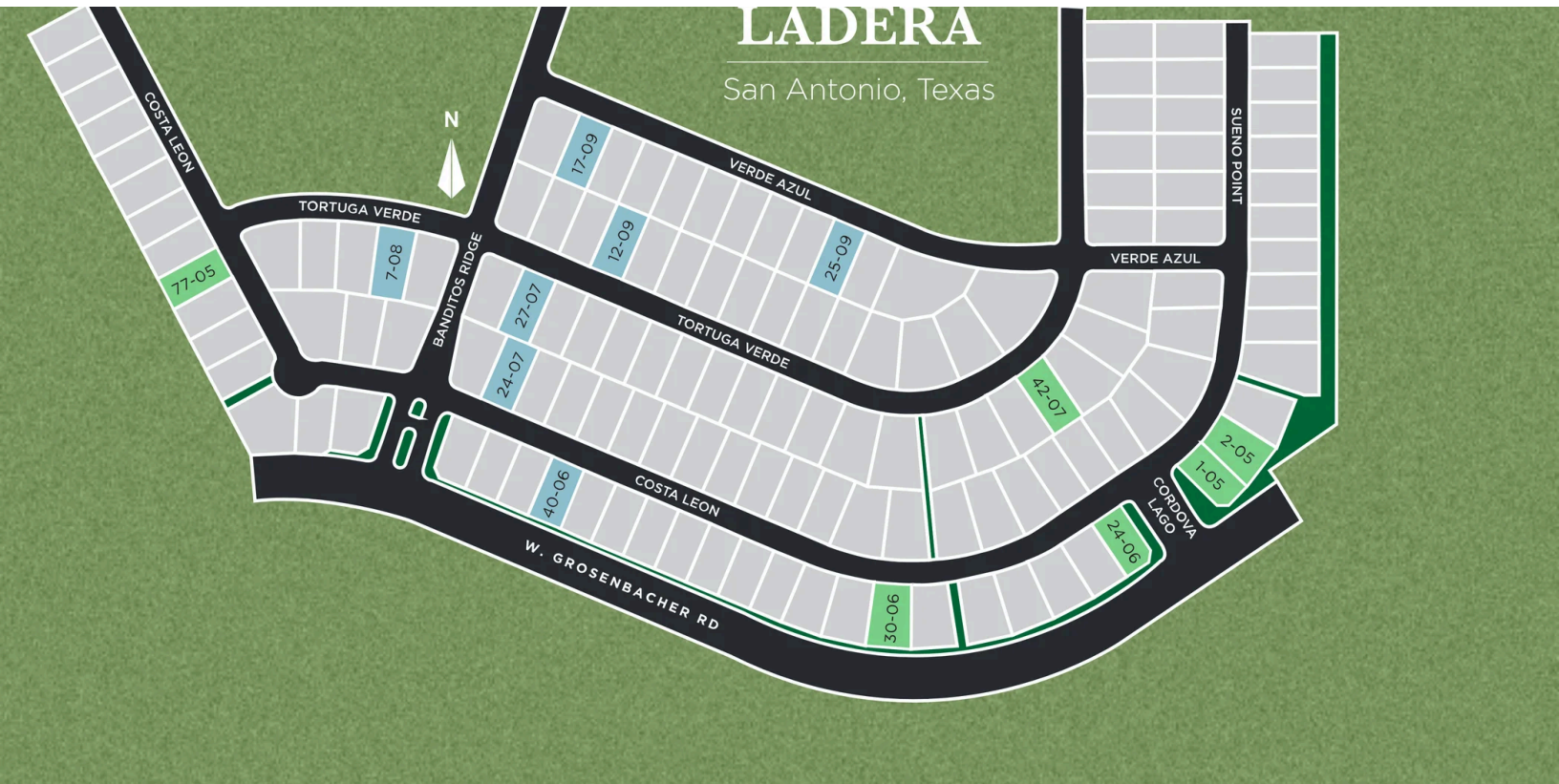


Ladera in San Antonio, TX

# Community Homesite Map

Marcela C. & Lauren C.

Call (210) 934-2270



 QUICK MOVE-IN

 COMING SOON

 AVAILABLE

## Featured Homes for Sale



**The Rockford E**  
14458 Verde Azul  
**\$394,990**

#17-09



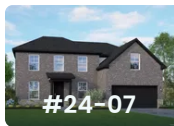
**The Lanier G**  
14422 Verde Azul  
**\$434,990**

#25-09



**The Rockford F**  
2874 Tortuga Verde  
**\$389,990**

#27-07



**The Danbury G**  
14483 Costa Leon  
**\$489,990**

#24-07



**The Jennings F**  
2906 Tortuga  
**\$494,990**

#7-08





# The Rockford G

## Exterior Options

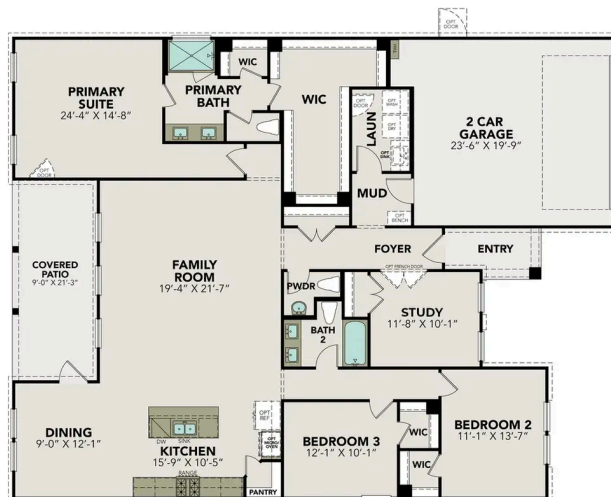


**BEDS**  
**3**

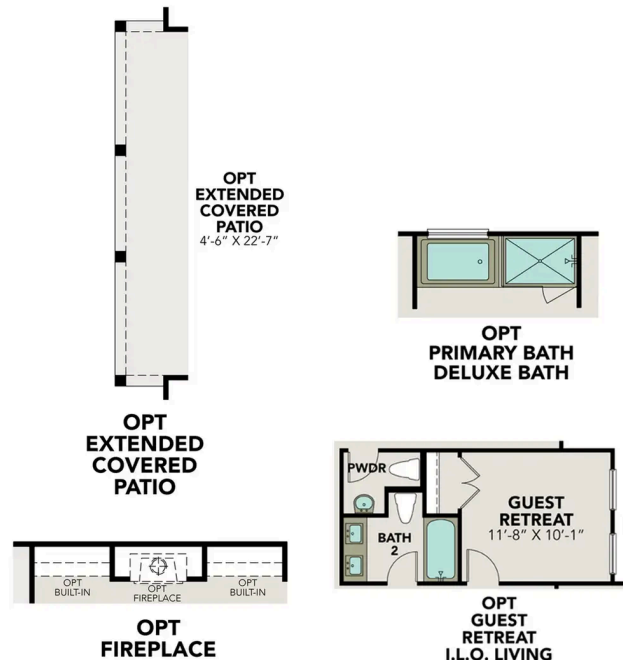
**BATHS**  
**2.5**

**SQ FT**  
**2,188**

**PARKING**  
**2**



**MAIN FLOOR PLAN**



**OPTIONS**



## The Lanier H

### Exterior Options



**BEDS**  
**3**

**BATHS**  
**2**

**SQ FT**  
**2,295**

**PARKING**  
**3**



MAIN FLOOR PLAN



OPTIONS



OPTIONS

## The Harrison D

### Exterior Options

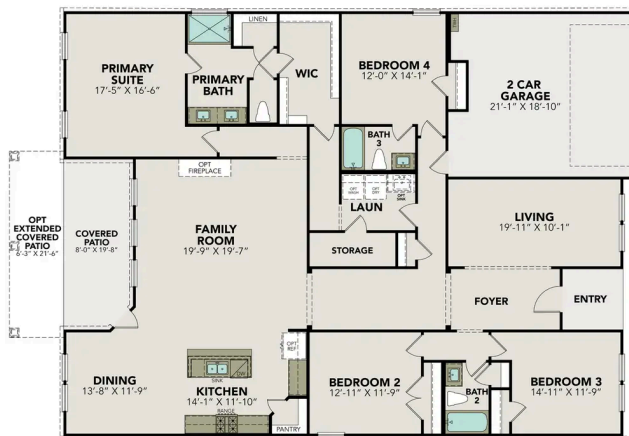


**BEDS**  
**4**

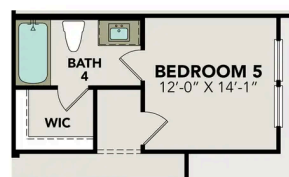
**BATHS**  
**3**

**SQ FT**  
**2,661**

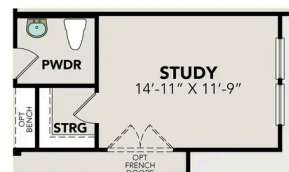
**PARKING**  
**2**



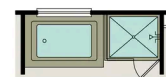
MAIN FLOOR PLAN



OPT  
BEDROOM 5/  
BATH 4



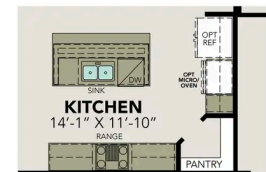
OPT  
STUDY/  
POWDER



OPT  
OWNER'S  
DELUXE BATH



OPT  
FIREPLACE



OPT  
GOURMET  
KITCHEN

OPTIONS

# The Danbury I

## Exterior Options

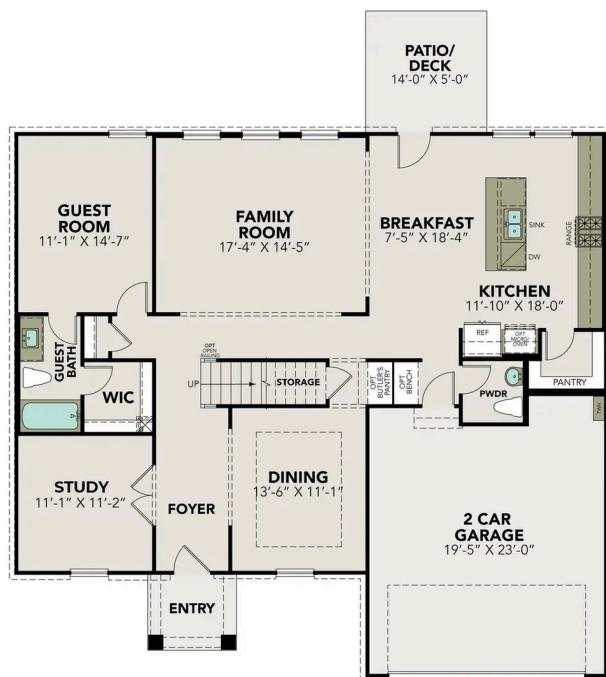


**BEDS**  
**5**

**BATHS**  
**4.5**

**SQ FT**  
**3,072**

**PARKING**  
**2**



**MAIN FLOOR PLAN**



**UPPER FLOOR PLAN**



# The Danbury I

Behind the Danbury's gorgeous exterior lies a massive layout, featuring five bedrooms and inviting living areas. With the kitchen's expansive counter space and convenient sit-in island, you'll want to make all your meals at home. The upstairs primary suite showcases a luxurious bathroom and large walk-in closet for plenty of storage space.

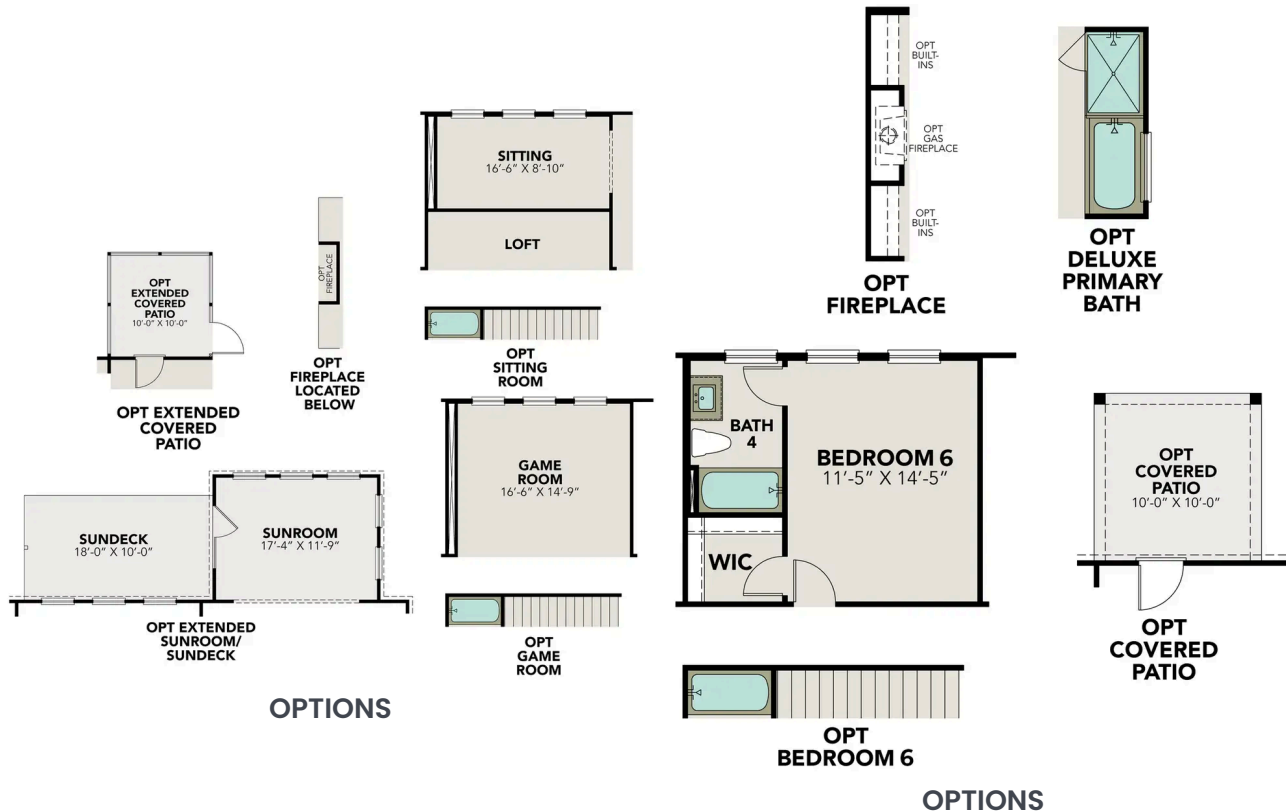
Make it your own with The Danbury's flexible floor plan. Just know that offerings vary by location, so please discuss our standard features and upgrade options with your community's agent.

BEDS  
**5**

BATHS  
**4.5**

SQ FT  
**3,072**

GARAGE  
**2**



# The Jennings G

## Exterior Options

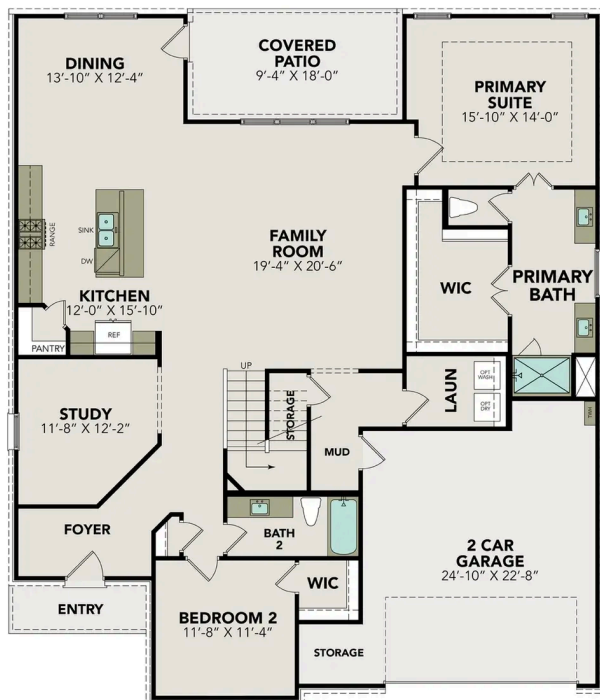


**BEDS**  
**5**

**BATHS**  
**3**

**SQ FT**  
**3,420**

**PARKING**  
**2**



**MAIN FLOOR PLAN**



**UPPER FLOOR PLAN**

# The Jennings G

From its open layout to its optional media room, this home just feels luxurious. Featuring a main floor primary suite and a massive, open-space gourmet kitchen, family room and dining area, The Jennings has everything you'll need. We've even added a second main-floor bedroom, a rare option. With three upstairs bedrooms, a study and a guest room, The Jennings feels even larger than its square footage.

Make it your own with The Jennings' flexible floor plan. Just know that offerings vary by location, so please discuss our standard features and upgrade options with your community's agent.

BEDS  
**5**

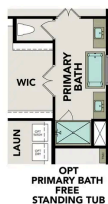
BATHS  
**3**

SQ FT  
**3,420**

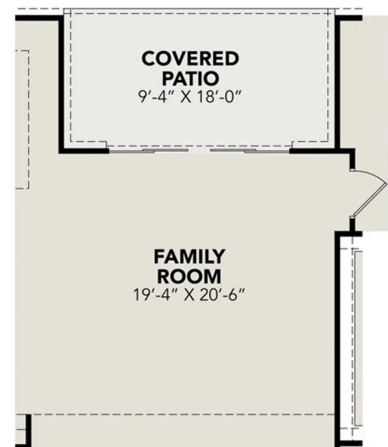
GARAGE  
**2**



OPTIONS



OPTIONS



OPT  
FAMILY ROOM  
DOUBLE SLIDING  
GLASS DOOR

OPTIONS



# The Garner A

## Exterior Options

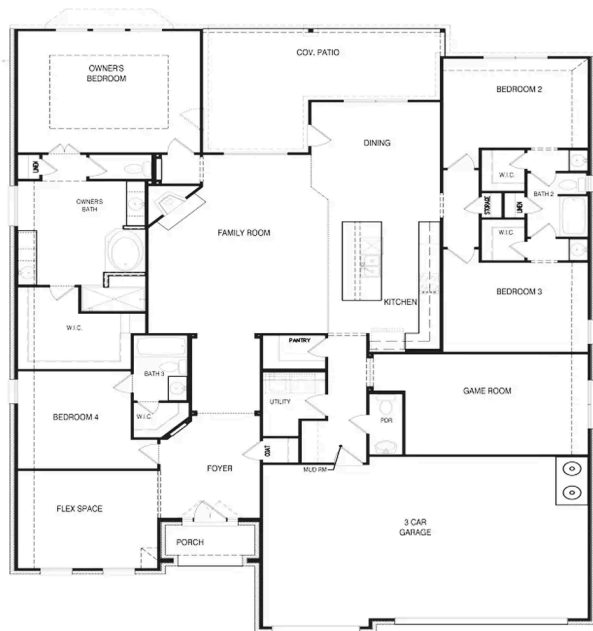


**BEDS**  
**4**

**BATHS**  
**3.5**

**SQ FT**  
**2,916**

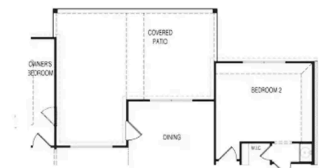
**PARKING**  
**3**



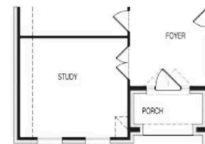
**MAIN FLOOR PLAN**



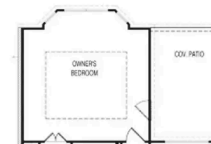
**LUXURY OWNERS BATH OPTION**



**EXTENDED COV. PATIO OPTION**



**STUDY OPTION**



**OWNERS BAY OPTION**

**OPTIONS**