

# Pikes Ridge

Davidson Homes in Meridianville, AL

Welcome to Pikes Ridge, a beautiful new home community in Meridianville, Alabama. Built by Davidson Homes, Pikes Ridge offers the perfect blend of peaceful living and easy access to all the amenities you need.

With easy access to Downtown Huntsville, Redstone Arsenal, Alabama A&M University, and Madison, Pikes Ridge provides the ideal location for families, professionals, and students alike. Whether you're commuting to work, running errands, or enjoying a night out on the town, you'll appreciate the convenience of Pikes Ridge.

## Features

Gas Available  
3-car Garage Options  
Near Public Golf Courses

## Local Schools

Madison County School Di...  
Lynn Fanning Elementary  
Moores Mill Intermediate  
Meridianville Middle  
Hazel Green High

## Utilities

Electric: Huntsville Utilities  
Gas: Huntsville Utilities  
Water: Madison County W...



Community Address

126 Slade Thomas Dr

New Homes

06

Floor Plans

11

Homes from the

\$310s

Copyright 2024 Davidson Homes, Inc. | All Rights Reserved | Davidson Homes is a leading builder of quality new homes across the Southeast. Davidson Homes reserves the right to adjust items listed without prior notice or obligation. Such items may include, but are not limited to, options, included features and community information, pricing, amenities, square footage, terms or availability. Features, options, floor plans, elevations, colors, dimensions and photographs are for illustration purposes and may vary from homes built. Please see your community specialist for details. Equal housing lender. Last Updated 05/20/2024.





Pikes Ridge in Meridianville, AL

# Quick Move-In Homes

Jessica Craig  
Call (256) 269-7337



LIMITED TIME

Save **25%** on  
Design Upgrades!

PLUS, ENJOY  
**\$5,000\***  
TO USE AS YOU CHOOSE!

LEARN MORE →

\*See link for terms/conditions.

UPDATED  
**05/20/2024**

HOMES  
**06**

COMMUNITY ADDRESS  
**126 Slade Thomas Dr**

Coming Soon



**\$384,762**

**4 Beds 3 Baths 2,411 Sq Ft**

107 Ackert Drive | #95

The Lanier Plan

Coming Soon



**\$406,647**

**4 Beds 3.5 Baths 2,678 Sq Ft**

103 Ackert Drive | #93

The Harrison B Plan

Jun '24



**\$342,277**

**3 Beds 2 Baths 2,076 Sq Ft**

111 Ackert Drive | #97

The Kirkland Plan

Jun '24



**\$385,006**

**4 Beds 3 Baths 2,411 Sq Ft**

181 Slade Thomas Drive | #69

The Lanier Plan

Jun '24



**\$363,077**

**3 Beds 2.5 Baths 2,286 Sq Ft**

109 Ackert Drive | #96

The Rockford Plan

Aug '24



**\$428,307**

**3 Beds 2.5 Baths 2,656 Sq Ft**

105 Ackert Drive | #94

The Rockford B Plan



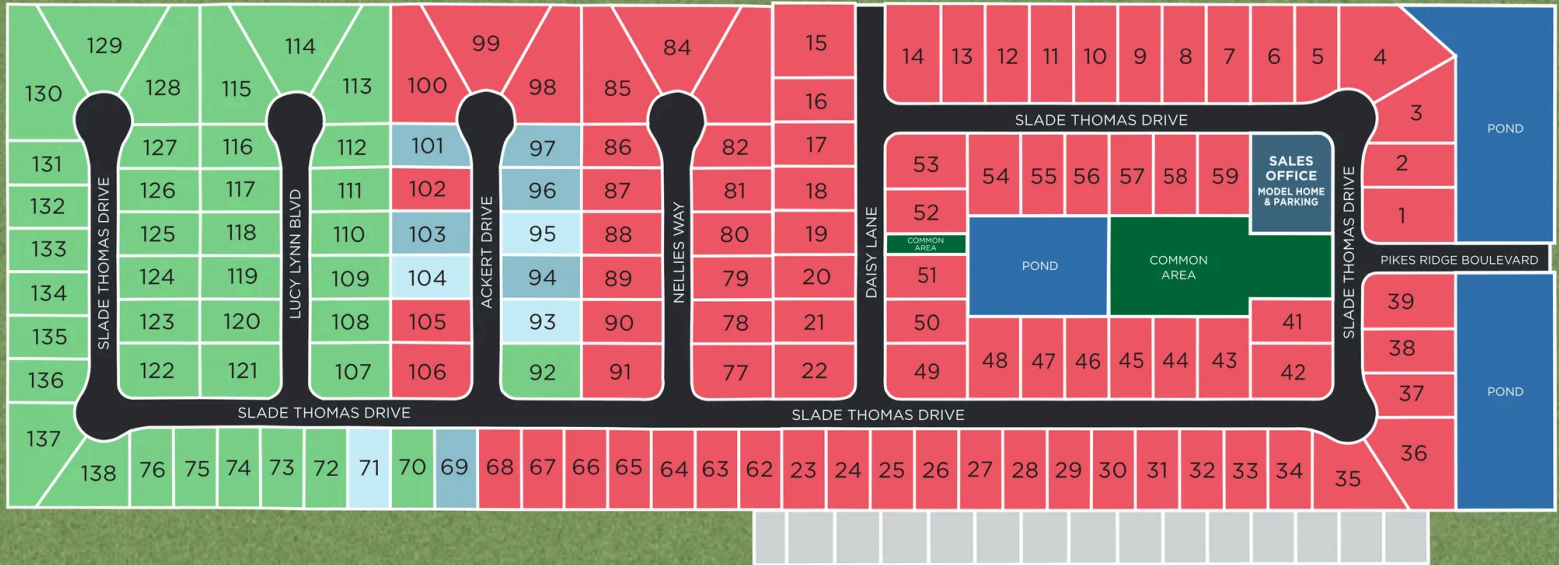




Pikes Ridge in Meridianville, AL

# Community Homesite Map

Jessica Craig  
Call (256) 269-7337



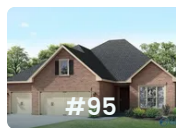
## PIKES RIDGE

Meridianville, Alabama



- QUICK MOVE-IN
- COMING SOON
- AVAILABLE
- SOLD

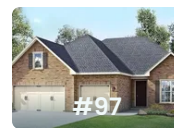
## Featured Homes for Sale



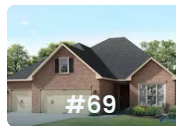
**The Lanier**  
107 Ackert Drive  
**\$384,762**



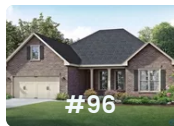
**The Harrison B**  
103 Ackert Drive  
**\$406,647**



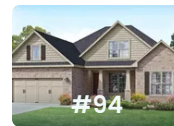
**The Kirkland**  
111 Ackert Drive  
**\$342,277**



**The Lanier**  
181 Slade Thomas Drive  
**\$385,006**



**The Rockford**  
109 Ackert Drive  
**\$363,077**



**The Rockford B**  
105 Ackert Drive  
**\$428,307**



# The Montgomery

## Exterior Options

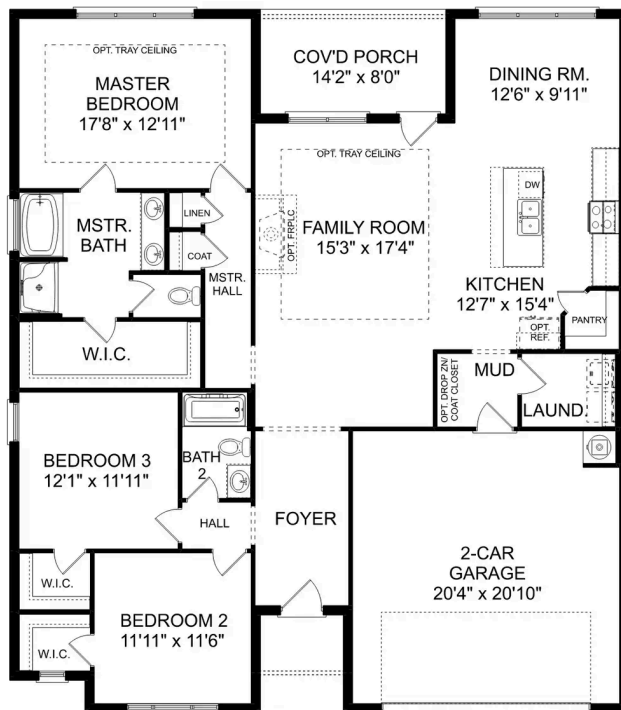


**BEDS**  
**3**

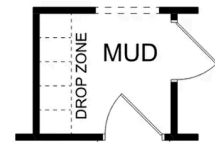
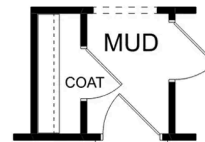
**BATHS**  
**2**

**SQ FT**  
**1,912**

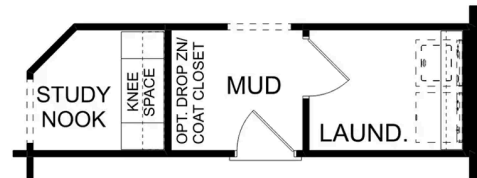
**PARKING**  
**2**



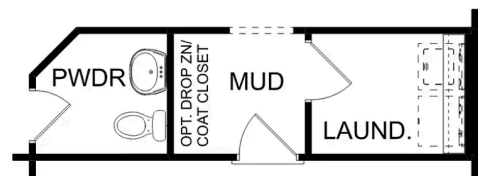
**THE MONTGOMERY**



OPT. COAT CLOSET OR DROP ZONE



OPT. STUDY NOOK



OPT. POWDER BATH

**THE MONTGOMERY OPTIONS**



# The Montgomery with Bo...

## Exterior Options

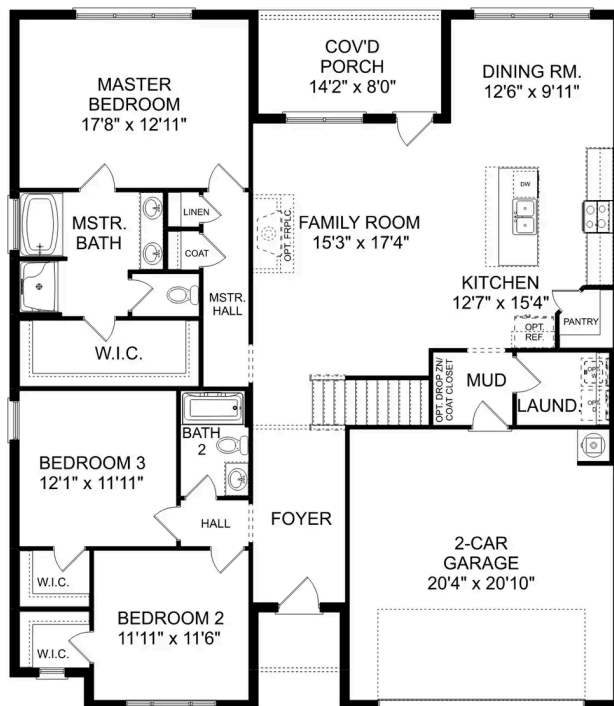
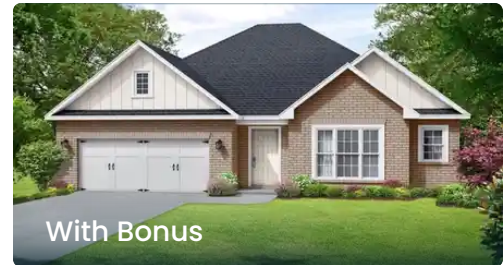


**BEDS**  
**3**

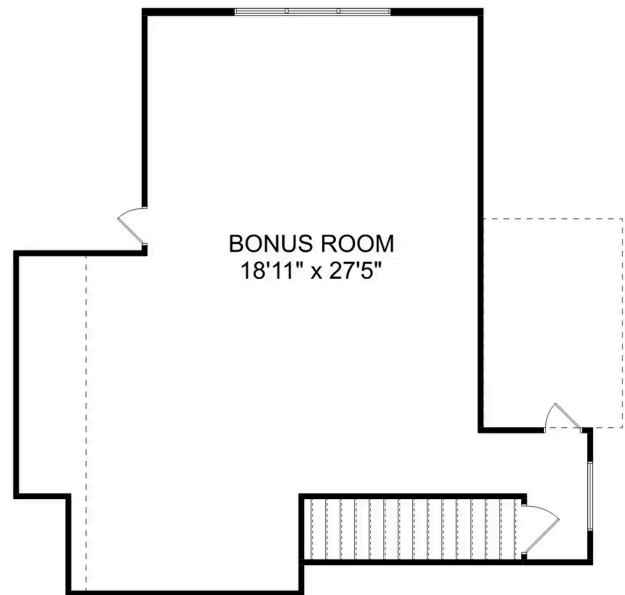
**BATHS**  
**2**

**SQ FT**  
**2,684**

**PARKING**  
**2**



THE MONTGOMERY BONUS MAIN FLOOR



THE MONTGOMERY BONUS UPPER FLOOR

## The Montgomery with Bonus

With modern touches like an open-concept, homeowner-centric layout, The Montgomery is one-level living at its finest. The kitchen showcases a huge island, corner pantry and stainless-steel appliances. The plan's open family room is perfect for entertaining guests, and the covered porch is easily accessible. Discover the plan's impressive Master Suite, complete with bright, inviting windows and a huge walk-in closet.

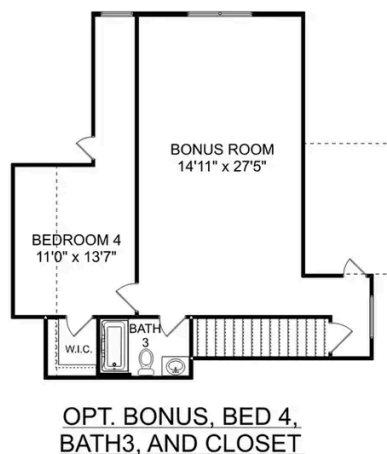
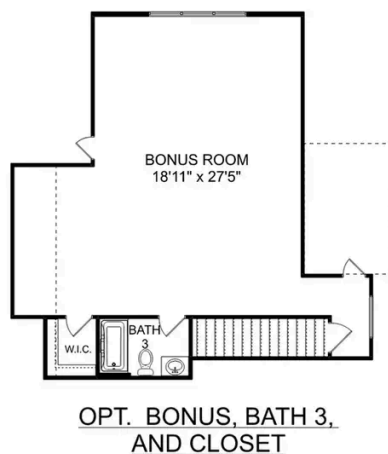
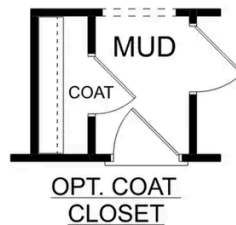
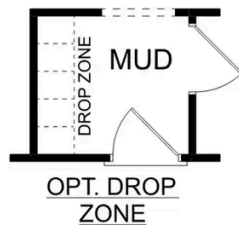
Make it your own with The Montgomery's flexible floor plan, featuring an optional bonus room, a covered porch and more! Just know that offerings vary by location, so please discuss our standard features and upgrade options with your community's agent.

BEDS  
**3**

BATHS  
**2**

SQ FT  
**2,684**

GARAGE  
**2**



### THE MONTGOMERY BONUS OPTIONS



# The Kirkland



## Description

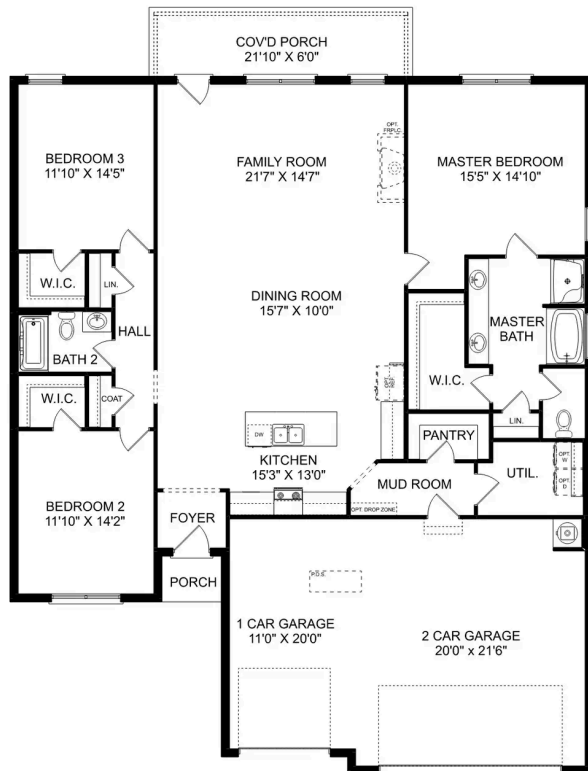
Behind the Kirkland's lovely, full-brick exterior lies a beautiful home. The foyer immediately opens up into a stunning, open-concept living space, combining the dining room, family room and kitchen.

**BEDS**  
**3**

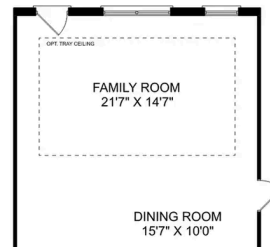
**BATHS**  
**2**

**SQ FT**  
**2,076**

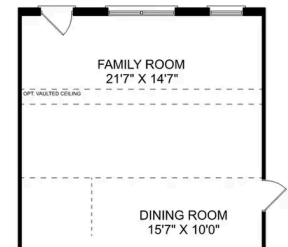
**PARKING**  
**3**



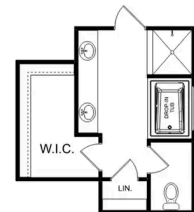
**THE KIRKLAND**



**OPTIONAL TRAY  
CEILING**



**OPTIONAL VAULTED  
CEILING**



**OPTIONAL LUXURY  
MASTER BATH**

**THE KIRKLAND OPTIONS**

# The Kirkland with Bonus



## Description

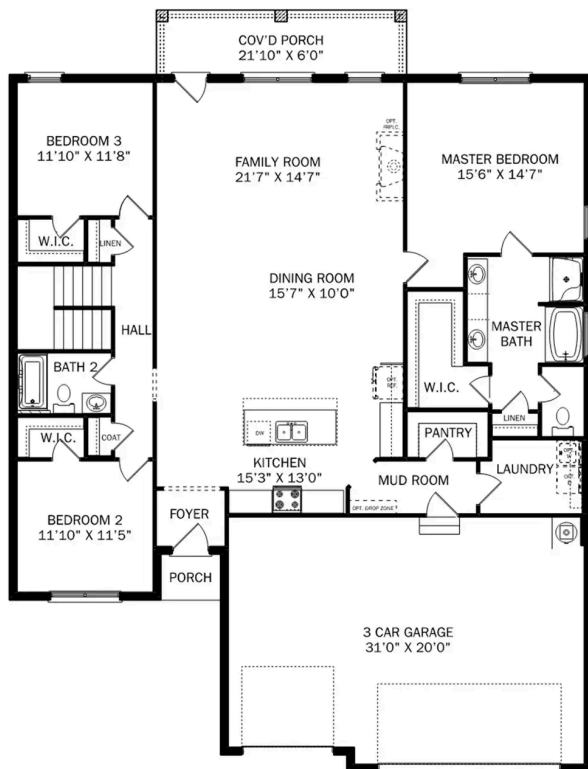
Behind the Kirkland's lovely, full-brick exterior lies a beautiful home. The foyer immediately opens up into a stunning, open-concept living space, combining the dining room, family room and kitchen.

**BEDS**  
**3**

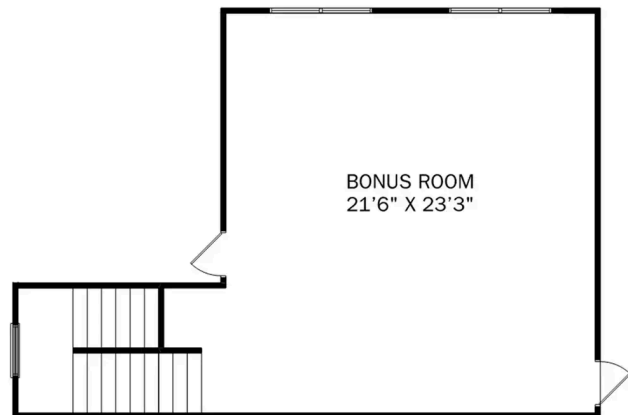
**BATHS**  
**2**

**SQ FT**  
**2,767**

**PARKING**  
**3**



**THE KIRKLAND BONUS MAIN FLOOR**



**THE KIRKLAND BONUS UPPER FLOOR**



## The Kirkland with Bonus

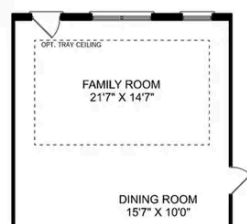
Behind the Kirkland's lovely, full-brick exterior lies a beautiful home. The foyer immediately opens up into a stunning, open-concept living space, combining the dining room, family room and kitchen. From the stunning island to its endless counterspace, the kitchen is perfect for entertaining, and the covered porch is always ready to take the party outside. The Master Suite features a lovely, bright bedroom and Master Bath, complete with shower, bathtub and walk-in closet.

BEDS  
**3**

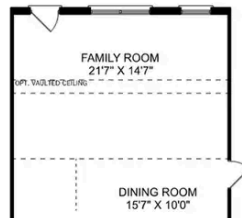
BATHS  
**2**

SQ FT  
**2,767**

GARAGE  
**3**



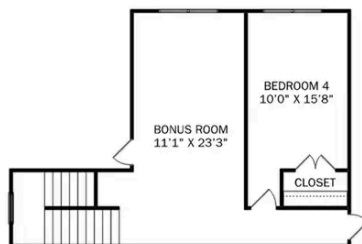
OPTIONAL TRAY  
CEILING



OPTIONAL VAULTED  
CEILING



OPTIONAL LUXURY  
MASTER BATH



OPTIONAL BEDROOM 5



OPTIONAL BATH 3

### THE KIRKLAND BONUS OPTIONS

# The Rockford

## Exterior Options

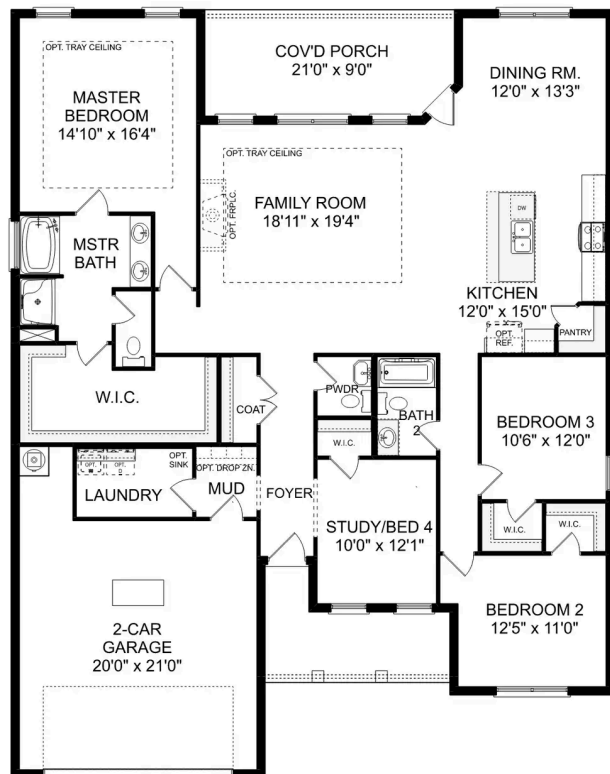


**BEDS**  
**3**

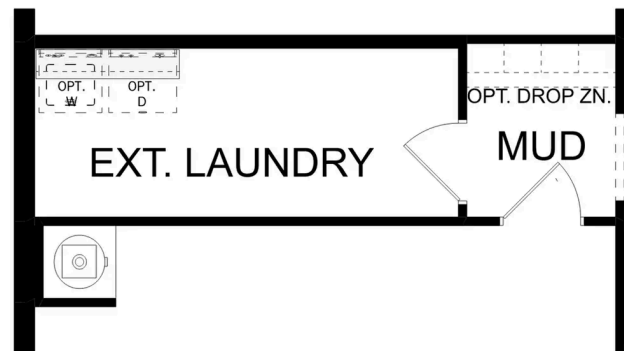
**BATHS**  
**2.5**

**SQ FT**  
**2,286**

**PARKING**  
**2**



**THE ROCKFORD**



**THE ROCKFORD OPTIONS**



# The Rockford with Bonus

## Exterior Options



**BEDS**  
**3**

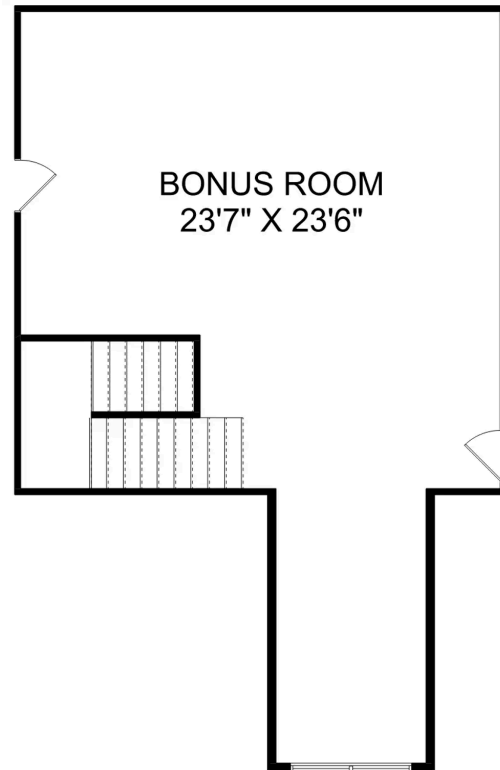
**BATHS**  
**2.5**

**SQ FT**  
**2,904**

**PARKING**  
**2**



THE ROCKFORD BONUS MAIN FLOOR



THE ROCKFORD BONUS UPPER FLOOR

## The Rockford with Bonus

With its charming, full-brick exterior, it's no wonder why The Rockford's our best-selling floor plan! A wall of windows floods the family room with natural light, and the kitchen invites you to cook – welcoming you with an oversized island, stainless-steel appliances and a large corner pantry. The isolated Master Suite features plenty of room and a massive walk-in closet.

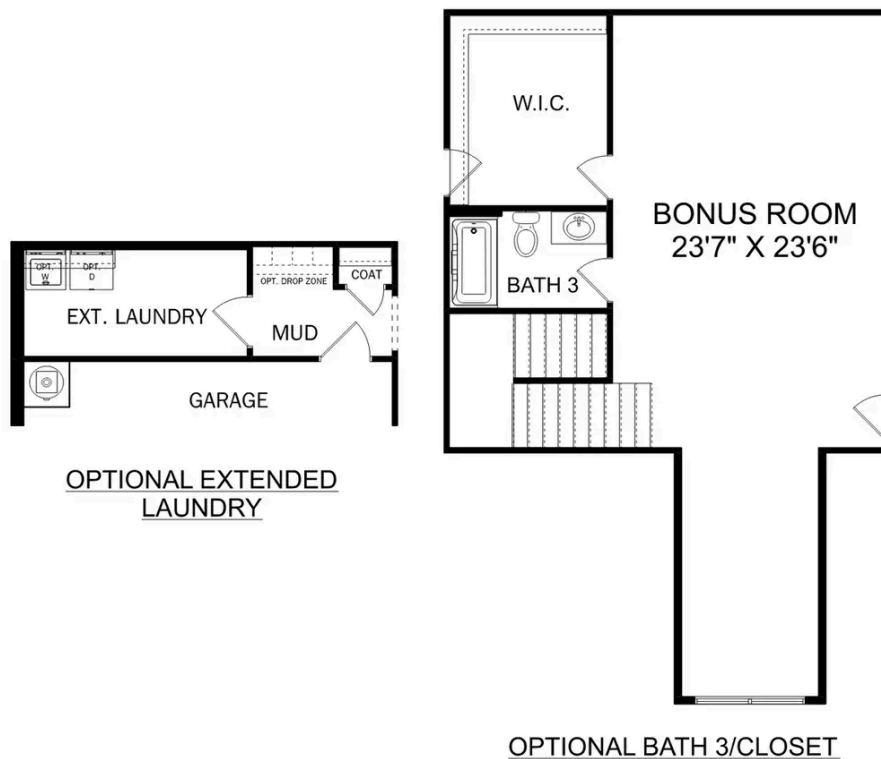
Make it your own with The Rockford's flexible floor plan, and consider replacing the home office with a fourth bedroom. It's your choice. Just know that offerings vary by location, so please discuss our standard features and upgrade options with your community's agent.

BEDS  
**3**

BATHS  
**2.5**

SQ FT  
**2,904**

GARAGE  
**2**



THE ROCKFORD OPTIONS



# The Lanier



## Description

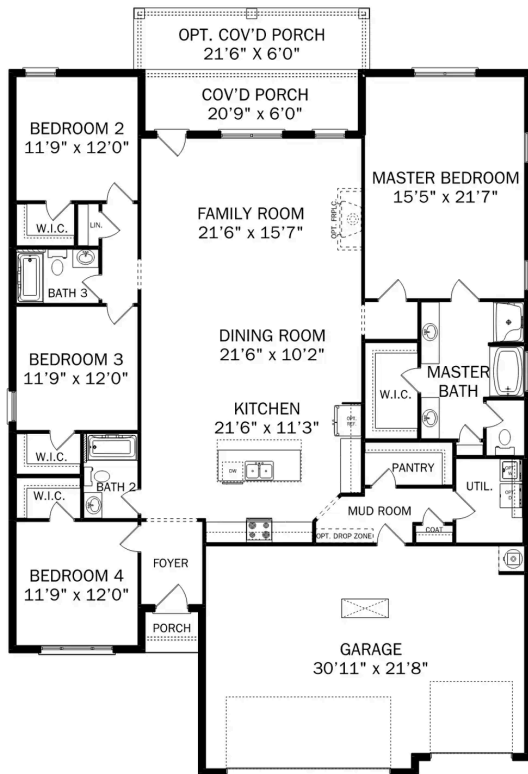
Within The Lanier's charming, full-brick exterior lies four bedrooms and plenty of space. The three-car garage leads into the home's mud room. The kitchen features a large pantry, double-sided island and more than enough counter space. Once there you'll discover the home's biggest feature – the huge, open-concept layout.

**BEDS**  
**4**

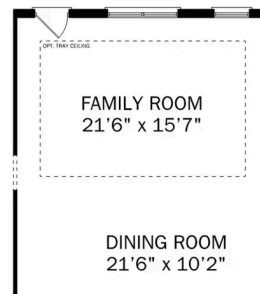
**BATHS**  
**3**

**SQ FT**  
**2,411**

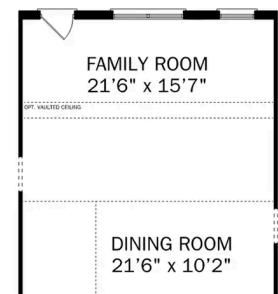
**PARKING**  
**3**



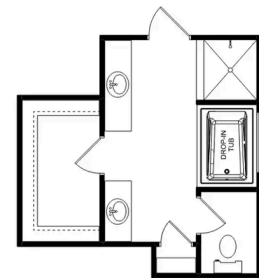
**THE LANIER**



**OPTIONAL TRAY  
CEILING**



**OPTIONAL VAULTED  
CEILING**



**OPTIONAL LUXURY  
MASTER BATH**

**THE LANIER OPTIONS**

# The Harrison

## Exterior Options

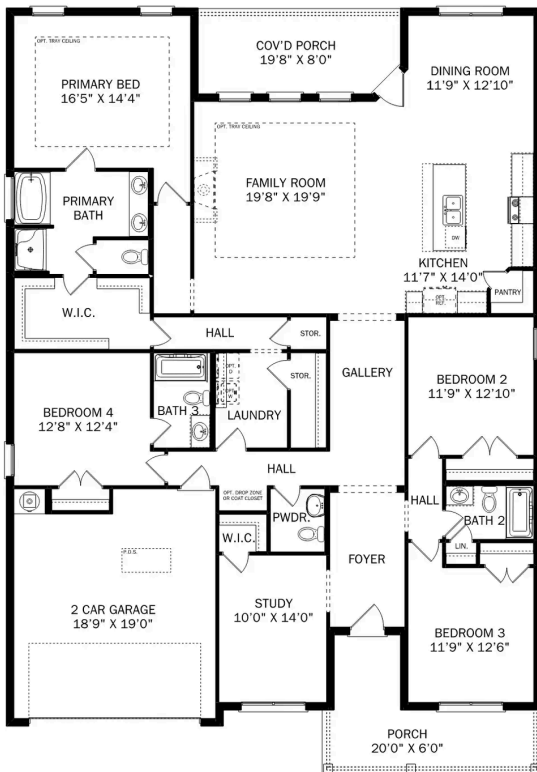


**BEDS**  
**4**

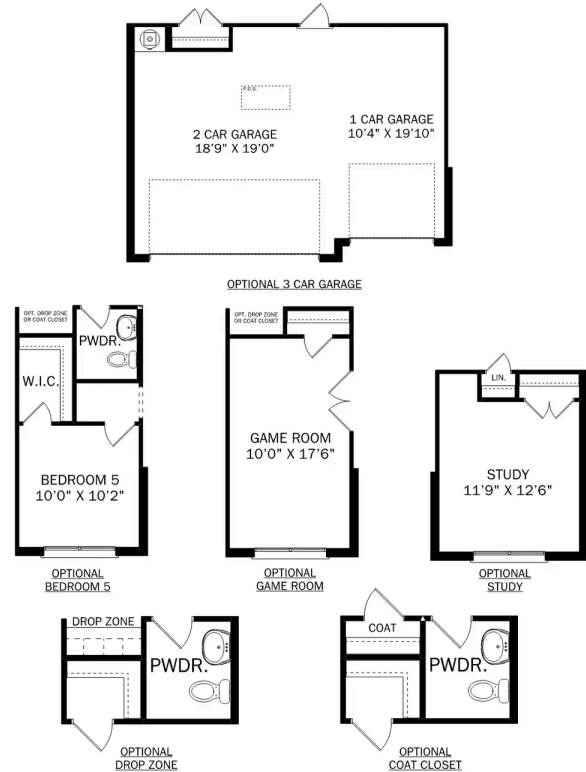
**BATHS**  
**3.5**

**SQ FT**  
**2,678**

**PARKING**  
**2**



**THE HARRISON**



**THE HARRISON OPTIONS**

# The Harrison with Bonus

## Description



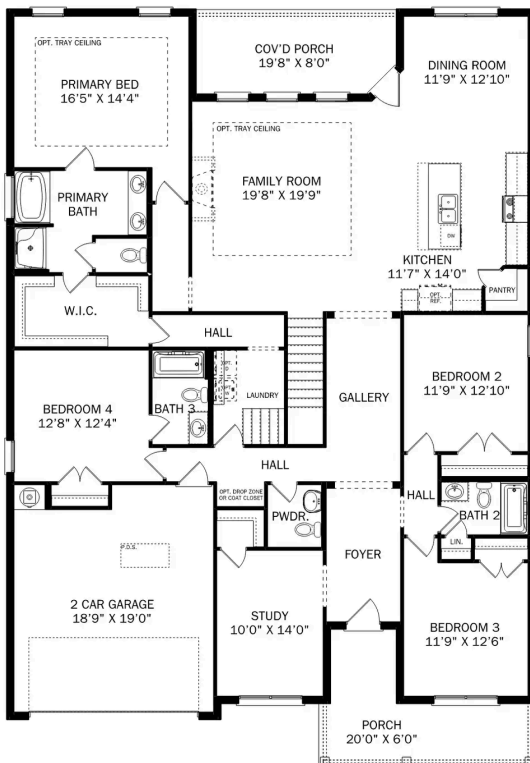
From its charming brick exterior to its open-concept kitchen/family room, The Harrison is perfect for entertaining. Its large kitchen island invites guests to pull up a chair, and its four spacious bedrooms ensure everyone has enough room.

**BEDS**  
**4**

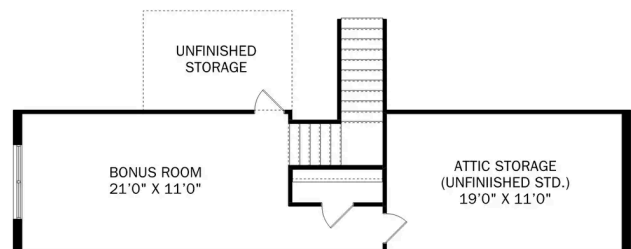
**BATHS**  
**3.5**

**SQ FT**  
**2,992**

**PARKING**  
**2**



THE HARRISON BONUS MAIN FLOOR



THE HARRISON BONUS UPPER FLOOR



## The Harrison with Bonus

From its charming brick exterior to its open-concept kitchen/family room, The Harrison is perfect for entertaining. Its large kitchen island invites guests to pull up a chair, and its four spacious bedrooms ensure everyone has enough room. The downstairs study offers a brief respite from the hustle and bustle, and the covered porch welcomes your family to grill and relax.

The Master Suite steals the show as its windows cast warm, natural light across the large room. The large walk-in closet is ready to handle your wardrobe, and the adjoining storage closet leads right into the laundry room – making laundry day significantly easier.

BEDS  
**4**

BATHS  
**3.5**

SQ FT  
**2,992**

GARAGE  
**2**



THE HARRISON BONUS OPTIONS

# The Madison A

## Exterior Options



**BEDS**  
**5**

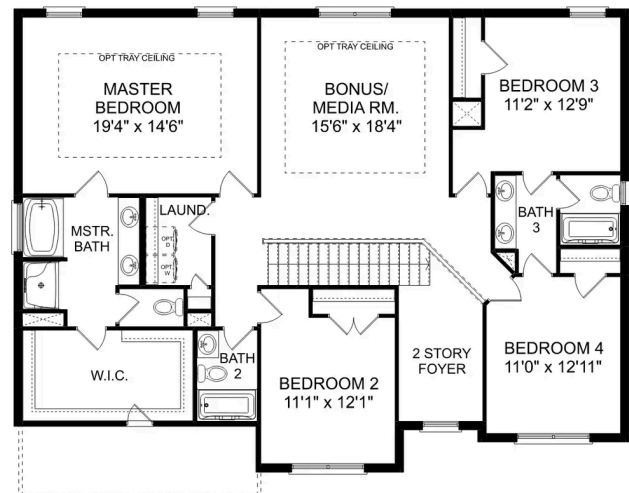
**BATHS**  
**4**

**SQ FT**  
**3,199**

**PARKING**  
**2**



THE MADISON MAIN FLOOR



THE MADISON UPPER FLOOR

## The Madison A

Behind the Madison's gorgeous brick exterior lies a massive layout, featuring five bedrooms, an elegant dining room and a welcoming study. From the designer kitchen's stainless-steel appliances to its oversized island, you'll want to make all your meals at home. The upstairs bonus room is perfect for family movie nights, and the Master Suite features a huge walk-in closet!

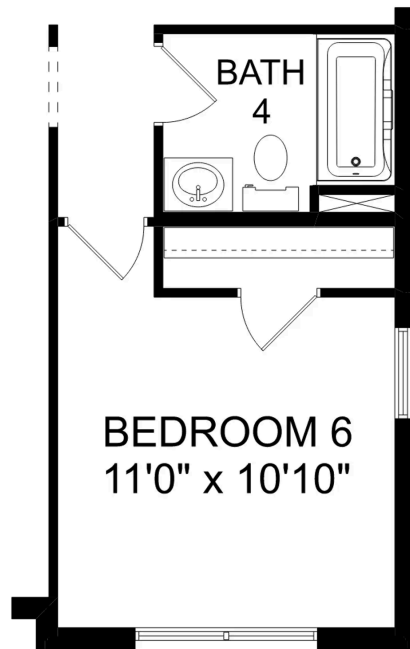
Make it your own with The Madison's flexible floor plan. Just know that offerings vary by location, so please discuss our standard features and upgrade options with your community's agent.

BEDS  
**5**

BATHS  
**4**

SQ FT  
**3,199**

GARAGE  
**2**



### OPT. BEDROOM 6

#### THE MADISON OPTIONS





Pikes Ridge in Meridianville, AL

Call (256) 269-7337  
DAVIDSONHOMES.COM

## The Emory



### Description

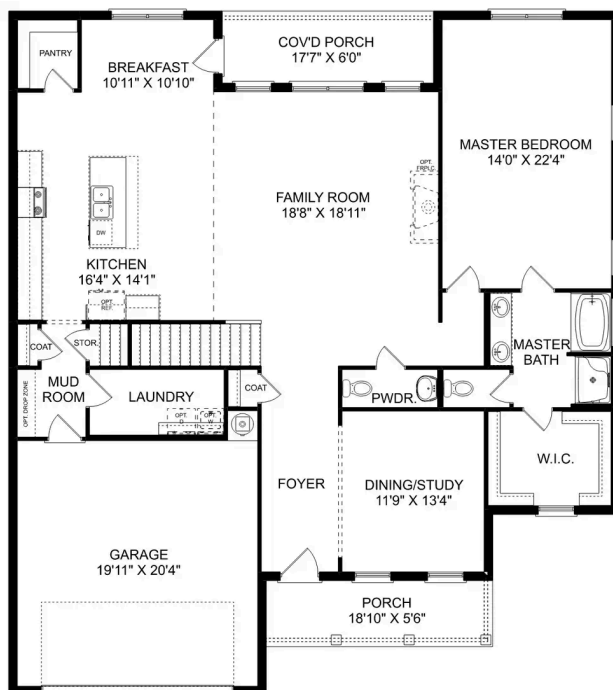
Enter The Emory, and you'll immediately discover why it's one of our most-loved plans. From its elegant dining room to its covered porch, this home has everything you need – and more! The designer kitchen features an oversized island, and the open-concept layout makes The Emory feel even larger.

**BEDS**  
**4**

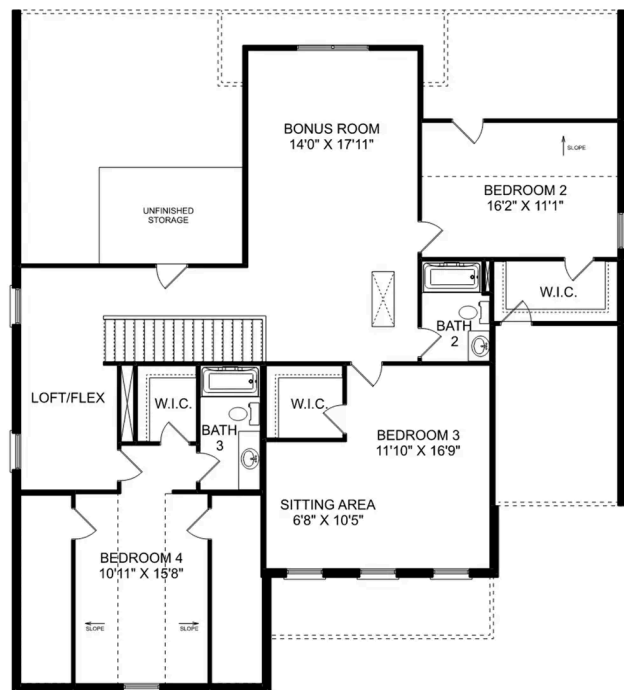
**BATHS**  
**3.5**

**SQ FT**  
**3,563**

**PARKING**  
**2**



THE EMORY MAIN FLOOR



THE EMORY UPPER FLOOR

Copyright 2024 Davidson Homes, Inc. | All Rights Reserved | Davidson Homes is a leading builder of quality new homes across the Southeast. Davidson Homes reserves the right to adjust items listed without prior notice or obligation. Such items may include, but are not limited to, options, included features and community information, pricing, amenities, square footage, terms or availability. Features, options, floor plans, elevations, colors, dimensions and photographs are for illustration purposes and may vary from homes built. Please see your community specialist for details. Equal housing lender. Last updated 03/07/2023.

