

Salem Landing

Davidson Homes in Murfreesboro, TN

New Phase Now Selling! Welcome to Salem Landing! Here, we're offering a selection of our most popular floor plans, so you can find the perfect home to fit your needs.

Living in Salem Landing means enjoying a quiet, suburban setting while still being just 30 minutes from Nashville. The community features a playground, perfect for families with young children, as well as community sidewalks for easy walking and biking. Plus, Salem Landing is conveniently located near Publix, is just 5 miles from Barfield Crescent Park, and is less than 10 miles from MTSU.

Features

Playground
Community Sidewalks
Close to Publix

Local Schools

Rockvale Elementary
Rockvale Middle
Rockvale High



Community Address

5718 Thunder Drive

Floor Plans

06

Homes from the

\$420s

Copyright 2024 Davidson Homes, Inc. | All Rights Reserved | Davidson Homes is a leading builder of quality new homes across the Southeast. Davidson Homes reserves the right to adjust items listed without prior notice or obligation. Such items may include, but are not limited to, options, included features and community information, pricing, amenities, square footage, terms or availability. Features, options, floor plans, elevations, colors, dimensions and photographs are for illustration purposes and may vary from homes built. Please see your community specialist for details. Equal housing lender. Last Updated 05/20/2024.





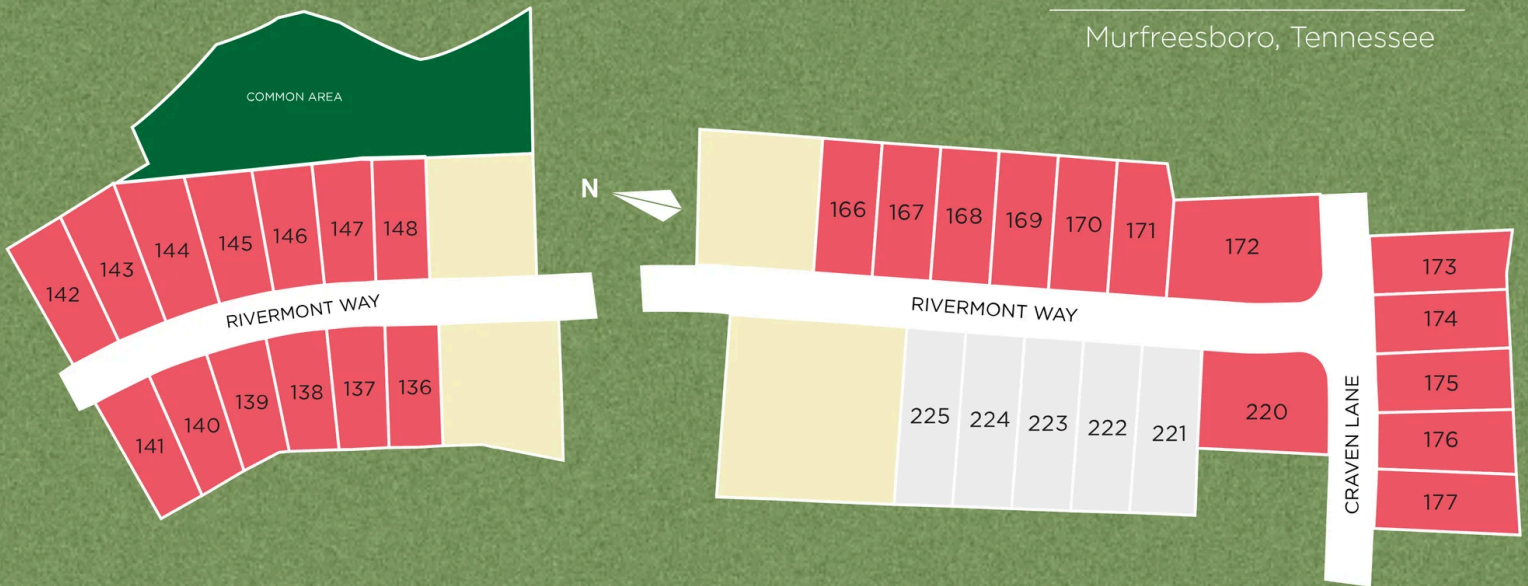
Salem Landing in Murfreesboro, TN

Community Homesite Map

Jeremy Malone
Call (615) 802-9741

SALEM LANDING

Murfreesboro, Tennessee



The Gordon A

Exterior Options

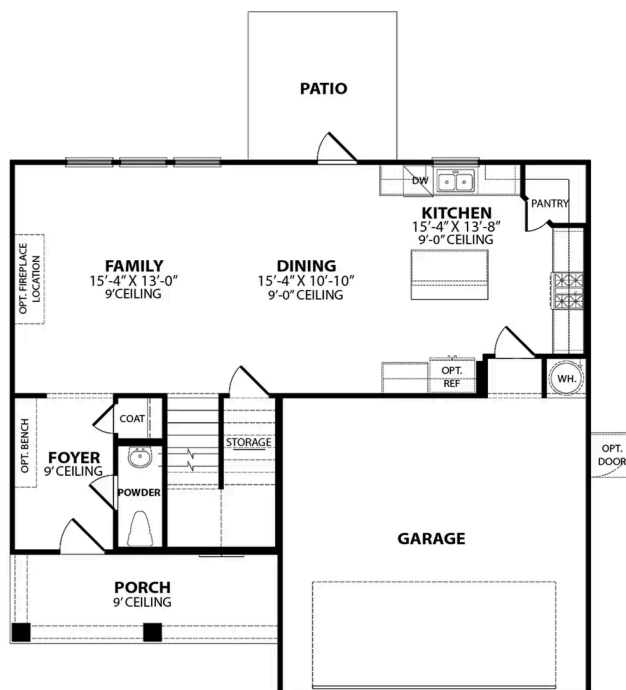


BEDS
3

BATHS
2.5

SQ FT
1,972

PARKING
2



THE GORDON A MAIN FLOOR



THE GORDON A SECOND FLOOR

The Gordon A

Introducing The Gordon, a beautifully designed, open-concept floor plan that combines comfort and charm. The Gordon's unique design ensures an efficient use of space, making it perfect for modern living.

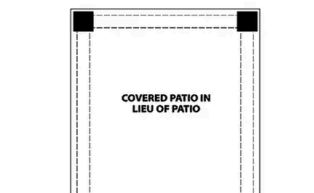
As you enter the home, you are greeted by a spacious foyer that leads into the heart of The Gordon. Here, you'll find the expansive living area, which seamlessly connects to the gourmet kitchen and dining area. The outdoor patio is a stunning extension of the living space, offering a private retreat for relaxation or entertaining.

BEDS
3

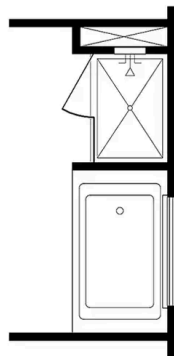
BATHS
2.5

SQ FT
1,972

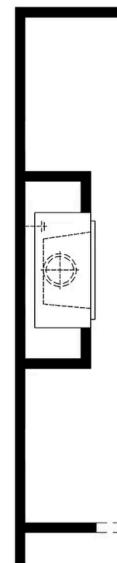
GARAGE
2



OPT. COVERED PATIO IN LIEU OF PATIO



OPT. DELUXE OWNERS BATH



OPT. FIREPLACE

THE GORDON A OPTIONS

The Logan A



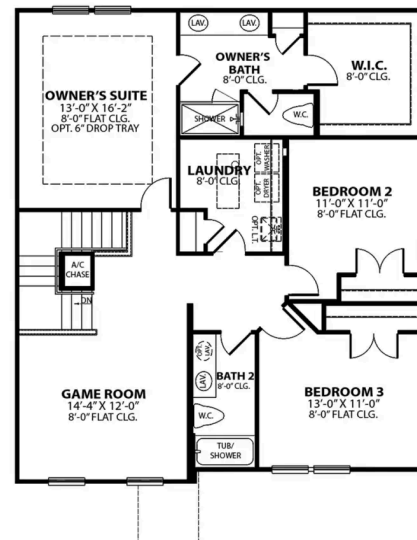
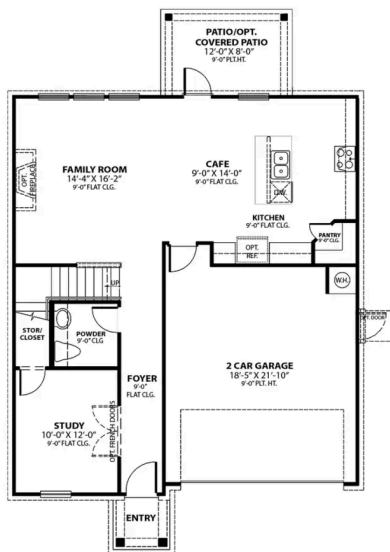
BEDS
3

BATHS
2.5

SQ FT
2,155

PARKING
2

Exterior Options



The Logan A

The Logan is a spacious and modern home with an open-concept design that seamlessly connects the living room, cafe, and kitchen. As you enter the home, you are greeted by a welcoming foyer that leads you into the heart of the house. The kitchen features ample counter space, a large island with seating, and a pantry for added storage. Down the hall is a cozy study, perfect for those who work from home or need a quiet space to read or study. The study is tucked away from the main living area, providing privacy and seclusion when needed.

BEDS
3

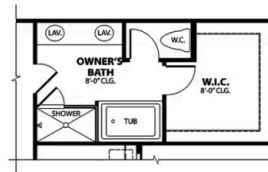
BATHS
2.5

SQ FT
2,155

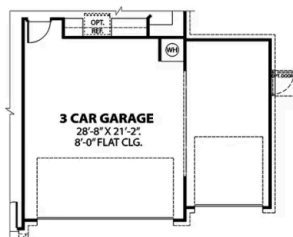
GARAGE
2



**OPT. BEDROOM 4
I.L.O. GAMEROOM**



OPT. DELUXE OWNER'S BATH



OPT. 3 CAR GARAGE

OPTIONS



Salem Landing in Murfreesboro, TN

Call (615) 802-9741
DAVIDSONHOMES.COM

The Ash A



BEDS

3

BATHS

SQ FT
2,417

PARKING



MAIN FLOOR PLAN



UPPER FLOOR PLAN

Copyright 2024 Davidson Homes, Inc. | All Rights Reserved | Davidson Homes is a leading builder of quality new homes across the Southeast. Davidson Homes reserves the right to adjust items listed without prior notice or obligation. Such items may include, but are not limited to, options, included features and community information, pricing, amenities, square footage, terms or availability. Features, options, floor plans, elevations, colors, dimensions and photographs are for illustration purposes and may vary from homes built. Please see your community specialist for details. Equal housing lender. Last updated 01/25/2023.



The Willow C

Exterior Options



BEDS
3

BATHS
2.5

SQ FT
2,416

PARKING
2



MAIN FLOOR PLAN



UPPER FLOOR PLAN

The Willow C

The Willow's impressive front porch welcomes you into a modern, open space, complete with a formal Dining Room and Study. The Kitchen overlooks an open-concept Family Room. The second floor features a spacious Owner's Suite with a large walk-in closet and Owner's Bath along with two additional Bedrooms with ample walk-ins closets of their own.

Make it your own with The Willow's flexible floor plan, showcasing an optional gourmet kitchen, a fireplace and more! Offerings vary by location, so please discuss your options with your community's agent.

BEDS
3

BATHS
2.5

SQ FT
2,416

GARAGE
2



PLAN OPTIONS



Salem Landing in Murfreesboro, TN

Call (615) 802-9741
DAVIDSONHOMES.COM

The Henry A



BEDS

BATHS

3.5

SQ FT
2,655

PARKING

Exterior Options



MAIN FLOOR PLAN



SECOND FLOOR PLAN



The Henry A

Welcome to The Henry! Upon entering the spacious foyer, you'll immediately notice the dedicated study, perfect for a home office or quiet reading nook. You'll be captivated by the open-concept living area, seamlessly connecting the family room, and kitchen. This layout offers ample space for entertaining, while multiple windows provide an abundance of natural light.

The Henry's thoughtful design includes four generously sized bedrooms, with the luxurious master suite boasting a walk-in closet and en-suite bathroom. Two additional full bathrooms provide convenience for family members and guests, while the half bath situated on the main floor is perfect for visitors.

BEDS
4

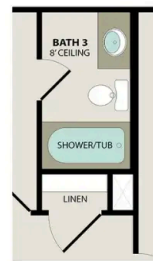
BATHS
3.5

SQ FT
2,655

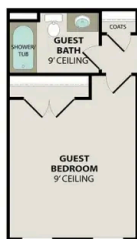
GARAGE
2



OPT. DELUXE BATH



**OPT. BATH 3
I.L.O. OWNERS W.I.C.**



**OPT. GUEST BEDROOM
I.L.O. STUDY**



OPT. FIREPLACE

OPTIONS

The Ridgeport

Exterior Options

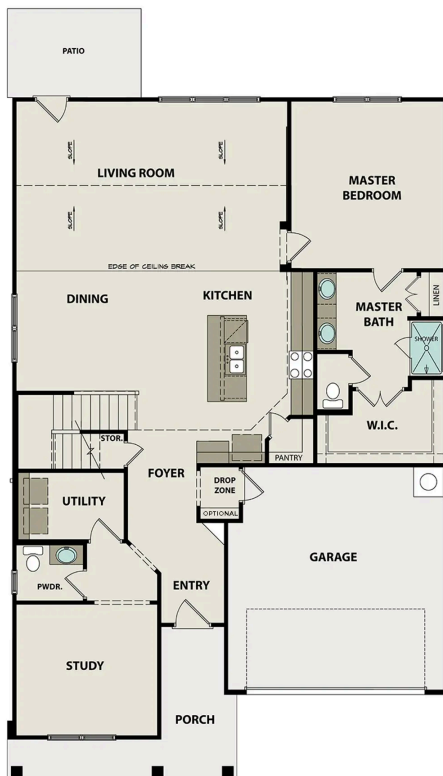


BEDS
4

BATHS
2.5

SQ FT
2,882

PARKING
2



The Ridgeport

Inside The Ridgeport's handsome exterior lies a stunning layout. The open-concept kitchen/family room welcomes visitors with plenty of entertaining space. After the party, retire to a gorgeous owners' suite, complete with a lovely master bath and walk-in closet. The downstairs study is perfect for working from home. And upstairs features three more bedrooms and a spacious game room.

Make it your own with The Ridgeport's flexible floor plan, featuring additional options like a fifth bedroom, three-car garage and a media room. Just know that offerings vary by location, so please discuss our standard features and upgrade options with your community's agent.

BEDS
4

BATHS
2.5

SQ FT
2,882

GARAGE
2

