

# Kendall Downs

Davidson Homes in Toney, AL

Developed by Davidson Homes, Kendall Downs is a lovely community in Toney, minutes away from Highway 53 with easy access to Downtown Huntsville. Residents relish the spacious pool, charming streetscapes, and distinctive full brick homes with gas options.

Thanks to Kendall Downs' unmatched Toney location, you won't have to go far to enjoy a variety of attractions, like Harvest Square Nature Preserve, U.S. Space & Rocket Center, Huntsville Museum of Art, and the EarlyWorks Children's Museum.

## Features

Future Pool & Cabana  
100% Financing Available  
Great Public Schools

## Local Schools

Madison County School Di...  
Madison Cross Roads Ele...  
Sparkman Middle  
Sparkman High

## Utilities

Electric: Huntsville Utilities  
Gas: North Alabama Gas  
Water: Madison County W...  
Internet: AT&T



Community Address

303 Kendall Downs Blvd

New Homes

05

Floor Plans

11

Homes from the

\$320s

Copyright 2024 Davidson Homes, Inc. | All Rights Reserved | Davidson Homes is a leading builder of quality new homes across the Southeast. Davidson Homes reserves the right to adjust items listed without prior notice or obligation. Such items may include, but are not limited to, options, included features and community information, pricing, amenities, square footage, terms or availability. Features, options, floor plans, elevations, colors, dimensions and photographs are for illustration purposes and may vary from homes built. Please see your community specialist for details. Equal housing lender. Last Updated 05/20/2024.





Kendall Downs in Toney, AL

## Quick Move-In Homes

Michele Tola Carpenter  
Call (256) 561-9148



LIMITED TIME

Save **25%** on  
Design Upgrades!

PLUS, ENJOY  
**\$5,000\***  
TO USE AS YOU CHOOSE!

LEARN MORE →

\*See link for terms/conditions.

UPDATED  
**05/20/2024**

HOMES  
**05**

COMMUNITY ADDRESS  
**303 Kendall Downs Blvd**

Coming Soon



**\$363,203**

**3 Beds 2 Baths 2,076 Sq Ft**

217 White Horse Way | #62

The Kirkland Plan

Coming Soon



**\$424,900**

**5 Beds 3.5 Baths 3,079 Sq Ft**

225 White Horse Way | #91

The Madison A Plan

Aug '24



~~\$342,942~~ **\$324,900**

**3 Beds 2 Baths 1,912 Sq Ft**

227 White Horse Way | #92

The Montgomery Plan

Sep '24



**\$364,900**

**3 Beds 2.5 Baths 2,286 Sq Ft**

231 White Horse Way | #94

The Rockford Plan

Sep '24



~~\$470,072~~ **\$449,900**

**4 Beds 4 Baths 3,021 Sq Ft**

233 White Horse Way | #95

The Harrison Plan







Kendall Downs in Toney, AL

# Community Homesite Map

Michele Tola Carpenter

Call (256) 561-9148



## KENDALL DOWNS

Toney, Alabama



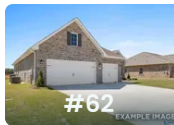
QUICK MOVE-IN

COMING SOON

AVAILABLE

SOLD

## Featured Homes for Sale



### The Kirkland

217 White Horse Way

**\$363,203**

#62

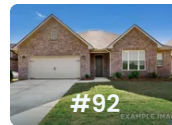


### The Madison A

225 White Horse Way

**\$424,900**

#91

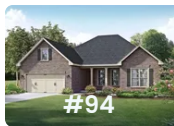


### The Montgomery

227 White Horse Way

**\$324,900**

#92

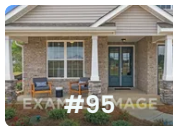


### The Rockford

231 White Horse Way

**\$364,900**

#94



### The Harrison

233 White Horse Way

**\$449,900**

#95



# The Montgomery

## Exterior Options

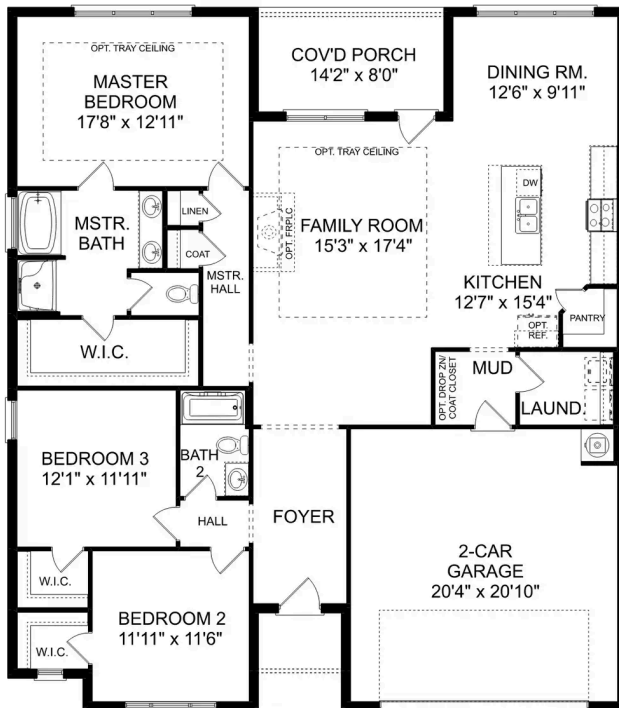


**BEDS**  
**3**

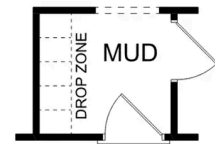
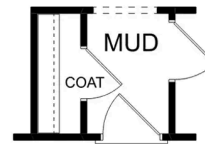
**BATHS**  
**2**

**SQ FT**  
**1,912**

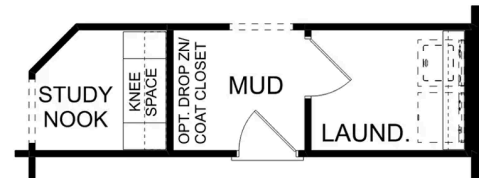
**PARKING**  
**2**



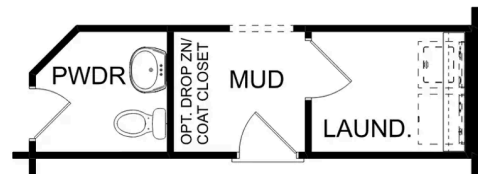
**THE MONTGOMERY**



OPT. COAT CLOSET OR DROP ZONE



OPT. STUDY NOOK



OPT. POWDER BATH

**THE MONTGOMERY OPTIONS**



# The Montgomery with Bo...

## Exterior Options

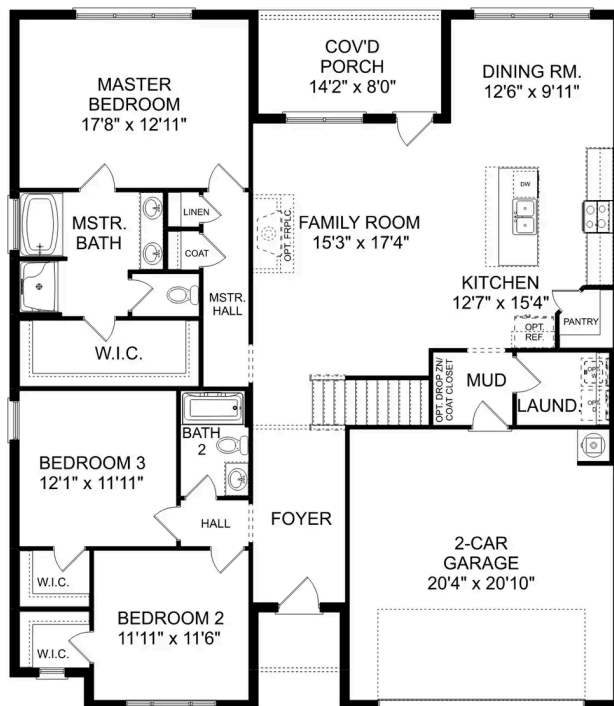
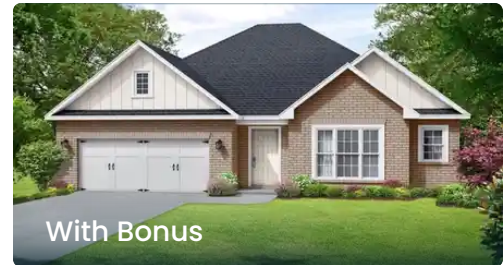


**BEDS**  
**3**

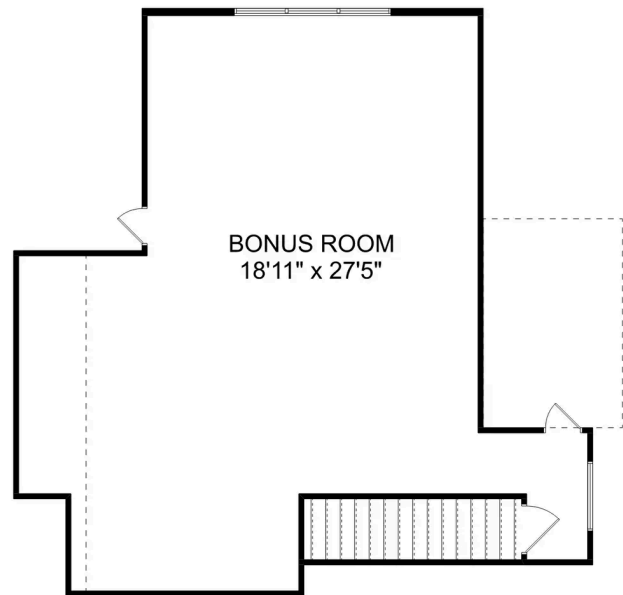
**BATHS**  
**2**

**SQ FT**  
**2,684**

**PARKING**  
**2**



THE MONTGOMERY BONUS MAIN FLOOR



THE MONTGOMERY BONUS UPPER FLOOR

## The Montgomery with Bonus

With modern touches like an open-concept, homeowner-centric layout, The Montgomery is one-level living at its finest. The kitchen showcases a huge island, corner pantry and stainless-steel appliances. The plan's open family room is perfect for entertaining guests, and the covered porch is easily accessible. Discover the plan's impressive Master Suite, complete with bright, inviting windows and a huge walk-in closet.

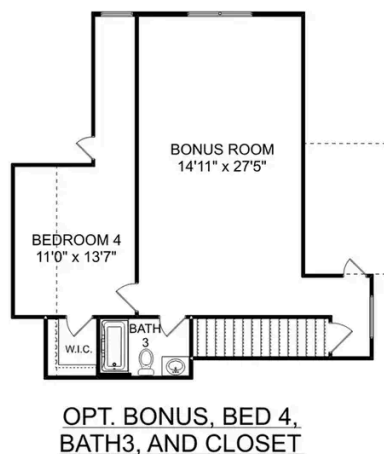
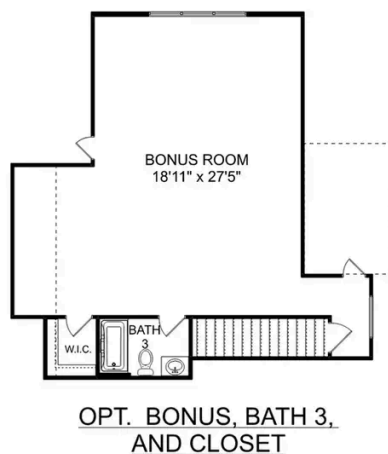
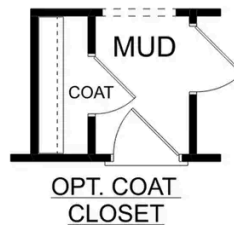
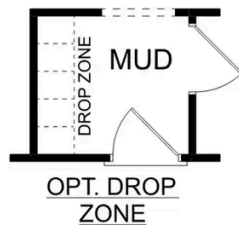
Make it your own with The Montgomery's flexible floor plan, featuring an optional bonus room, a covered porch and more! Just know that offerings vary by location, so please discuss our standard features and upgrade options with your community's agent.

BEDS  
**3**

BATHS  
**2**

SQ FT  
**2,684**

GARAGE  
**2**



### THE MONTGOMERY BONUS OPTIONS



# The Kirkland



## Description

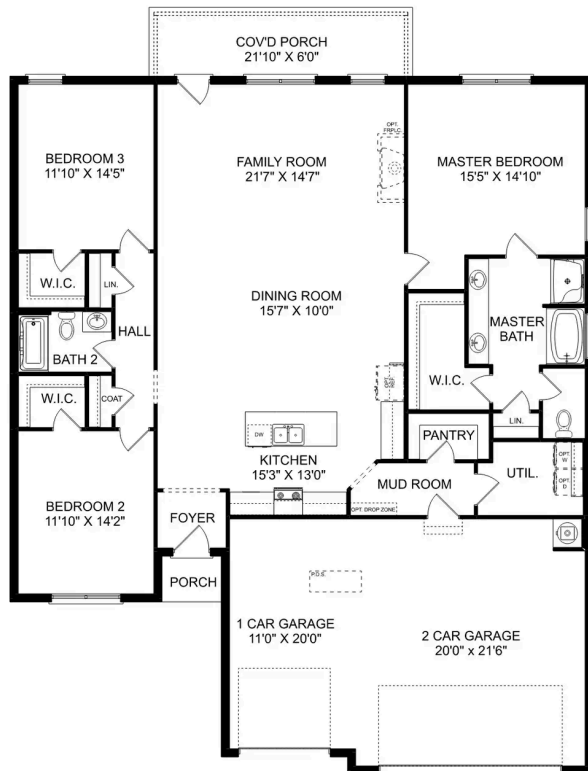
Behind the Kirkland's lovely, full-brick exterior lies a beautiful home. The foyer immediately opens up into a stunning, open-concept living space, combining the dining room, family room and kitchen.

**BEDS**  
**3**

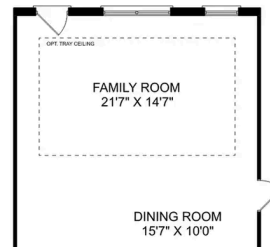
**BATHS**  
**2**

**SQ FT**  
**2,076**

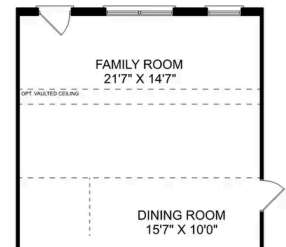
**PARKING**  
**3**



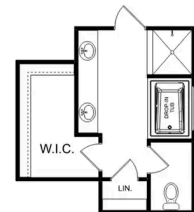
**THE KIRKLAND**



**OPTIONAL TRAY  
CEILING**



**OPTIONAL VAULTED  
CEILING**



**OPTIONAL LUXURY  
MASTER BATH**

**THE KIRKLAND OPTIONS**

# The Kirkland with Bonus



## Description

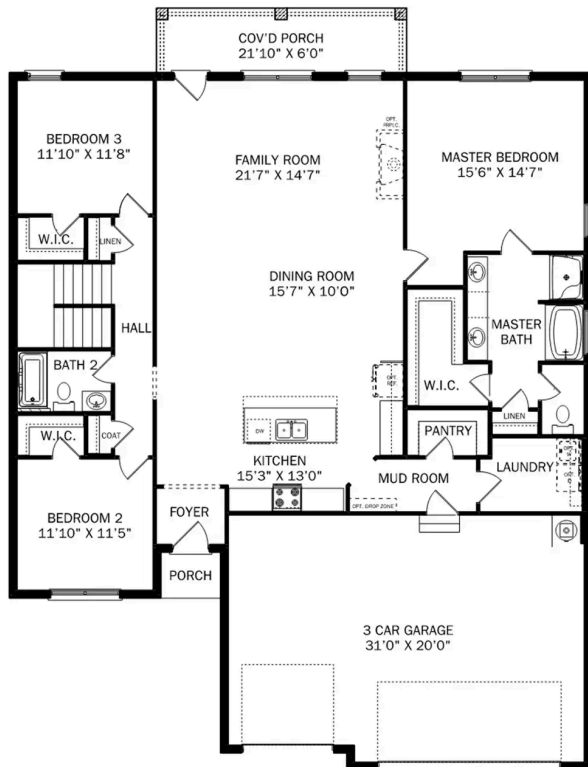
Behind the Kirkland's lovely, full-brick exterior lies a beautiful home. The foyer immediately opens up into a stunning, open-concept living space, combining the dining room, family room and kitchen.

**BEDS**  
**3**

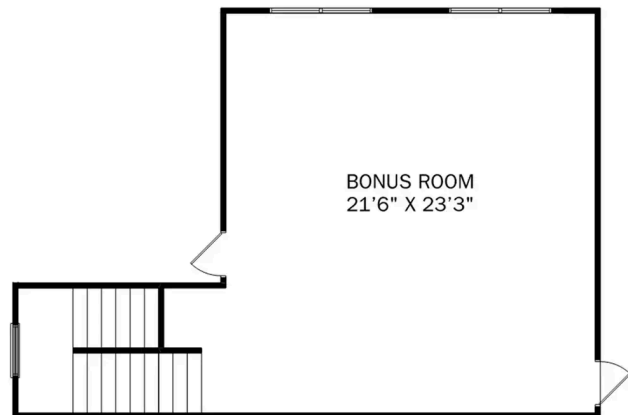
**BATHS**  
**2**

**SQ FT**  
**2,767**

**PARKING**  
**3**



**THE KIRKLAND BONUS MAIN FLOOR**



**THE KIRKLAND BONUS UPPER FLOOR**



## The Kirkland with Bonus

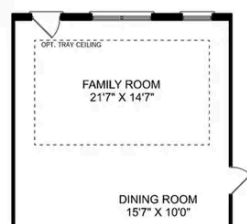
Behind the Kirkland's lovely, full-brick exterior lies a beautiful home. The foyer immediately opens up into a stunning, open-concept living space, combining the dining room, family room and kitchen. From the stunning island to its endless counterspace, the kitchen is perfect for entertaining, and the covered porch is always ready to take the party outside. The Master Suite features a lovely, bright bedroom and Master Bath, complete with shower, bathtub and walk-in closet.

BEDS  
**3**

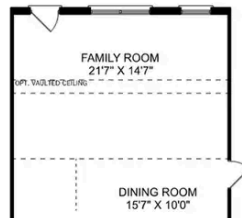
BATHS  
**2**

SQ FT  
**2,767**

GARAGE  
**3**



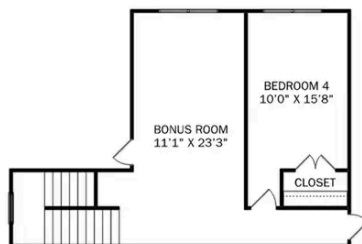
OPTIONAL TRAY  
CEILING



OPTIONAL VAULTED  
CEILING



OPTIONAL LUXURY  
MASTER BATH



OPTIONAL BEDROOM 5



OPTIONAL BATH 3

### THE KIRKLAND BONUS OPTIONS

# The Rockford

## Exterior Options

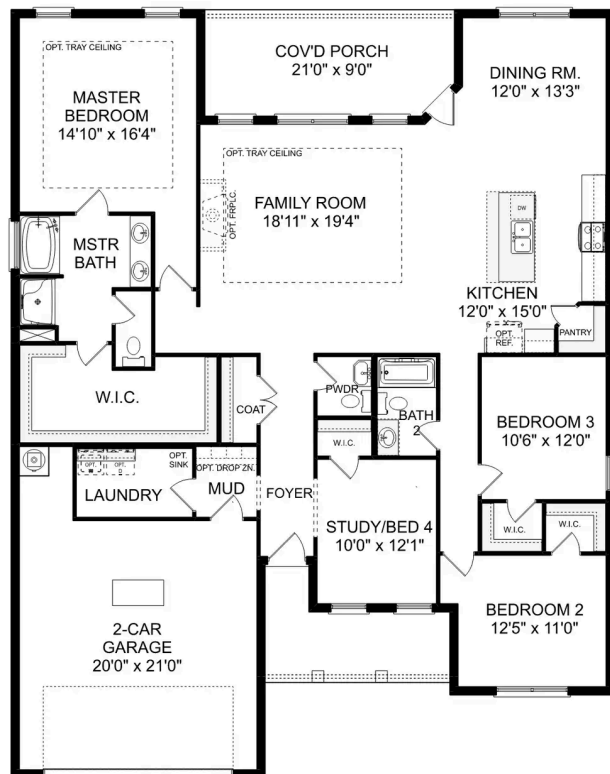


**BEDS**  
**3**

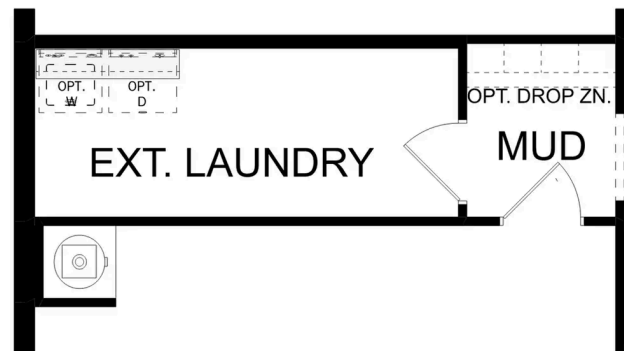
**BATHS**  
**2.5**

**SQ FT**  
**2,286**

**PARKING**  
**2**



**THE ROCKFORD**



**THE ROCKFORD OPTIONS**



# The Rockford with Bonus

## Exterior Options



**BEDS**  
**3**

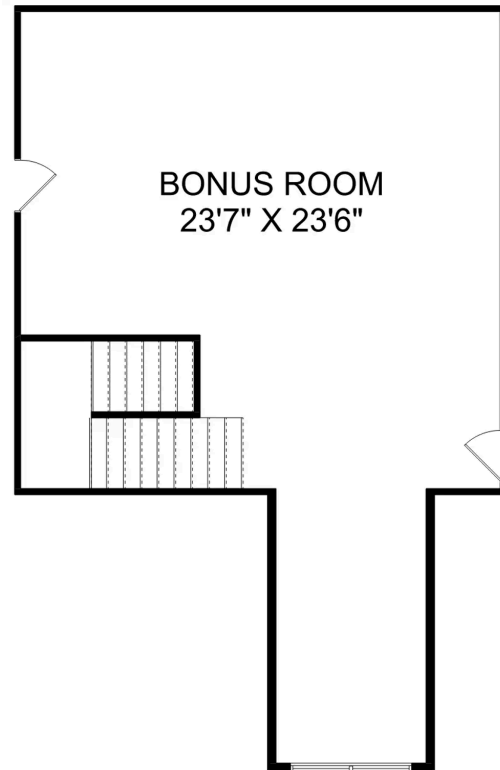
**BATHS**  
**2.5**

**SQ FT**  
**2,904**

**PARKING**  
**2**



THE ROCKFORD BONUS MAIN FLOOR



THE ROCKFORD BONUS UPPER FLOOR

## The Rockford with Bonus

With its charming, full-brick exterior, it's no wonder why The Rockford's our best-selling floor plan! A wall of windows floods the family room with natural light, and the kitchen invites you to cook – welcoming you with an oversized island, stainless-steel appliances and a large corner pantry. The isolated Master Suite features plenty of room and a massive walk-in closet.

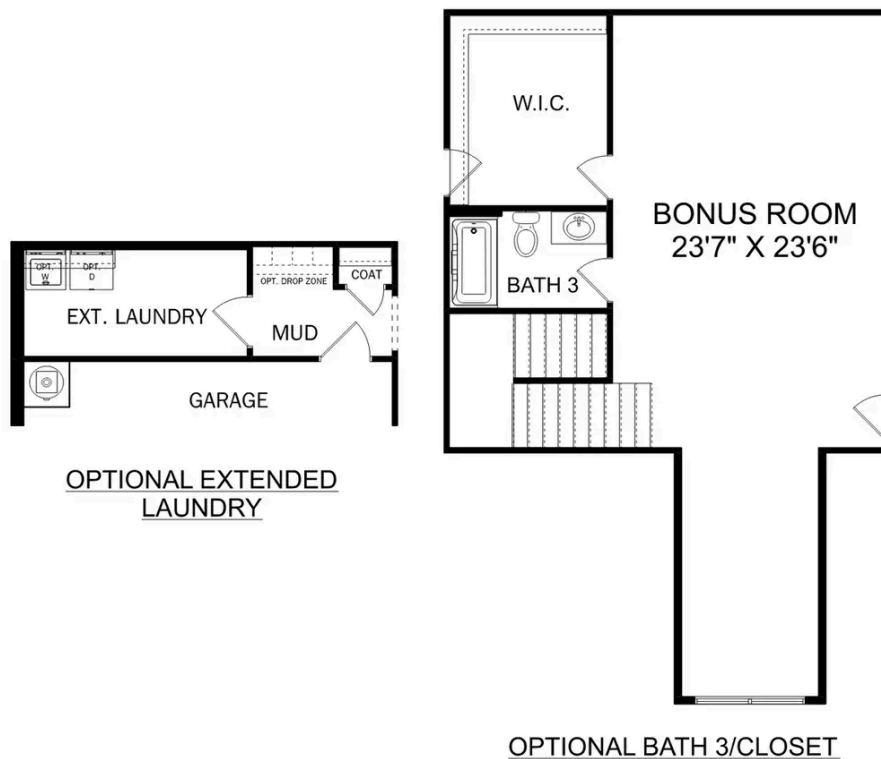
Make it your own with The Rockford's flexible floor plan, and consider replacing the home office with a fourth bedroom. It's your choice. Just know that offerings vary by location, so please discuss our standard features and upgrade options with your community's agent.

BEDS  
**3**

BATHS  
**2.5**

SQ FT  
**2,904**

GARAGE  
**2**



THE ROCKFORD OPTIONS



# The Lanier



## Description

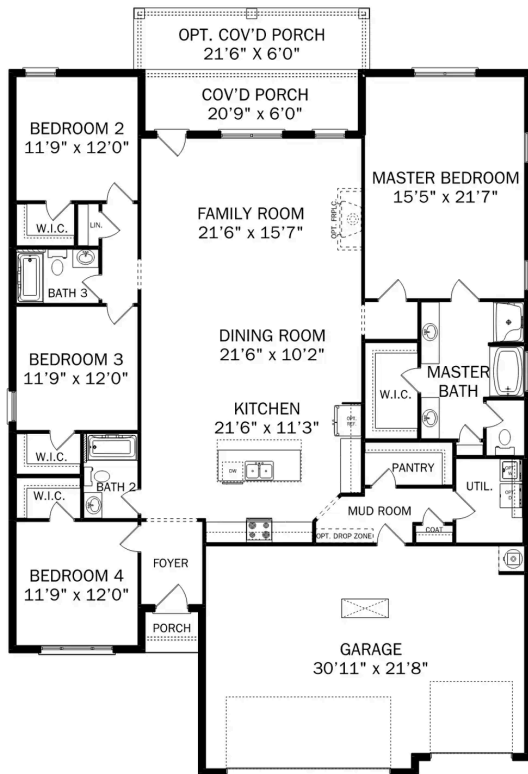
Within The Lanier's charming, full-brick exterior lies four bedrooms and plenty of space. The three-car garage leads into the home's mud room. The kitchen features a large pantry, double-sided island and more than enough counter space. Once there you'll discover the home's biggest feature – the huge, open-concept layout.

**BEDS**  
**4**

**BATHS**  
**3**

**SQ FT**  
**2,411**

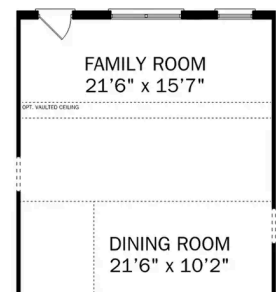
**PARKING**  
**3**



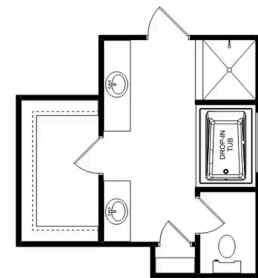
**THE LANIER**



**OPTIONAL TRAY  
CEILING**



**OPTIONAL VAULTED  
CEILING**



**OPTIONAL LUXURY  
MASTER BATH**

**THE LANIER OPTIONS**

# The Harrison

## Exterior Options

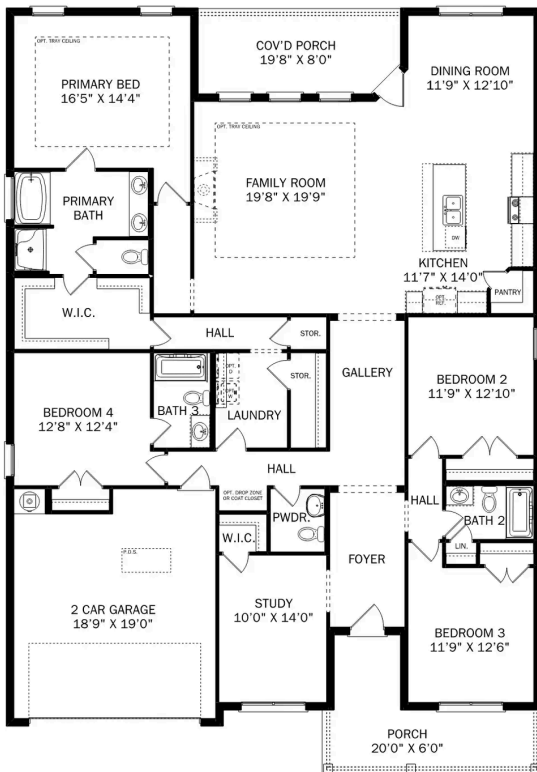


**BEDS**  
**4**

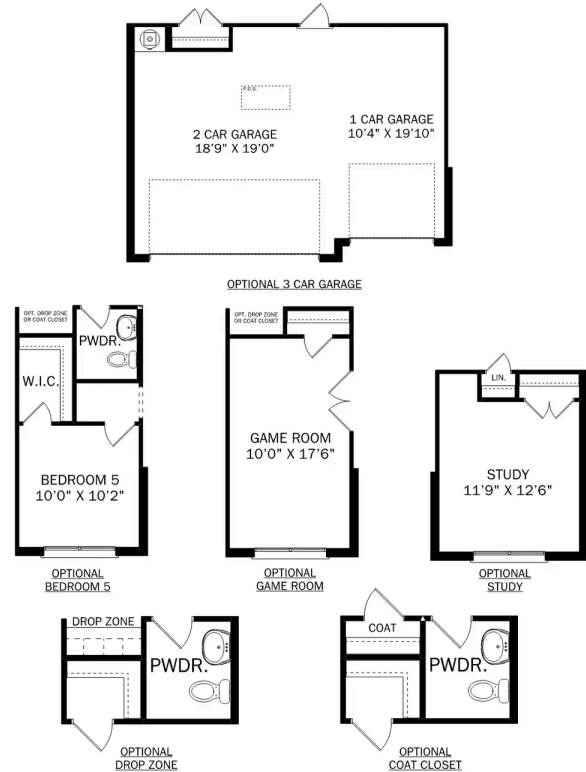
**BATHS**  
**3.5**

**SQ FT**  
**2,678**

**PARKING**  
**2**



**THE HARRISON**



**THE HARRISON OPTIONS**

# The Harrison with Bonus



## Description

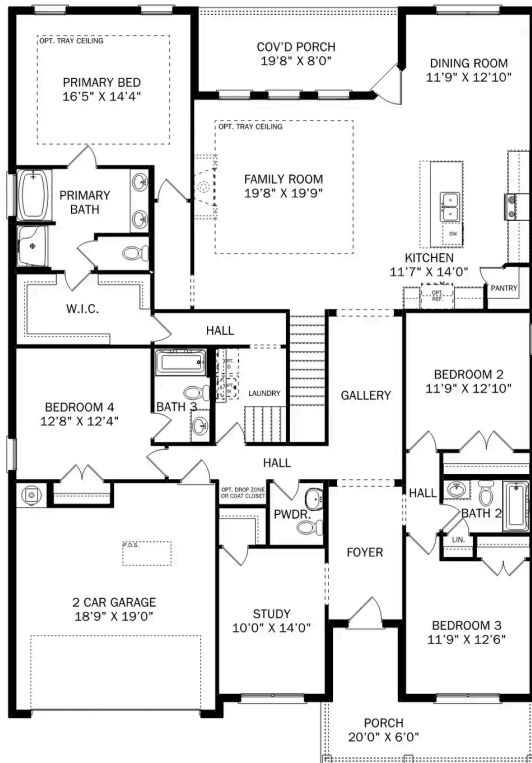
From its charming brick exterior to its open-concept kitchen/family room, The Harrison is perfect for entertaining. Its large kitchen island invites guests to pull up a chair, and its four spacious bedrooms ensure everyone has enough room.

**BEDS**  
**4**

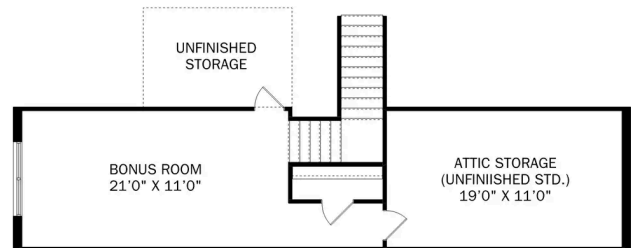
**BATHS**  
**3.5**

**SQ FT**  
**2,992**

**PARKING**  
**2**



THE HARRISON BONUS MAIN FLOOR



THE HARRISON BONUS UPPER FLOOR



## The Harrison with Bonus

From its charming brick exterior to its open-concept kitchen/family room, The Harrison is perfect for entertaining. Its large kitchen island invites guests to pull up a chair, and its four spacious bedrooms ensure everyone has enough room. The downstairs study offers a brief respite from the hustle and bustle, and the covered porch welcomes your family to grill and relax.

The Master Suite steals the show as its windows cast warm, natural light across the large room. The large walk-in closet is ready to handle your wardrobe, and the adjoining storage closet leads right into the laundry room – making laundry day significantly easier.

BEDS  
**4**

BATHS  
**3.5**

SQ FT  
**2,992**

GARAGE  
**2**



THE HARRISON BONUS OPTIONS

# The Madison A

## Exterior Options



**BEDS**  
**5**

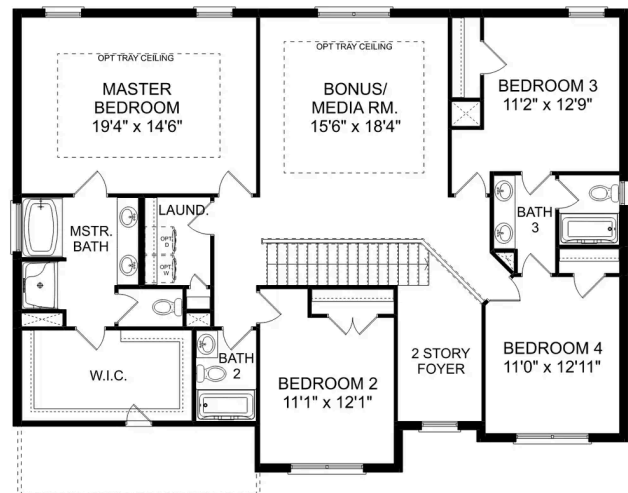
**BATHS**  
**4**

**SQ FT**  
**3,199**

**PARKING**  
**2**



THE MADISON MAIN FLOOR



THE MADISON UPPER FLOOR

## The Madison A

Behind the Madison's gorgeous brick exterior lies a massive layout, featuring five bedrooms, an elegant dining room and a welcoming study. From the designer kitchen's stainless-steel appliances to its oversized island, you'll want to make all your meals at home. The upstairs bonus room is perfect for family movie nights, and the Master Suite features a huge walk-in closet!

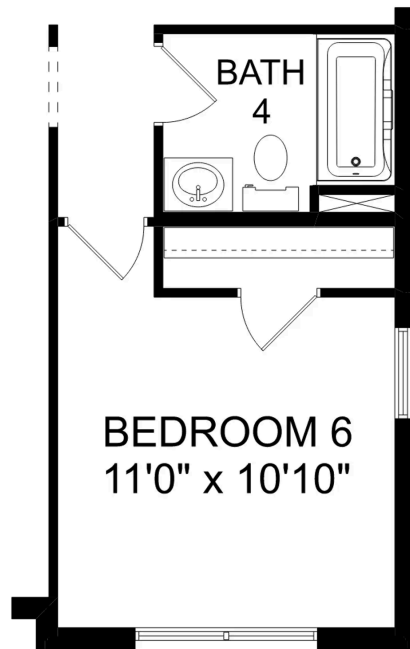
Make it your own with The Madison's flexible floor plan. Just know that offerings vary by location, so please discuss our standard features and upgrade options with your community's agent.

BEDS  
**5**

BATHS  
**4**

SQ FT  
**3,199**

GARAGE  
**2**



### OPT. BEDROOM 6

#### THE MADISON OPTIONS





Kendall Downs in Toney, AL

Call (256) 561-9148  
DAVIDSONHOMES.COM

# The Emory



## Description

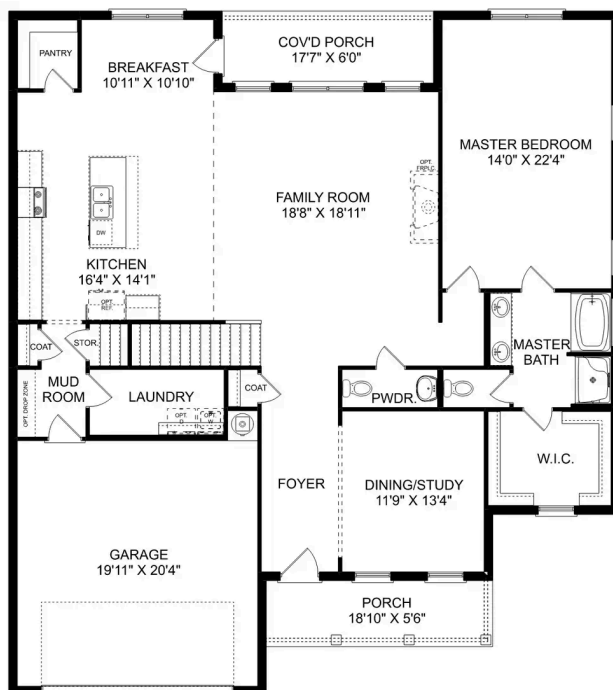
Enter The Emory, and you'll immediately discover why it's one of our most-loved plans. From its elegant dining room to its covered porch, this home has everything you need – and more! The designer kitchen features an oversized island, and the open-concept layout makes The Emory feel even larger.

**BEDS**  
**4**

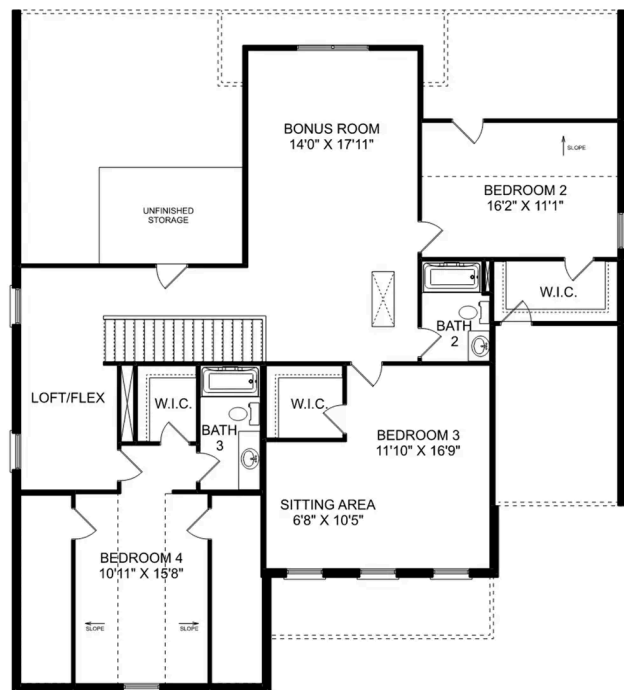
**BATHS**  
**3.5**

**SQ FT**  
**3,563**

**PARKING**  
**2**



THE EMORY MAIN FLOOR



THE EMORY UPPER FLOOR

Copyright 2024 Davidson Homes, Inc. | All Rights Reserved | Davidson Homes is a leading builder of quality new homes across the Southeast. Davidson Homes reserves the right to adjust items listed without prior notice or obligation. Such items may include, but are not limited to, options, included features and community information, pricing, amenities, square footage, terms or availability. Features, options, floor plans, elevations, colors, dimensions and photographs are for illustration purposes and may vary from homes built. Please see your community specialist for details. Equal housing lender. Last updated 03/07/2023.

