

Creek Grove

Davidson Homes in New Market, AL

Welcome to Creek Grove, where Davidson Homes is proud to offer stunning single-family homes designed for your family's comfort and style. Our community offers an ideal setting for professionals wanting an easy commute to Rocket City from a laid-back, family-friendly environment. Creek Grove boasts excellent proximity to the Land Trust of North Alabama's hiking trails, Sharon Johnston Park, and Kayaking on the Flint River.

Features

3-Car Garage Options
Side Entry Garage Options
USDA Eligible

Local Schools

Madison County School Di...
Riverton Elementary
Riverton Intermediate
Buckhorn Middle
Buckhorn High

Utilities

Electric: Huntsville Utilities
Water: Madison County W...



Community Address

304 Creek Grove Ave

New Homes

07

Floor Plans

10

Homes from the

\$280s

Copyright 2024 Davidson Homes, Inc. | All Rights Reserved | Davidson Homes is a leading builder of quality new homes across the Southeast. Davidson Homes reserves the right to adjust items listed without prior notice or obligation. Such items may include, but are not limited to, options, included features and community information, pricing, amenities, square footage, terms or availability. Features, options, floor plans, elevations, colors, dimensions and photographs are for illustration purposes and may vary from homes built. Please see your community specialist for details. Equal housing lender. Last Updated 05/20/2024.





Creek Grove in New Market, AL

Quick Move-In Homes

Stacy Church
Call (256) 926-5158



UPDATED
05/20/2024

HOMES
07

COMMUNITY ADDRESS
304 Creek Grove Ave



\$324,900
4 Beds 3 Baths 2,136 Sq Ft
119 Burdine Street | #92
The Everett Plan



\$394,900
4 Beds 3 Baths 2,453 Sq Ft
307 Creek Grove Avenue | #4
The Shelby C - Side Entry Plan



\$414,900
5 Beds 4 Baths 2,769 Sq Ft
324 Creek Grove Avenue | #14
The Chelsea C - Side Entry Plan



\$298,500
3 Beds 2 Baths 1,620 Sq Ft
118 Burdine Street | #99
The Franklin C Plan



\$369,900
4 Beds 3 Baths 2,453 Sq Ft
327 Creek Grove Avenue | #132
The Shelby C Plan



\$414,900
4 Beds 3.5 Baths 2,767 Sq Ft
315 Creek Grove Avenue | #8
The Chelsea B - Side Entry Plan



\$382,370
5 Beds 4 Baths 2,767 Sq Ft
127 Rose Valley Drive | #62
The Chelsea B Plan





Creek Grove in New Market, AL

Community Homesite Map

Stacy Church
Call (256) 926-5158



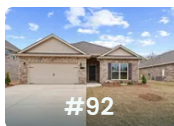
CREEK GROVE

New Market, Alabama



MOVE-IN READY QUICK MOVE-IN COMING SOON AVAILABLE SOLD

Featured Homes for Sale



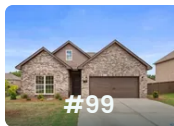
The Everett
119 Burdine Street
\$324,900



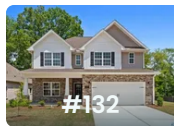
The Shelby C - Side Entry
307 Creek Grove Avenue
\$394,900



The Chelsea C - Side Entry
324 Creek Grove Avenue
\$414,900



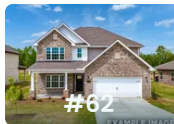
The Franklin C
118 Burdine Street
\$298,500



The Shelby C
327 Creek Grove Avenue
\$369,900



The Chelsea B - Side Entry
315 Creek Grove Avenue
\$414,900



The Chelsea B
127 Rose Valley Drive
\$382,370



The Franklin C



Description

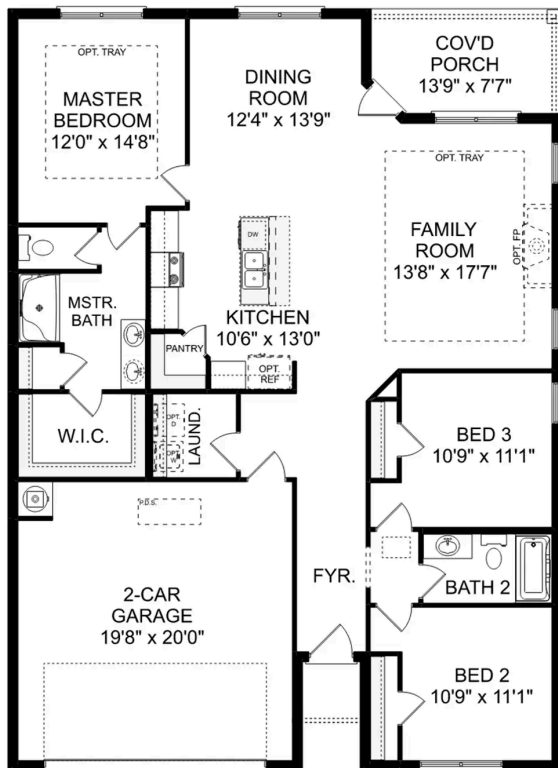
Within this cozy, one-level home lies a modern use of space. From the kitchen's large island to the family room's spacious open-concept, you're surrounded by owner-centric design.

BEDS
3

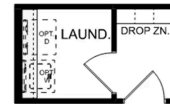
BATHS
2

SQ FT
1,620

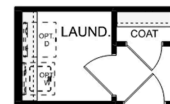
PARKING
2



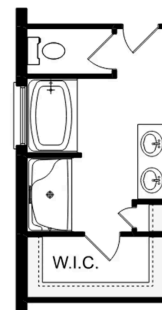
THE FRANKLIN C



OPT. DROP ZONE



OPT. COAT CLOSET



OPT. DELUXE MASTER BATH

THE FRANKLIN C OPTIONS

The Daphne C

Exterior Options

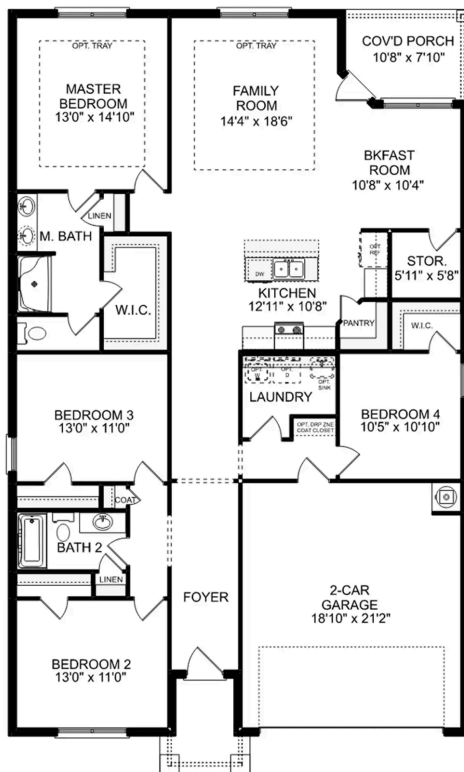


BEDS
4

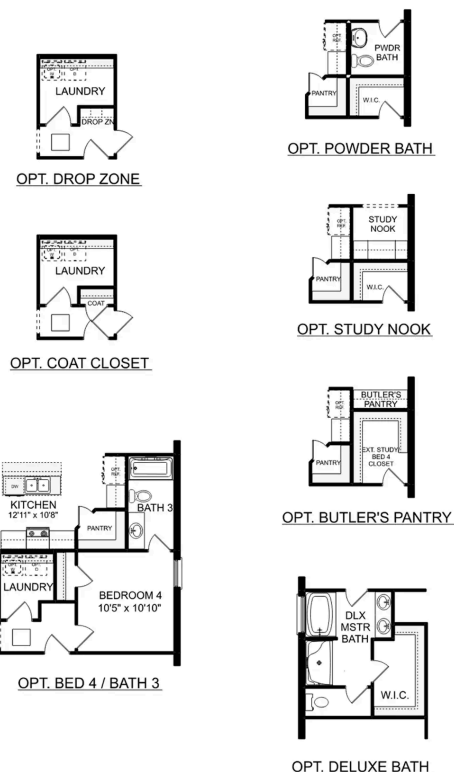
BATHS
2

SQ FT
1,964

PARKING
2



THE DAPHNE C



THE DAPHNE C OPTIONS



Creek Grove in New Market, AL

Call (256) 926-5158
DAVIDSONHOMES.COM

The Everett

Exterior Options

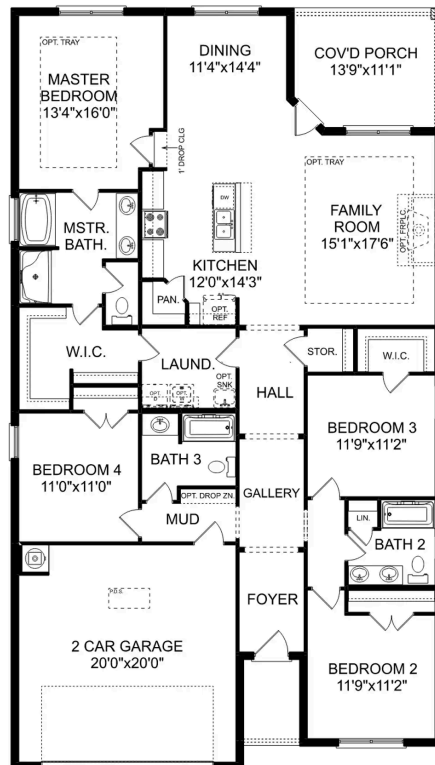


BEDS
4

BATHS
3

SQ FT
2,136

PARKING
2



THE EVERETT



The Aiken



Description

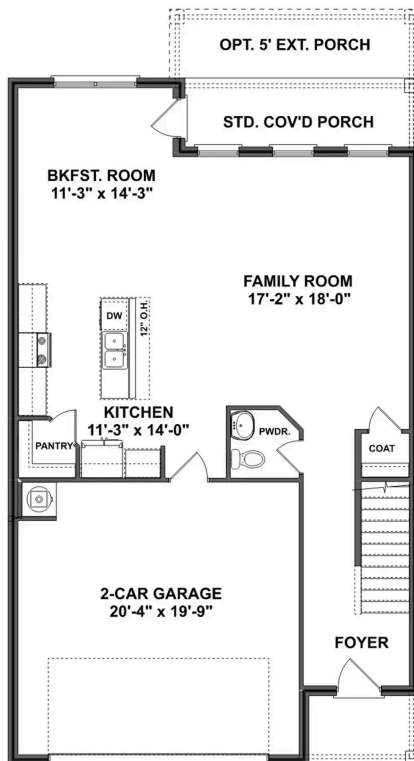
Welcome home to The Aiken floor plan! This charming 2-story home spans across 2,201 square feet and offers a perfect blend of sophistication and functionality. With 3 or 4 bedrooms and 2.5 bathrooms, there's plenty of space for families of all sizes.

BEDS
3

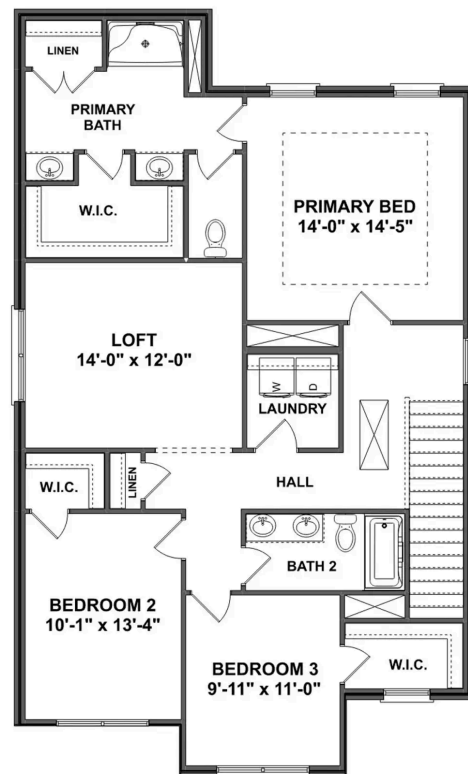
BATHS
2.5

SQ FT
2,201

PARKING
2



THE AIKEN MAIN FLOOR



THE AIKEN UPPER FLOOR

The Aiken

Welcome home to The Aiken floor plan! This charming 2-story home spans across 2,201 square feet and offers a perfect blend of sophistication and functionality. With 3 or 4 bedrooms and 2.5 bathrooms, there's plenty of space for families of all sizes. As you step inside, you're greeted by an inviting open concept floor plan, where the spacious living area seamlessly flows into the dining and kitchen spaces. The stainless-steel appliances and recessed lighting in the kitchen add a touch of modernity, making it a chef's delight. Whether you prefer cozy family dinners or entertaining guests, the covered porch offers a lovely spot for outdoor gatherings, connecting you with the beauty of nature.

BEDS
3

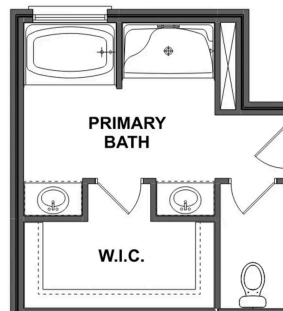
BATHS
2.5

SQ FT
2,201

GARAGE
2



OPT. BEDROOM 4



LUX. PRIMARY BATH

THE AIKEN OPTIONS



Creek Grove in New Market, AL

Call (256) 926-5158
DAVIDSONHOMES.COM

The Shelby A

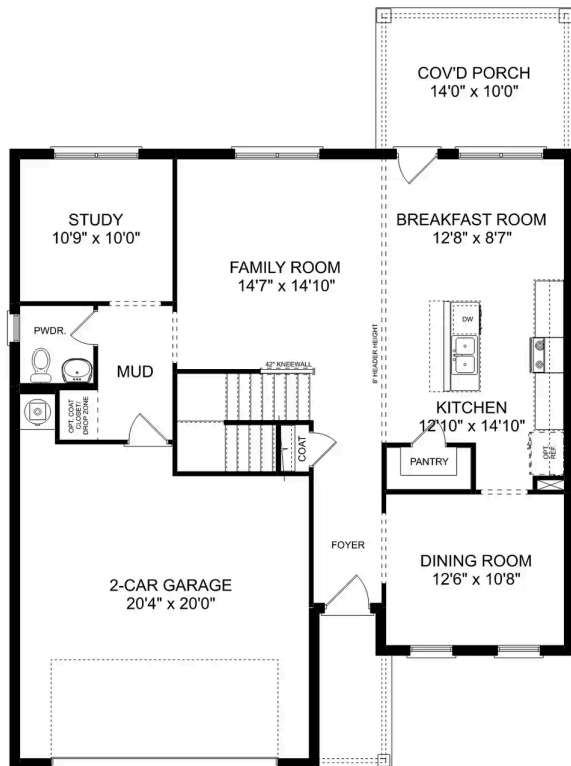


BEDS

BATHS

SQ FT
2,452

PARKING



MAIN FLOOR



UPPER FLOOR



The Shelby A

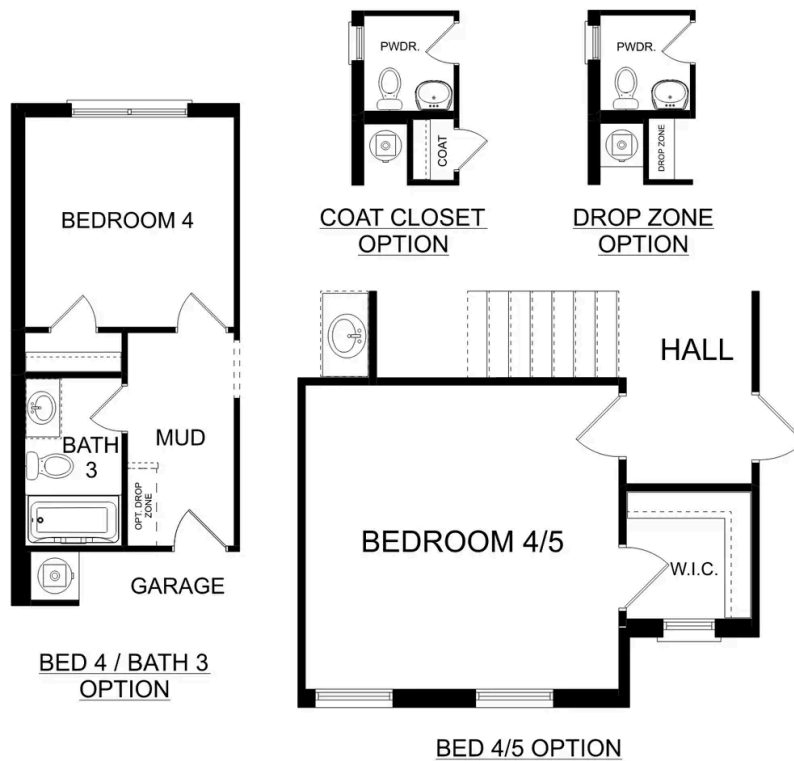
The Shelby welcomes you into a modern, open space, complete with a formal dining room and study. The kitchen overlooks an open-concept family room. The second floor features a spacious master bedroom with a large walk-in closet and master bath along with two additional bedrooms with ample walk-in closets of their own.

BEDS
3

BATHS
2.5

SQ FT
2,452

GARAGE
2



PLAN OPTIONS

The Shelby A - Side Entry

Exterior Options

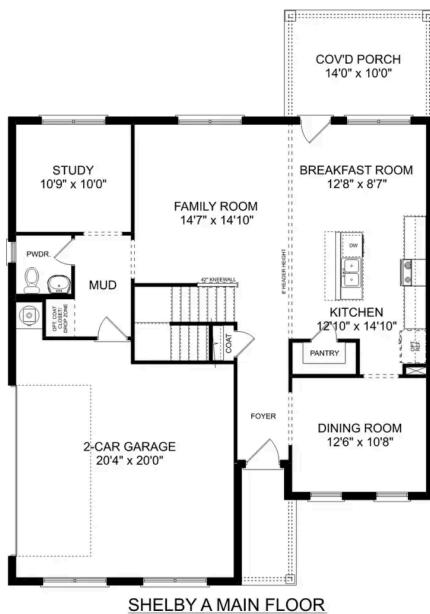


BEDS
3

BATHS
2.5

SQ FT
2,452

PARKING
2



The Shelby A - Side Entry

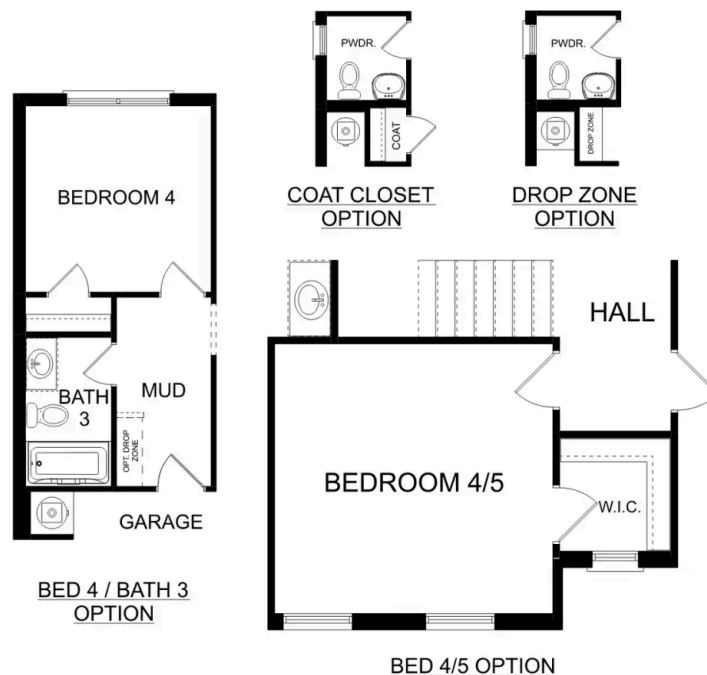
The Shelby welcomes you into a modern, open space, complete with a formal dining room and study. The kitchen overlooks an open-concept family room. The second floor features a spacious master bedroom with a large walk-in closet and master bath along with two additional bedrooms with ample walk-in closets of their own.

BEDS
3

BATHS
2.5

SQ FT
2,452

GARAGE
2



The Charleston D



Description

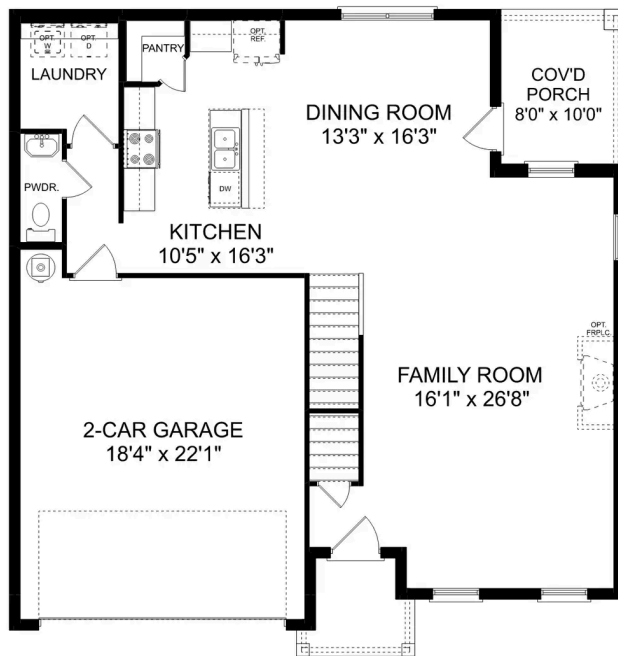
The sky's the limit with The Charleston's two-story layout and massive bonus room. Inside the home's brick exterior, the open-concept kitchen overlooks the huge family room. The Master Suite offers you a personal retreat – complete with large walk-in closet.

BEDS
4

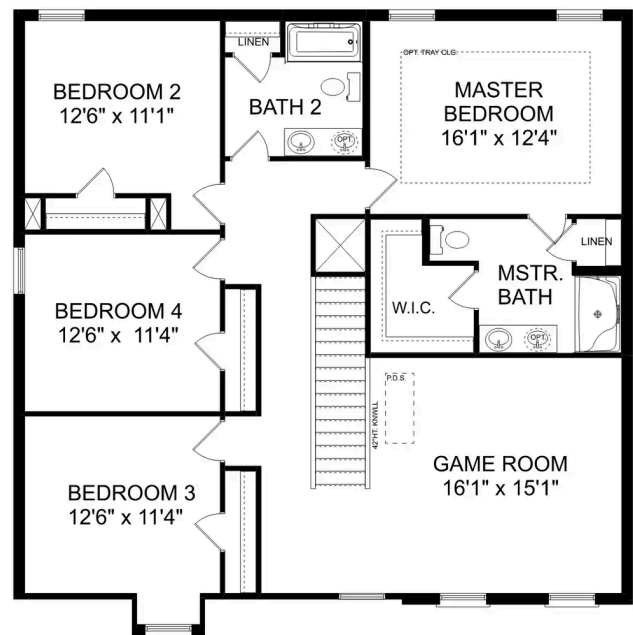
BATHS
2.5

SQ FT
2,505

PARKING
2



THE CHARLESTON D MAIN FLOOR



THE CHARLESTON D UPPER FLOOR

The Charleston D

The sky's the limit with The Charleston's two-story layout and massive bonus room. Inside the home's brick exterior, the open-concept kitchen overlooks the huge family room. The Master Suite offers you a personal retreat – complete with large walk-in closet. Whether you're looking for a game room or a fifth bedroom, the upstairs bonus room gives you all the flexibility you need. Make it your own with The Charleston's flexible floor plan! Just know that offerings vary by location, so please discuss our standard features and upgrade options with your community's agent.

BEDS
4

BATHS
2.5

SQ FT
2,505

GARAGE
2



THE CHARLESTON D OPTIONS

The Chelsea A

Exterior Options

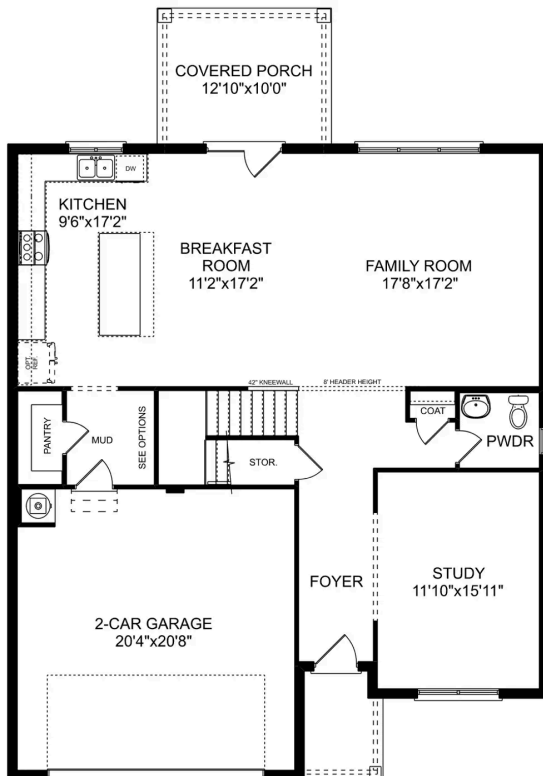


BEDS
4

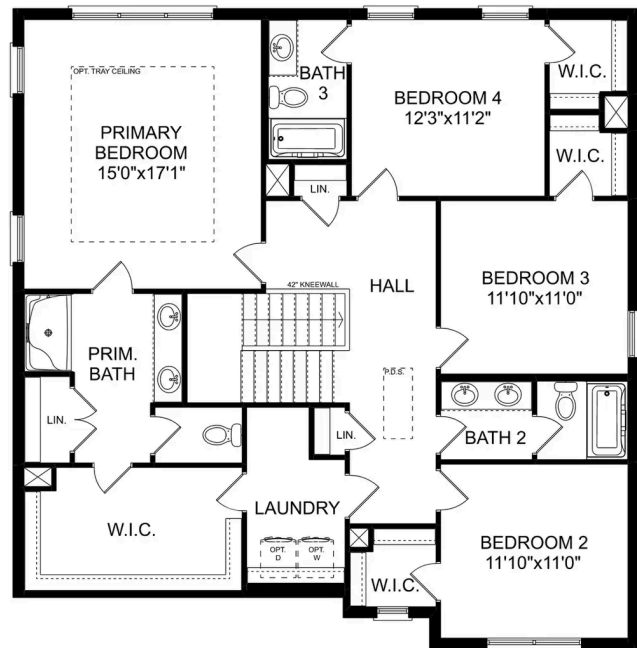
BATHS
3.5

SQ FT
2,769

PARKING
2



MAIN FLOOR



UPPER FLOOR

The Chelsea A

The Chelsea's windows fill the open floor plan with natural light, welcoming you into this charming home. The kitchen showcases ample counterspace, overlooking the breakfast and family room. A large study on the first floor offers potential, and the home's second floor features four bedrooms, each with plenty of closet space. The master bedroom is separate from the other bedrooms for added privacy, and the fourth bedroom features its own private bath.

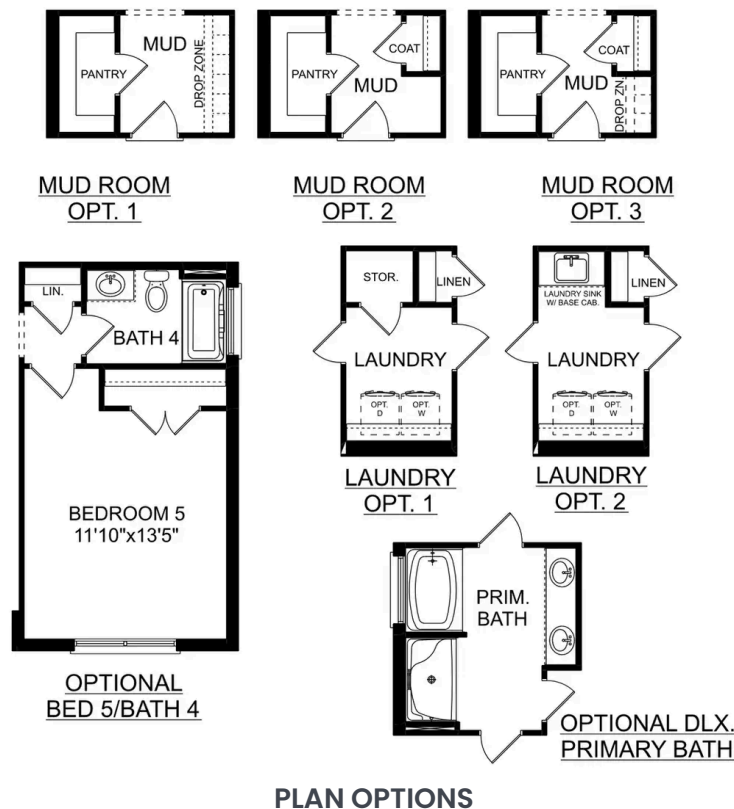
Make it your own with The Chelsea's flexible floor plan. Offerings vary by location, so please discuss your options with your community's agent.

BEDS
4

BATHS
3.5

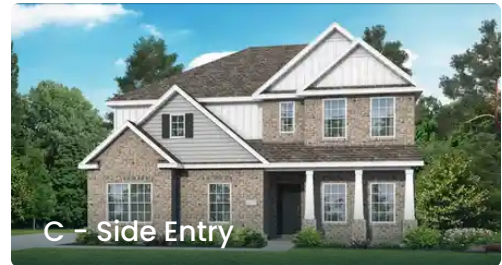
SQ FT
2,769

GARAGE
2



The Chelsea A - Side Entry

Exterior Options

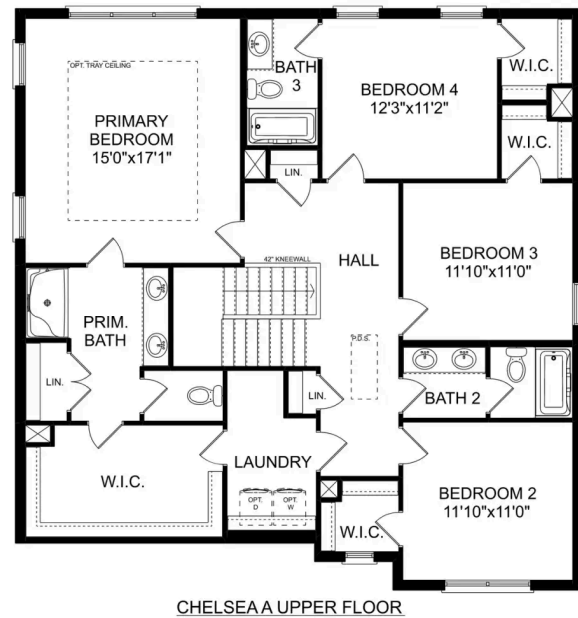
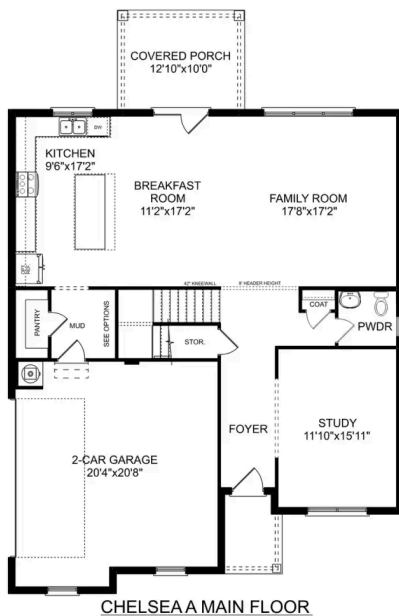


BEDS
4

BATHS
3.5

SQ FT
2,769

PARKING
0



The Chelsea A - Side Entry

The Chelsea's windows fill the open floor plan with natural light, welcoming you into this charming home. The kitchen showcases ample counterspace, overlooking the breakfast and family room. A large study on the first floor offers potential, and the home's second floor features four bedrooms, each with plenty of closet space. The master bedroom is separate from the other bedrooms for added privacy, and the fourth bedroom features its own private bath.

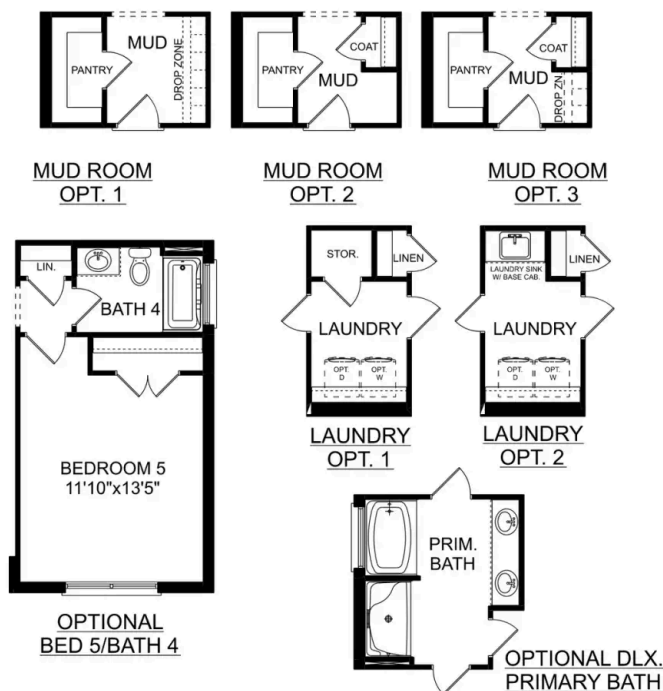
Make it your own with The Chelsea's flexible floor plan. Offerings vary by location, so please discuss your options with your community's agent.

BEDS
4

BATHS
3.5

SQ FT
2,769

GARAGE
0



The Richmond D



Description

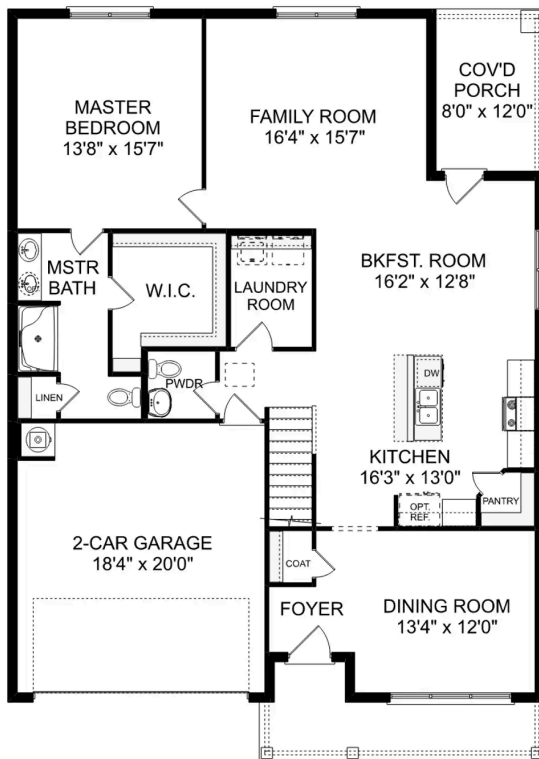
Starring five bedrooms and plenty of space, The Richmond features a sprawling layout! Enter the foyer and discover the elegant dining room to the left. The home quickly expands into an open-concept living space, as the charming kitchen overlooks the breakfast nook and family room.

BEDS
5

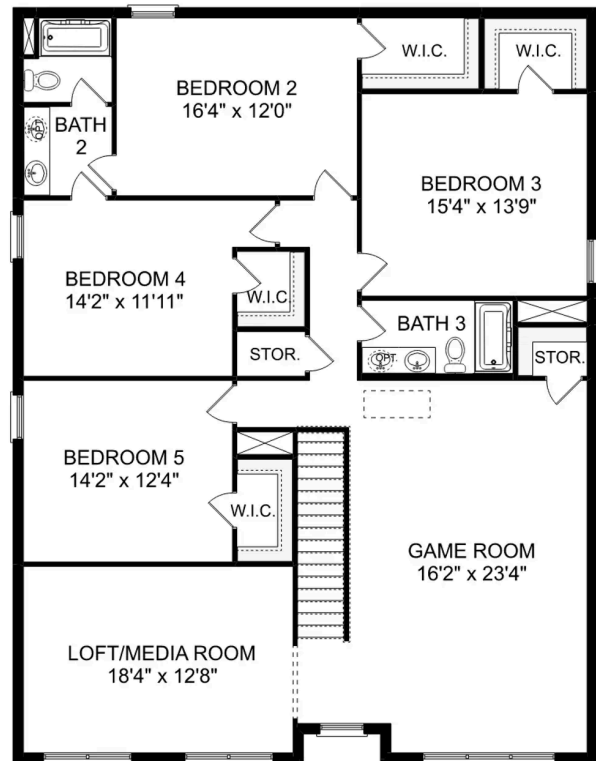
BATHS
3.5

SQ FT
3,537

PARKING
2



THE RICHMOND D MAIN FLOOR



THE RICHMOND D UPPER FLOOR

The Richmond D

Starring five bedrooms and plenty of space, The Richmond features a sprawling layout! Enter the foyer and discover the elegant dining room to the left. The home quickly expands into an open-concept living space, as the charming kitchen overlooks the breakfast nook and family room. Continue through to the Master Suite, featuring a huge walk-in closet.

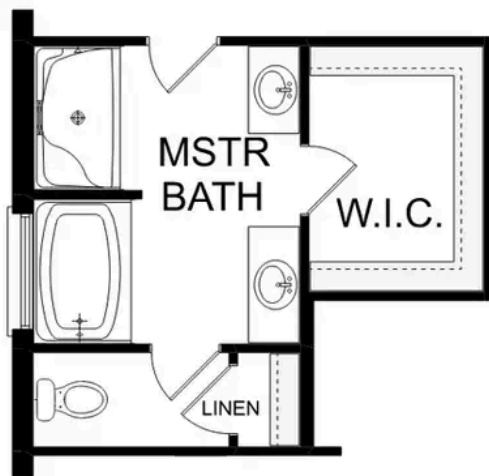
Upstairs, the plan features four more bedrooms, in addition to a game room and media room. Whether you're looking for a home theater or a home gym, The Richmond offers all the space you need.

BEDS
5

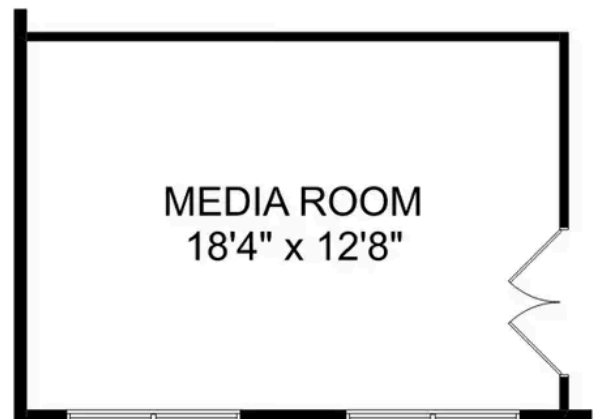
BATHS
3.5

SQ FT
3,537

GARAGE
2



OPTIONAL DELUXE
MASTER BATH



OPTIONAL
MEDIA ROOM

THE RICHMOND D OPTIONS