

# Sierra Vista

Davidson Homes in Rosharon, TX

Welcome to Sierra Vista, a master-planned community located in Rosharon, TX.

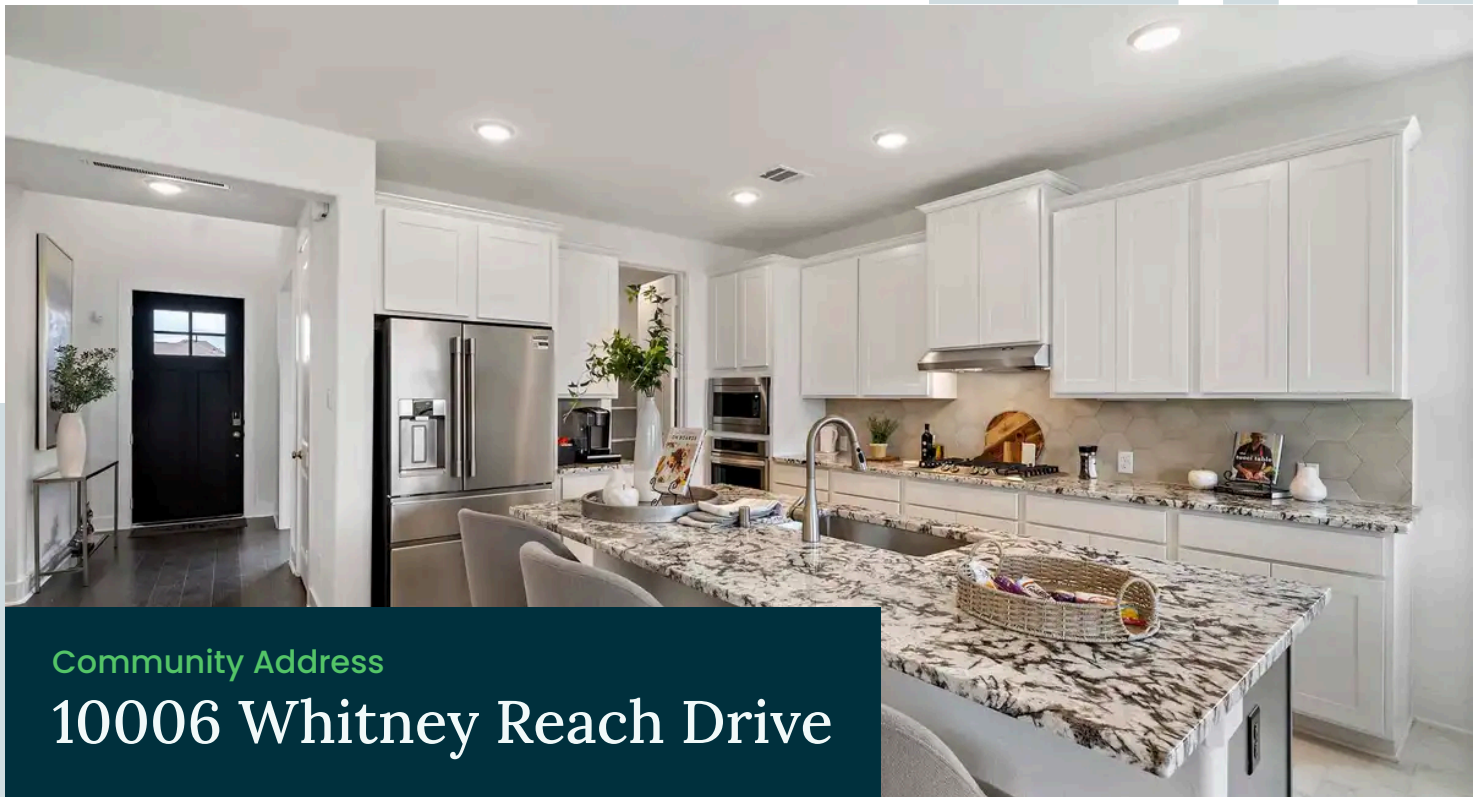
With a convenient location just 20 minutes from downtown Houston, Sierra Vista is the perfect place to call home. Embrace a lifestyle of modern comfort amid tranquil landscapes. Sierra Vista features an amazing list of amenities, including a junior Olympic pool, poolside cabana, fitness center, walking trails and many more coming soon!

## Features

Gated Section  
Junior Olympic Pool  
Walking Trails

## Local Schools

Nichols Mock Elementary  
Iowa Colony Junior High  
Iowa Colony High



Community Address

10006 Whitney Reach Drive

New Homes

11

Floor Plans

11

Homes from the

\$320s

Copyright 2024 Davidson Homes, Inc. | All Rights Reserved | Davidson Homes is a leading builder of quality new homes across the Southeast. Davidson Homes reserves the right to adjust items listed without prior notice or obligation. Such items may include, but are not limited to, options, included features and community information, pricing, amenities, square footage, terms or availability. Features, options, floor plans, elevations, colors, dimensions and photographs are for illustration purposes and may vary from homes built. Please see your community specialist for details. Equal housing lender. Last Updated 05/12/2024.





Sierra Vista in Rosharon, TX

## Quick Move-In Homes

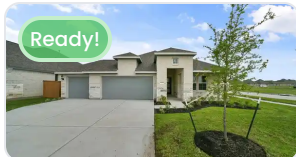
Richard Gregoire  
Call (713) 528-8063



UPDATED  
05/12/2024

HOMES  
11

COMMUNITY ADDRESS  
10006 Whitney Reach Drive



**\$410,575**  
4 Bd 3 Ba 2,153 SF

10818 Amador Peak Drive | #1...  
The Acadia C w/ 3-Car Gar...



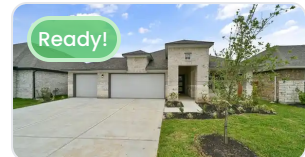
~~\$369,990~~ **\$359,990**  
3 Bd 2 Ba 1,635 SF

10527 Plumas Run Drive | #2...  
The Laguna C w/ 3-Car Gar...



**\$446,655**  
4 Bd 3 Ba 2,557 SF

10507 Plumas Run Drive | #7...  
The George B Plan



~~\$403,420~~ **\$397,990**  
4 Bd 3 Ba 2,153 SF

10522 Plumas Run Drive | #7...  
The Acadia C w/ 3-Car Gar...



**\$395,600**  
4 Bd 3 Ba 2,153 SF

10710 Amador Peak Drive | #1...  
The Acadia B w/ 3-Car Gar...



**\$374,990**  
3 Bd 2.5 Ba 1,841 SF

10706 Amador Peak Drive | #...  
The Riviera B w/ 3-Car Gara...



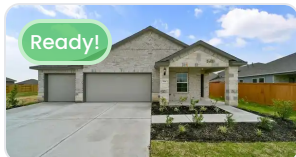
~~\$472,100~~ **\$459,990**  
4 Bd 3 Ba 2,557 SF

10711 Amador Peak Drive | #1...  
The George A Plan



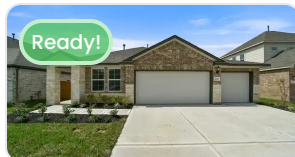
**\$384,990**  
3 Bd 2.5 Ba 1,841 SF

10523 Plumas Run Drive | #0...  
The Riviera C w/ 3-Car Gar...



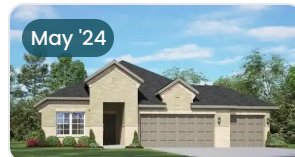
**\$389,990**  
3 Bd 2.5 Ba 1,841 SF

1718 Tioga View Drive | #8-B5  
The Riviera C Plan



**\$374,990**  
3 Bd 2.5 Ba 1,841 SF

10510 Plumas Run Drive | #10...  
The Riviera B Plan



**\$399,990**  
4 Bd 3 Ba 2,153 SF

1822 Homewood Point Lane |...  
The Acadia B w/ 3-Car Gar...







Sierra Vista in Rosharon, TX

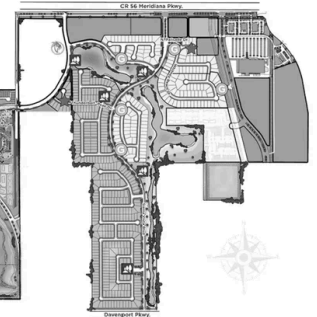
# Community Homesite Map

Richard Gregoire  
Call (713) 528-8063



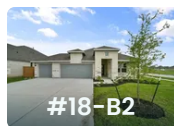
## MAP OVERVIEW

### Sierra Vista

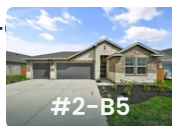


MOVE-IN READY QUICK MOVE-IN COMING SOON AVAILABLE SOLD

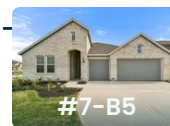
## Featured Homes for Sale



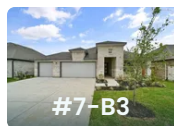
**The Acadia C with 3-Car Garage**  
10818 Amador Peak Drive  
**\$410,575**



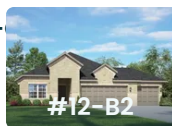
**The Laguna C with 3-Car Garage**  
10527 Plumas Run Drive  
**\$359,990**



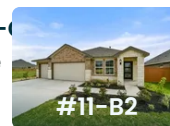
**The George B**  
10507 Plumas Run Drive  
**\$446,655**



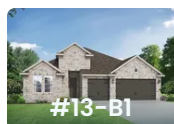
**The Acadia C with 3-Car Garage**  
10522 Plumas Run Drive  
**\$397,990**



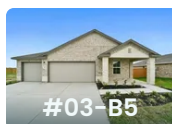
**The Acadia B with 3-Car Garage**  
10710 Amador Peak Drive  
**\$395,600**



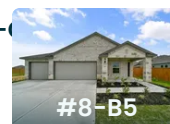
**The Riviera B with 3-Car Garage**  
10706 Amador Peak Drive  
**\$374,990**



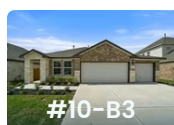
**The George A**  
10711 Amador Peak Drive  
**\$459,990**



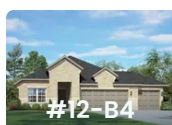
**The Riviera C with 3-Car Garage**  
10523 Plumas Run Drive  
**\$384,990**



**The Riviera C**  
1718 Tioga View Drive  
**\$389,990**



**The Riviera B**  
10510 Plumas Run Drive  
**\$374,990**



**The Acadia B with 3-Car Garage**  
1822 Homewood Point Lane  
**\$399,990**

Copyright 2024 Davidson Homes, Inc. | All Rights Reserved | Davidson Homes is a leading builder of quality new homes across the Southeast. Davidson Homes reserves the right to adjust items listed without prior notice or obligation. Such items may include, but are not limited to, options, included features and community information, pricing, amenities, square footage, terms or availability. Features, options, floor plans, elevations, colors, dimensions and photographs are for illustration purposes and may vary from homes built. Please see your community specialist for details. Equal housing lender.



# The Laguna A with 3-Car ...

## Exterior Options



B with 3-Car Garage



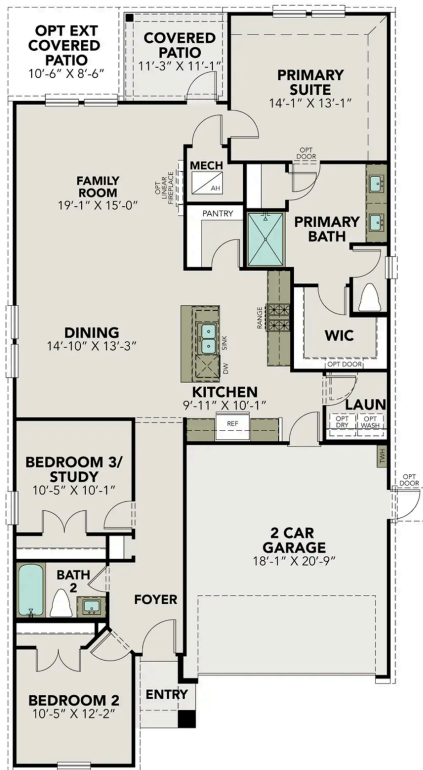
C with 3-Car Garage

**BEDS**  
**3**

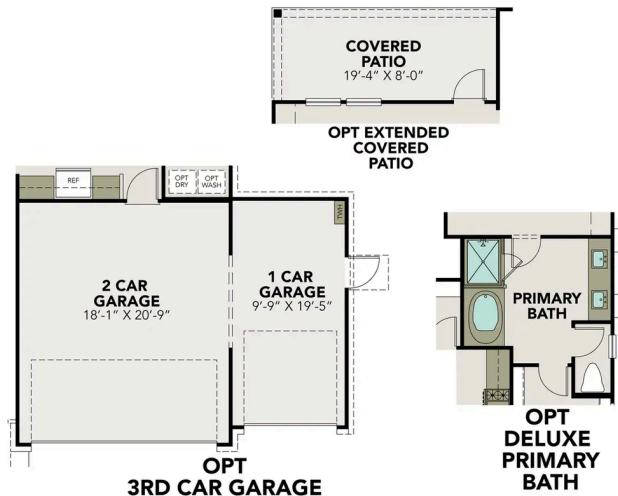
**BATHS**  
**2**

**SQ FT**  
**1,635**

**PARKING**  
**3**



**MAIN FLOOR PLAN**



**OPTIONS**

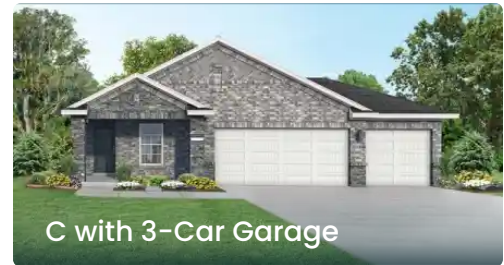


## The Riviera A with 3-Car ...

### Exterior Options



B with 3-Car Garage



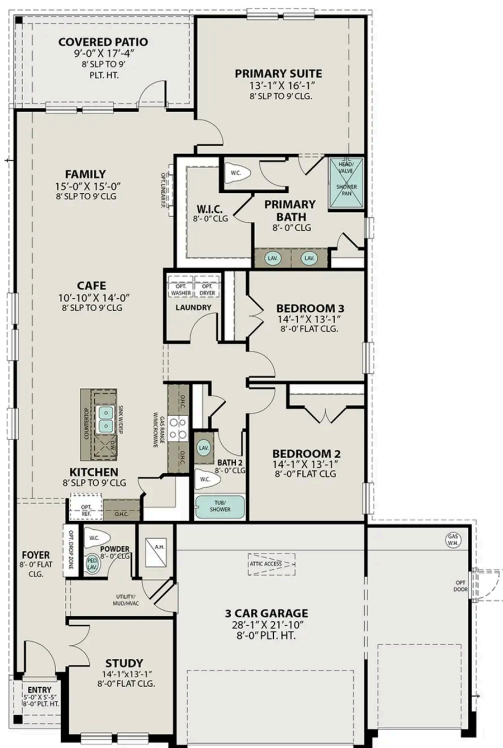
C with 3-Car Garage

**BEDS**  
**3**

**BATHS**  
**2.5**

**SQ FT**  
**1,841**

**PARKING**  
**3**



**MAIN FLOOR PLAN**



**OPT. DELUXE OWNER'S BATH**

**OPTIONS**

# The Diana A



**BEDS**  
**3**

**BATHS**  
**2**

**SQ FT**  
**1,875**

**PARKING**  
**2**

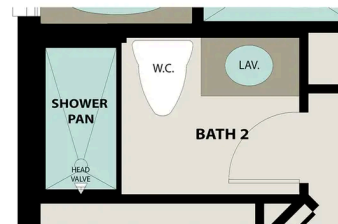
## Exterior Options



**MAIN FLOOR PLAN**



**OPT. SUPER SHOWER**



**OPT. I.L.O. TUB AT BATH 2**

**PLAN OPTIONS**

# The Acadia A with 3-Car ...

## Exterior Options

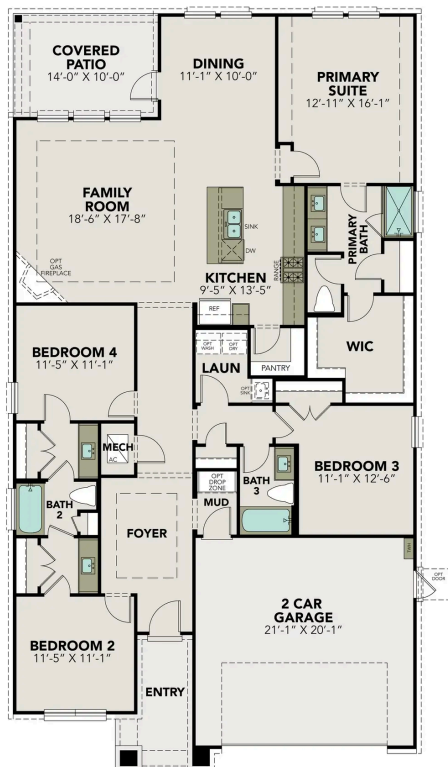


**BEDS**  
**4**

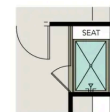
**BATHS**  
**3**

**SQ FT**  
**2,153**

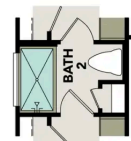
**PARKING**  
**3**



**MAIN FLOOR PLAN**



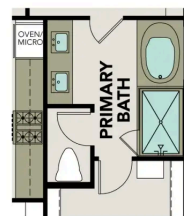
**OPT  
PRIMARY  
SHOWER  
W/SEAT**



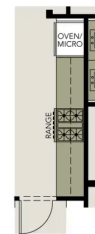
**OPT  
SHOWER I.L.O.  
TUB AT BATH 2**



**OPT  
SHOWER I.L.O.  
TUB AT BATH 3**



**OPT  
DELUXE  
PRIMARY  
BATH**



**OPT  
GOURMET  
KITCHEN**

**OPTIONS**

**OPTIONS**





Sierra Vista in Rosharon, TX

Call (713) 528-8063  
DAVIDSONHOMES.COM

## The Edward A



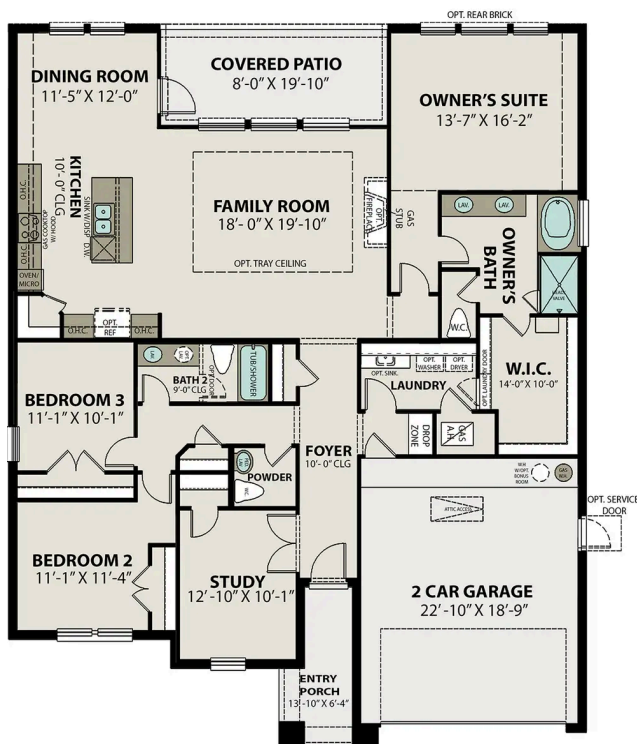
**BEDS**  
**3**

**BATHS**  
**2.5**

**SQ FT**  
**2,160**

**PARKING**  
**2**

### Exterior Options



MAIN FLOOR PLAN



PLAN OPTIONS

Copyright 2024 Davidson Homes, Inc. | All Rights Reserved | Davidson Homes is a leading builder of quality new homes across the Southeast. Davidson Homes reserves the right to adjust items listed without prior notice or obligation. Such items may include, but are not limited to, options, included features and community information, pricing, amenities, square footage, terms or availability. Features, options, floor plans, elevations, colors, dimensions and photographs are for illustration purposes and may vary from homes built. Please see your community specialist for details. Equal housing lender. Last updated 03/12/2024.



# The Elizabeth A



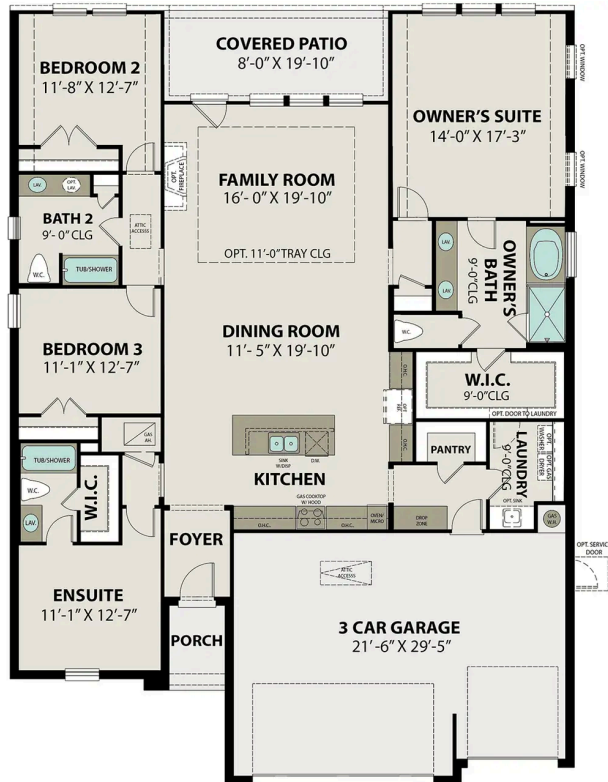
**BEDS**  
**4**

**BATHS**  
**3**

**SQ FT**  
**2,300**

**PARKING**  
**3**

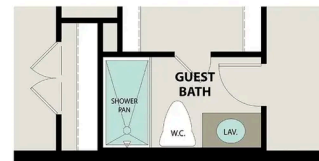
## Exterior Options



**MAIN FLOOR PLAN**



**SHOWER I.L.O.  
TUB AT BATH 2**



**SHOWER I.L.O.  
TUB AT GUEST BATH**

**PLAN OPTIONS**

# The Tierra A



**BEDS**  
**4**

**BATHS**  
**2.5**

**SQ FT**  
**2,407**

**PARKING**  
**2**

## Exterior Options



**MAIN FLOOR PLAN**



**UPPER FLOOR PLAN**



## The Tierra A

Welcome to the Tierra! The foyer welcomes guests into a spacious, open concept kitchen/café/family room area. This floor plan features a convenient first floor owners suite with an impressive en suite bath and a spacious closet connected to the home's laundry room. Upstairs, you'll find a versatile game room area and three more bedrooms, giving everyone their own space!

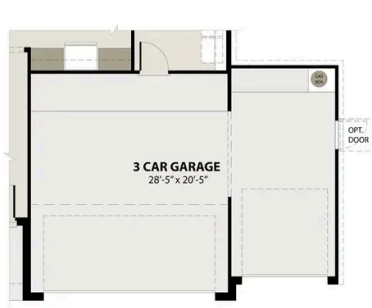
Make it your own with The Tierra's flexible floor plan. Just know that offerings vary by location, so please discuss our standard features and upgrade options with your community's agent.

BEDS  
**4**

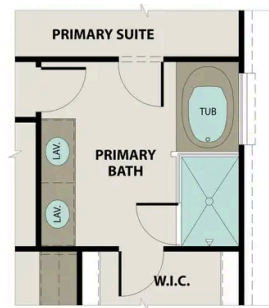
BATHS  
**2.5**

SQ FT  
**2,407**

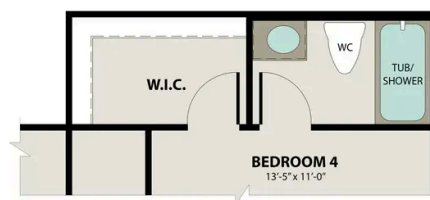
GARAGE  
**2**



OPT. 3-CAR GARAGE



OPT. DELUXE PRIMARY BATH



OPT. BATH 3

### OPTIONS

# The George A

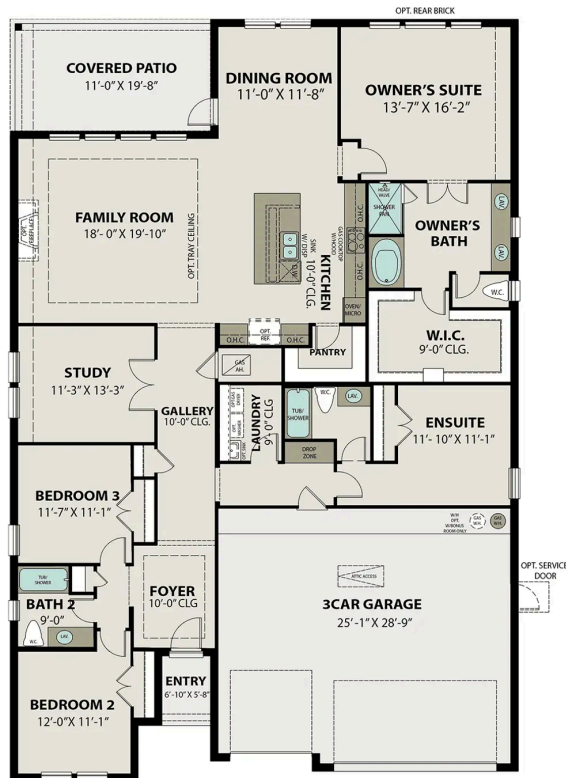


**BEDS**  
**4**

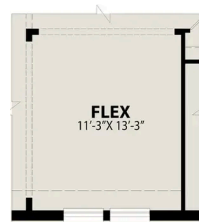
**BATHS**  
**3**

**SQ FT**  
**2,557**

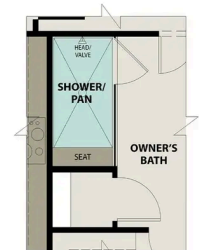
**PARKING**  
**3**



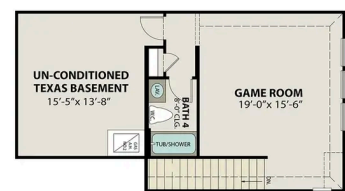
**MAIN FLOOR PLAN**



**OPT. OPEN FLEX ROOM**



**OPT. SUPER SHOWER**



**OPT. BONUS ROOM**



**OPT. BONUS ROOM W/ BEDROOM 5**

**PLAN OPTIONS**

# The Sequoia A with 3-Car ... Exterior Options

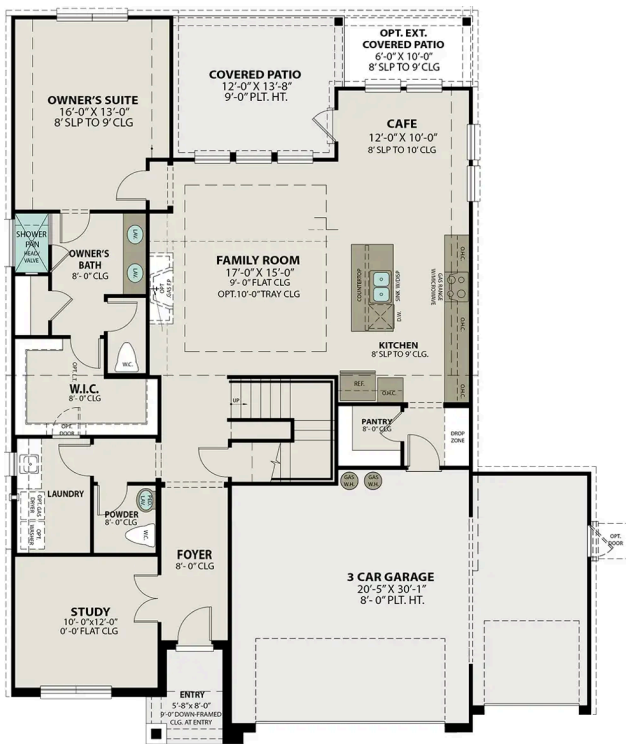


**BEDS**  
**4**

**BATHS**  
**3.5**

**SQ FT**  
**2,743**

**PARKING**  
**3**



**MAIN FLOOR PLAN**



**UPPER FLOOR PLAN**



## The Sequoia A with 3-Car Garage

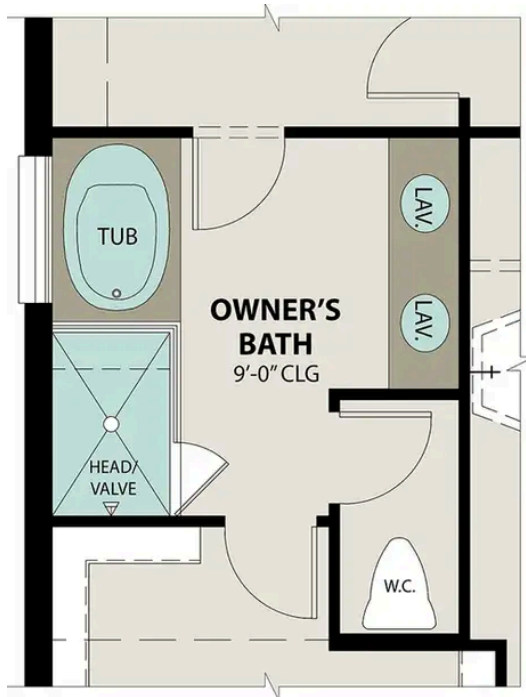
Welcome to the Sequoia! Step inside to find space, style and comfort. The secluded study makes for the perfect home office. Upstairs, the versatile game room space is perfect for playtime! Just down the hall, there's three more bedrooms, each with their own walk-in closets, and two additional bathrooms.

BEDS  
**4**

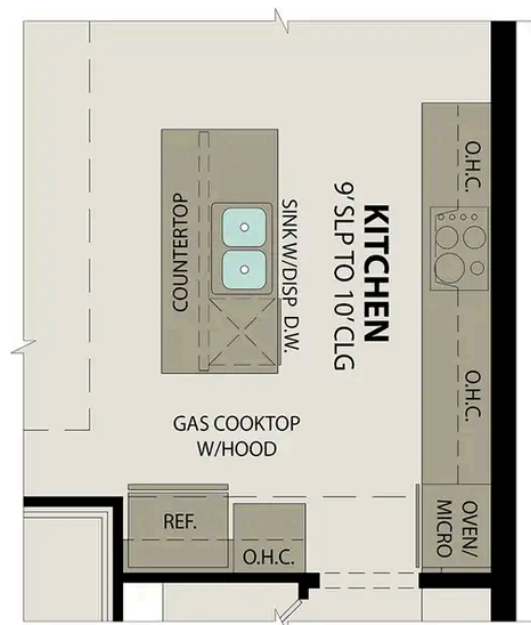
BATHS  
**3.5**

SQ FT  
**2,743**

GARAGE  
**3**



**OPT. DELUXE OWNER'S BATH**



**OPT. GOURMET KITCHEN**

### OPTIONS

# The Philip A

## Exterior Options



**BEDS**  
**4**

**BATHS**  
**3.5**

**SQ FT**  
**2,875**

**PARKING**  
**2**



**MAIN FLOOR PLAN**



**UPPER FLOOR PLAN**

## The Philip A

Welcome to The Philip, a charming two-story home. An extended foyer leads into an open-concept kitchen/café/family room, giving you lots of room to make this home yours. The connecting café area is the perfect place for sharing meals and provides access to the covered patio. The owner's suite is conveniently located on the main floor. Upstairs, you'll find three additional bedrooms, two bathrooms and a game room.

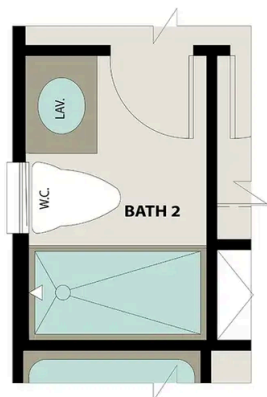
Make it your own with The Philip's flexible floor plan, featuring a variety of options and selections. Just know that offerings vary by location, so please discuss our standard features and upgrade options with your community's agent.

BEDS  
**4**

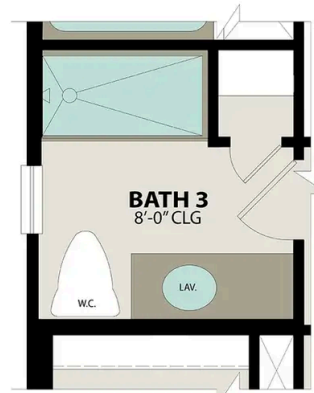
BATHS  
**3.5**

SQ FT  
**2,875**

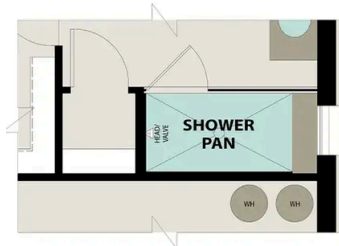
GARAGE  
**2**



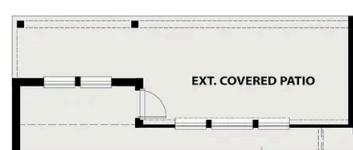
OPT. SHOWER I.L.O. TUB  
AT BATH 2



OPT. SHOWER I.L.O. TUB  
AT BATH 3



OPT. SUPER SHOWER



OPT. EXTENDED COVERED PATIO

### PLAN OPTIONS



## The Victoria A

### Exterior Options

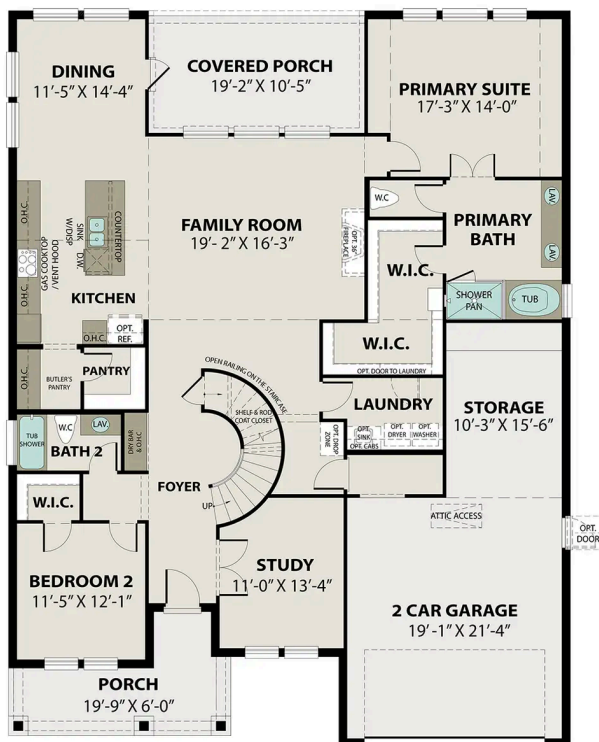


**BEDS**  
**4**

**BATHS**  
**4**

**SQ FT**  
**3,370**

**PARKING**  
**3**



MAIN FLOOR PLAN



UPPER FLOOR PLAN

## The Victoria A

Welcome to the Victoria! This spacious floor plan gives room for everyone with its four bedrooms/bathrooms, study and game room. The kitchen features an oversized island and an adjoining butler's pantry with a full-size pantry off to the side. The primary suite is conveniently located on the main floor showcasing expansive windows allowing for plenty of natural light. Inside the 3-car tandem garage, you'll find plenty of room for both cars and your extra stuff.

Make it your own with The Victoria's flexible floor plan, featuring a variety of options and selections. Just know that offerings vary by location, so please discuss our standard features and upgrade options with your community's agent.

BEDS  
**4**

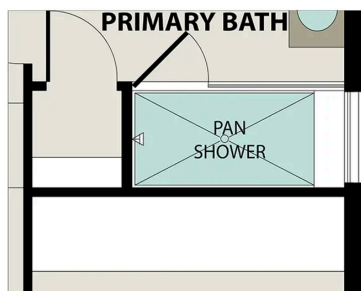
BATHS  
**4**

SQ FT  
**3,370**

GARAGE  
**3**



OPT. BEDROOM 5 I.L.O. GAME ROOM



OPT. SUPER SHOWER

### OPTIONS