

# Hollon Meadow

Davidson Homes in Decatur, AL

Welcome to Hollon Meadow, our newest community in Decatur, Alabama. Davidson Homes is thrilled to offer stunning single-family and townhome plans for all our potential homeowners. We have two new floor plans that offer premium finishes, modern amenities, and stainless appliances designed to enhance your everyday living.

## Features

Stainless Appliances

## Local Schools

Walter Jackson Elementary  
Decatur Middle  
Decatur High

## Utilities

Electric: Joe Wheeler  
Gas: Decatur Utilities  
Water: Decatur Utilities



Community Address

3162 Lea Ln

New Homes

08

Floor Plans

07

Homes from the

\$250s

Copyright 2024 Davidson Homes, Inc. | All Rights Reserved | Davidson Homes is a leading builder of quality new homes across the Southeast. Davidson Homes reserves the right to adjust items listed without prior notice or obligation. Such items may include, but are not limited to, options, included features and community information, pricing, amenities, square footage, terms or availability. Features, options, floor plans, elevations, colors, dimensions and photographs are for illustration purposes and may vary from homes built. Please see your community specialist for details. Equal housing lender. Last Updated 05/20/2024.





Hollon Meadow in Decatur, AL

## Quick Move-In Homes

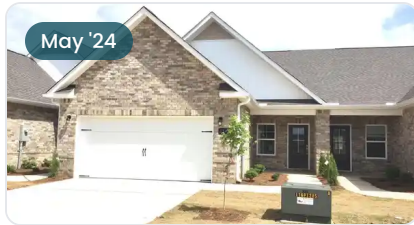
Kevin Holaday  
Call (256) 330-6682



UPDATED  
05/20/2024

HOMES  
08

COMMUNITY ADDRESS  
3162 Lea Ln



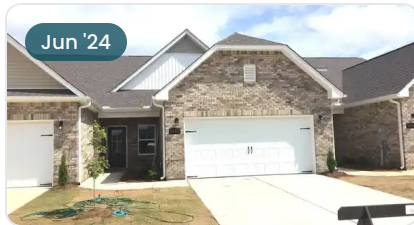
**\$254,900**  
2 Beds 2 Baths 1,444 Sq Ft  
3148 Mead Way SE | #82  
The Cumberland D Plan



**\$294,008**  
3 Beds 2 Baths 1,620 Sq Ft  
3151 Chestnut Court SE | #42  
The Franklin Plan



**\$269,900**  
3 Beds 2 Baths 1,462 Sq Ft  
3154 Mead Way SE | #79  
The Cumberland Plan



**\$254,587**  
2 Beds 2 Baths 1,444 Sq Ft  
3152 Mead Way SE | #80  
The Cumberland B Plan



**\$269,900**  
3 Beds 2 Baths 1,462 Sq Ft  
3146 Mead Way | #83  
The Cumberland B Plan



**\$279,436**  
3 Beds 2 Baths 1,484 Sq Ft  
3139 Chestnut Court SE | #39  
The Asheville Plan



**\$274,777**  
3 Beds 2 Baths 1,484 Sq Ft  
3127 Chestnut Court SE | #36  
The Asheville Plan



**\$308,187**  
4 Beds 2 Baths 1,964 Sq Ft  
3131 Chestnut Court SE | #37  
The Daphne Plan



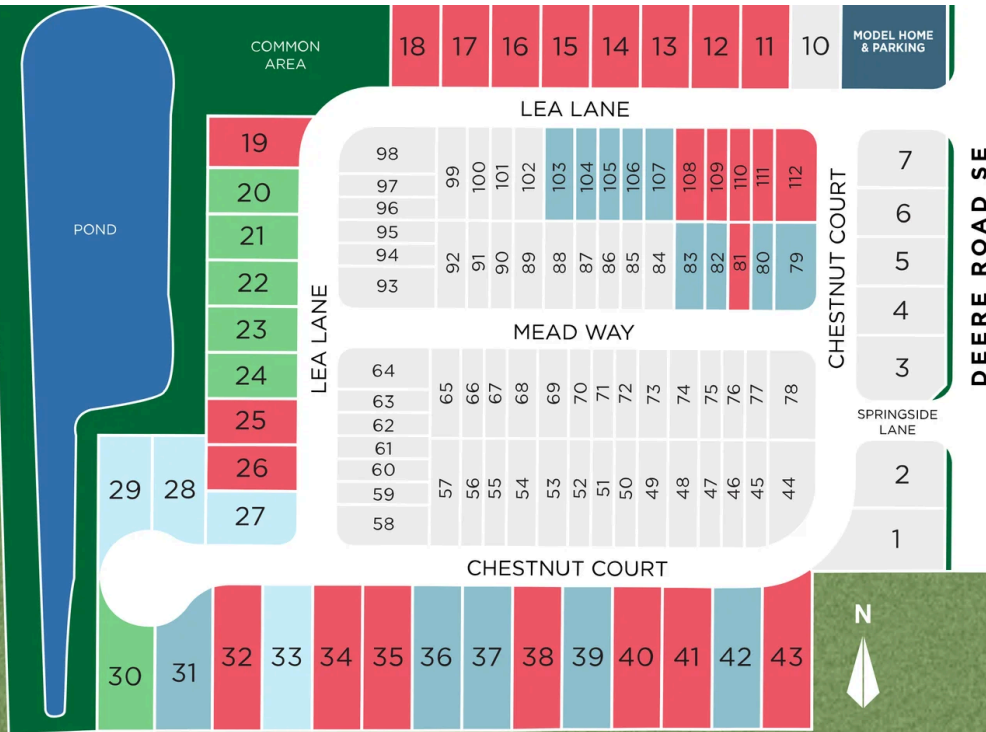




Hollon Meadow in Decatur, AL

## Community Homesite Map

Kevin Holaday  
Call (256) 330-6682



# HOLLON MEADOW

Decatur, Alabama

QUICK MOVE-IN

COMING SOON

AVAILABLE

SOLD

## Featured Homes for Sale



**The Cumberland D**  
3148 Mead Way SE  
**\$254,900**



**The Franklin**  
3151 Chestnut Court SE  
**\$294,008**



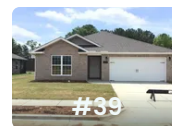
**The Cumberland**  
3154 Mead Way SE  
**\$269,900**



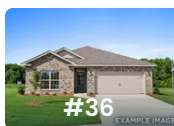
**The Cumberland B**  
3152 Mead Way SE  
**\$254,587**



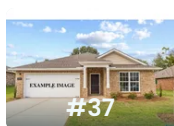
**The Cumberland B**  
3146 Mead Way  
**\$269,900**



**The Asheville**  
3139 Chestnut Court SE  
**\$279,436**



**The Asheville**  
3127 Chestnut Court SE  
**\$274,777**



**The Daphne**  
3131 Chestnut Court SE  
**\$308,187**



# The Cumberland

## Exterior Options

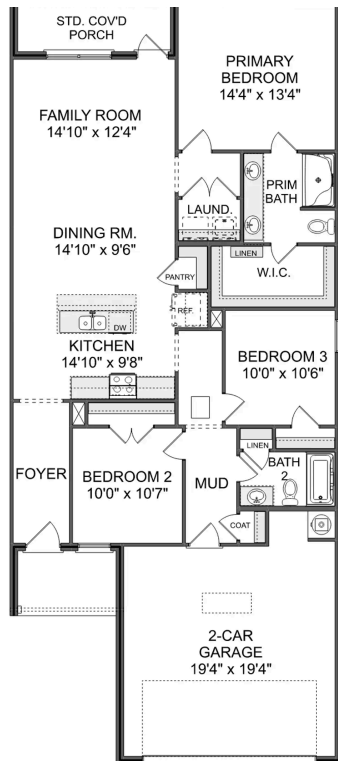


**BEDS**  
**2**

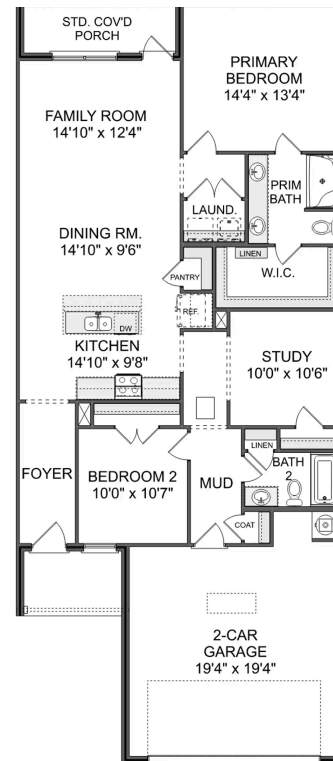
**BATHS**  
**2**

**SQ FT**  
**1,462**

**PARKING**  
**2**



**THE CUMBERLAND A EXTERIOR UNIT MAIN  
FLOOR**



**THE CUMBERLAND A INTERIOR UNIT MAIN  
FLOOR**



# The Asheville

## Exterior Options

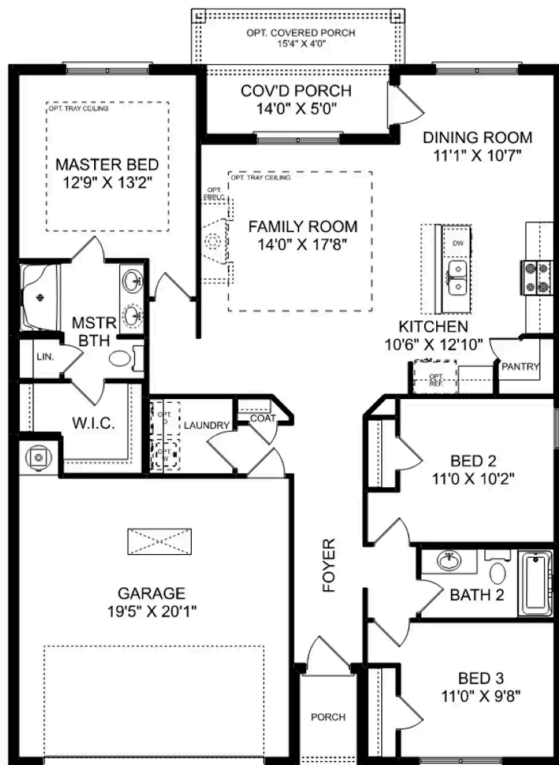


**BEDS**  
**3**

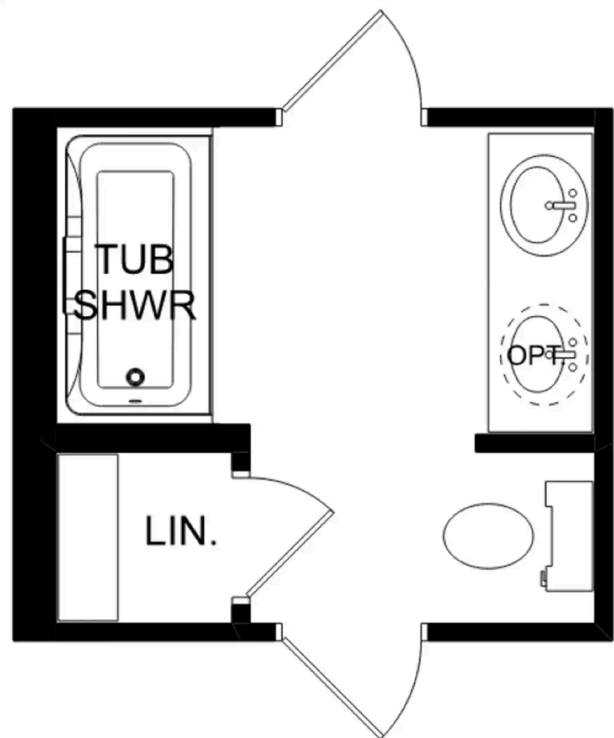
**BATHS**  
**2**

**SQ FT**  
**1,484**

**PARKING**  
**2**



**THE ASHEVILLE**



**THE ASHEVILLE OPTIONS**

# The Franklin



## Exterior Options

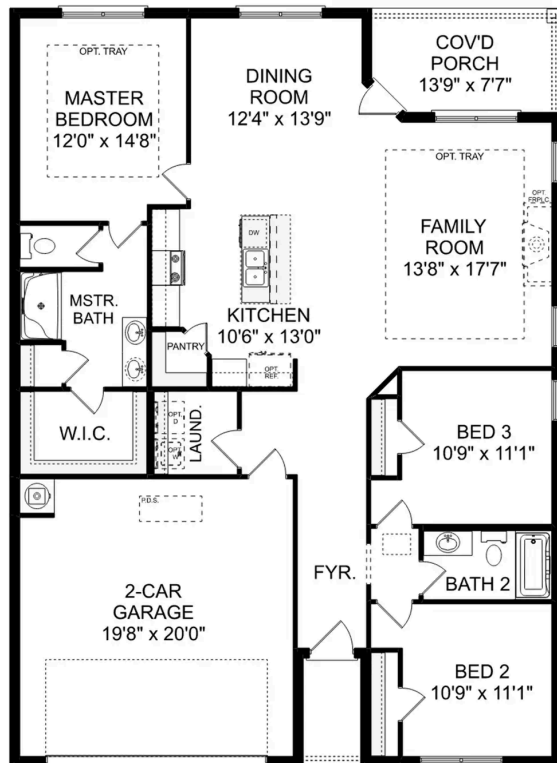


**BEDS**  
**3**

**BATHS**  
**2**

**SQ FT**  
**1,620**

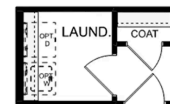
**PARKING**  
**2**



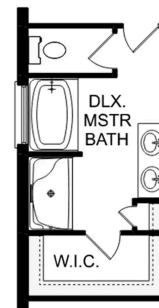
**THE FRANKLIN**



OPT. DROP ZONE



OPT. COAT CLOSET



OPT. DELUXE MASTER BATH

**THE FRANKLIN OPTIONS**



# The Daphne

## Exterior Options

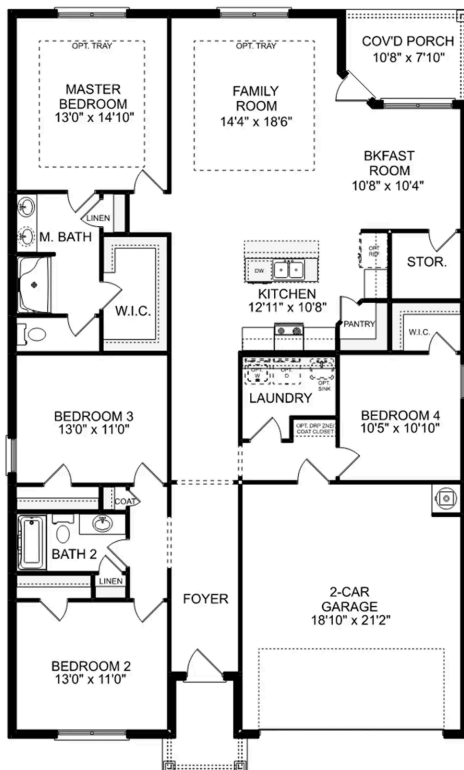


**BEDS**  
**4**

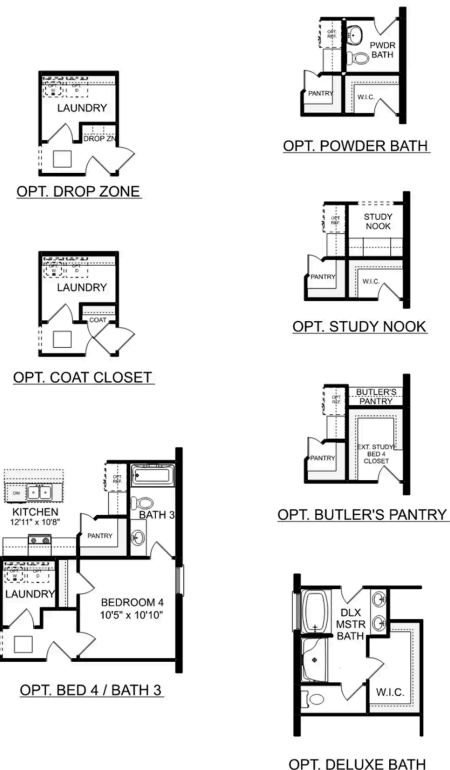
**BATHS**  
**2**

**SQ FT**  
**1,964**

**PARKING**  
**2**



**THE DAPHNE**



**THE DAPHNE OPTIONS**



Hollon Meadow in Decatur, AL

Call (256) 330-6682  
DAVIDSONHOMES.COM

## The Everett

### Exterior Options

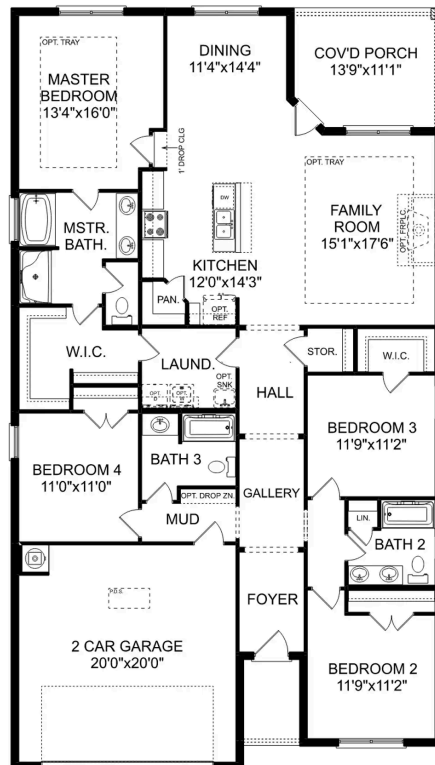


BEDS  
**4**

BATHS  
**3**

SQ FT  
**2,136**

PARKING  
**2**



THE EVERETT







## The Shelby A

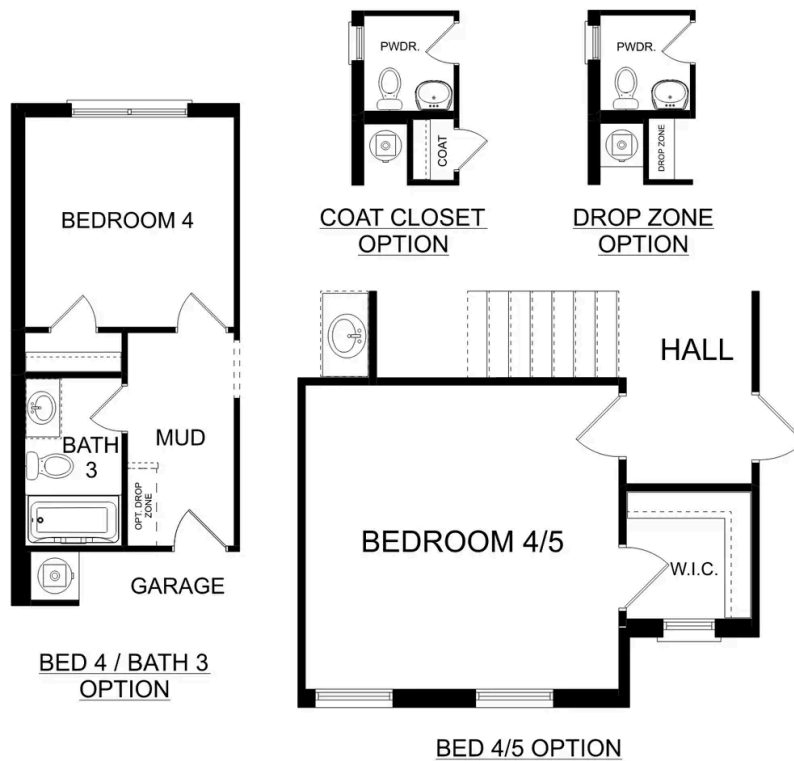
The Shelby welcomes you into a modern, open space, complete with a formal dining room and study. The kitchen overlooks an open-concept family room. The second floor features a spacious master bedroom with a large walk-in closet and master bath along with two additional bedrooms with ample walk-in closets of their own.

BEDS  
**3**

BATHS  
**2.5**

SQ FT  
**2,452**

GARAGE  
**2**



**PLAN OPTIONS**





## Hollon Meadow in Decatur, AL

Call (256) 330-6682  
DAVIDSONHOMES.COM

# The Chelsea A



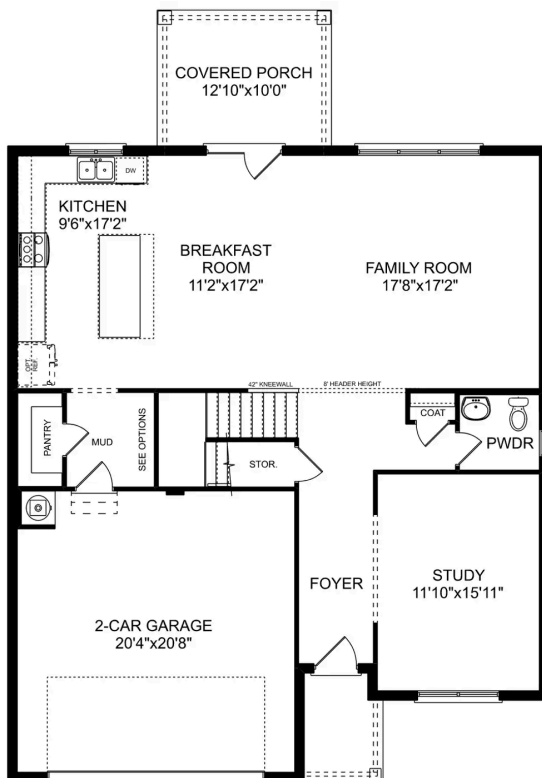
## BEDS

## BATHS

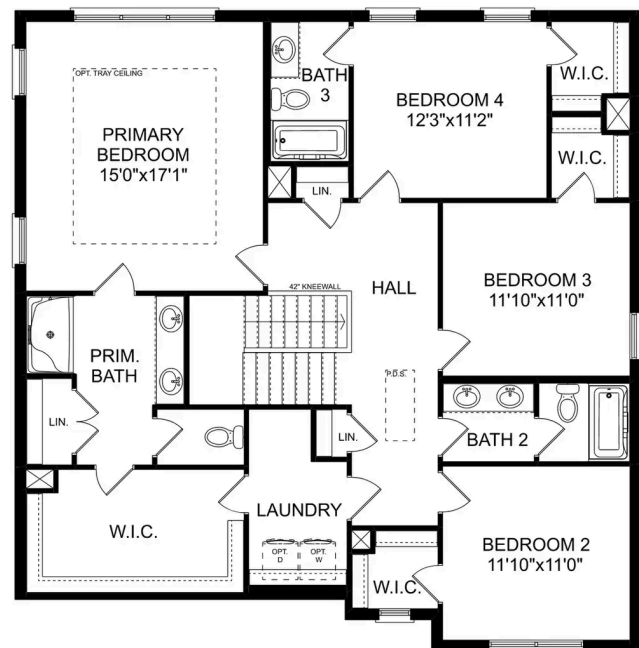
### 3.5

SQ FT  
**2,769**

## PARKING



## MAIN FLOOR



## UPPER FLOOR



## The Chelsea A

The Chelsea's windows fill the open floor plan with natural light, welcoming you into this charming home. The kitchen showcases ample counterspace, overlooking the breakfast and family room. A large study on the first floor offers potential, and the home's second floor features four bedrooms, each with plenty of closet space. The master bedroom is separate from the other bedrooms for added privacy, and the fourth bedroom features its own private bath.

Make it your own with The Chelsea's flexible floor plan. Offerings vary by location, so please discuss your options with your community's agent.

BEDS  
**4**

BATHS  
**3.5**

SQ FT  
**2,769**

GARAGE  
**2**

