

The Reserve at North Ridge

Davidson Homes in Cullman, AL

Discover the beauty of Cullman, Alabama and the exceptional new homes available at The Reserve at North Ridge. At Davidson Homes, we're passionate about bringing high-quality homes to families who value both comfort and style.

Nestled between Huntsville and Birmingham, Cullman is a charming city with a unique blend of small-town charm and big-city amenities. With its proximity to Smith Lake, it's the perfect place for families who love to spend their weekends fishing and enjoying water activities.

Features

Great Public Schools

Local Schools

Cullman City School District
Cullman City Primary
East Elementary
Cullman Middle
Cullman High

Utilities

Electric: Cullman Electric Co...
Gas: Jefferson County Gas
Water: Cullman Electric Co...



Community Address

2175 McAfee Rd. NE

New Homes

06

Floor Plans

13

Homes from the

\$230s

Copyright 2024 Davidson Homes, Inc. | All Rights Reserved | Davidson Homes is a leading builder of quality new homes across the Southeast. Davidson Homes reserves the right to adjust items listed without prior notice or obligation. Such items may include, but are not limited to, options, included features and community information, pricing, amenities, square footage, terms or availability. Features, options, floor plans, elevations, colors, dimensions and photographs are for illustration purposes and may vary from homes built. Please see your community specialist for details. Equal housing lender. Last Updated 05/20/2024.





The Reserve at North Ridge in Cullman, AL

Quick Move-In Homes

Sonya Green
Call (256) 269-0515



UPDATED
05/20/2024

HOMES
06

COMMUNITY ADDRESS
2175 McAfee Rd. NE



\$292,230
3 Beds 2 Baths 1,620 Sq Ft
2151 Dawson Lane NE | #48
The Franklin C Plan



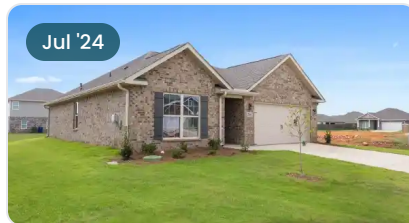
\$359,920
4 Beds 2.5 Baths 2,505 Sq Ft
2158 Dawson Lane NE | #55
The Charleston D Plan



\$314,087
4 Beds 3 Baths 1,964 Sq Ft
2149 Dawson Lane NE | #40
The Daphne C Plan



\$281,604
3 Beds 2 Baths 1,620 Sq Ft
2144 Dawson Lane NE | #21
The Franklin C Plan



\$268,421
3 Beds 2 Baths 1,484 Sq Ft
2146 Dawson Lane NE | #20
The Asheville C Plan



\$271,875
3 Beds 2 Baths 1,620 Sq Ft
2147 Dawson Lane NE | #39
The Franklin C Plan





The Reserve at North Ridge in Cullman, AL

Community Homesite Map

Sonya Green
Call (256) 269-0515



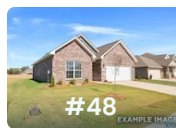
THE RESERVE AT NORTH RIDGE

Cullman, Alabama

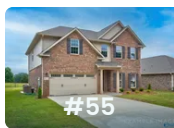


QUICK MOVE-IN COMING SOON AVAILABLE SOLD

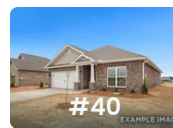
Featured Homes for Sale



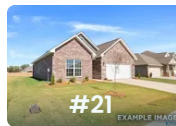
The Franklin C
2151 Dawson Lane NE
\$292,230



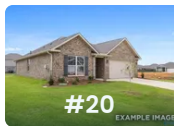
The Charleston D
2158 Dawson Lane NE
\$359,920



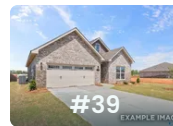
The Daphne C
2149 Dawson Lane NE
\$314,087



The Franklin C
2144 Dawson Lane NE
\$281,604



The Asheville C
2146 Dawson Lane NE
\$268,421



The Franklin C
2147 Dawson Lane NE
\$271,875





The Reserve at North Ridge in Cullman, AL

Call (256) 269-0515
DAVIDSONHOMES.COM

The Butler V Brick



Description

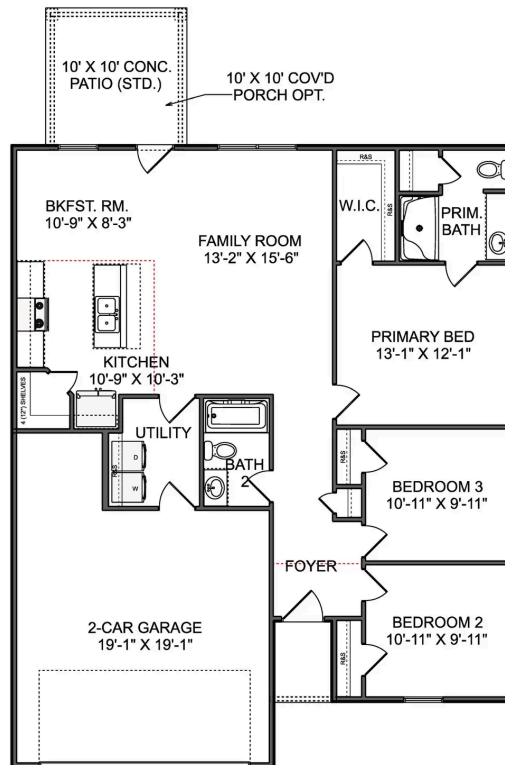
"The Butler" is a gracefully designed 1,299 square foot floor plan, blending comfort with efficiency. Its open floor plan unites the living, dining, and kitchen areas, creating an inviting space ideal for family life and entertaining.

BEDS
3

BATHS
2

SQ FT
1,299

PARKING
2



THE BUTLER V BRICK MAIN FLOOR





The Reserve at North Ridge in Cullman, AL

Call (256) 269-0515
DAVIDSONHOMES.COM

The Asheville V Brick



Description

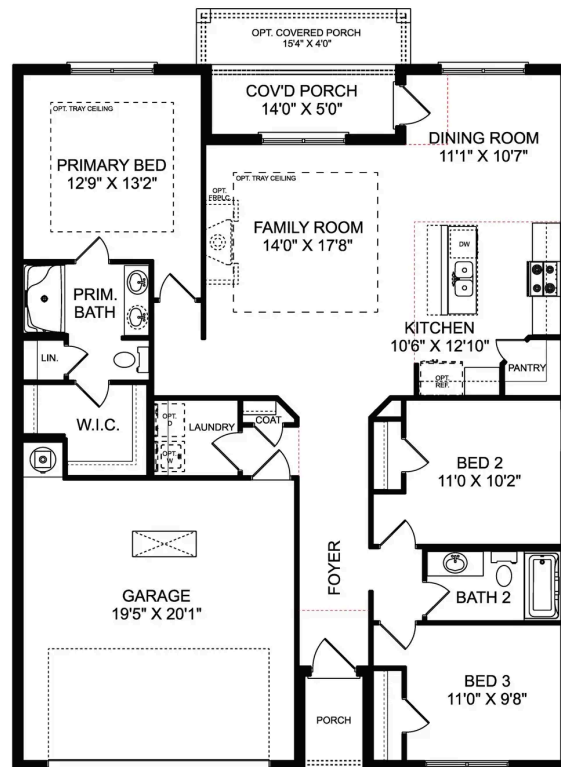
Discover the charm of one-level living with this open-concept home! From The Asheville's large, kitchen island overlooking the family room to its isolated Master Bedroom, we've designed this home with you in mind. The three bedrooms offer plenty of space for you and your guests.

BEDS
3

BATHS
2

SQ FT
1,484

PARKING
2



THE ASHEVILLE V BRICK



The Asheville

Exterior Options

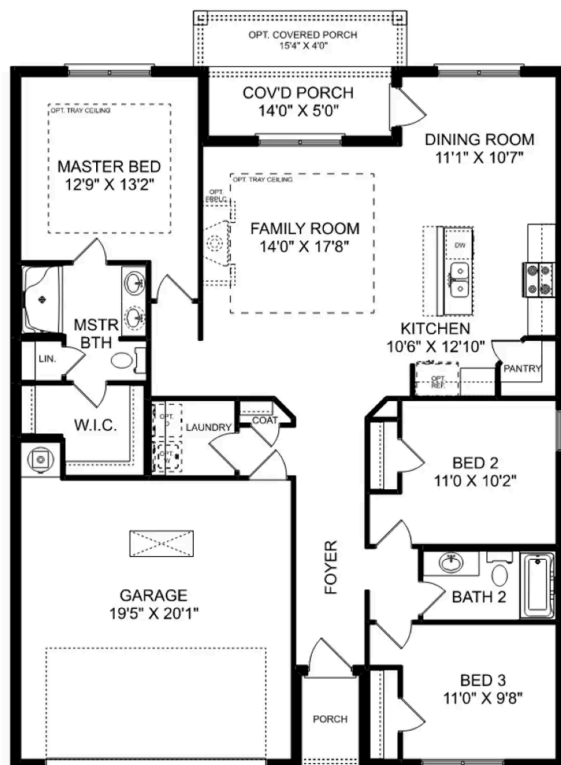


BEDS
3

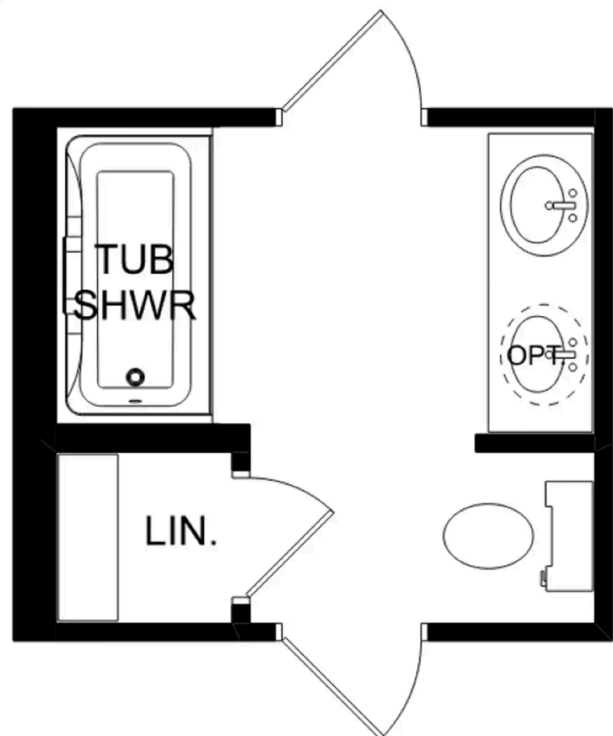
BATHS
2

SQ FT
1,484

PARKING
2



THE ASHEVILLE



THE ASHEVILLE OPTIONS

The Franklin V Brick



Description

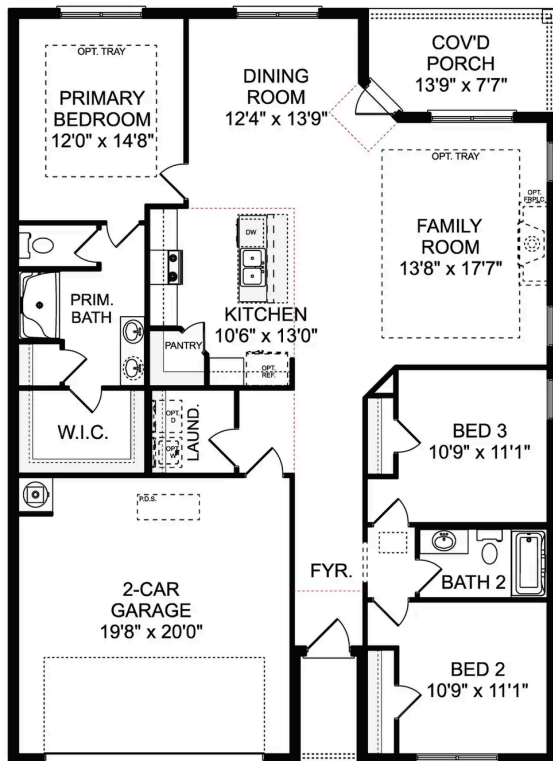
Within this cozy, one-level home lies a modern use of space. From the kitchen's large island to the family room's spacious open-concept, you're surrounded by owner-centric design.

BEDS
3

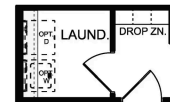
BATHS
2

SQ FT
1,620

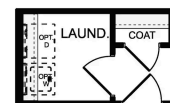
PARKING
2



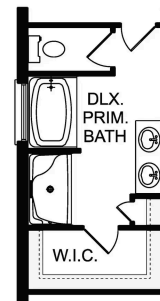
THE FRANKLIN V BRICK



OPT. DROP ZONE



OPT. COAT CLOSET



OPT. DELUXE PRIMARY BATH

THE FRANKLIN V BRICK OPTIONS

The Franklin

Exterior Options

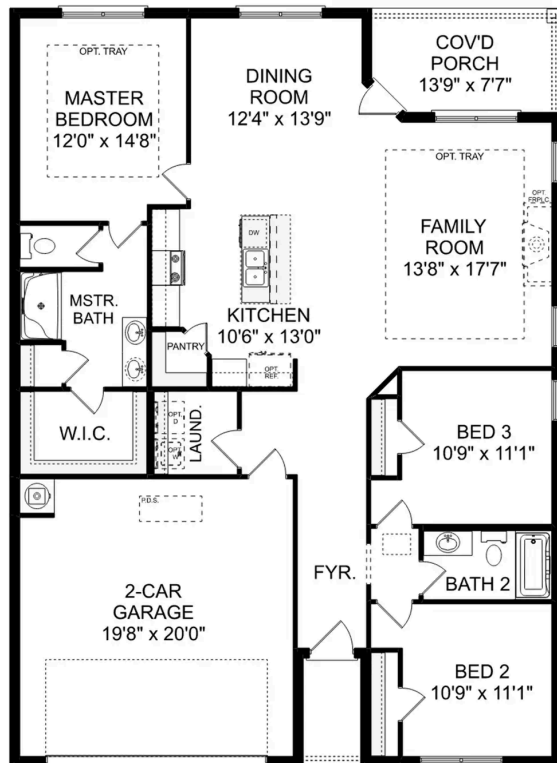


BEDS
3

BATHS
2

SQ FT
1,620

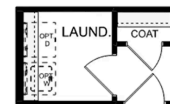
PARKING
2



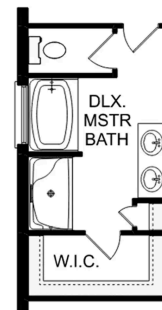
THE FRANKLIN



OPT. DROP ZONE



OPT. COAT CLOSET



OPT. DELUXE MASTER BATH

THE FRANKLIN OPTIONS

The Daphne V Brick



Description

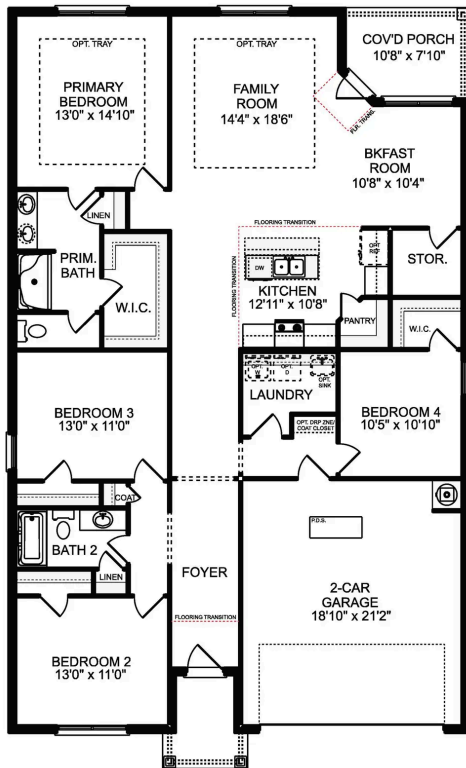
Show off your style with the Daphne's open-concept floor plan! Featuring tons of natural light, the family room is perfect for entertaining, and the home's kitchen features an adorable breakfast nook. The Master Suite offers plenty of space, and its walk-in closet has room to spare.

BEDS
4

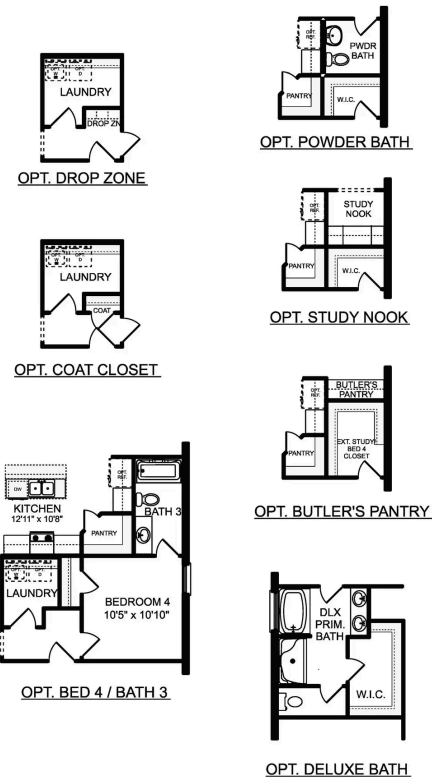
BATHS
2

SQ FT
1,964

PARKING
2



THE DAPHNE V BRICK



THE DAPHNE V BRICK OPTIONS

The Daphne

Exterior Options

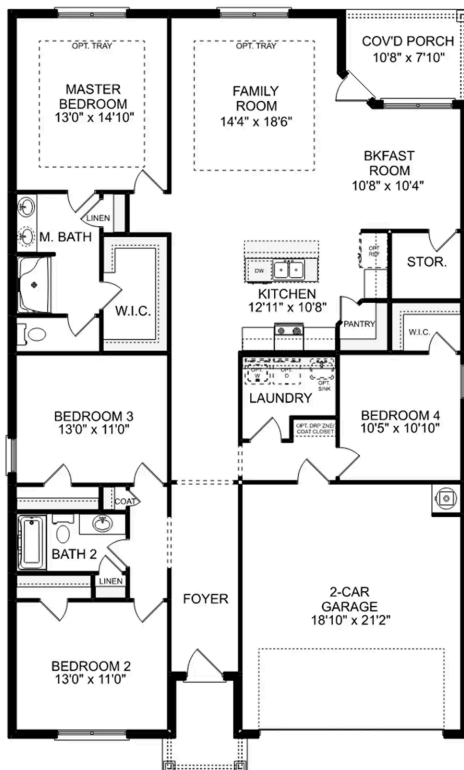


BEDS
4

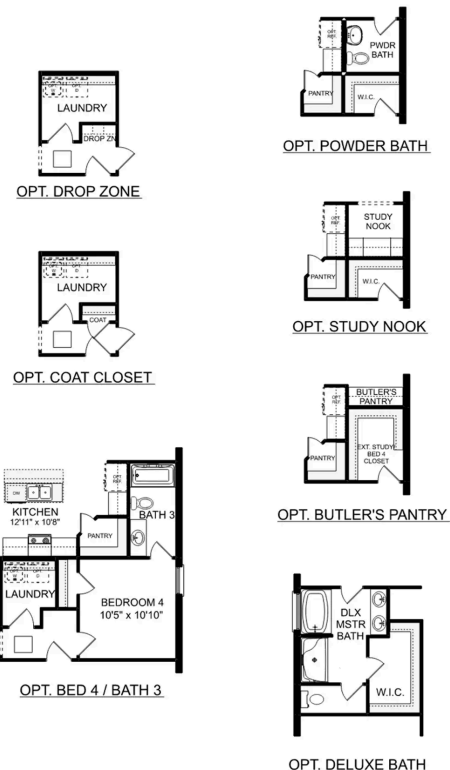
BATHS
2

SQ FT
1,964

PARKING
2



THE DAPHNE



THE DAPHNE OPTIONS



The Reserve at North Ridge in Cullman, AL

Call (256) 269-0515
DAVIDSONHOMES.COM

The Everett V Brick



Description

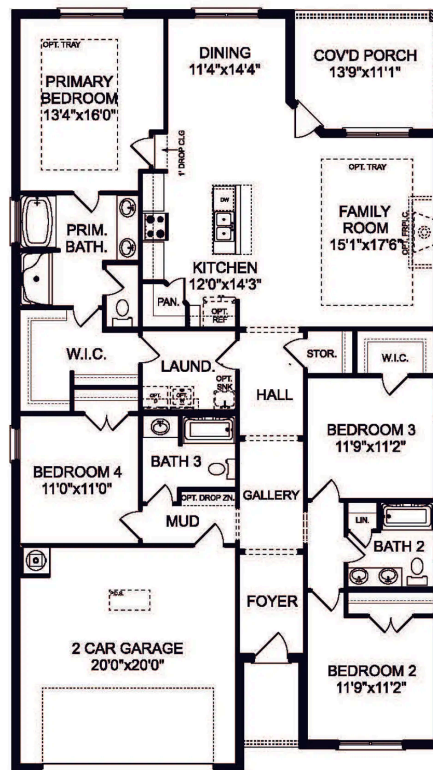
Featuring plenty of natural light, The Everett's open-concept family room and kitchen are perfect for entertaining. The Master Suite offers plenty of space, and its walk-in closet has room to spare – leading into the laundry room for your convenience.

BEDS
4

BATHS
3

SQ FT
2,136

PARKING
2



THE EVERETT V BRICK





The Reserve at North Ridge in Cullman, AL

Call (256) 269-0515
DAVIDSONHOMES.COM

The Everett

Exterior Options

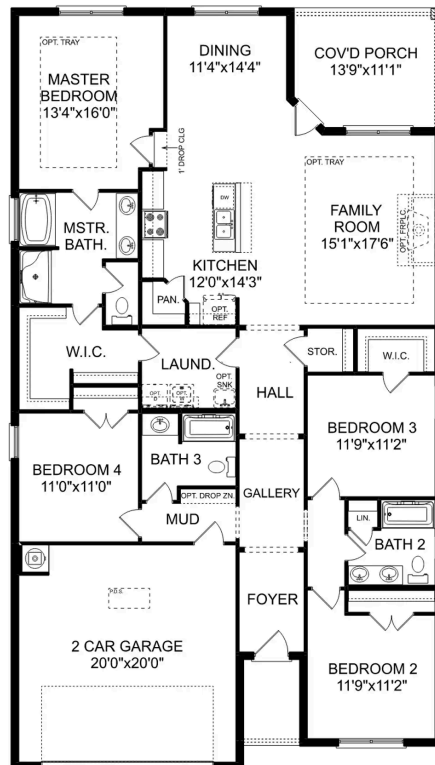


BEDS
4

BATHS
3

SQ FT
2,136

PARKING
2



THE EVERETT



The Shelby A

Exterior Options

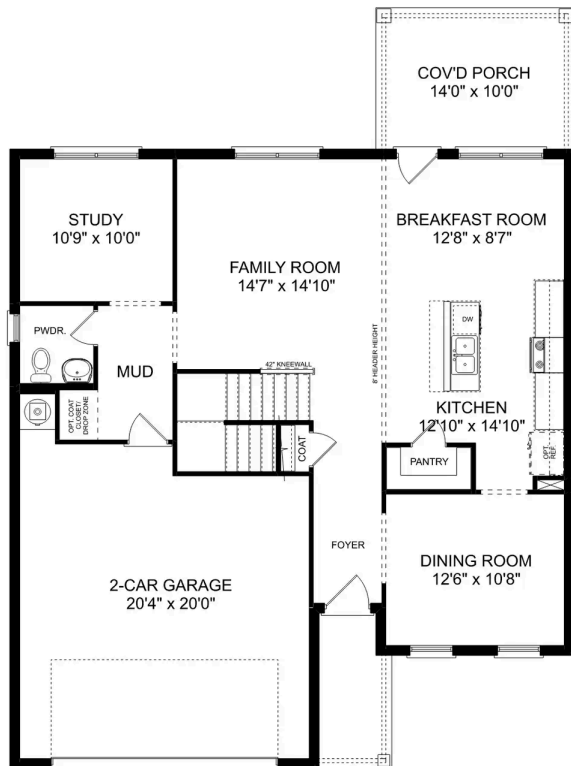


BEDS
3

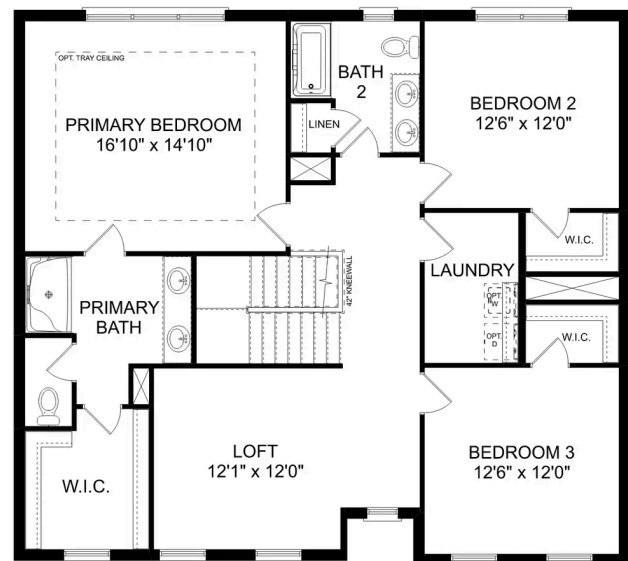
BATHS
2.5

SQ FT
2,452

PARKING
2



MAIN FLOOR



UPPER FLOOR

The Shelby A

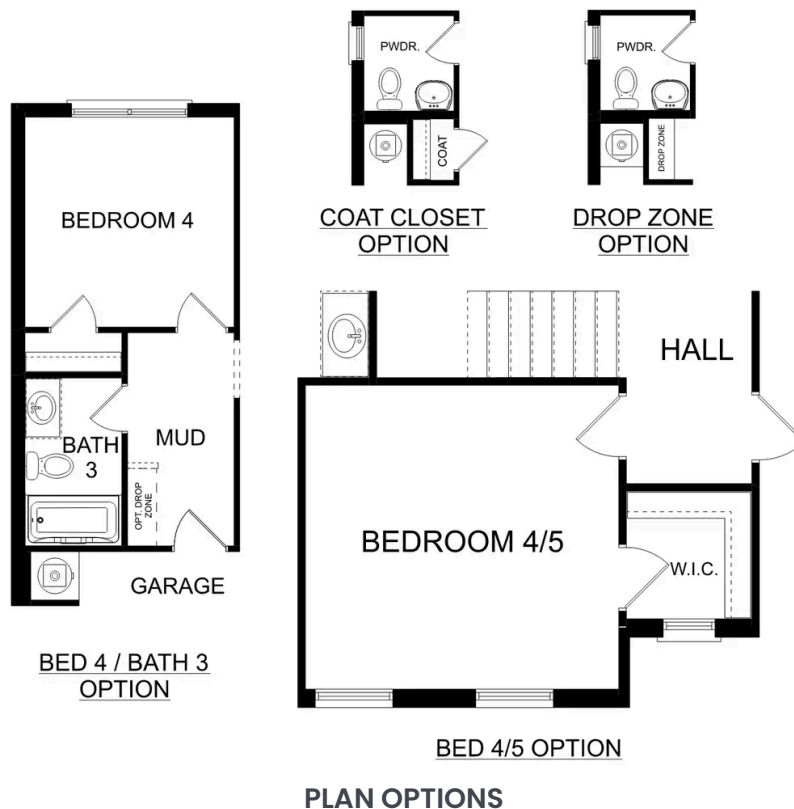
The Shelby welcomes you into a modern, open space, complete with a formal dining room and study. The kitchen overlooks an open-concept family room. The second floor features a spacious master bedroom with a large walk-in closet and master bath along with two additional bedrooms with ample walk-in closets of their own.

BEDS
3

BATHS
2.5

SQ FT
2,452

GARAGE
2



The Chelsea A

Exterior Options

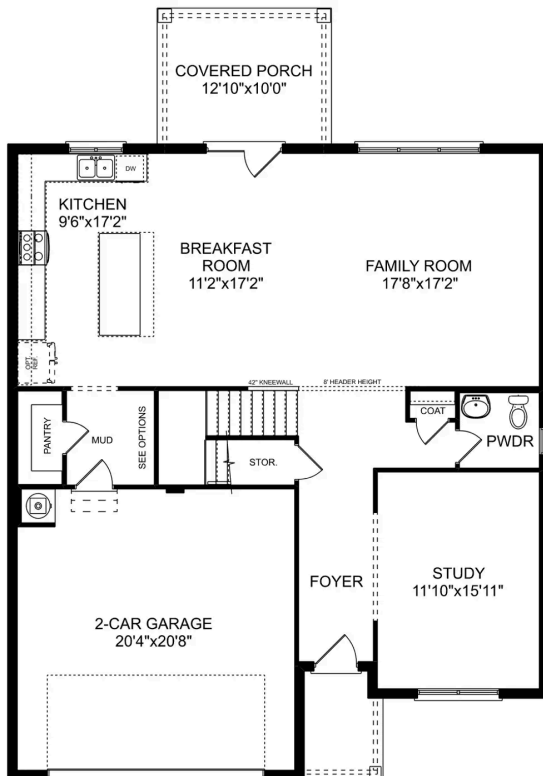


BEDS
4

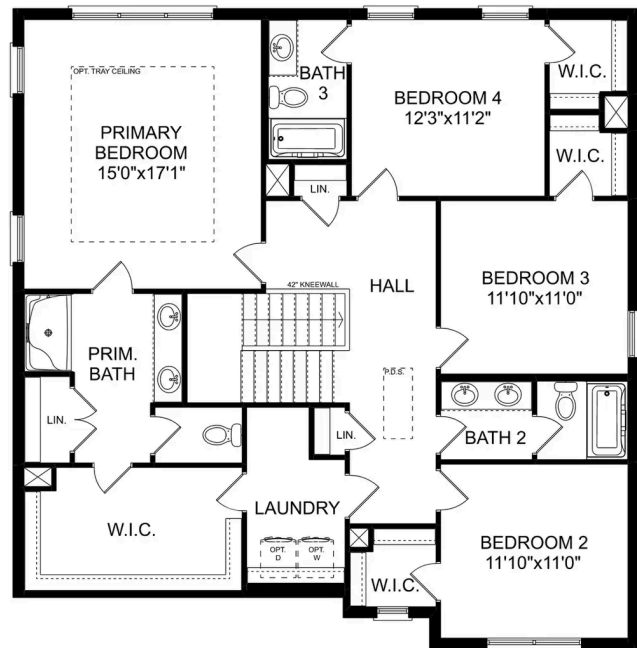
BATHS
3.5

SQ FT
2,769

PARKING
2



MAIN FLOOR



UPPER FLOOR

The Chelsea A

The Chelsea's windows fill the open floor plan with natural light, welcoming you into this charming home. The kitchen showcases ample counterspace, overlooking the breakfast and family room. A large study on the first floor offers potential, and the home's second floor features four bedrooms, each with plenty of closet space. The master bedroom is separate from the other bedrooms for added privacy, and the fourth bedroom features its own private bath.

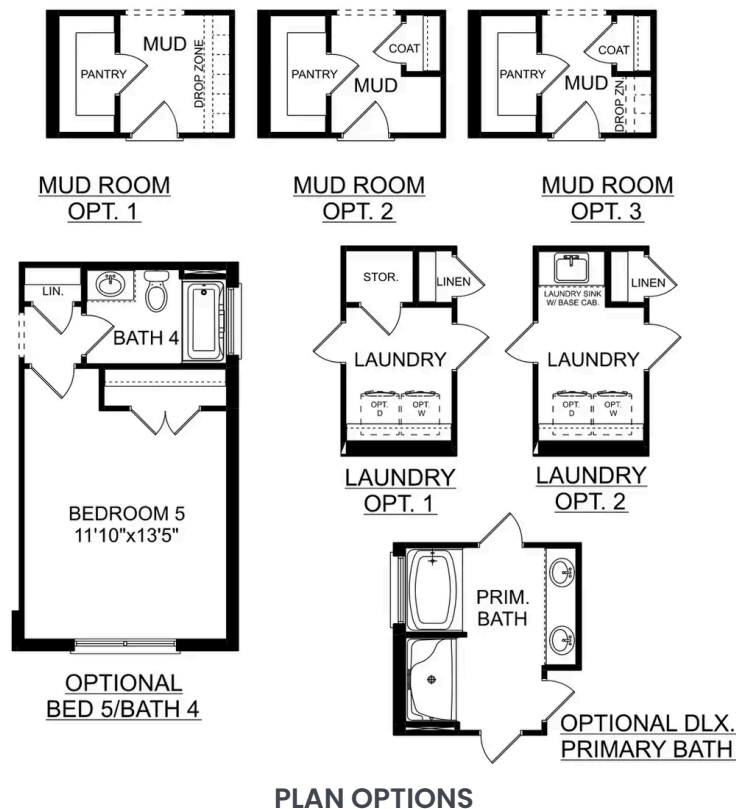
Make it your own with The Chelsea's flexible floor plan. Offerings vary by location, so please discuss your options with your community's agent.

BEDS
4

BATHS
3.5

SQ FT
2,769

GARAGE
2



The Charleston D



Description

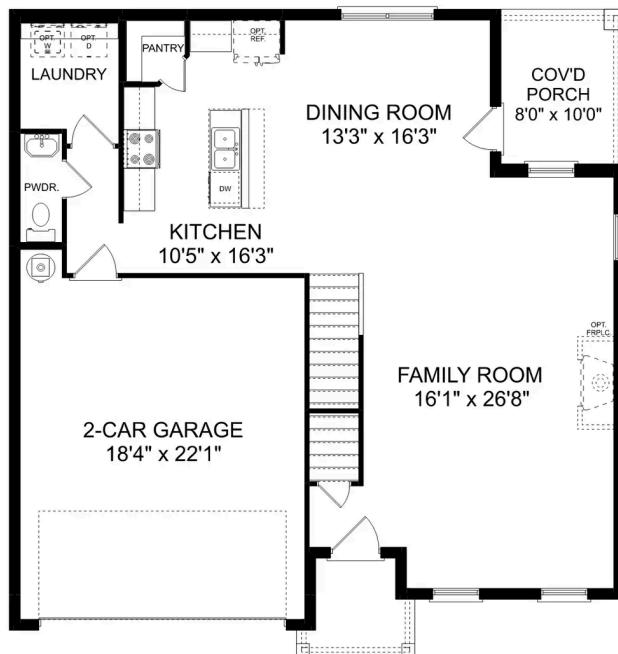
The sky's the limit with The Charleston's two-story layout and massive bonus room. Inside the home's brick exterior, the open-concept kitchen overlooks the huge family room. The Master Suite offers you a personal retreat – complete with large walk-in closet.

BEDS
4

BATHS
2.5

SQ FT
2,505

PARKING
2



The Charleston D

The sky's the limit with The Charleston's two-story layout and massive bonus room. Inside the home's brick exterior, the open-concept kitchen overlooks the huge family room. The Master Suite offers you a personal retreat – complete with large walk-in closet. Whether you're looking for a game room or a fifth bedroom, the upstairs bonus room gives you all the flexibility you need. Make it your own with The Charleston's flexible floor plan! Just know that offerings vary by location, so please discuss our standard features and upgrade options with your community's agent.

BEDS
4

BATHS
2.5

SQ FT
2,505

GARAGE
2



THE CHARLESTON D OPTIONS

The Richmond D



Description

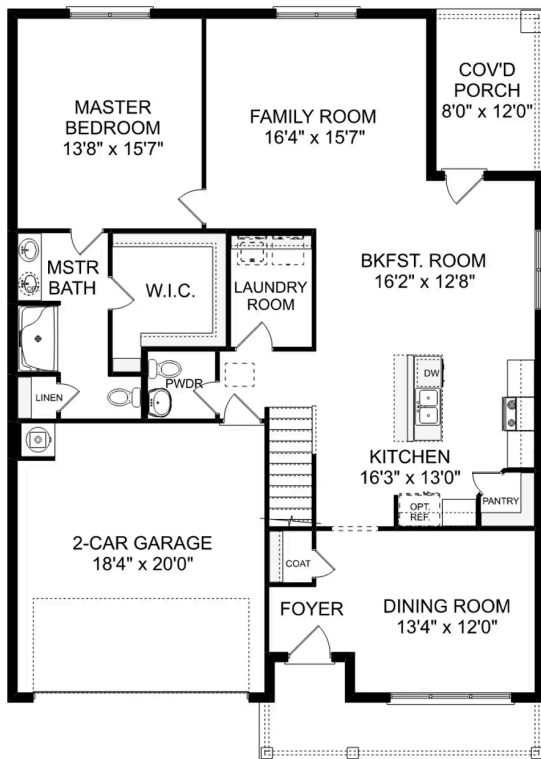
Starring five bedrooms and plenty of space, The Richmond features a sprawling layout! Enter the foyer and discover the elegant dining room to the left. The home quickly expands into an open-concept living space, as the charming kitchen overlooks the breakfast nook and family room.

BEDS
5

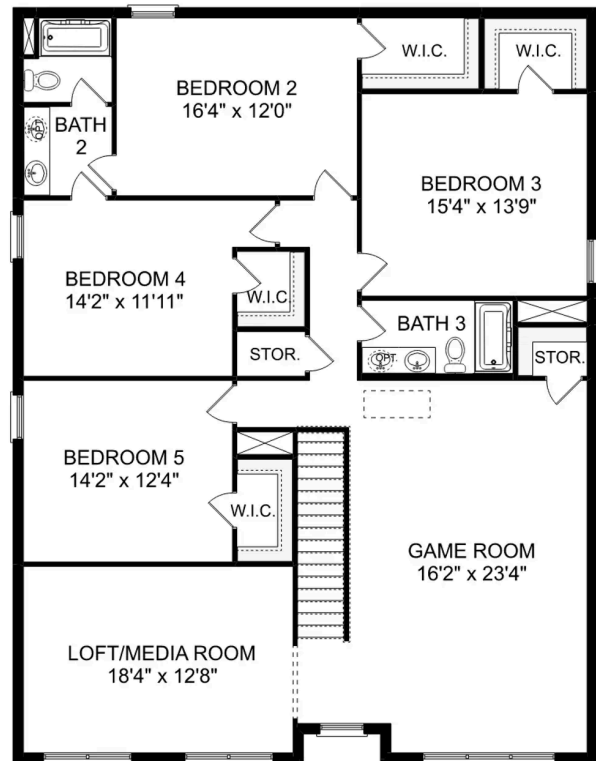
BATHS
3.5

SQ FT
3,537

PARKING
2



THE RICHMOND D MAIN FLOOR



THE RICHMOND D UPPER FLOOR

The Richmond D

Starring five bedrooms and plenty of space, The Richmond features a sprawling layout! Enter the foyer and discover the elegant dining room to the left. The home quickly expands into an open-concept living space, as the charming kitchen overlooks the breakfast nook and family room. Continue through to the Master Suite, featuring a huge walk-in closet.

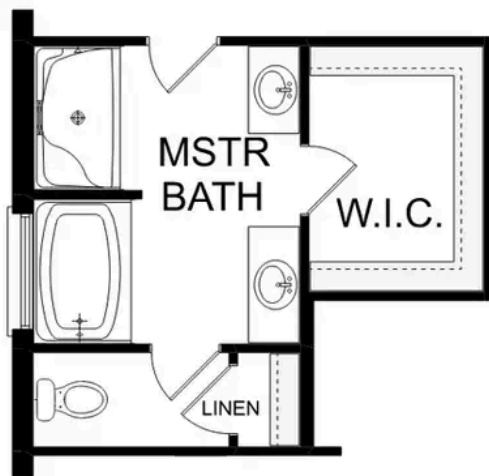
Upstairs, the plan features four more bedrooms, in addition to a game room and media room. Whether you're looking for a home theater or a home gym, The Richmond offers all the space you need.

BEDS
5

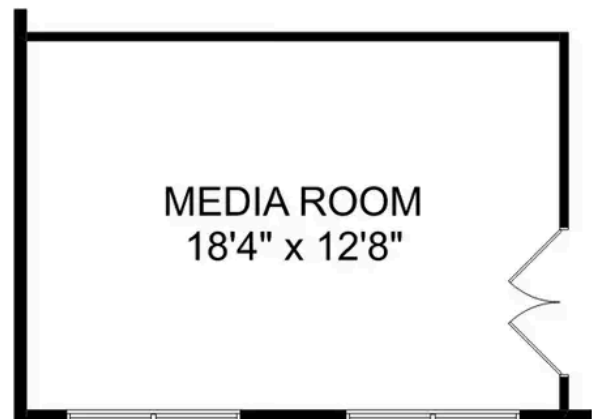
BATHS
3.5

SQ FT
3,537

GARAGE
2



OPTIONAL DELUXE
MASTER BATH



OPTIONAL
MEDIA ROOM

THE RICHMOND D OPTIONS