

Spragins Cove

Davidson Homes in Huntsville, AL

Now Selling! Welcome to Spragins Cove, the vibrant new community by Davidson Homes in North Huntsville! Spragins Cove offers a truly exceptional living experience in a picturesque setting, with convenient access to Memorial Parkway for easy commuting and daily convenience.

Features

Nearby Parks & Recreation

Local Schools

Huntsville City Schools
Rolling Hills Elementary
Ronald E. McNair Junior Hi...
Jemison High

Utilities

Electric: Huntsville Utilities
Water: Huntsville Utilities



Community Address

Spragins Hollow Rd. NW

New Homes

04

Floor Plans

07

Homes from the

\$260s

Copyright 2024 Davidson Homes, Inc. | All Rights Reserved | Davidson Homes is a leading builder of quality new homes across the Southeast. Davidson Homes reserves the right to adjust items listed without prior notice or obligation. Such items may include, but are not limited to, options, included features and community information, pricing, amenities, square footage, terms or availability. Features, options, floor plans, elevations, colors, dimensions and photographs are for illustration purposes and may vary from homes built. Please see your community specialist for details. Equal housing lender. Last Updated 05/20/2024.





Spragins Cove in Huntsville, AL

Quick Move-In Homes

Terrence Harris
Call (256) 669-3525



LIMITED TIME

Save **25%** on
Design Upgrades!

PLUS, ENJOY
\$5,000*
TO USE AS YOU CHOOSE!

LEARN MORE →

*See link for terms/conditions.

UPDATED
05/20/2024

HOMES
04

COMMUNITY ADDRESS
Spragins Hollow Rd. NW

Coming Soon



\$287,770

3 Beds 2 Baths 1,484 Sq Ft

6256 Pisgah Drive | #27

The Asheville C Plan

Coming Soon



\$299,439

3 Beds 2 Baths 1,620 Sq Ft

6254 Pisgah Drive | #26

The Franklin C Plan

Coming Soon



\$337,976

4 Beds 3 Baths 2,136 Sq Ft

6252 Pisgah Drive | #25

The Everett Plan

Sep '24



\$314,369

4 Beds 2 Baths 1,964 Sq Ft

6250 Pisgah Drive | #24

The Daphne C Plan

Copyright 2024 Davidson Homes, Inc. | All Rights Reserved | Davidson Homes is a leading builder of quality new homes across the Southeast. Davidson Homes reserves the right to adjust items listed without prior notice or obligation. Such items may include, but are not limited to, options, included features and community information, pricing, amenities, square footage, terms or availability. Features, options, floor plans, elevations, colors, dimensions and photographs are for illustration purposes and may vary from homes built. Please see your community specialist for details. Equal housing lender.





Spragins Cove in Huntsville, AL

Community Homesite Map

Terrence Harris
Call (256) 669-3525

SPRAGINS COVE

Huntsville, Alabama



QUICK MOVE-IN

COMING SOON

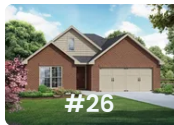
AVAILABLE

SOLD

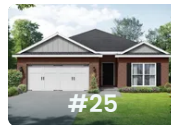
Featured Homes for Sale



The Asheville C
6256 Pisgah Drive
\$287,770



The Franklin C
6254 Pisgah Drive
\$299,439



The Everett
6252 Pisgah Drive
\$337,976



The Daphne C
6250 Pisgah Drive
\$314,369





Spragins Cove in Huntsville, AL

Call (256) 669-3525
DAVIDSONHOMES.COM

The Butler



Description

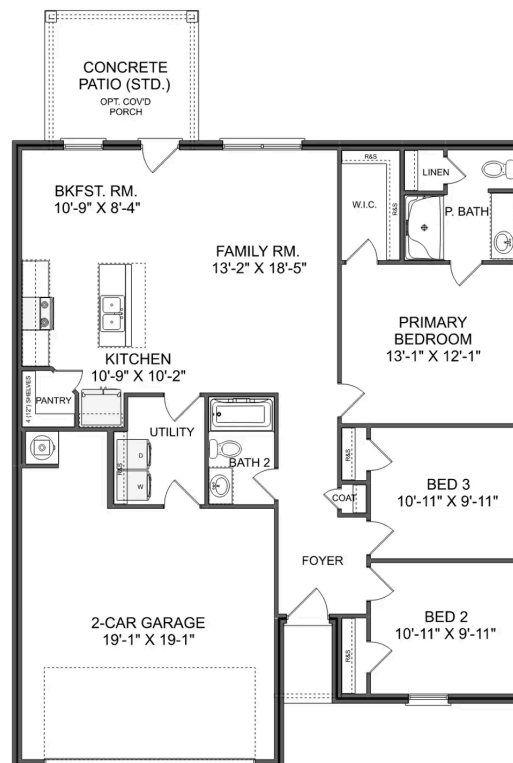
"The Butler" is a gracefully designed 1,299 square foot floor plan, blending comfort with efficiency. Its open floor plan unites the living, dining, and kitchen areas, creating an inviting space ideal for family life and entertaining.

BEDS
3

BATHS
2

SQ FT
1,299

PARKING
2



THE BUTLER A MAIN FLOOR



The Asheville

Exterior Options

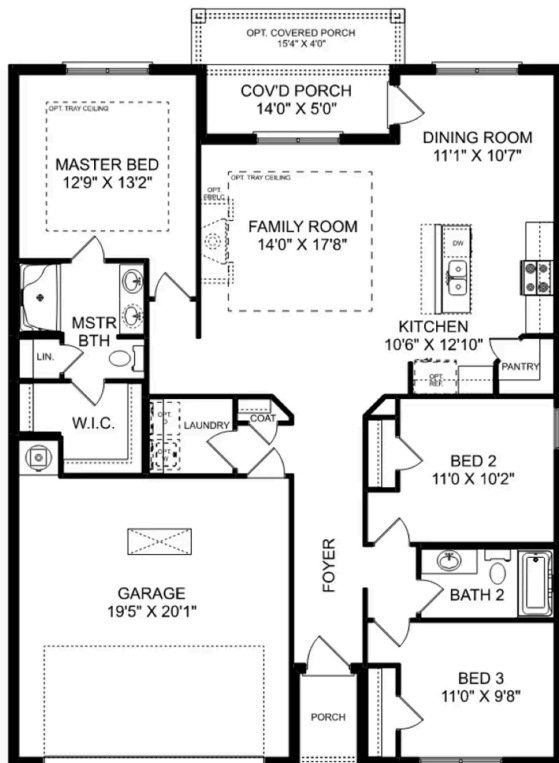


BEDS
3

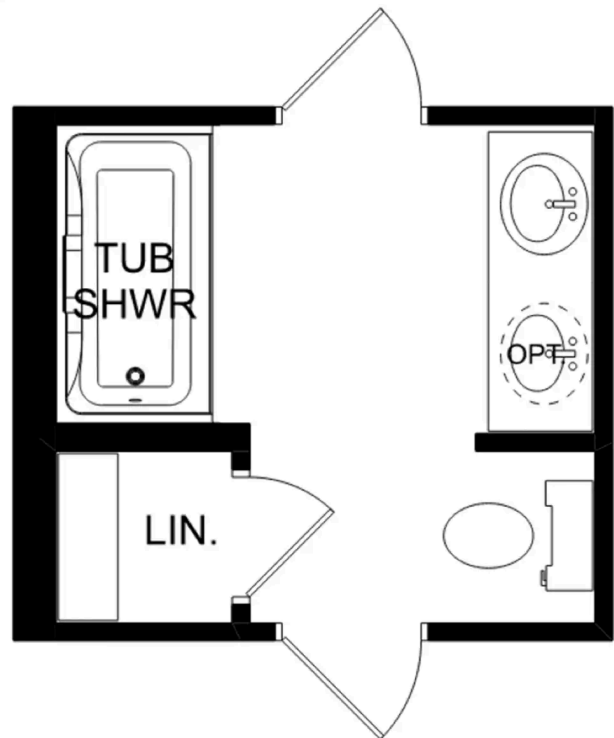
BATHS
2

SQ FT
1,484

PARKING
2



THE ASHEVILLE



THE ASHEVILLE OPTIONS

The Franklin



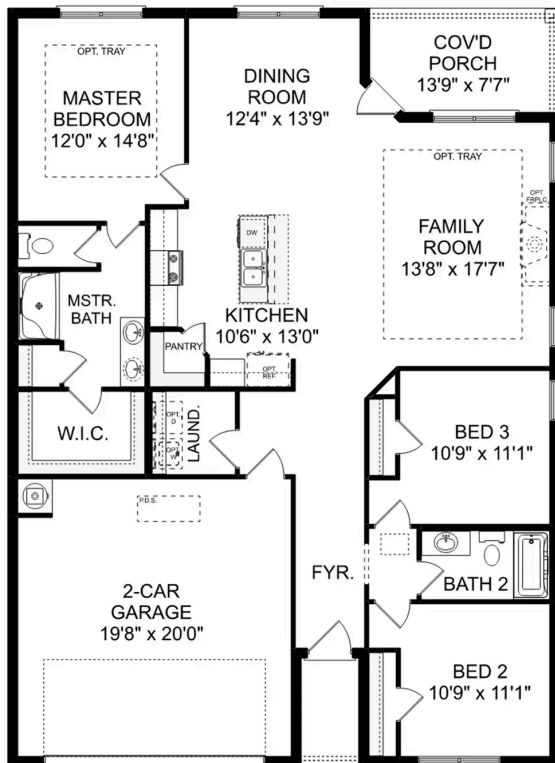
BEDS
3

BATHS
2

SQ FT
1,620

PARKING
2

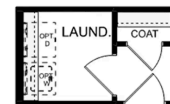
Exterior Options



THE FRANKLIN



OPT. DROP ZONE



OPT. COAT CLOSET



OPT. DELUXE MASTER BATH

THE FRANKLIN OPTIONS

The Daphne

Exterior Options

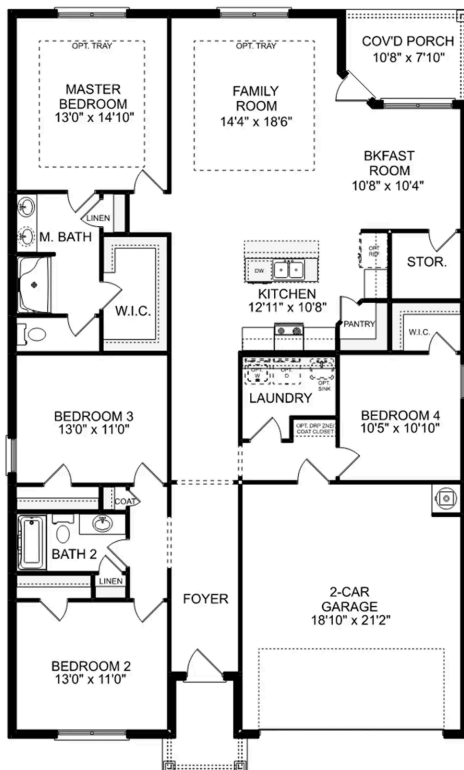


BEDS
4

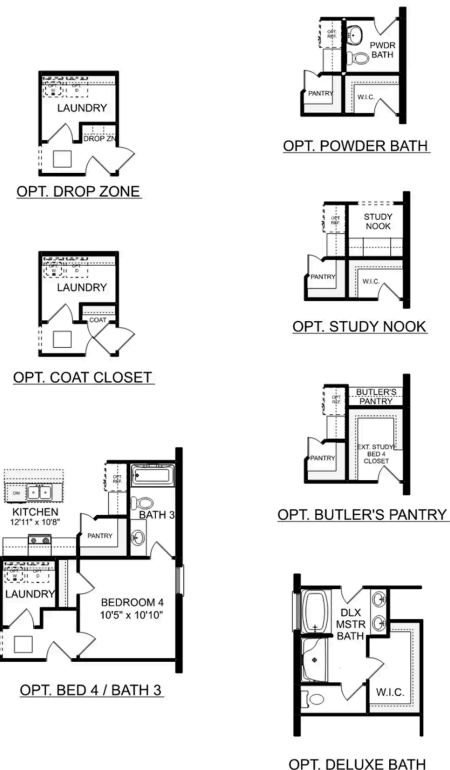
BATHS
2

SQ FT
1,964

PARKING
2



THE DAPHNE



THE DAPHNE OPTIONS



Spragins Cove in Huntsville, AL

Call (256) 669-3525
DAVIDSONHOMES.COM

The Everett

Exterior Options

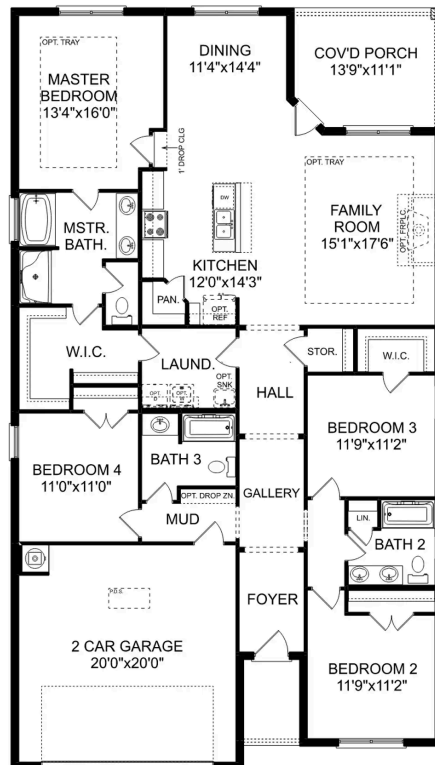


BEDS
4

BATHS
3

SQ FT
2,136

PARKING
2



THE EVERETT





Spragins Cove in Huntsville, AL

Call (256) 669-3525
DAVIDSONHOMES.COM

The Shelby A

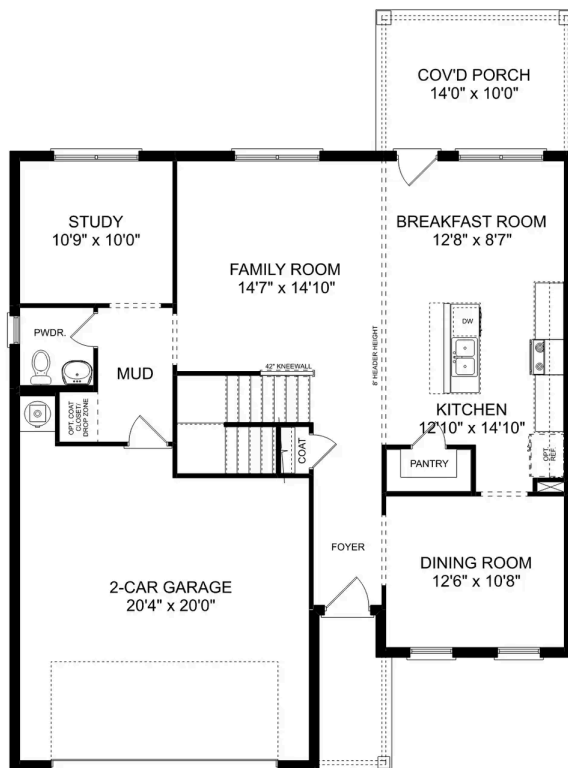


BEDS

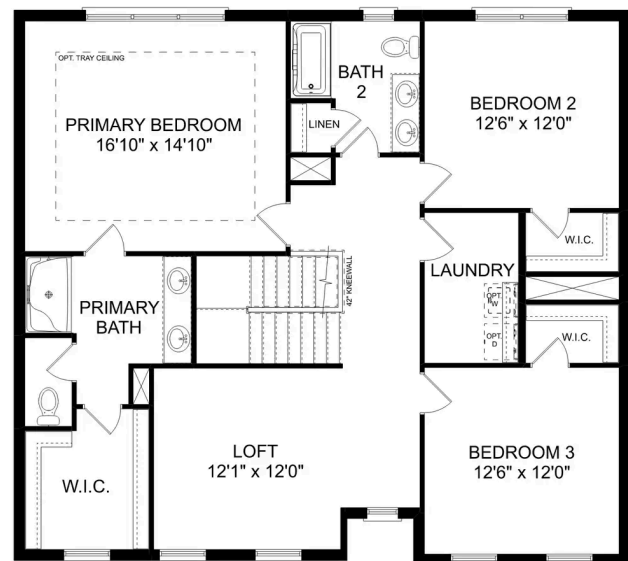
BATHS

SQ FT
2,452

PARKING



MAIN FLOOR



UPPER FLOOR



The Shelby A

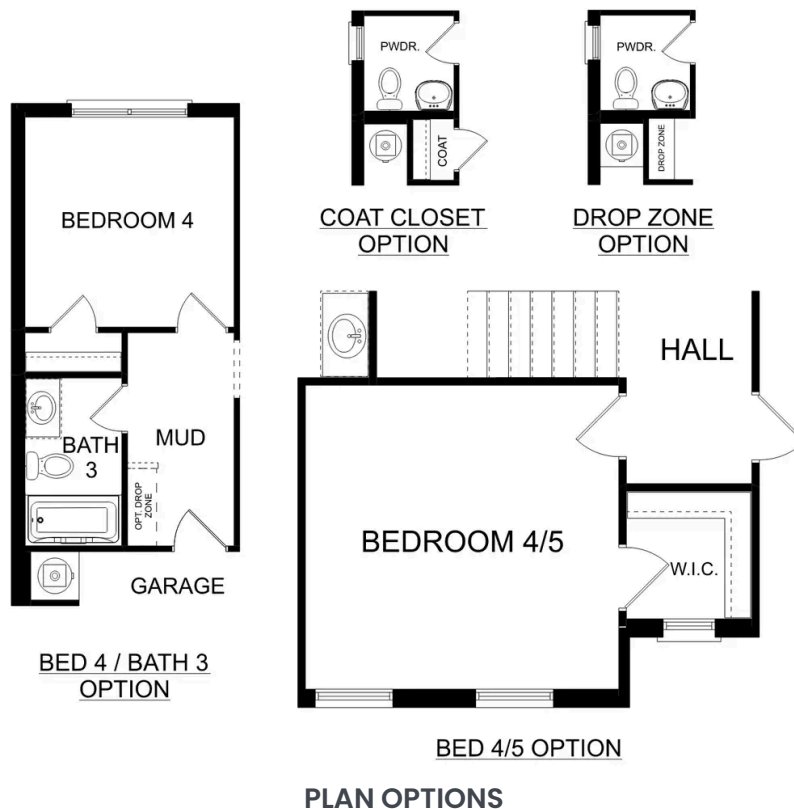
The Shelby welcomes you into a modern, open space, complete with a formal dining room and study. The kitchen overlooks an open-concept family room. The second floor features a spacious master bedroom with a large walk-in closet and master bath along with two additional bedrooms with ample walk-in closets of their own.

BEDS
3

BATHS
2.5

SQ FT
2,452

GARAGE
2



The Chelsea A

Exterior Options

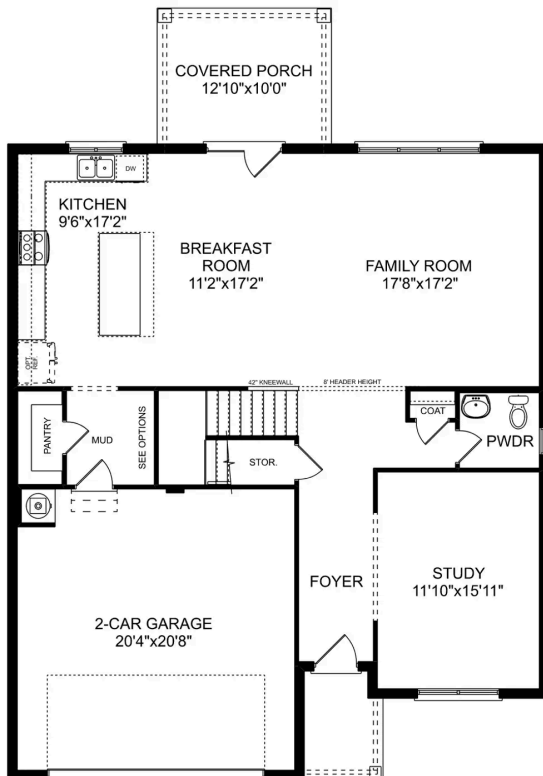


BEDS
4

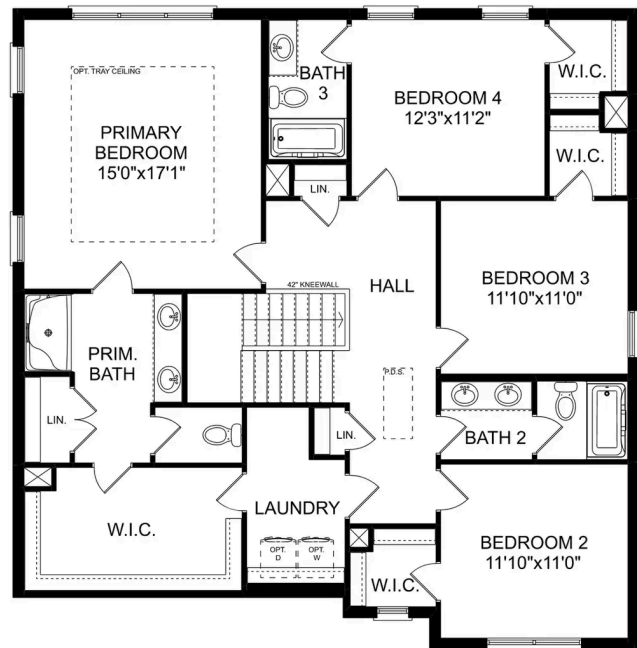
BATHS
3.5

SQ FT
2,769

PARKING
2



MAIN FLOOR



UPPER FLOOR

The Chelsea A

The Chelsea's windows fill the open floor plan with natural light, welcoming you into this charming home. The kitchen showcases ample counterspace, overlooking the breakfast and family room. A large study on the first floor offers potential, and the home's second floor features four bedrooms, each with plenty of closet space. The master bedroom is separate from the other bedrooms for added privacy, and the fourth bedroom features its own private bath.

Make it your own with The Chelsea's flexible floor plan. Offerings vary by location, so please discuss your options with your community's agent.

BEDS
4

BATHS
3.5

SQ FT
2,769

GARAGE
2

