

Clearview

Davidson Homes in Hazel Green, AL

Welcome to Clearview, our flourishing gem in Hazel Green, AL, where tranquility meets ultimate convenience. Only 20 minutes from Huntsville, Clearview elegantly blends rural charm with easy access to shopping, dining, and desired schools.

Features

Tile Backsplash
Recessed Lighting

Local Schools

Madison County School Di...
Hazel Green Elementary
Moore's Mill Intermediate
Meridianville Middle
Hazel Green High

Utilities

Electric: Huntsville Utilities
Water: Madison Co Water



Community Address

196 Cherry Laurel Drive

New Homes

05

Floor Plans

09

Homes from the

\$240s

Copyright 2024 Davidson Homes, Inc. | All Rights Reserved | Davidson Homes is a leading builder of quality new homes across the Southeast. Davidson Homes reserves the right to adjust items listed without prior notice or obligation. Such items may include, but are not limited to, options, included features and community information, pricing, amenities, square footage, terms or availability. Features, options, floor plans, elevations, colors, dimensions and photographs are for illustration purposes and may vary from homes built. Please see your community specialist for details. Equal housing lender. Last Updated 05/20/2024.





Clearview in Hazel Green, AL

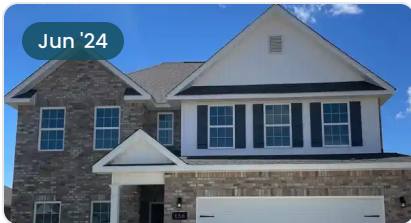
Quick Move-In Homes

UPDATED
05/20/2024

HOMES
05

Kross Jackson
Call (256) 291-1937

COMMUNITY ADDRESS
196 Cherry Laurel Drive



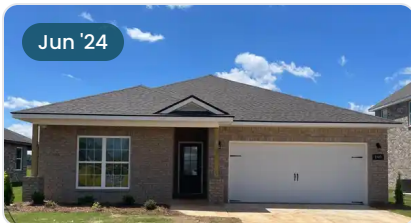
~~\$349,900~~
\$349,900
4 Beds 3 Baths 2,461 Sq Ft
136 Hazel Pine Trail | #150
The Shelby A Plan



~~\$382,486~~ **\$374,900**
4 Beds 3.5 Baths 2,769 Sq Ft
142 Hazel Pine Trail | #147
The Chelsea B Plan



~~\$356,450~~ **\$349,900**
4 Beds 3 Baths 2,461 Sq Ft
125 Hazel Pine Trail | #100
The Shelby C Plan



~~\$271,532~~ **\$264,900**
3 Beds 2 Baths 1,484 Sq Ft
140 Hazel Pine Trail | #148
The Asheville B Plan



~~\$291,543~~ **\$284,900**
3 Beds 2 Baths 1,620 Sq Ft
138 Hazel Pine Trail | #149
The Franklin C Plan

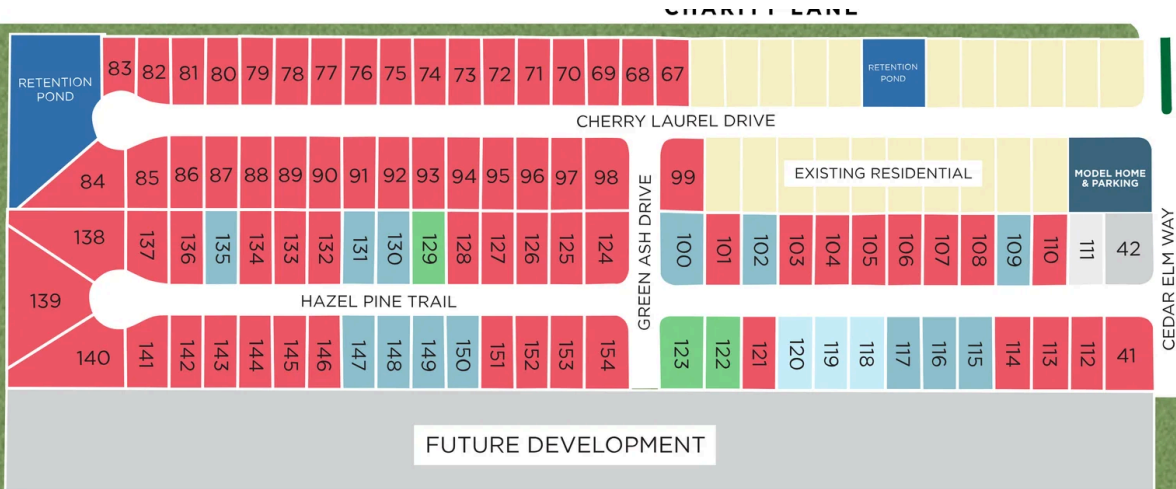




Clearview in Hazel Green, AL

Community Homesite Map

Kross Jackson
Call (256) 291-1937



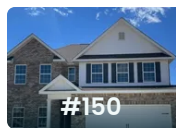
CLEARVIEW

Hazel Green, Alabama

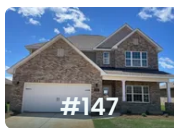


QUICK MOVE-IN COMING SOON AVAILABLE SOLD

Featured Homes for Sale



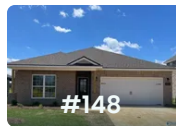
The Shelby A
136 Hazel Pine Trail
\$349,900



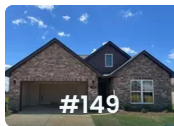
The Chelsea B
142 Hazel Pine Trail
\$374,900



The Shelby C
125 Hazel Pine Trail
\$349,900



The Asheville B
140 Hazel Pine Trail
\$264,900



The Franklin C
138 Hazel Pine Trail
\$284,900





Clearview in Hazel Green, AL

Call (256) 291-1937
DAVIDSONHOMES.COM

The Butler



Description

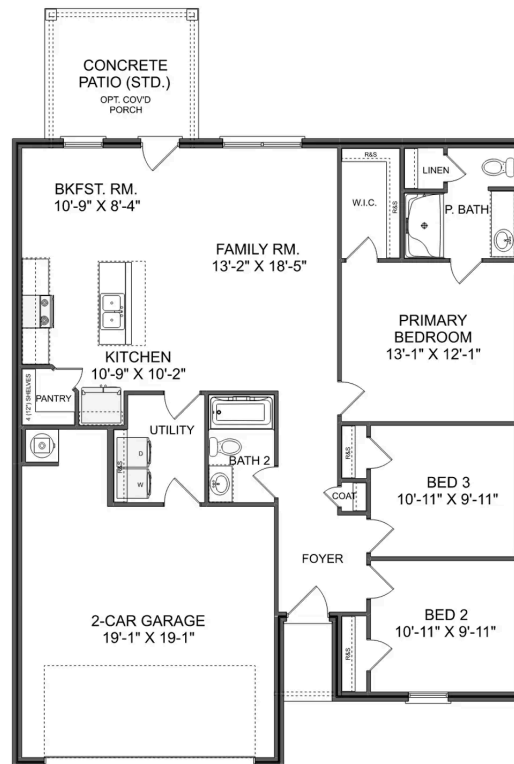
"The Butler" is a gracefully designed 1,299 square foot floor plan, blending comfort with efficiency. Its open floor plan unites the living, dining, and kitchen areas, creating an inviting space ideal for family life and entertaining.

BEDS
3

BATHS
2

SQ FT
1,299

PARKING
2



THE BUTLER A MAIN FLOOR



The Asheville

Exterior Options

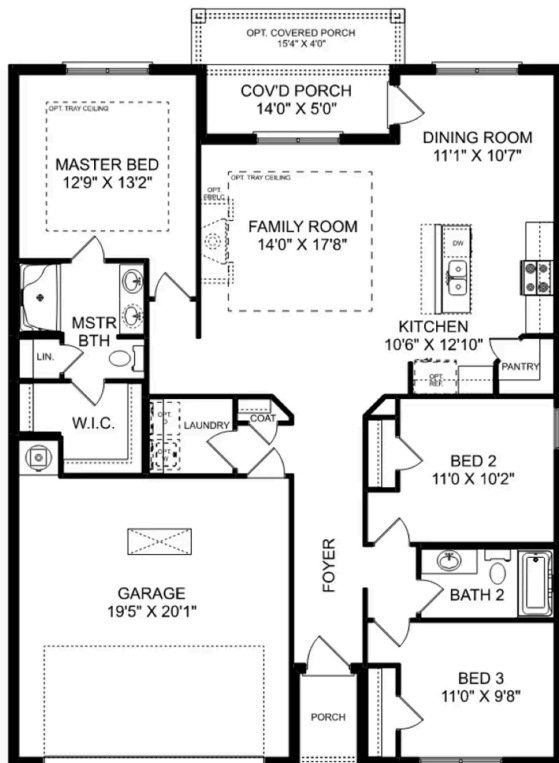


BEDS
3

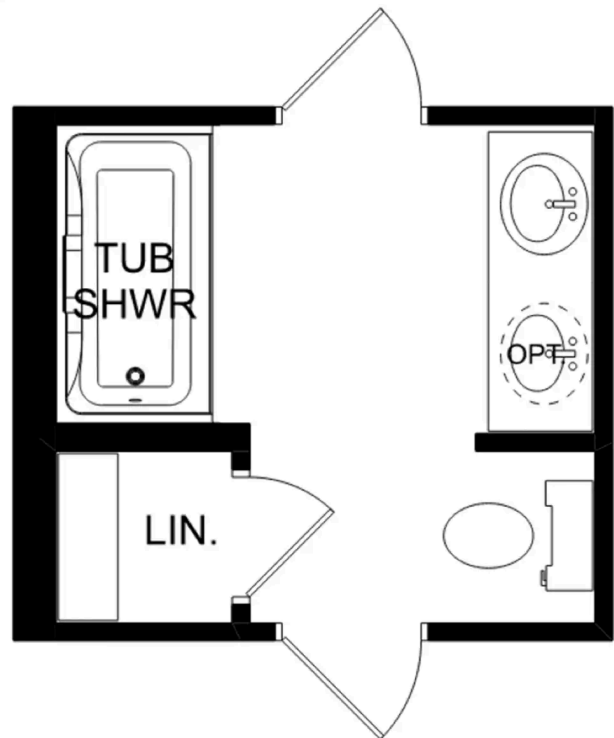
BATHS
2

SQ FT
1,484

PARKING
2



THE ASHEVILLE



THE ASHEVILLE OPTIONS

The Franklin

Exterior Options

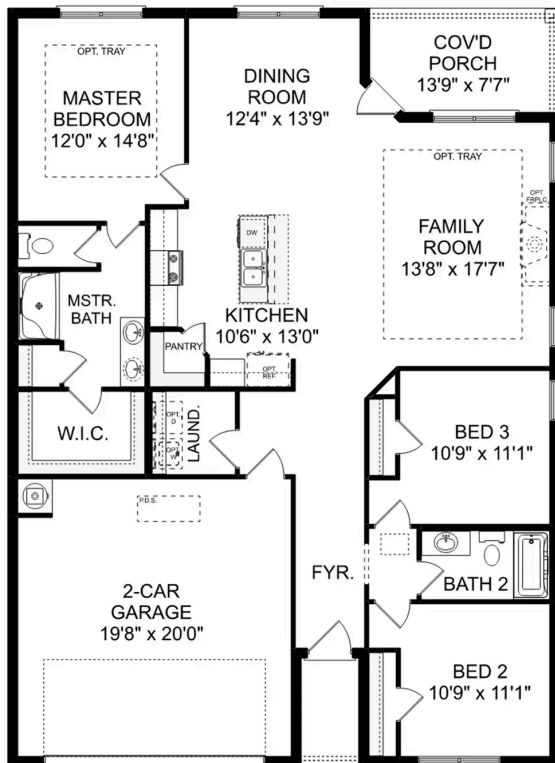


BEDS
3

BATHS
2

SQ FT
1,620

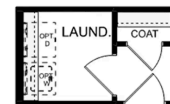
PARKING
2



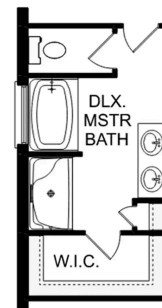
THE FRANKLIN



OPT. DROP ZONE



OPT. COAT CLOSET



OPT. DELUXE MASTER BATH

THE FRANKLIN OPTIONS

The Daphne

Exterior Options

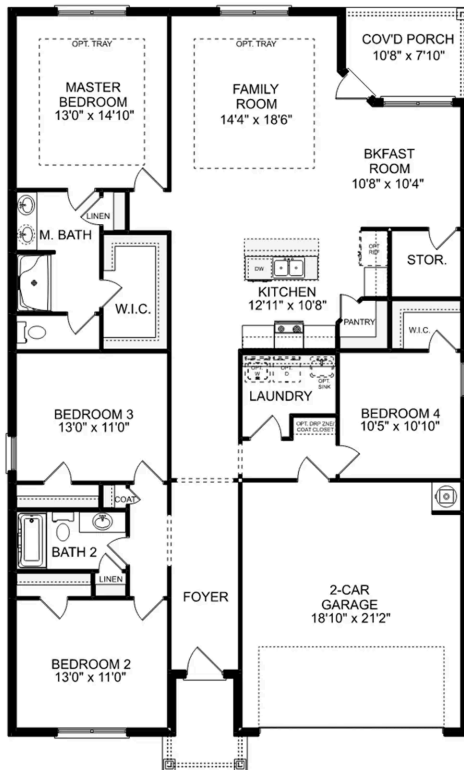


BEDS
4

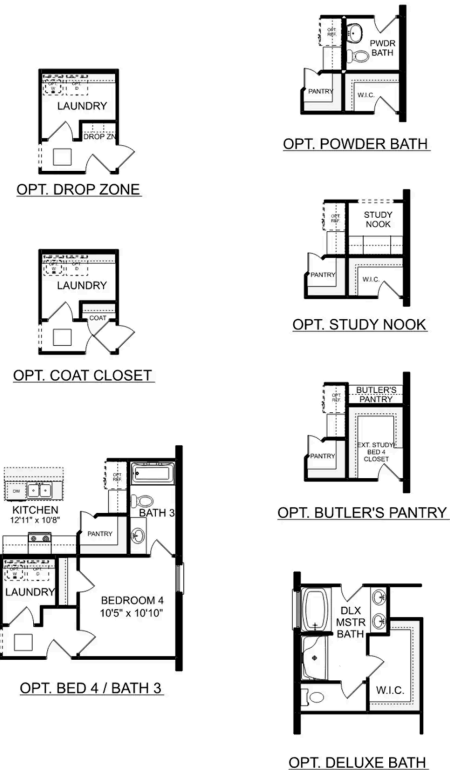
BATHS
2

SQ FT
1,964

PARKING
2



THE DAPHNE



THE DAPHNE OPTIONS



Clearview in Hazel Green, AL

Call (256) 291-1937
DAVIDSONHOMES.COM

The Everett

Exterior Options

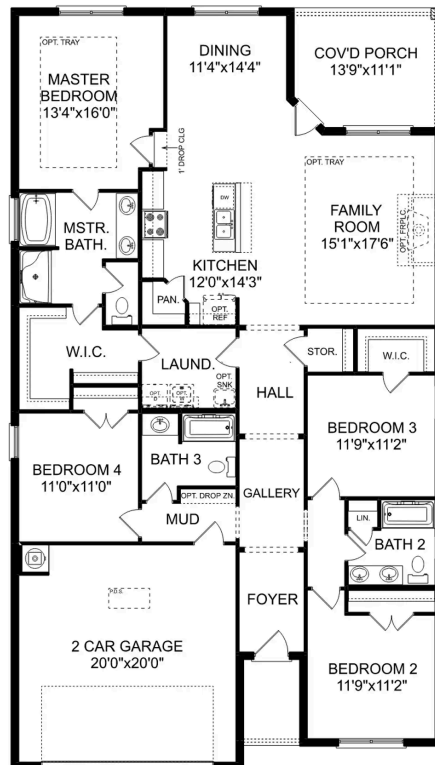


BEDS
4

BATHS
3

SQ FT
2,136

PARKING
2



THE EVERETT



The Shelby A

Exterior Options

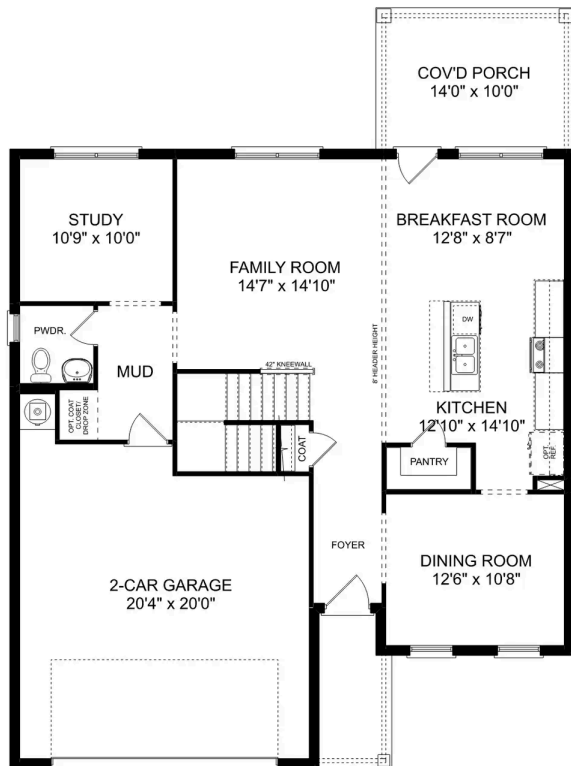


BEDS
3

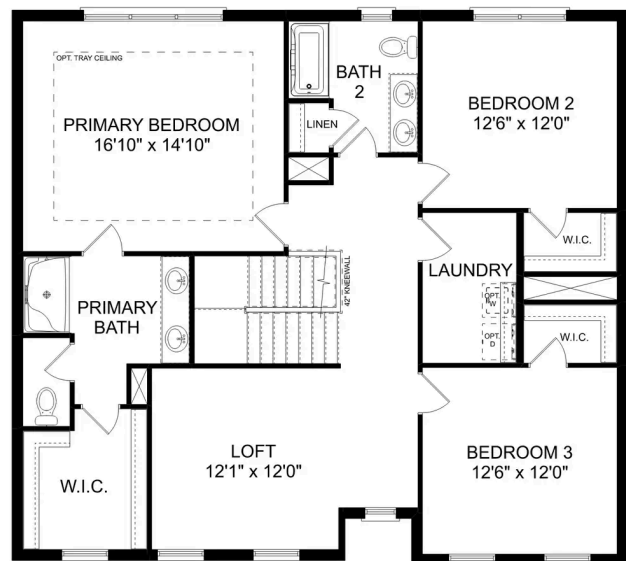
BATHS
2.5

SQ FT
2,452

PARKING
2



MAIN FLOOR



UPPER FLOOR

The Shelby A

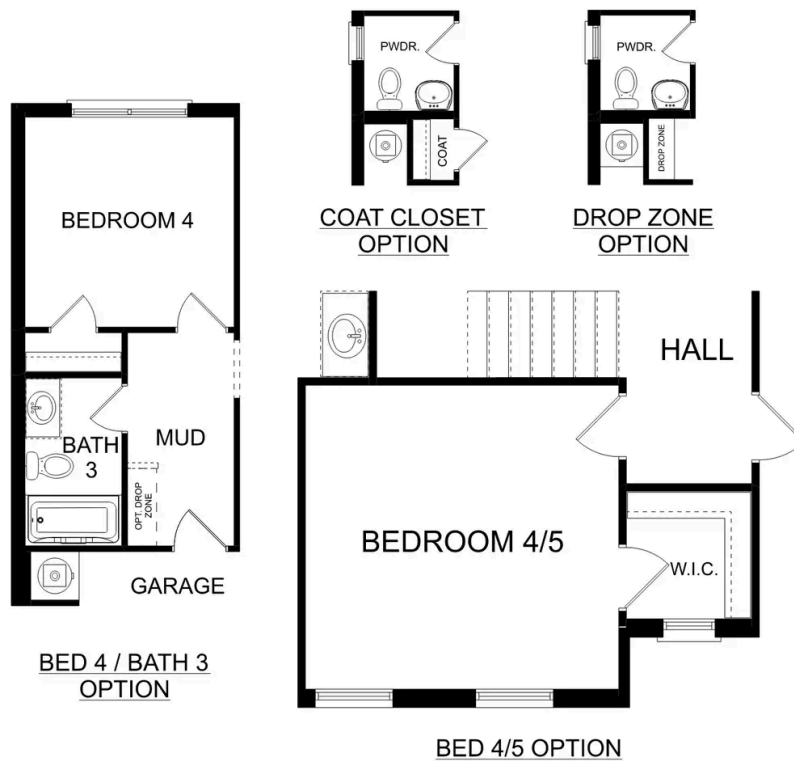
The Shelby welcomes you into a modern, open space, complete with a formal dining room and study. The kitchen overlooks an open-concept family room. The second floor features a spacious master bedroom with a large walk-in closet and master bath along with two additional bedrooms with ample walk-in closets of their own.

BEDS
3

BATHS
2.5

SQ FT
2,452

GARAGE
2



PLAN OPTIONS

The Charleston D



Description

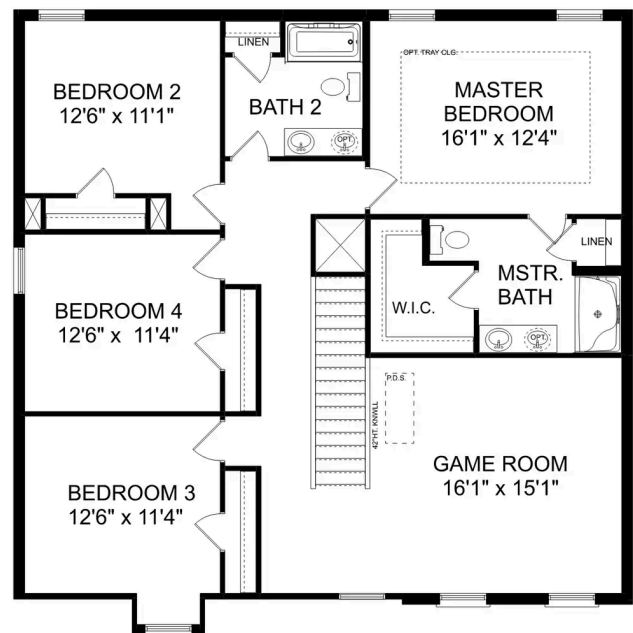
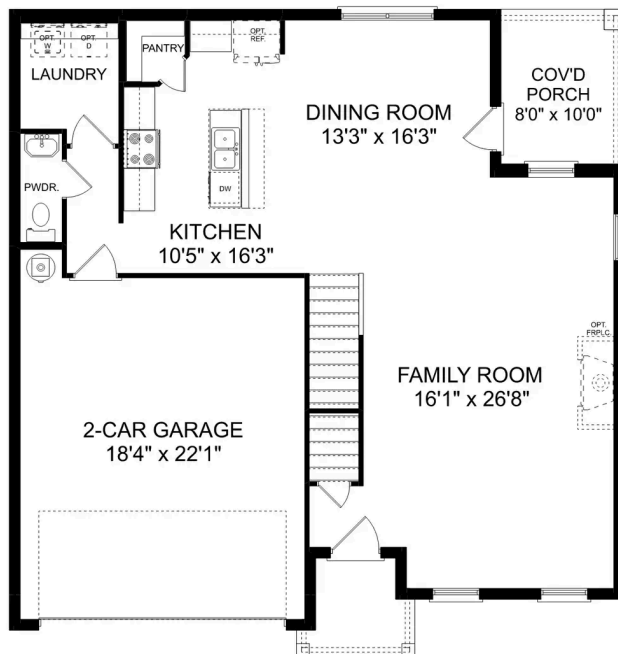
The sky's the limit with The Charleston's two-story layout and massive bonus room. Inside the home's brick exterior, the open-concept kitchen overlooks the huge family room. The Master Suite offers you a personal retreat – complete with large walk-in closet.

BEDS
4

BATHS
2.5

SQ FT
2,505

PARKING
2



The Charleston D

The sky's the limit with The Charleston's two-story layout and massive bonus room. Inside the home's brick exterior, the open-concept kitchen overlooks the huge family room. The Master Suite offers you a personal retreat – complete with large walk-in closet. Whether you're looking for a game room or a fifth bedroom, the upstairs bonus room gives you all the flexibility you need. Make it your own with The Charleston's flexible floor plan! Just know that offerings vary by location, so please discuss our standard features and upgrade options with your community's agent.

BEDS
4

BATHS
2.5

SQ FT
2,505

GARAGE
2



THE CHARLESTON D OPTIONS

The Chelsea A

Exterior Options

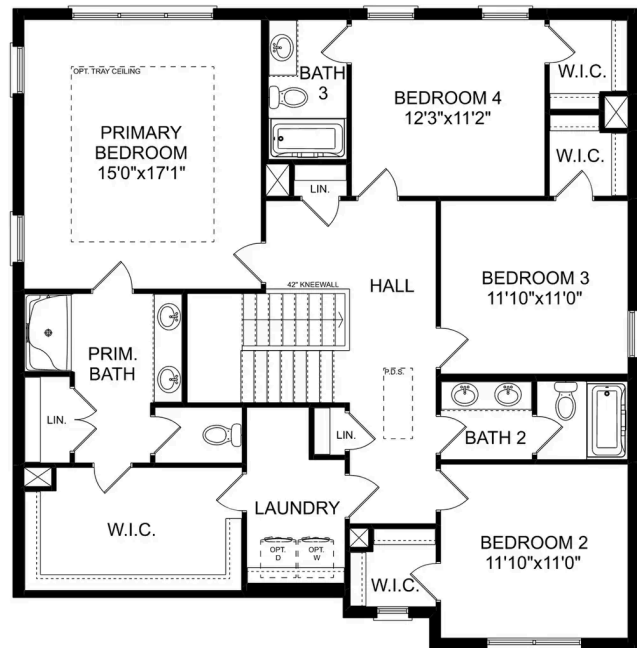
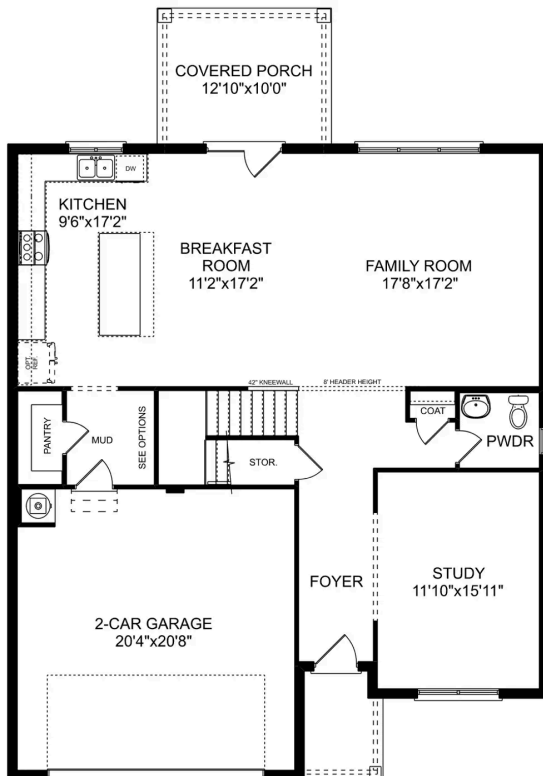


BEDS
4

BATHS
3.5

SQ FT
2,769

PARKING
2



The Chelsea A

The Chelsea's windows fill the open floor plan with natural light, welcoming you into this charming home. The kitchen showcases ample counterspace, overlooking the breakfast and family room. A large study on the first floor offers potential, and the home's second floor features four bedrooms, each with plenty of closet space. The master bedroom is separate from the other bedrooms for added privacy, and the fourth bedroom features its own private bath.

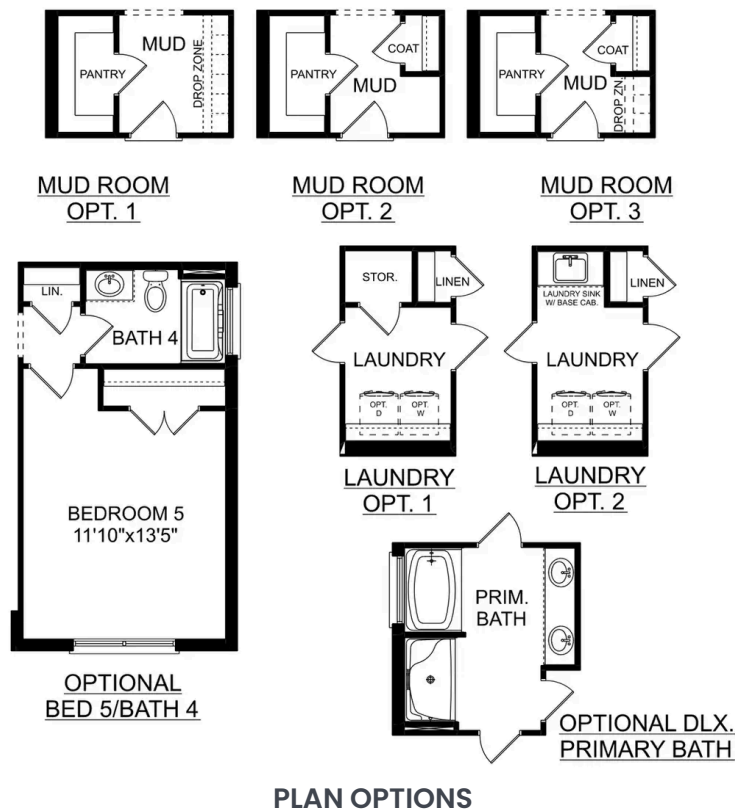
Make it your own with The Chelsea's flexible floor plan. Offerings vary by location, so please discuss your options with your community's agent.

BEDS
4

BATHS
3.5

SQ FT
2,769

GARAGE
2



The Richmond D



Description

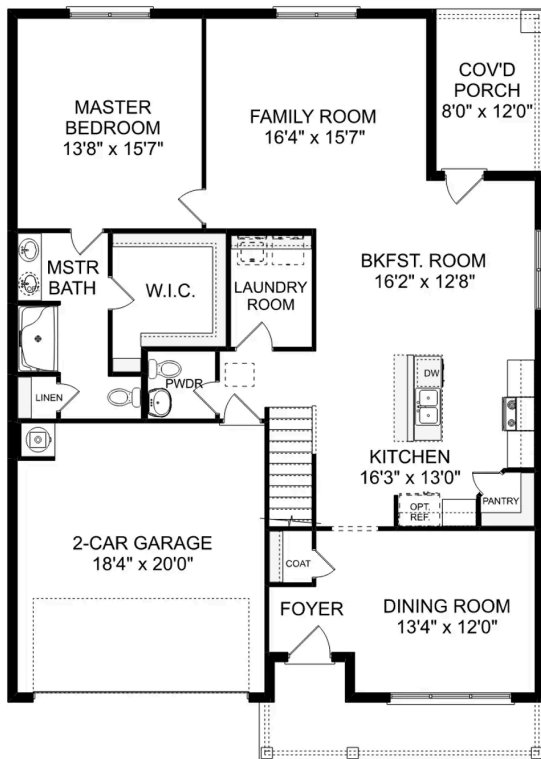
Starring five bedrooms and plenty of space, The Richmond features a sprawling layout! Enter the foyer and discover the elegant dining room to the left. The home quickly expands into an open-concept living space, as the charming kitchen overlooks the breakfast nook and family room.

BEDS
5

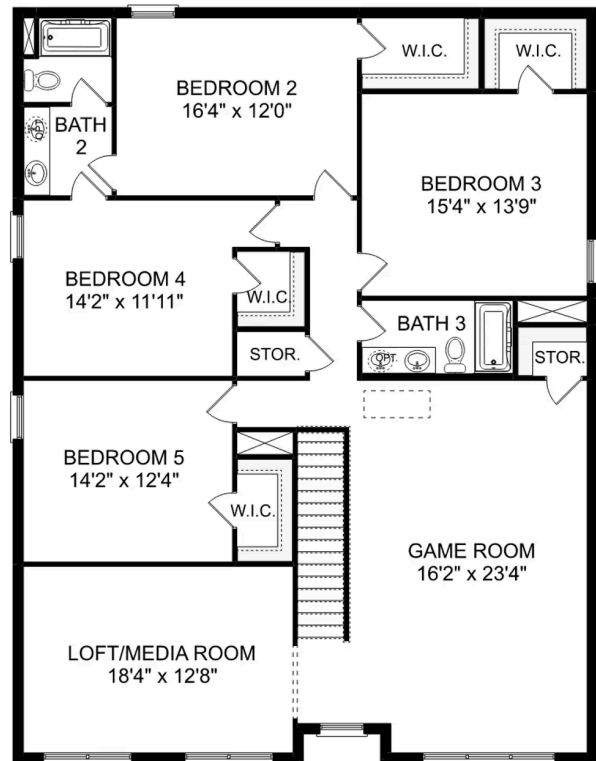
BATHS
3.5

SQ FT
3,537

PARKING
2



THE RICHMOND D MAIN FLOOR



THE RICHMOND D UPPER FLOOR

The Richmond D

Starring five bedrooms and plenty of space, The Richmond features a sprawling layout! Enter the foyer and discover the elegant dining room to the left. The home quickly expands into an open-concept living space, as the charming kitchen overlooks the breakfast nook and family room. Continue through to the Master Suite, featuring a huge walk-in closet.

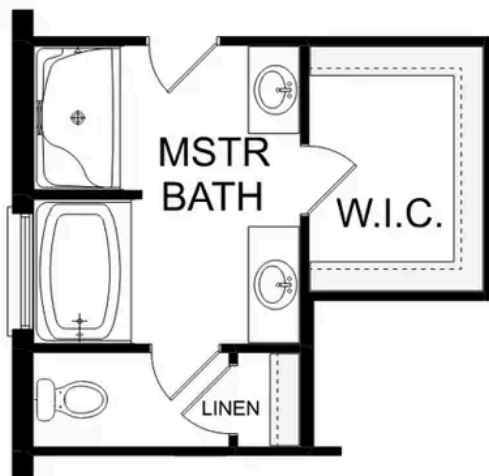
Upstairs, the plan features four more bedrooms, in addition to a game room and media room. Whether you're looking for a home theater or a home gym, The Richmond offers all the space you need.

BEDS
5

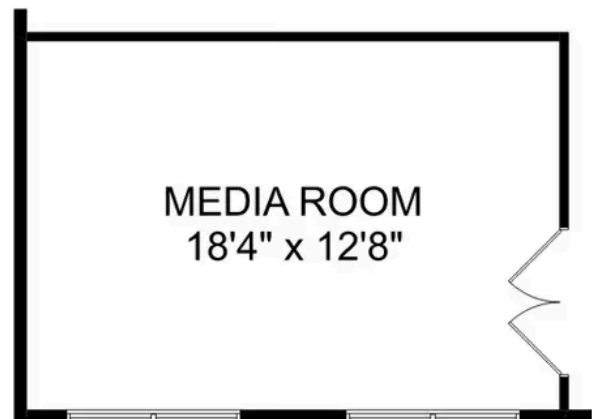
BATHS
3.5

SQ FT
3,537

GARAGE
2



OPTIONAL DELUXE
MASTER BATH



OPTIONAL
MEDIA ROOM

THE RICHMOND D OPTIONS