

# Ivy Hills

## Davidson Homes in Toney, AL

Are you looking for a new home in a peaceful, beautiful area? Look no further than Ivy Hills, Toney, Alabama – the perfect place to call home! Ivy Hills offers something for everyone – from quiet country living to the convenience of city amenities. With the close proximity to Huntsville, you'll be able to take advantage of all the great attractions the city has to offer, including Facebook, Redstone Arsenal, and Aerojet Rocketdyne. Shopping and dining are just around the corner, and the nearby Harvest Square Nature Preserve and Wade Mountain offer plenty of outdoor activities, and a short commute to Research Park, HWY 53, and HWY 231/431.

### Features

Community Pool & Cabana  
Great Public Schools  
20 Minutes to the Airport

### Local Schools

Madison County School Di...  
Madison Cross Roads Ele...  
Sparkman Middle  
Sparkman High

### Utilities

Electric: Huntsville Utilities  
Water: Madison County



Community Address

127 Ivy Vine Dr.

New Homes

08

Floor Plans

08

Homes from the

\$280s

Copyright 2024 Davidson Homes, Inc. | All Rights Reserved | Davidson Homes is a leading builder of quality new homes across the Southeast. Davidson Homes reserves the right to adjust items listed without prior notice or obligation. Such items may include, but are not limited to, options, included features and community information, pricing, amenities, square footage, terms or availability. Features, options, floor plans, elevations, colors, dimensions and photographs are for illustration purposes and may vary from homes built. Please see your community specialist for details. Equal housing lender. Last Updated 05/20/2024.





Ivy Hills in Toney, AL

## Quick Move-In Homes

Kristin Bjerke  
Call (256) 422-0904



LIMITED TIME

Save **25%** on  
Design Upgrades!

PLUS, ENJOY  
**\$5,000\***  
TO USE AS YOU CHOOSE!

LEARN MORE →

\*See link for terms/conditions.

UPDATED  
**05/20/2024**

HOMES  
**08**

COMMUNITY ADDRESS  
**127 Ivy Vine Dr.**



~~\$421,302~~ **\$394,900**

**4 Beds 3 Baths 2,452 Sq Ft**

124 Ivy Vine Drive | #237

The Shelby B - Side Entry Plan



~~\$415,006~~ **\$394,900**

**4 Beds 3 Baths 2,452 Sq Ft**

123 Ivy Vine Drive | #239

The Shelby C - Side Entry Plan



~~\$436,826~~ **\$419,900**

**4 Beds 3.5 Baths 2,769 Sq Ft**

125 Ivy Vine Drive | #240

The Chelsea C - Side Entry Plan



**\$314,900**

**3 Beds 2 Baths 1,620 Sq Ft**

134 Ivy Vine Drive | #232

The Franklin C Plan



**\$339,900**

**4 Beds 2 Baths 1,964 Sq Ft**

136 Ivy Vine Drive | #231

The Daphne D Plan



~~\$348,024~~ **\$339,900**

**4 Beds 3 Baths 1,964 Sq Ft**

133 Ivy Vine Drive | #244

The Daphne C Plan



~~\$358,916~~ **\$349,900**

**4 Beds 3 Baths 2,136 Sq Ft**

135 Ivy Vine Drive | #245

The Everett B Plan



**\$399,973**

**4 Beds 3.5 Baths 2,769 Sq Ft**

137 Ivy Vine Drive | #246

The Chelsea A Plan

Copyright 2024 Davidson Homes, Inc. | All Rights Reserved | Davidson Homes is a leading builder of quality new homes across the Southeast. Davidson Homes reserves the right to adjust items listed without prior notice or obligation. Such items may include, but are not limited to, options, included features and community information, pricing, amenities, square footage, terms or availability. Features, options, floor plans, elevations, colors, dimensions and photographs are for illustration purposes and may vary from homes built. Please see your community specialist for details. Equal housing lender.







Ivy Hills in Toney, AL








## Community Homesite Map

Kristin Bjerke  
Call (256) 422-0904



MOVE-IN READY QUICK MOVE-IN COMING SOON AVAILABLE SOLD

### Featured Homes for Sale

 #237	<b>The Shelby B - Side Entry</b> 124 Ivy Vine Drive <b>\$394,900</b>	 #239	<b>The Shelby C - Side Entry</b> 123 Ivy Vine Drive <b>\$394,900</b>	 #240	<b>The Chelsea C - Side Entry</b> 125 Ivy Vine Drive <b>\$419,900</b>
 #232	<b>The Franklin C</b> 134 Ivy Vine Drive <b>\$314,900</b>	 #231	<b>The Daphne D</b> 136 Ivy Vine Drive <b>\$339,900</b>	 #244	<b>The Daphne C</b> 133 Ivy Vine Drive <b>\$339,900</b>
 #245	<b>The Everett B</b> 135 Ivy Vine Drive <b>\$349,900</b>	 #246	<b>The Chelsea A</b> 137 Ivy Vine Drive <b>\$399,973</b>		



# The Asheville C



## Description

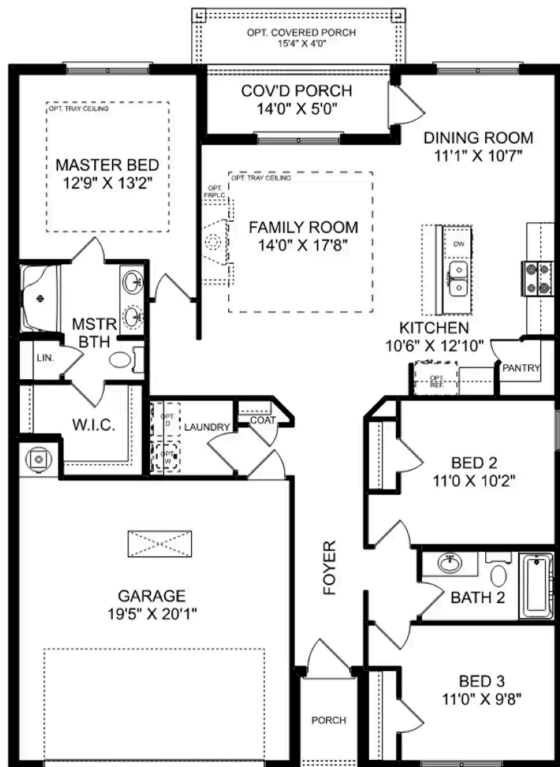
Discover the charm of one-level living with this open-concept home! From The Asheville's large, kitchen island overlooking the family room to its isolated Master Bedroom, we've designed this home with you in mind. The three bedrooms offer plenty of space for you and your guests.

**BEDS**  
**3**

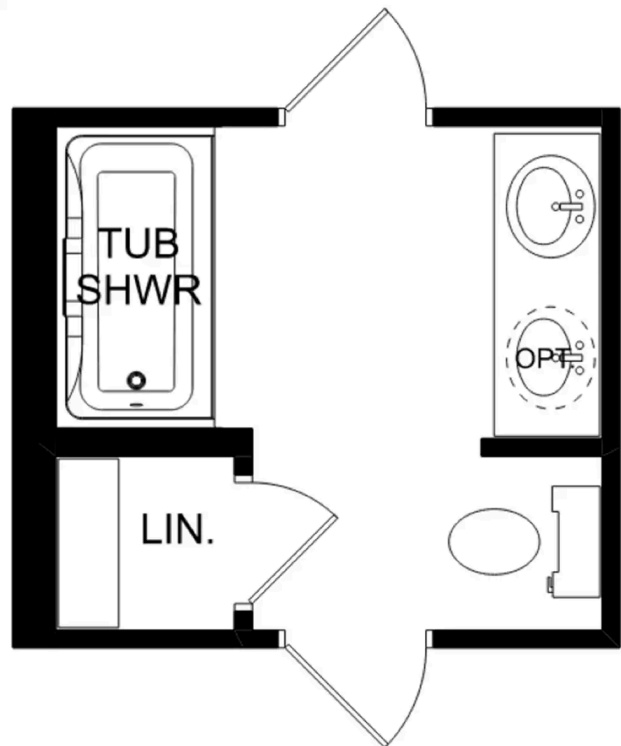
**BATHS**  
**2**

**SQ FT**  
**1,484**

**PARKING**  
**2**



**THE ASHEVILLE C**



**THE ASHEVILLE C OPTIONS**



# The Franklin C



## Description

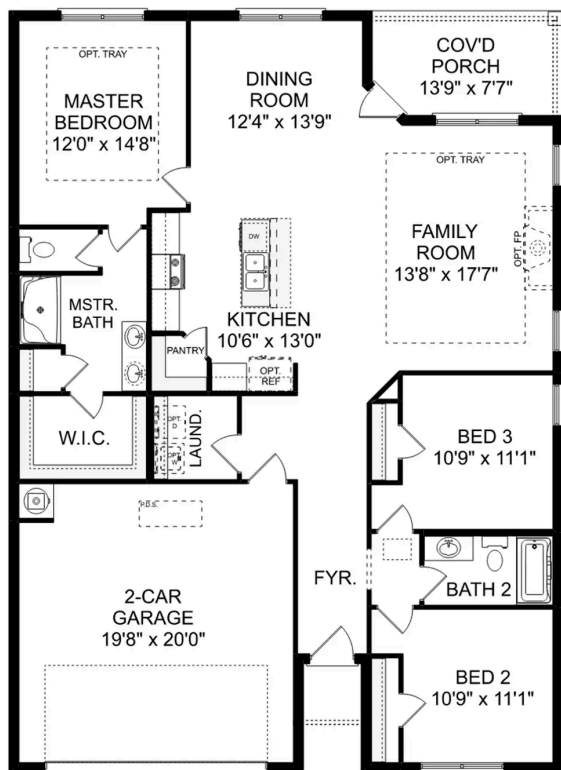
Within this cozy, one-level home lies a modern use of space. From the kitchen's large island to the family room's spacious open-concept, you're surrounded by owner-centric design.

**BEDS**  
**3**

**BATHS**  
**2**

**SQ FT**  
**1,620**

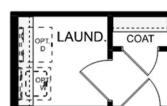
**PARKING**  
**2**



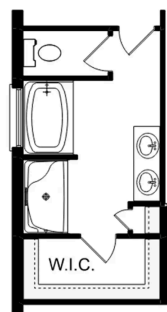
**THE FRANKLIN C**



OPT. DROP ZONE



OPT. COAT CLOSET



OPT. DELUXE MASTER BATH  
**THE FRANKLIN C OPTIONS**

# The Daphne

## Exterior Options

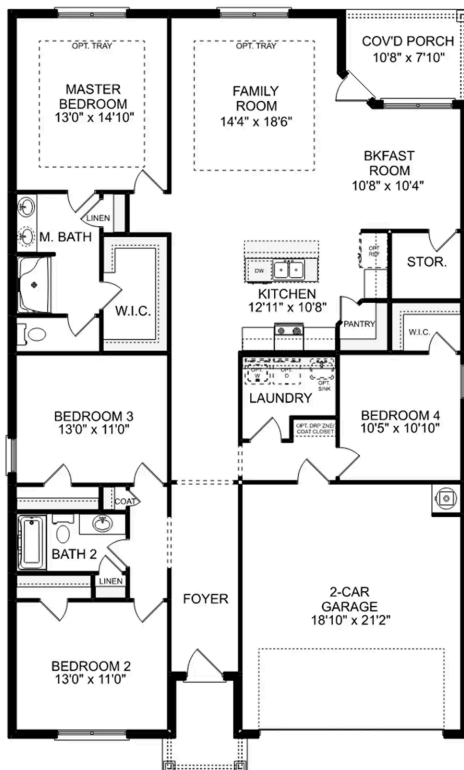


**BEDS**  
**4**

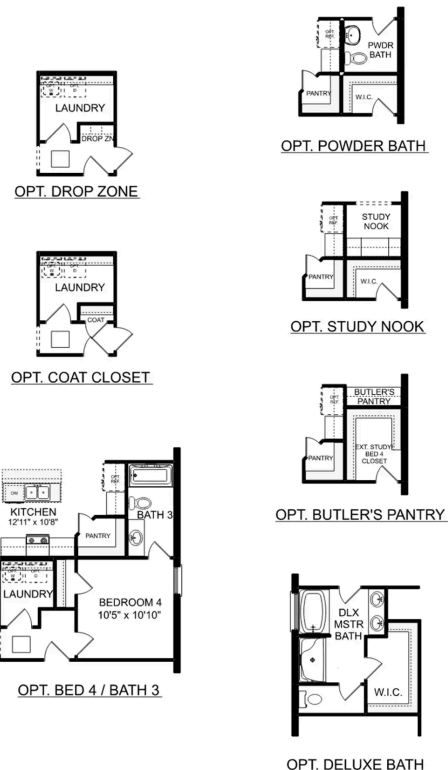
**BATHS**  
**2**

**SQ FT**  
**1,964**

**PARKING**  
**2**



**THE DAPHNE**



**THE DAPHNE OPTIONS**





Ivy Hills in Toney, AL

Call (256) 422-0904  
DAVIDSONHOMES.COM

## The Everett

### Exterior Options

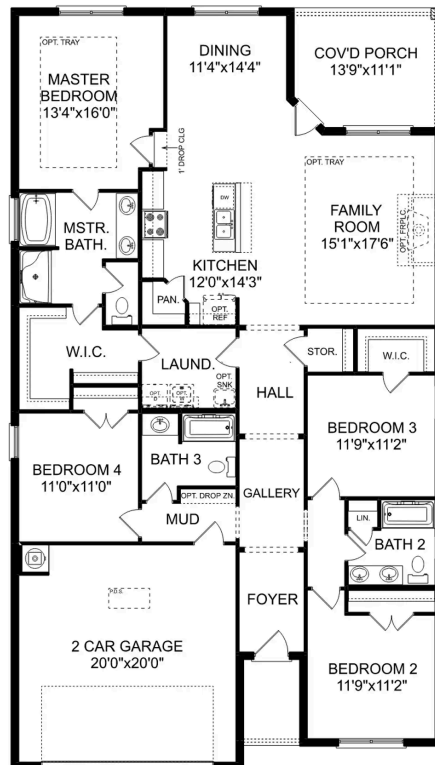


BEDS  
**4**

BATHS  
**3**

SQ FT  
**2,136**

PARKING  
**2**



THE EVERETT



# The Shelby A

## Exterior Options

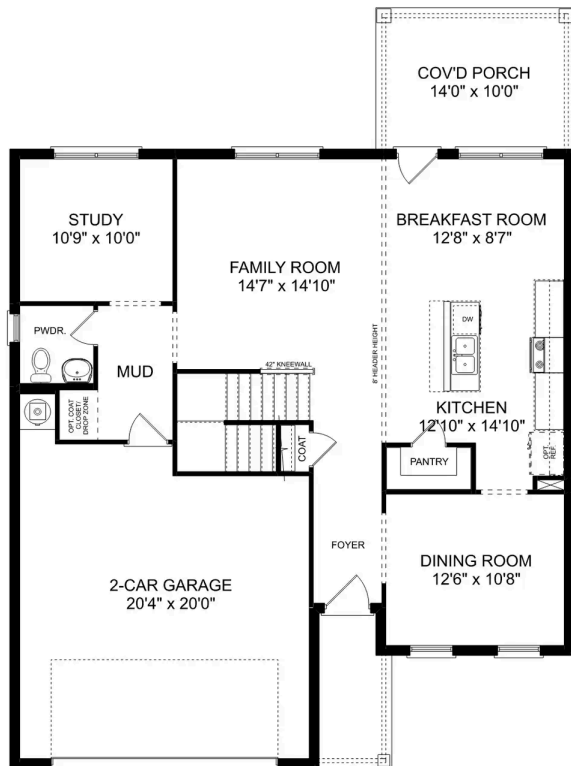


**BEDS**  
**3**

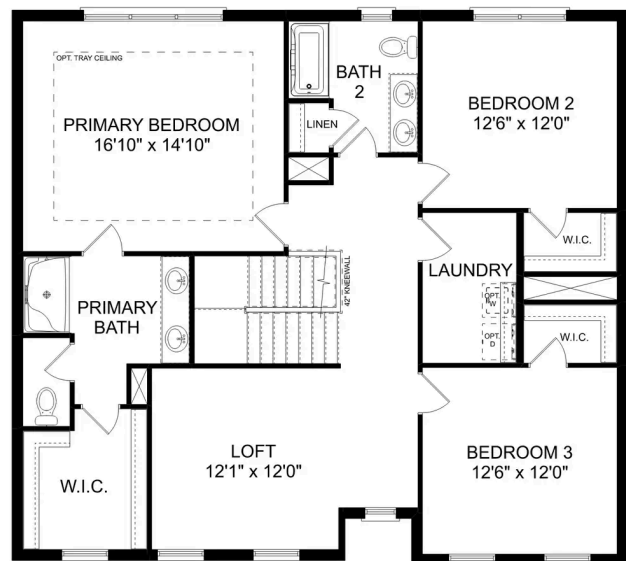
**BATHS**  
**2.5**

**SQ FT**  
**2,452**

**PARKING**  
**2**



**MAIN FLOOR**



**UPPER FLOOR**



## The Shelby A

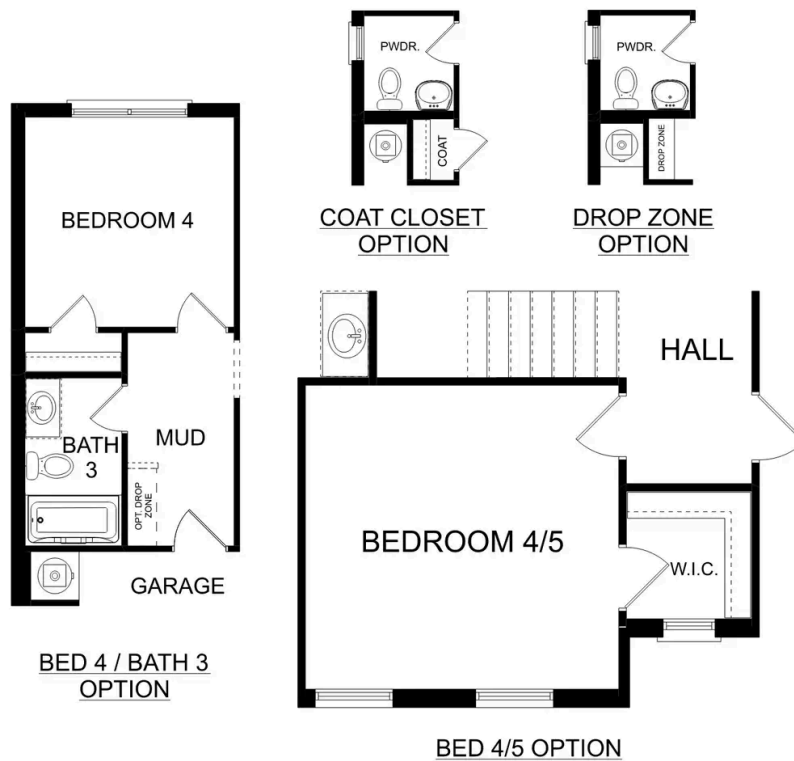
The Shelby welcomes you into a modern, open space, complete with a formal dining room and study. The kitchen overlooks an open-concept family room. The second floor features a spacious master bedroom with a large walk-in closet and master bath along with two additional bedrooms with ample walk-in closets of their own.

BEDS  
**3**

BATHS  
**2.5**

SQ FT  
**2,452**

GARAGE  
**2**



PLAN OPTIONS

# The Charleston D



## Description

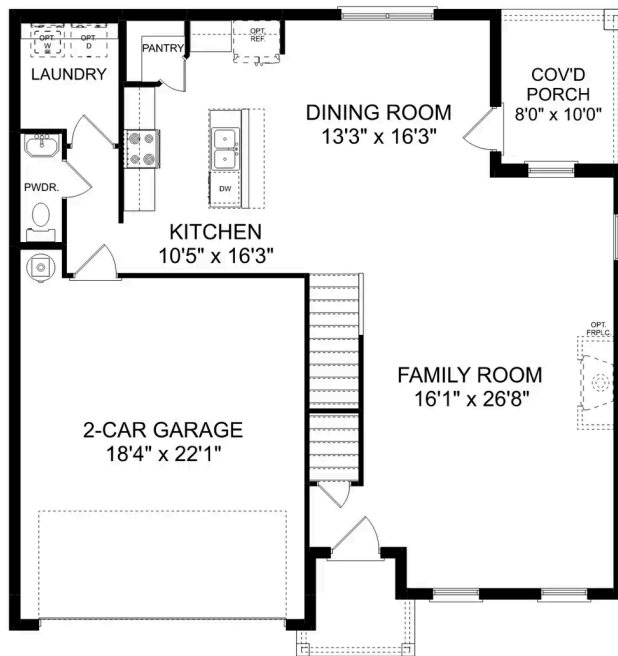
The sky's the limit with The Charleston's two-story layout and massive bonus room. Inside the home's brick exterior, the open-concept kitchen overlooks the huge family room. The Master Suite offers you a personal retreat – complete with large walk-in closet.

**BEDS**  
**4**

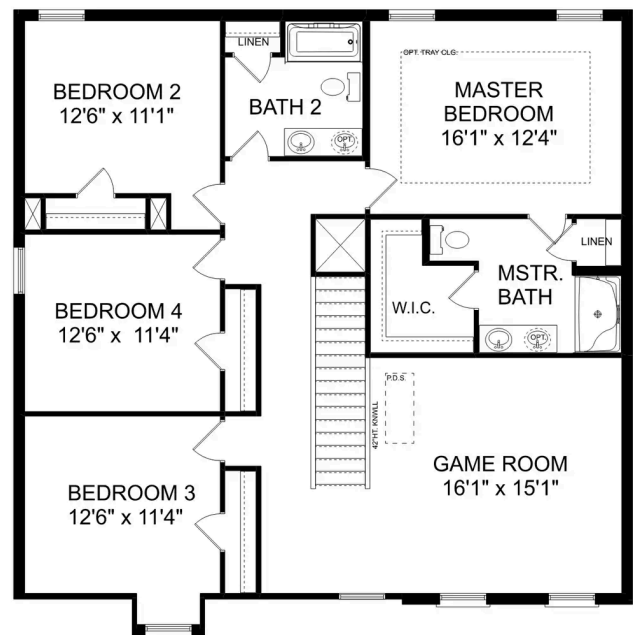
**BATHS**  
**2.5**

**SQ FT**  
**2,505**

**PARKING**  
**2**



THE CHARLESTON D MAIN FLOOR



THE CHARLESTON D UPPER FLOOR



## The Charleston D

The sky's the limit with The Charleston's two-story layout and massive bonus room. Inside the home's brick exterior, the open-concept kitchen overlooks the huge family room. The Master Suite offers you a personal retreat – complete with large walk-in closet. Whether you're looking for a game room or a fifth bedroom, the upstairs bonus room gives you all the flexibility you need. Make it your own with The Charleston's flexible floor plan! Just know that offerings vary by location, so please discuss our standard features and upgrade options with your community's agent.

BEDS  
**4**

BATHS  
**2.5**

SQ FT  
**2,505**

GARAGE  
**2**



THE CHARLESTON D OPTIONS

# The Chelsea A

## Exterior Options

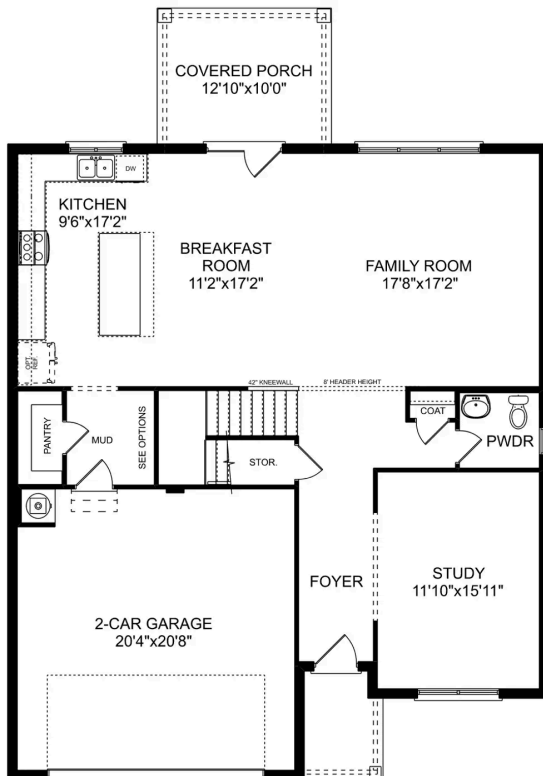


**BEDS**  
**4**

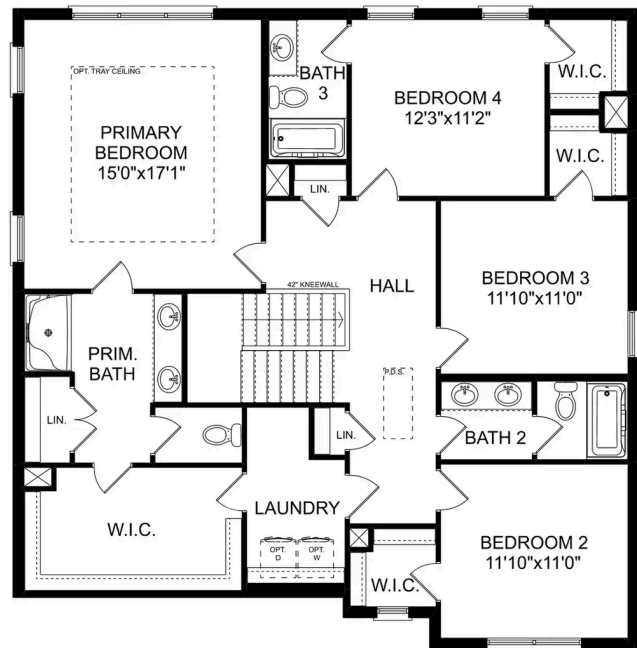
**BATHS**  
**3.5**

**SQ FT**  
**2,769**

**PARKING**  
**2**



**MAIN FLOOR**



**UPPER FLOOR**



## The Chelsea A

The Chelsea's windows fill the open floor plan with natural light, welcoming you into this charming home. The kitchen showcases ample counterspace, overlooking the breakfast and family room. A large study on the first floor offers potential, and the home's second floor features four bedrooms, each with plenty of closet space. The master bedroom is separate from the other bedrooms for added privacy, and the fourth bedroom features its own private bath.

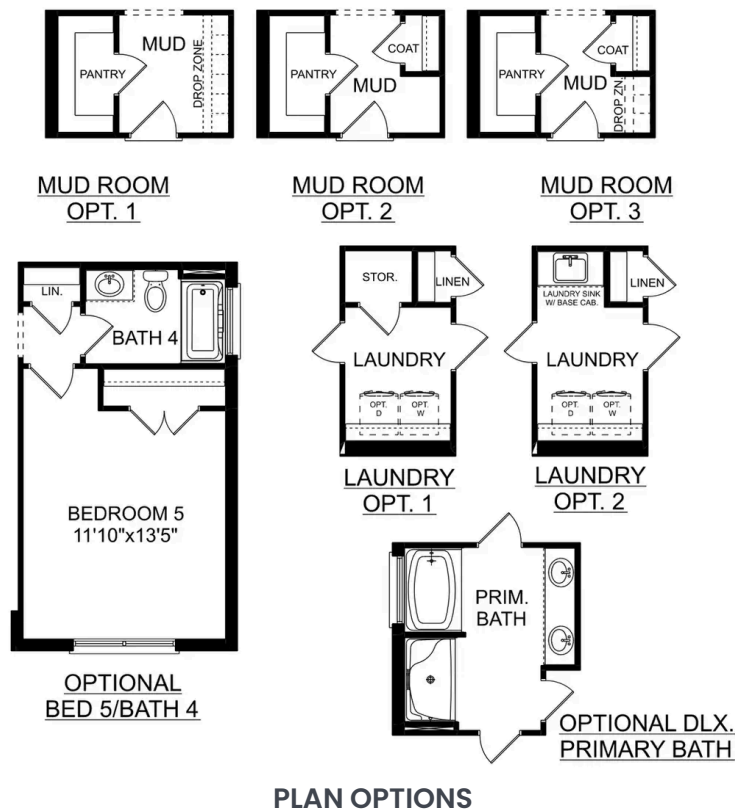
Make it your own with The Chelsea's flexible floor plan. Offerings vary by location, so please discuss your options with your community's agent.

BEDS  
**4**

BATHS  
**3.5**

SQ FT  
**2,769**

GARAGE  
**2**



# The Richmond D



## Description

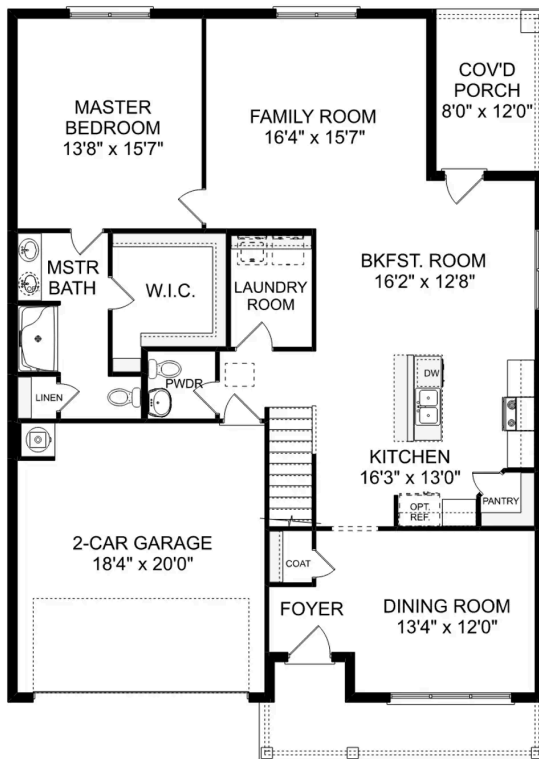
Starring five bedrooms and plenty of space, The Richmond features a sprawling layout! Enter the foyer and discover the elegant dining room to the left. The home quickly expands into an open-concept living space, as the charming kitchen overlooks the breakfast nook and family room.

**BEDS**  
**5**

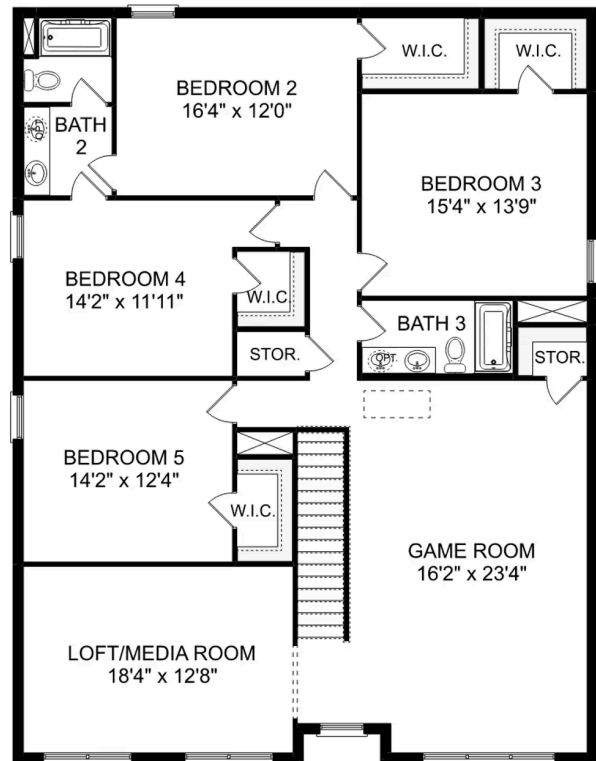
**BATHS**  
**3.5**

**SQ FT**  
**3,537**

**PARKING**  
**2**



**THE RICHMOND D MAIN FLOOR**



**THE RICHMOND D UPPER FLOOR**

## The Richmond D

Starring five bedrooms and plenty of space, The Richmond features a sprawling layout! Enter the foyer and discover the elegant dining room to the left. The home quickly expands into an open-concept living space, as the charming kitchen overlooks the breakfast nook and family room. Continue through to the Master Suite, featuring a huge walk-in closet.

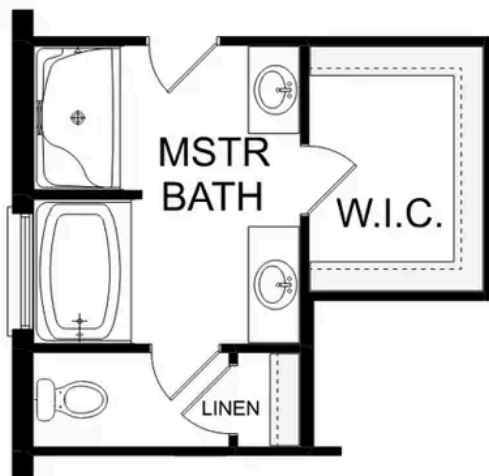
Upstairs, the plan features four more bedrooms, in addition to a game room and media room. Whether you're looking for a home theater or a home gym, The Richmond offers all the space you need.

BEDS  
**5**

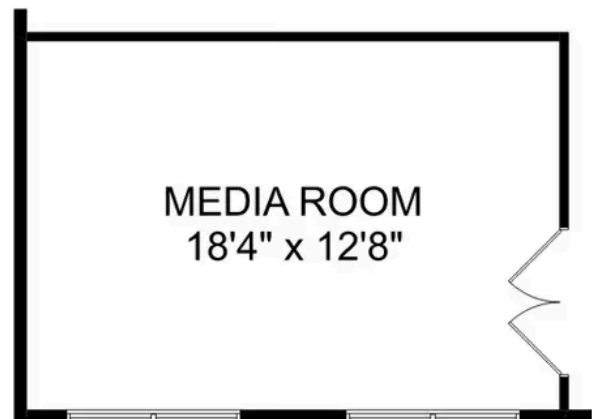
BATHS  
**3.5**

SQ FT  
**3,537**

GARAGE  
**2**



OPTIONAL DELUXE  
MASTER BATH



OPTIONAL  
MEDIA ROOM

### THE RICHMOND D OPTIONS