

Royal Crest

Davidson Homes in San Antonio, TX

Welcome to Royal Crest - a new homes community coming soon to the heart of San Antonio, TX. Davidson Homes is thrilled to paint a fresh canvas of modern living in the Southeast with our latest offering of new homes in Royal Crest.

Experience true tranquility and a daily getaway as Royal Crest perfectly fuses the vibrant Texan culture with our signature craftsmanship. Imagine both scenic, serene living and the convenience of being close to the city's amenities.

Local Schools

Royal Ridge Elementary
White Middle
Roosevelt High
Northeast ISD

Utilities

Electric: CPS
Water: SAWS



Community Address

6503 Lowrie Block

Floor Plans

03

Homes from the

\$350s

Copyright 2024 Davidson Homes, Inc. | All Rights Reserved | Davidson Homes is a leading builder of quality new homes across the Southeast. Davidson Homes reserves the right to adjust items listed without prior notice or obligation. Such items may include, but are not limited to, options, included features and community information, pricing, amenities, square footage, terms or availability. Features, options, floor plans, elevations, colors, dimensions and photographs are for illustration purposes and may vary from homes built. Please see your community specialist for details. Equal housing lender. Last Updated 05/20/2024.





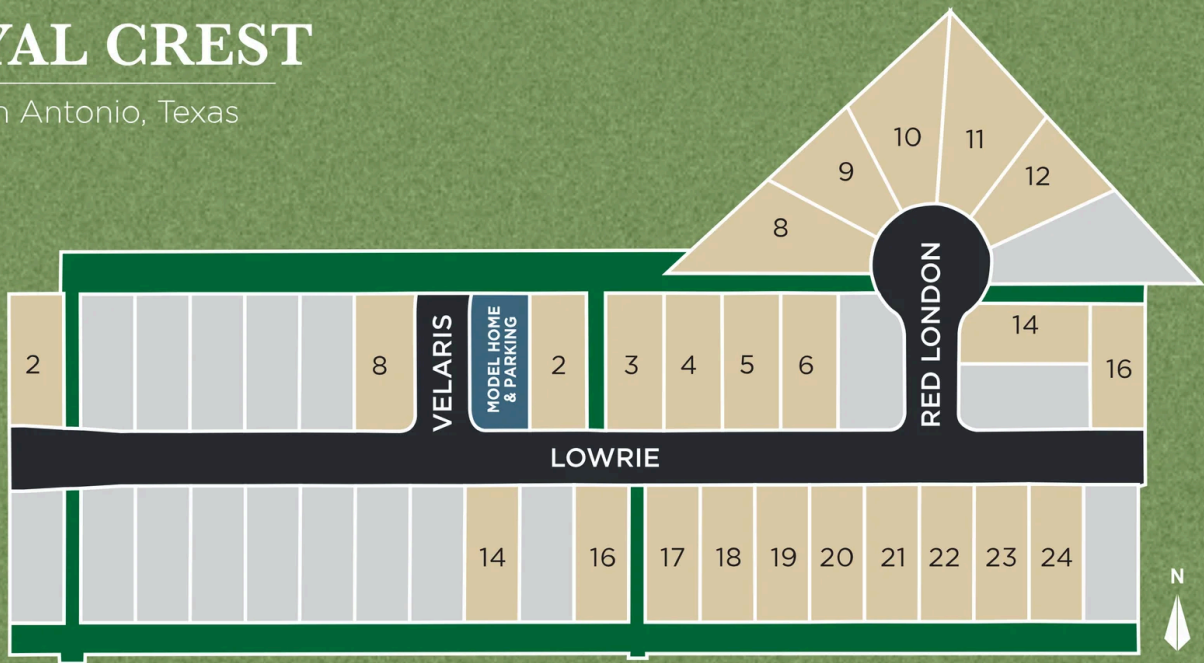
Royal Crest in San Antonio, TX

Community Homesite Map

Call (210) 625-7942

ROYAL CREST

San Antonio, Texas



The Daphne I

Exterior Options

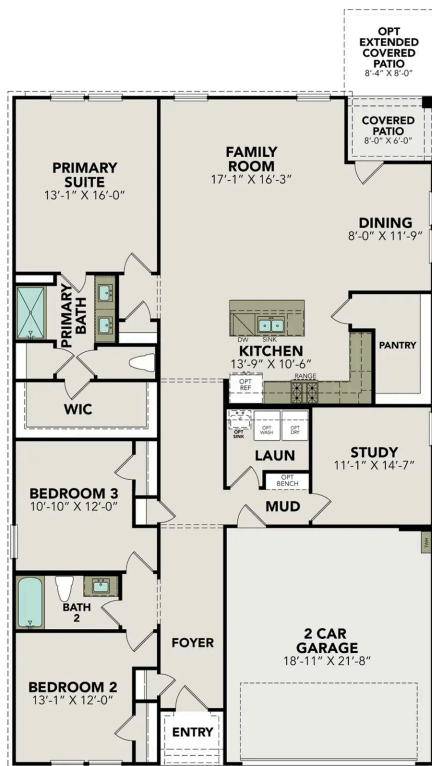


BEDS
3

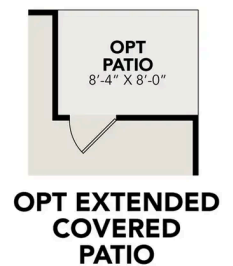
BATHS
2

SQ FT
1,917

PARKING
2



MAIN FLOOR PLAN



OPTIONS

The Murray I

Exterior Options

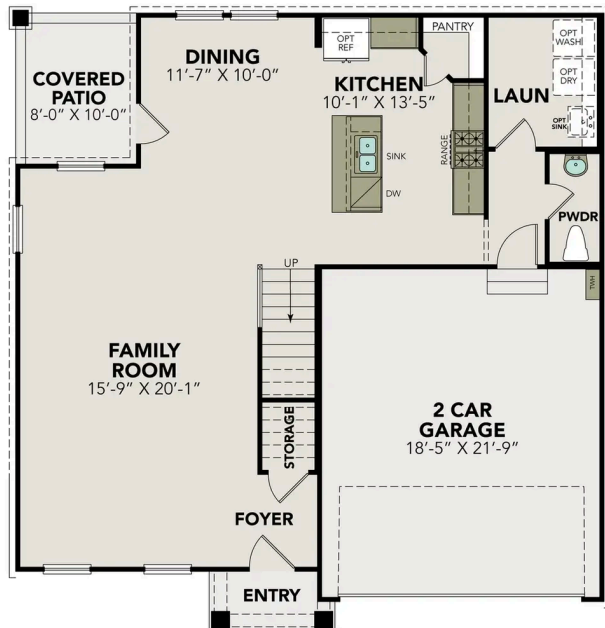


BEDS
4

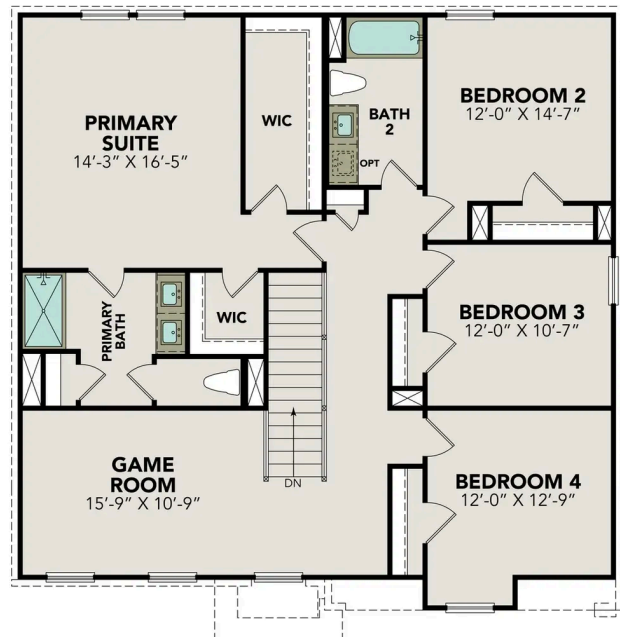
BATHS
2.5

SQ FT
2,397

PARKING
2



MAIN FLOOR PLAN



UPPER FLOOR PLAN

The Murray I

The Murray is a spacious two-story home that boasts an open-concept floor plan perfect for modern living. The main floor features a welcoming foyer that leads to a sprawling family room, which is bathed in natural light thanks to its large windows. The family room seamlessly flows into the dining area and kitchen, creating a perfect space for entertaining guests or spending quality time with loved ones. The second floor of The Murray is dedicated to rest and relaxation, featuring a spacious versatile game room, primary suite and three additional bedrooms.

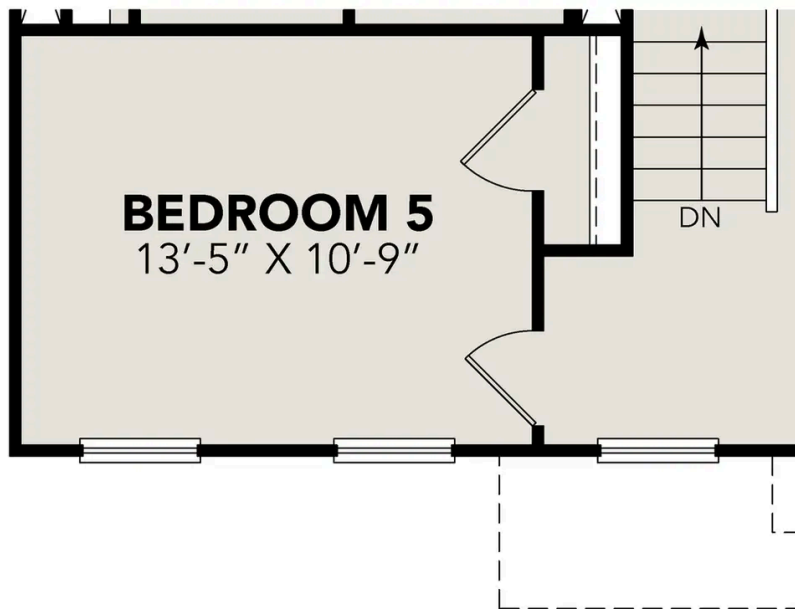
Make it your own with The Murray's flexible floor plan. Just know that offerings vary by location, so please discuss our standard features and upgrade options... with your community's agent.

BEDS
4

BATHS
2.5

SQ FT
2,397

GARAGE
2



OPT BEDROOM 5

OPTIONS

The Douglas E

Exterior Options

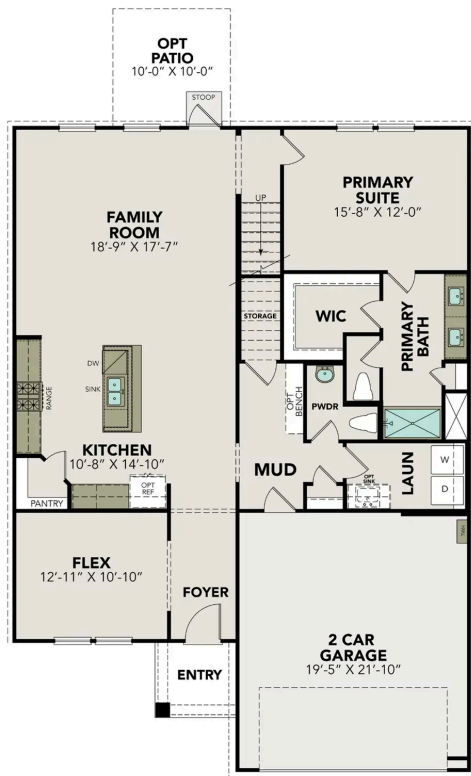


BEDS
3

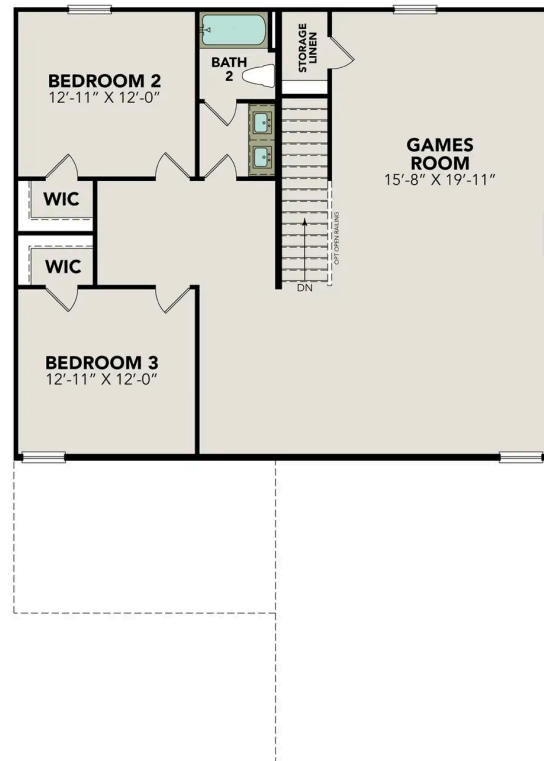
BATHS
2.5

SQ FT
2,738

PARKING
2



MAIN FLOOR PLAN



UPPER FLOOR PLAN

The Douglas E

Welcome to The Douglas! Behind this charming two-story exterior lies three bedrooms and plenty of space. The main floor features the primary suite, while the family room leads to the optional patio. Upstairs you'll find two additional bedrooms and a game room, perfect for multi-generational families!

Make it your own with The Douglas' flexible floor plan, featuring the optional guest retreat. Just know that offerings vary by location, so please discuss our standard features and upgrade options with your community's agent.

BEDS
3

BATHS
2.5

SQ FT
2,738

GARAGE
2



**OPT
GUEST
RETREAT**
OPTIONS