

Wood Trail

Davidson Homes in Toney, AL

Welcome to Wood Trail, nestled in the heart of the charming Toney, AL. As Toney's premier home builder, Davidson Homes is proud to offer gorgeous single-family homes in this new bustling community.

Surrounded by the beauty of nature and north Alabama's stunning wildlife, Wood Trail offers easy access to top employers like Meta and Aerojet Rocketdyne. Just minutes away, you'll find yourself enjoying the endless opportunities of downtown Huntsville while still appreciating the cozy location of Wood Trail.

Features

Gas Options Available
Great Public Schools
Large Lots Available

Local Schools

Madison County School Di...
Lynn Fanning Elementary
Moore's Mill Intermediate
Meridianville Middle
Hazel Green High

Utilities

Electric: Huntsville Utilities
Water: Madison County W...



Community Address

200 Pine Island Ave.

New Homes

05

Floor Plans

09

Homes from the

\$260s

Copyright 2024 Davidson Homes, Inc. | All Rights Reserved | Davidson Homes is a leading builder of quality new homes across the Southeast. Davidson Homes reserves the right to adjust items listed without prior notice or obligation. Such items may include, but are not limited to, options, included features and community information, pricing, amenities, square footage, terms or availability. Features, options, floor plans, elevations, colors, dimensions and photographs are for illustration purposes and may vary from homes built. Please see your community specialist for details. Equal housing lender. Last Updated 05/20/2024.





Wood Trail in Toney, AL

Quick Move-In Homes

UPDATED
05/20/2024

HOMES
05

Lou Montoya
Call (256) 368-0063



COMMUNITY ADDRESS
200 Pine Island Ave.



\$289,900
3 Beds 2 Baths 1,620 Sq Ft
211 Pine Island | #60
The Franklin Plan



\$289,500
3 Beds 2 Baths 1,620 Sq Ft
204 Pine Island | #70
The Franklin Plan



\$311,800
4 Beds 2 Baths 1,964 Sq Ft
120 Cedar Lake Road | #49
The Daphne Plan



\$278,990
3 Beds 2 Baths 1,484 Sq Ft
122 Cedar Lake Road | #50
The Asheville Plan



\$333,900
4 Beds 3 Baths 2,136 Sq Ft
302 Cherokee Glen Avenue | #89
The Everett B Plan





Wood Trail in Toney, AL

Community Homesite Map

Lou Montoya
Call (256) 368-0063

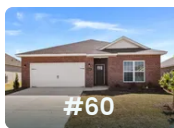


WOOD TRAIL

Toney, Alabama

MOVE-IN READY QUICK MOVE-IN COMING SOON AVAILABLE SOLD

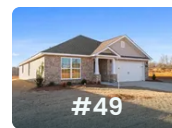
Featured Homes for Sale



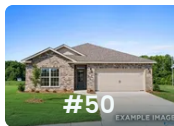
The Franklin
211 Pine Island
\$289,900



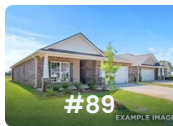
The Franklin
204 Pine Island
\$289,500



The Daphne
120 Cedar Lake Road
\$311,800



The Asheville
122 Cedar Lake Road
\$278,990



The Everett B
302 Cherokee Glen Avenue
\$333,900



The Asheville

Exterior Options

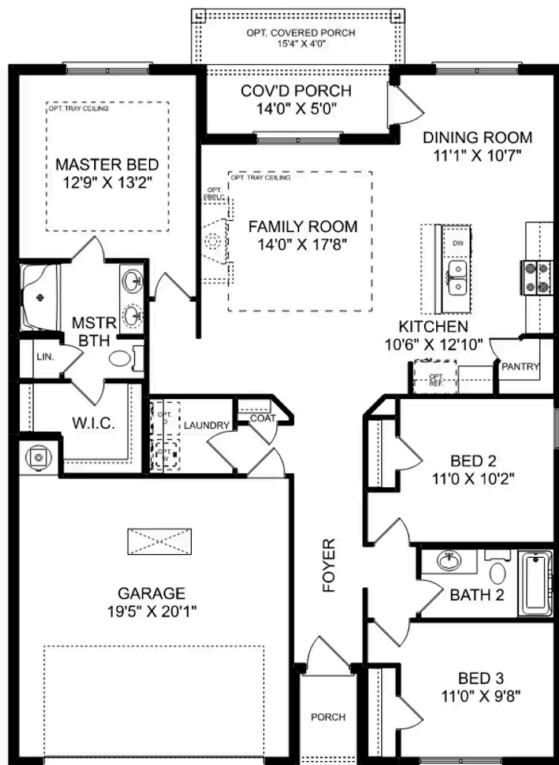


BEDS
3

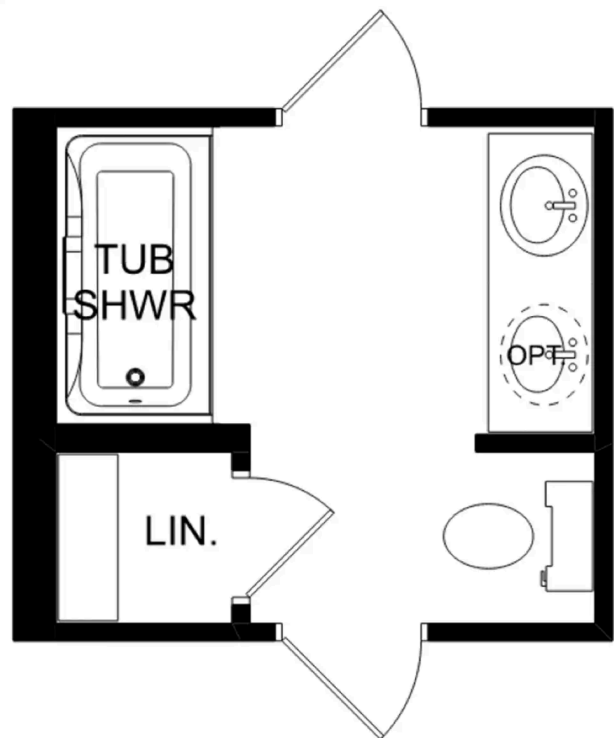
BATHS
2

SQ FT
1,484

PARKING
2



THE ASHEVILLE



THE ASHEVILLE OPTIONS

The Franklin

Exterior Options

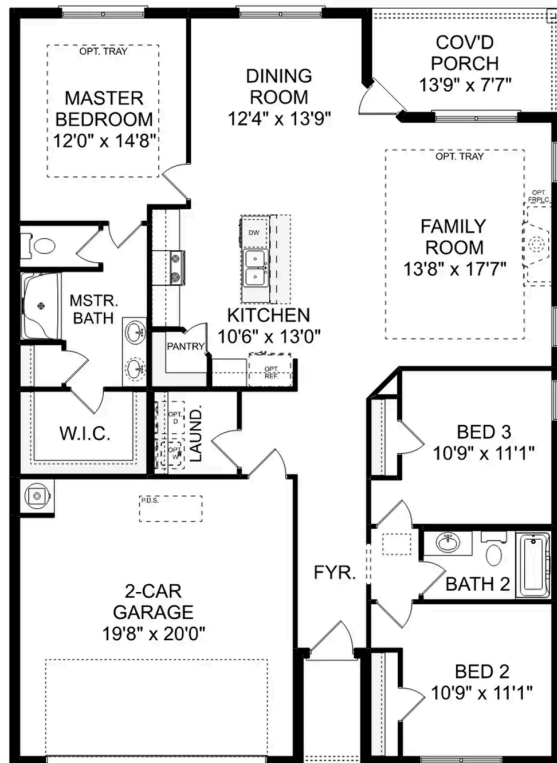


BEDS
3

BATHS
2

SQ FT
1,620

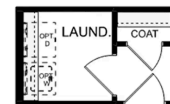
PARKING
2



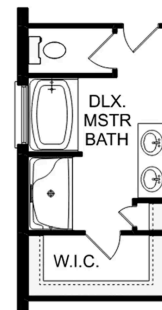
THE FRANKLIN



OPT. DROP ZONE



OPT. COAT CLOSET



OPT. DELUXE MASTER BATH

THE FRANKLIN OPTIONS

The Daphne

Exterior Options

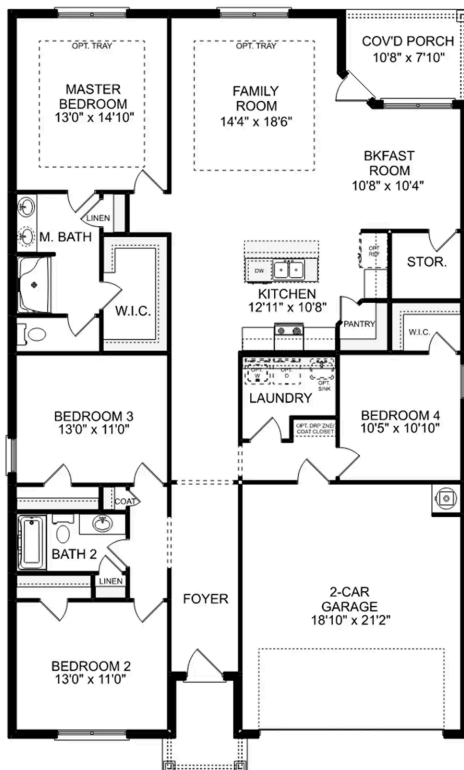


BEDS
4

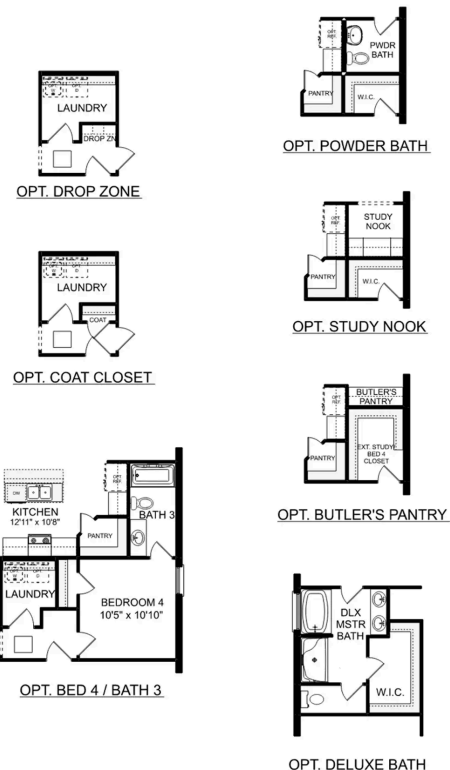
BATHS
2

SQ FT
1,964

PARKING
2



THE DAPHNE



THE DAPHNE OPTIONS



Wood Trail in Toney, AL

Call (256) 368-0063
DAVIDSONHOMES.COM

The Everett

Exterior Options

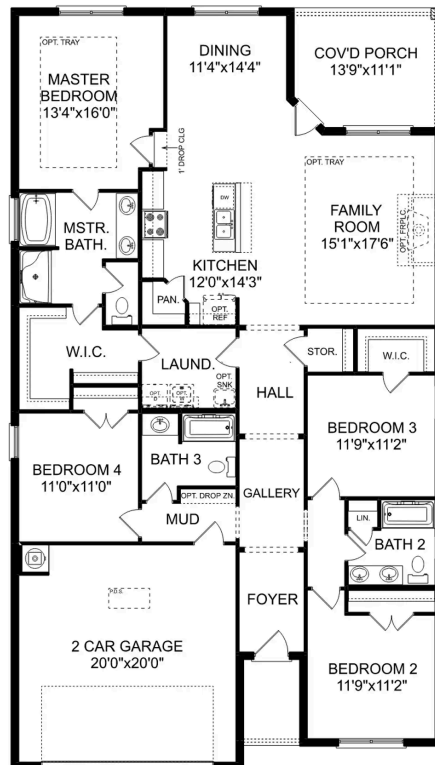


BEDS
4

BATHS
3

SQ FT
2,136

PARKING
2



THE EVERETT



The Shelby A

Exterior Options

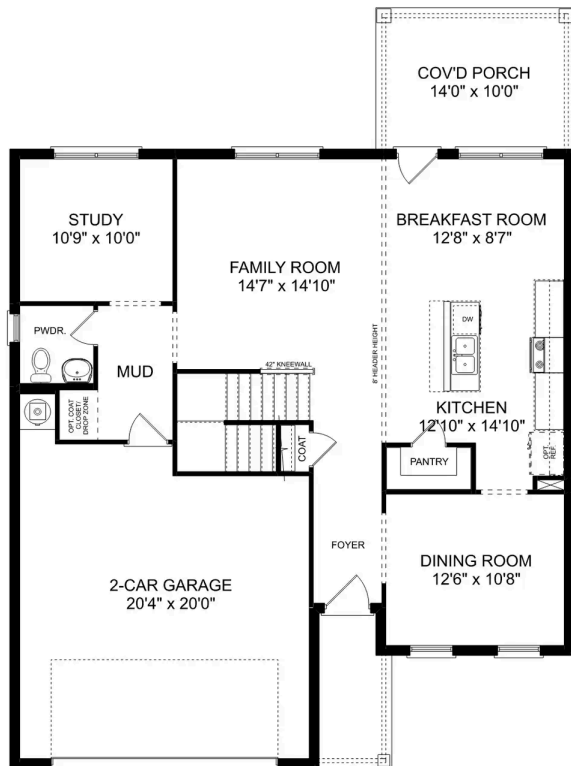


BEDS
3

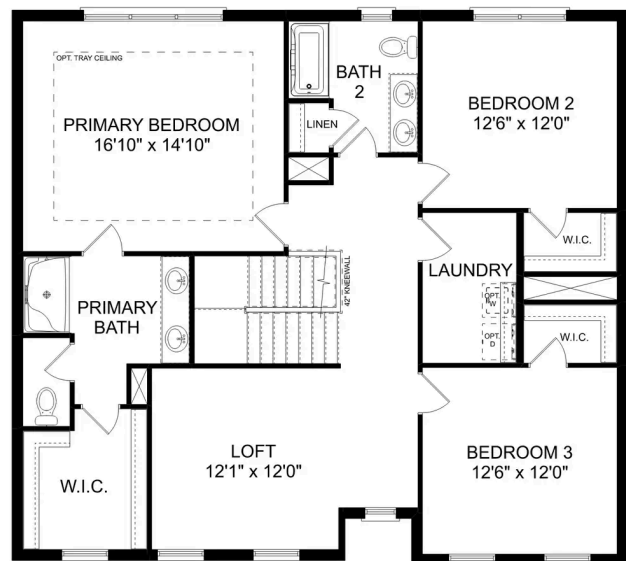
BATHS
2.5

SQ FT
2,452

PARKING
2



MAIN FLOOR



UPPER FLOOR

The Shelby A

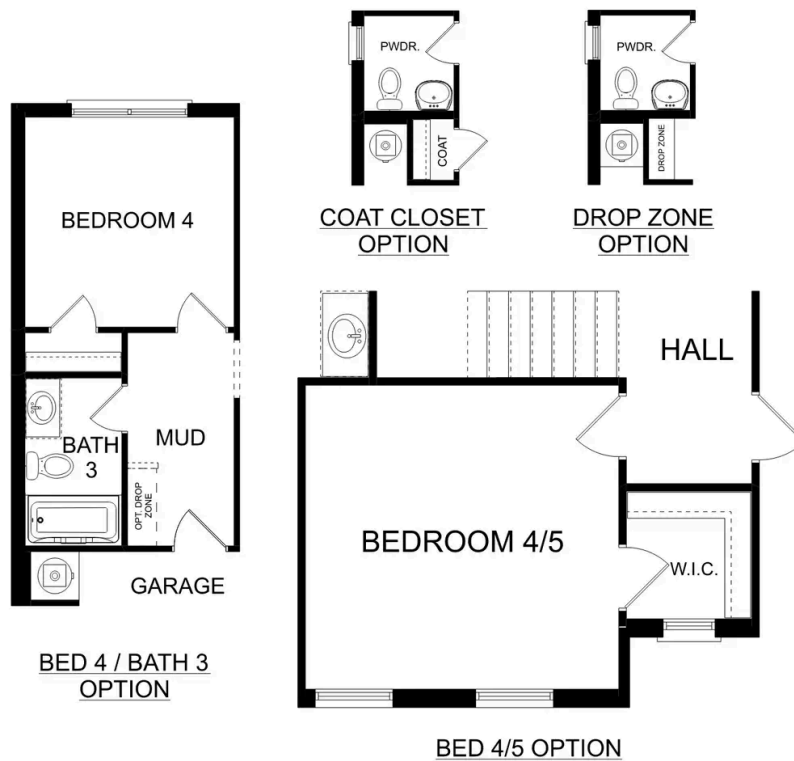
The Shelby welcomes you into a modern, open space, complete with a formal dining room and study. The kitchen overlooks an open-concept family room. The second floor features a spacious master bedroom with a large walk-in closet and master bath along with two additional bedrooms with ample walk-in closets of their own.

BEDS
3

BATHS
2.5

SQ FT
2,452

GARAGE
2



PLAN OPTIONS

The Charleston D

Exterior Options

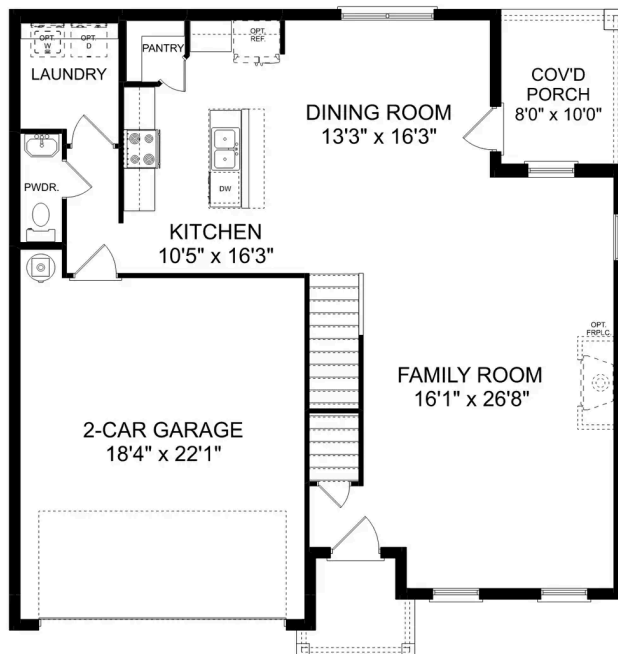


BEDS
4

BATHS
2.5

SQ FT
2,505

PARKING
2



THE CHARLESTON D MAIN FLOOR



THE CHARLESTON D UPPER FLOOR

The Charleston D

The sky's the limit with The Charleston's two-story layout and massive bonus room. Inside the home's brick exterior, the open-concept kitchen overlooks the huge family room. The Master Suite offers you a personal retreat – complete with large walk-in closet. Whether you're looking for a game room or a fifth bedroom, the upstairs bonus room gives you all the flexibility you need. Make it your own with The Charleston's flexible floor plan! Just know that offerings vary by location, so please discuss our standard features and upgrade options with your community's agent.

BEDS
4

BATHS
2.5

SQ FT
2,505

GARAGE
2



THE CHARLESTON D OPTIONS

The Chelsea A

Exterior Options

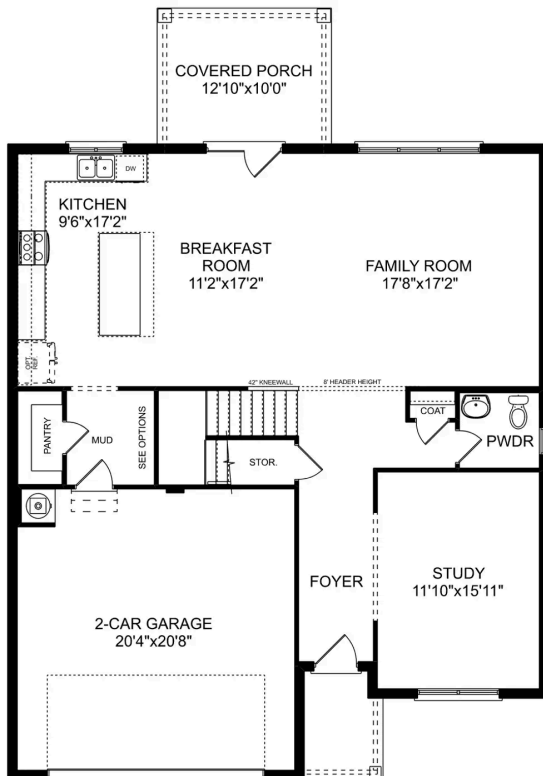


BEDS
4

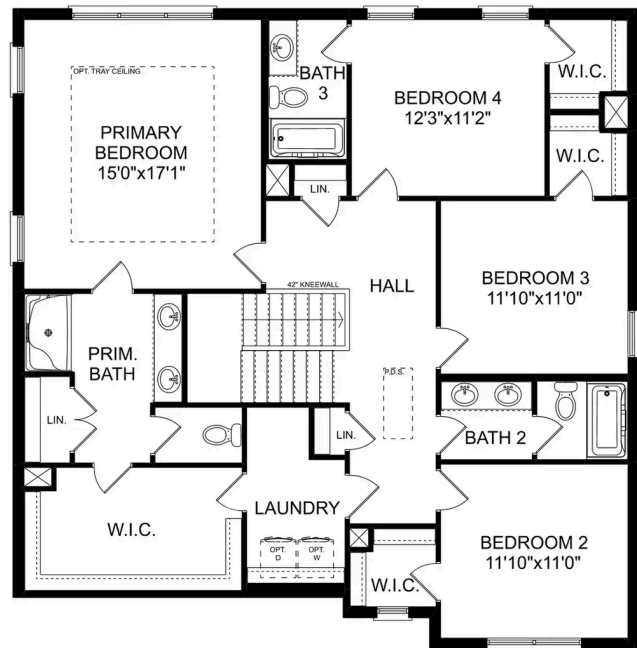
BATHS
3.5

SQ FT
2,769

PARKING
2



MAIN FLOOR



UPPER FLOOR

The Chelsea A

The Chelsea's windows fill the open floor plan with natural light, welcoming you into this charming home. The kitchen showcases ample counterspace, overlooking the breakfast and family room. A large study on the first floor offers potential, and the home's second floor features four bedrooms, each with plenty of closet space. The master bedroom is separate from the other bedrooms for added privacy, and the fourth bedroom features its own private bath.

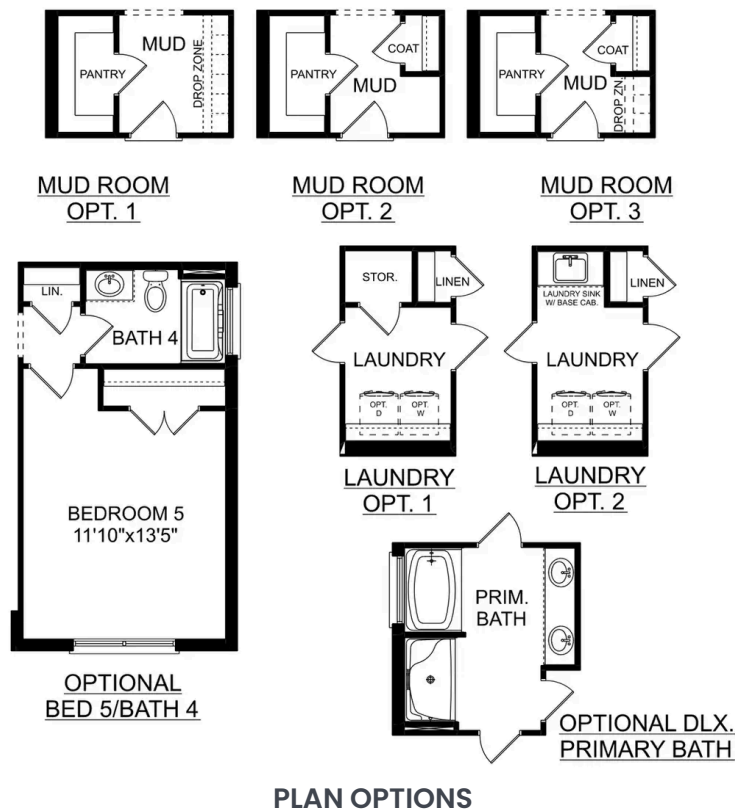
Make it your own with The Chelsea's flexible floor plan. Offerings vary by location, so please discuss your options with your community's agent.

BEDS
4

BATHS
3.5

SQ FT
2,769

GARAGE
2



The Richmond D

Exterior Options

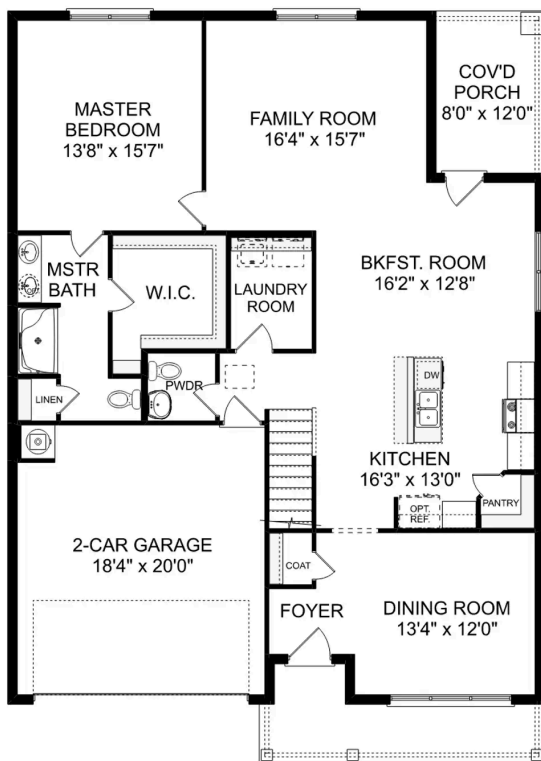


BEDS
5

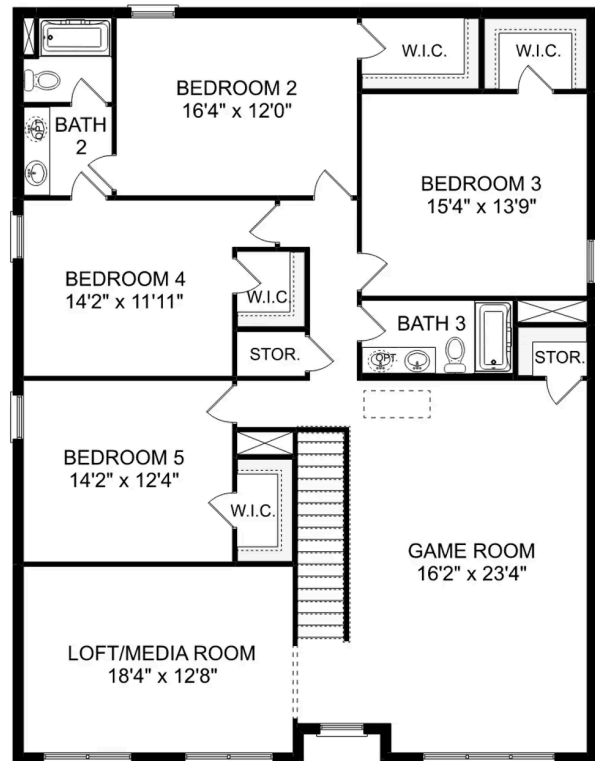
BATHS
3.5

SQ FT
3,537

PARKING
2



THE RICHMOND D MAIN FLOOR



THE RICHMOND D UPPER FLOOR

The Richmond D

Starring five bedrooms and plenty of space, The Richmond features a sprawling layout! Enter the foyer and discover the elegant dining room to the left. The home quickly expands into an open-concept living space, as the charming kitchen overlooks the breakfast nook and family room. Continue through to the Master Suite, featuring a huge walk-in closet.

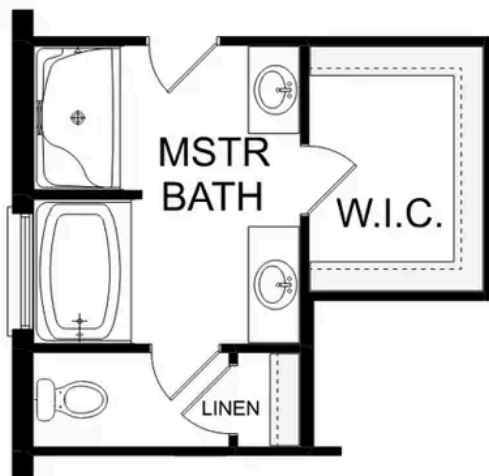
Upstairs, the plan features four more bedrooms, in addition to a game room and media room. Whether you're looking for a home theater or a home gym, The Richmond offers all the space you need.

BEDS
5

BATHS
3.5

SQ FT
3,537

GARAGE
2



OPTIONAL DELUXE
MASTER BATH



OPTIONAL
MEDIA ROOM

THE RICHMOND D OPTIONS

The Savannah C



Description

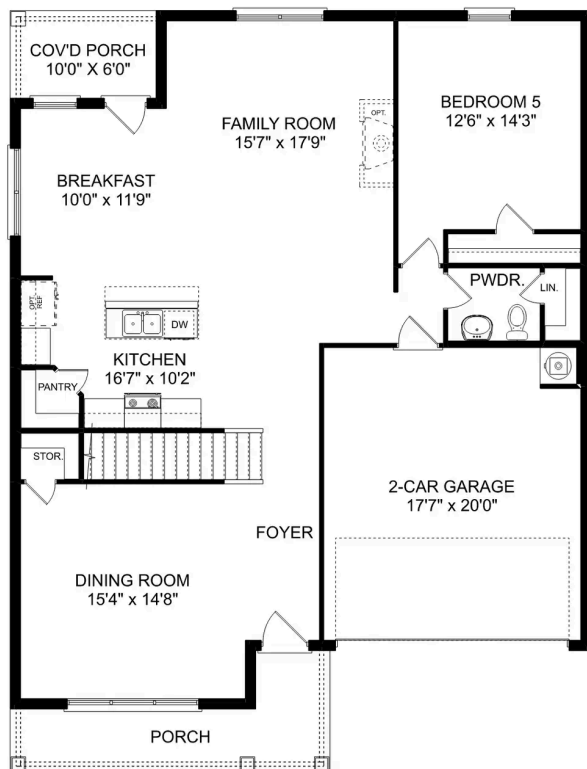
This home has it all. A fantastic value, The Savannah's open-concept floor plan is state-of-the-art. The kitchen is fully stocked with stainless-steel appliances, gorgeous countertops and a walk-in pantry, while the family room is perfect for entertaining.

BEDS
5

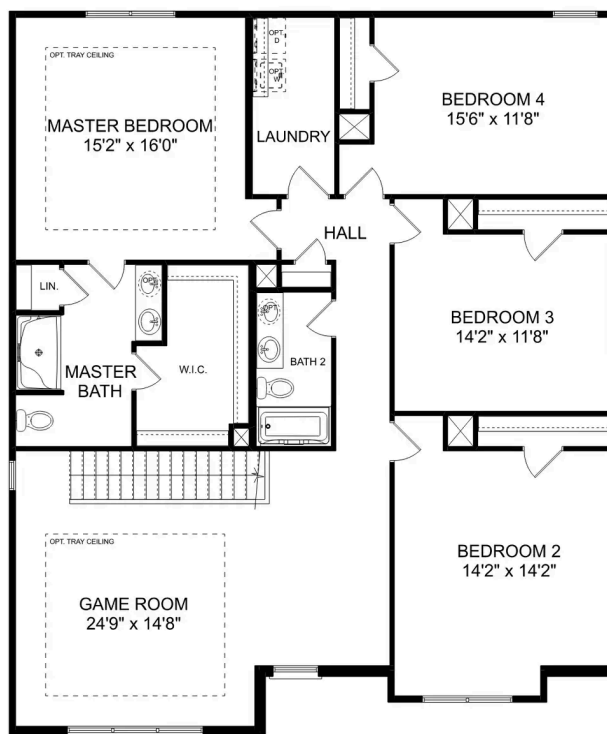
BATHS
2.5

SQ FT
3,167

PARKING
2



THE SAVANNAH C MAIN FLOOR



THE SAVANNAH C UPPER FLOOR

The Savannah C

This home has it all. A fantastic value, The Savannah's open-concept floor plan is state-of-the-art. The kitchen is fully stocked with stainless-steel appliances, gorgeous countertops and a walk-in pantry, while the family room is perfect for entertaining. Four upstairs bedrooms offer a sense of space and security, and an optional fifth bedroom on the first floor makes it perfect for multi-generational families.

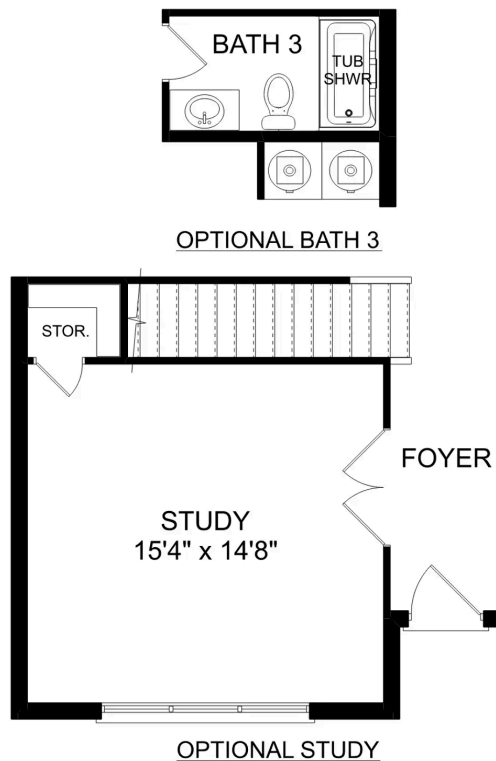
The massive, upstairs game room offers plenty of flex-space, and the covered porch offers a quiet escape from the action. Make it your own with The Savannah's flexible floor plan: from an additional bathroom to a new study, it's your choice. Just know that offerings vary by location, so please discuss our... standard features and upgrade options with your community's agent.

BEDS
5

BATHS
2.5

SQ FT
3,167

GARAGE
2



THE SAVANNAH C OPTIONS