

# Barnett's Crossing

Davidson Homes in Madison, AL

Welcome to Madison, Alabama—a perfect blend of historical charm and modern convenience. Davidson Homes is proud to showcase Barnett's Crossing, a versatile community ideal for anyone—from families just starting out to those looking for a peaceful retirement setting.

Strategically situated near Redstone Arsenal, Huntsville International Airport, and Mid-City, Madison offers everything from career opportunities to top-tier schools and a dynamic social scene.

## Features

Easy Access to I-565  
Multi-Generational Living  
Active Adult Community

## Local Schools

Midtown Elementary  
Journey Middle  
James Clemens High

## Utilities

Electric: Athens Utilities  
Water: Limestone County ...  
Gas: North Alabama Gas



Community Address

36 Ginsberg Rd

New Homes

07

Floor Plans

14

Homes from the

\$320s

Copyright 2024 Davidson Homes, Inc. | All Rights Reserved | Davidson Homes is a leading builder of quality new homes across the Southeast. Davidson Homes reserves the right to adjust items listed without prior notice or obligation. Such items may include, but are not limited to, options, included features and community information, pricing, amenities, square footage, terms or availability. Features, options, floor plans, elevations, colors, dimensions and photographs are for illustration purposes and may vary from homes built. Please see your community specialist for details. Equal housing lender. Last Updated 05/20/2024.





## Barnett's Crossing in Madison, AL

# Quick Move-In Homes

Michael McCormick  
Call (256) 664-4404



UPDATED  
05/20/2024

HOMES  
07

COMMUNITY ADDRESS  
36 Ginsberg Rd



~~\$329,900~~ **\$319,900**

2 Beds 2 Baths 1,484 Sq Ft

106 Atkinson Alley | #111  
The Copeland C Plan



~~\$351,735~~ **\$339,900**

2 Beds 2 Baths 1,484 Sq Ft

104 Atkinson Alley | #112  
The Copeland B Plan



~~\$368,021~~ **\$359,900**

2 Beds 2 Baths 1,797 Sq Ft

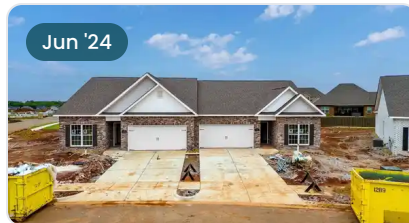
110 Atkinson Alley | #110  
The Copeland D Plan



~~\$367,120~~ **\$359,900**

2 Beds 2 Baths 1,851 Sq Ft

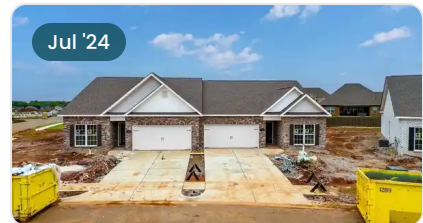
100 Atkinson Alley | #113  
The Copeland Plan



~~\$349,900~~ **\$334,900**

3 Beds 2 Baths 1,762 Sq Ft

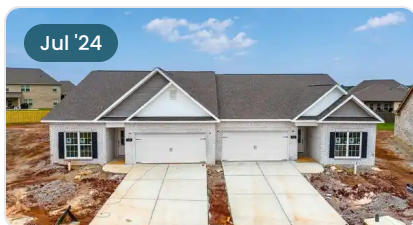
128 Calpurnia Court | #68  
The Cottonwood Plan



~~\$344,900~~ **\$329,900**

2 Beds 2 Baths 1,719 Sq Ft

126 Calpurnia Court | #69  
The Rosewood Plan



**\$339,900**

2 Beds 2 Baths 1,719 Sq Ft

122 Calpurnia Court | #71  
The Rosewood Plan



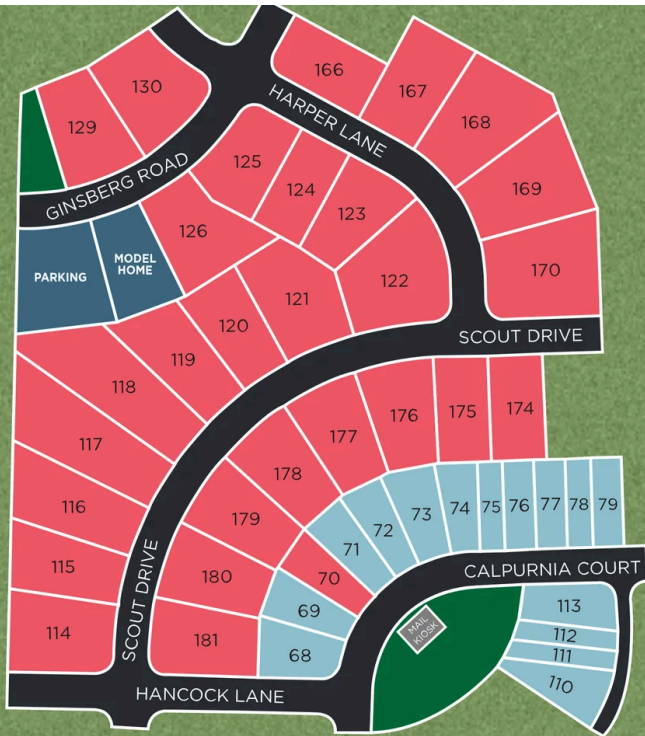




Barnett's Crossing in Madison, AL

# Community Homesite Map

Michael McCormick  
Call (256) 664-4404



## BARNETT'S CROSSING

Madison, Alabama



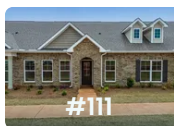
QUICK MOVE-IN

COMING SOON

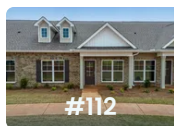
AVAILABLE

SOLD

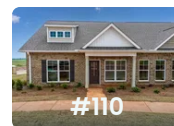
## Featured Homes for Sale



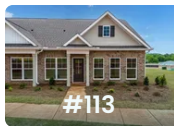
**The Copeland C**  
106 Atkinson Alley  
**\$319,900**



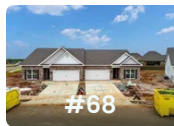
**The Copeland B**  
104 Atkinson Alley  
**\$339,900**



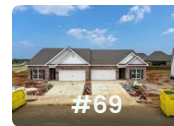
**The Copeland D**  
110 Atkinson Alley  
**\$359,900**



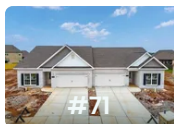
**The Copeland**  
100 Atkinson Alley  
**\$359,900**



**The Cottonwood**  
128 Calpurnia Court  
**\$334,900**



**The Rosewood**  
126 Calpurnia Court  
**\$329,900**



**The Rosewood**  
122 Calpurnia Court  
**\$339,900**





Barnett's Crossing in Madison, AL

Call (256) 664-4404  
DAVIDSONHOMES.COM

## The Cottonwood



### Description

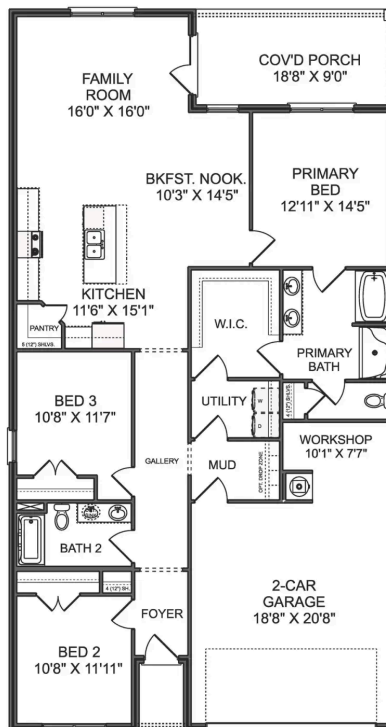
Welcome to The Cottonwood, a spacious and modern single-unit duplex offering 3 bedrooms, 2 baths, and a 2-car garage, all within a generous 1,762 square feet. This well-designed home features an open-concept living space, perfect for daily living and entertaining.

**BEDS**  
**3**

**BATHS**  
**2**

**SQ FT**  
**1,762**

**PARKING**  
**2**



**THE COTTONWOOD DUPLEX**







Barnett's Crossing in Madison, AL

Call (256) 664-4404  
DAVIDSONHOMES.COM

## The Rosewood



### Description

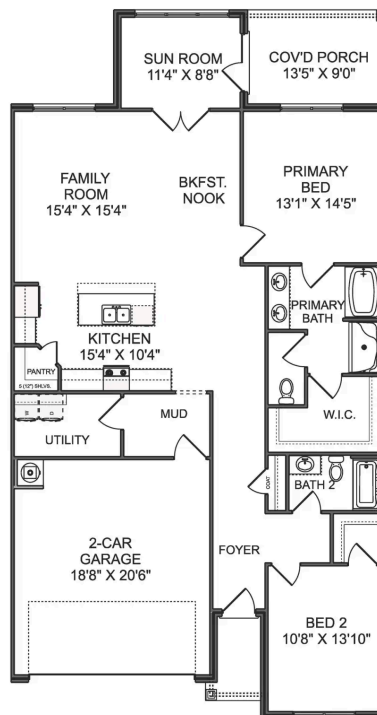
Welcome to The Rosewood, an elegant single-unit duplex featuring 2 bedrooms, 2 bathrooms, a 2-car garage, and 1,718 square feet of living space. Inside, you'll find an inviting open-concept living area with ample natural light, a modern kitchen, and a comfortable master bedroom with an en-suite...

BEDS  
**2**

BATHS  
**2**

SQ FT  
**1,718**

PARKING  
**2**



THE ROSEWOOD DUPLEX



# The Copeland



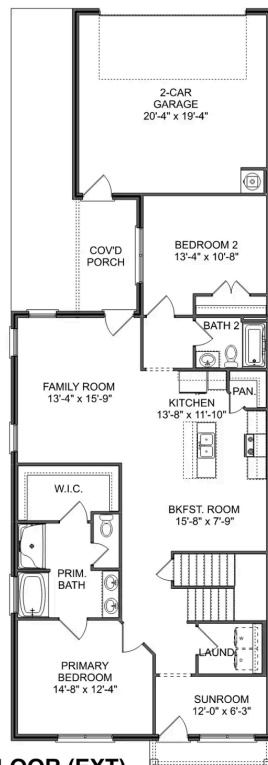
**BEDS**  
**2**

**BATHS**  
**2**

**SQ FT**  
**1,851**

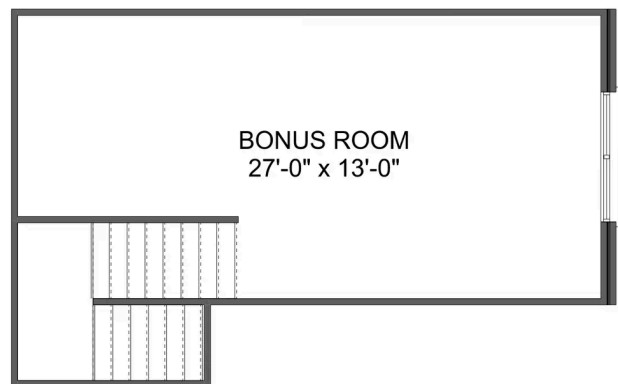
**PARKING**  
**2**

## Exterior Options



**COPELAND A MAIN FLOOR (EXT)**

**THE COPELAND A MAIN FLOOR**



**THE COPELAND A UPPER FLOOR**



# The Montgomery

## Exterior Options

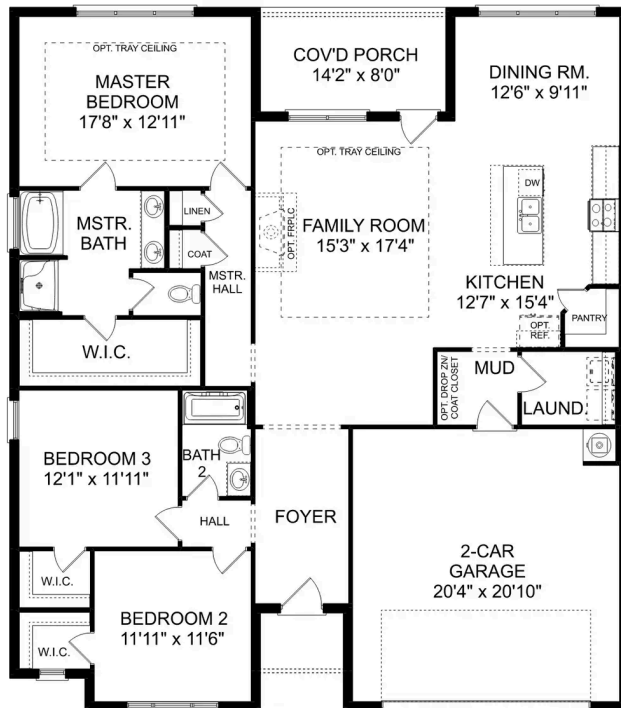


**BEDS**  
**3**

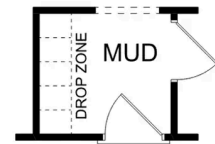
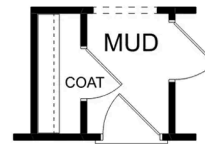
**BATHS**  
**2**

**SQ FT**  
**1,912**

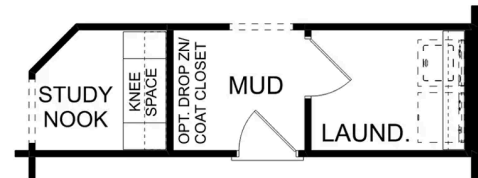
**PARKING**  
**2**



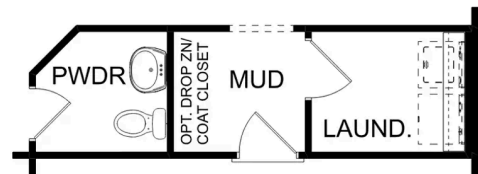
**THE MONTGOMERY**



OPT. COAT CLOSET OR DROP ZONE



OPT. STUDY NOOK



OPT. POWDER BATH

**THE MONTGOMERY OPTIONS**

# The Montgomery with Bo...

## Exterior Options

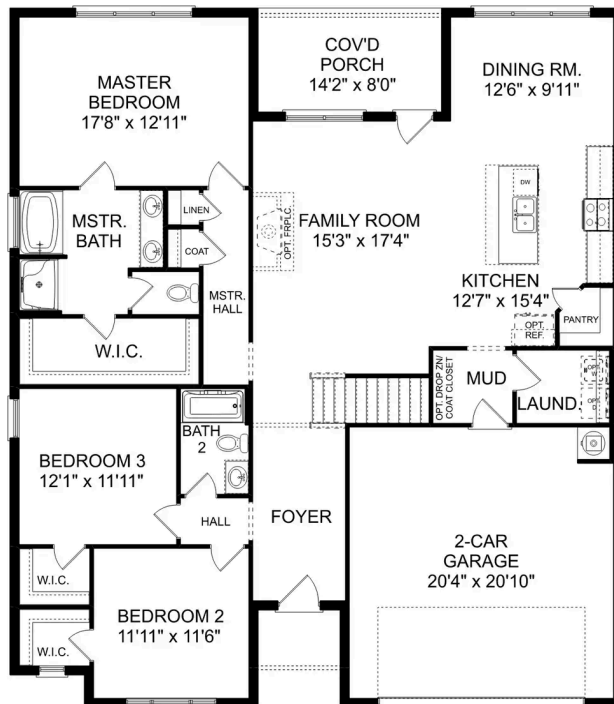


**BEDS**  
**3**

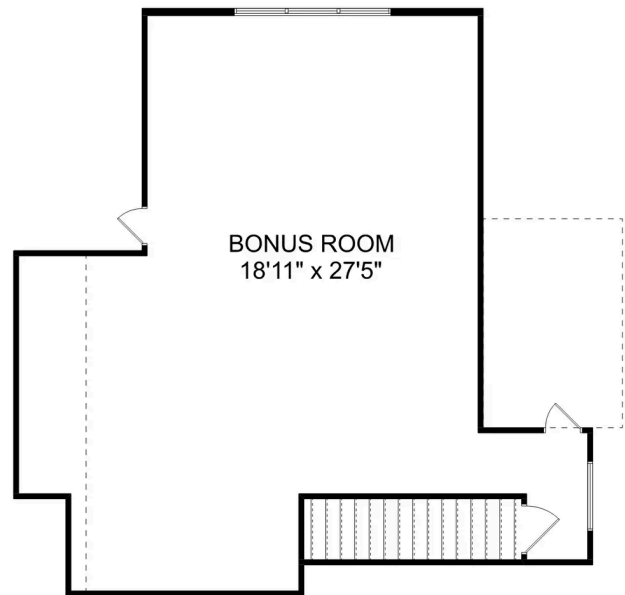
**BATHS**  
**2**

**SQ FT**  
**2,684**

**PARKING**  
**2**



**THE MONTGOMERY BONUS MAIN FLOOR**



**THE MONTGOMERY BONUS UPPER FLOOR**



## The Montgomery with Bonus

With modern touches like an open-concept, homeowner-centric layout, The Montgomery is one-level living at its finest. The kitchen showcases a huge island, corner pantry and stainless-steel appliances. The plan's open family room is perfect for entertaining guests, and the covered porch is easily accessible. Discover the plan's impressive Master Suite, complete with bright, inviting windows and a huge walk-in closet.

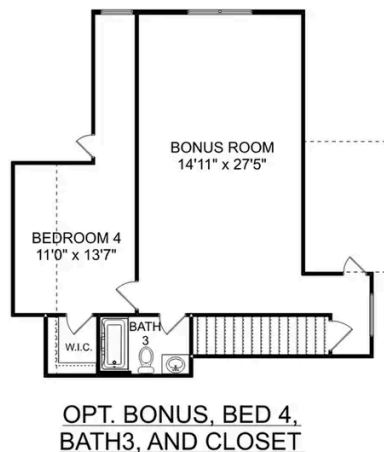
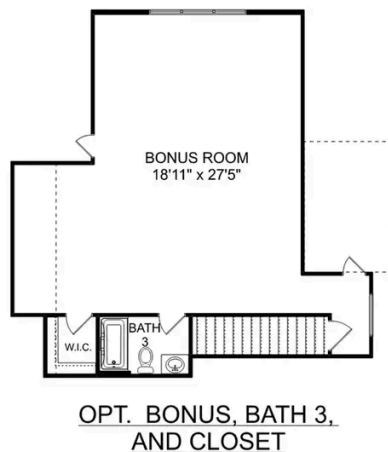
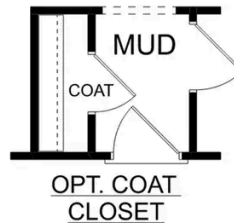
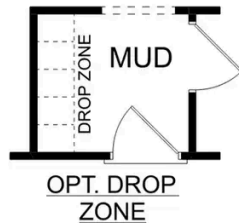
Make it your own with The Montgomery's flexible floor plan, featuring an optional bonus room, a covered porch and more! Just know that offerings vary by location, so please discuss our standard features and upgrade options with your community's agent.

BEDS  
**3**

BATHS  
**2**

SQ FT  
**2,684**

GARAGE  
**2**



### THE MONTGOMERY BONUS OPTIONS

# The Kirkland



## Description

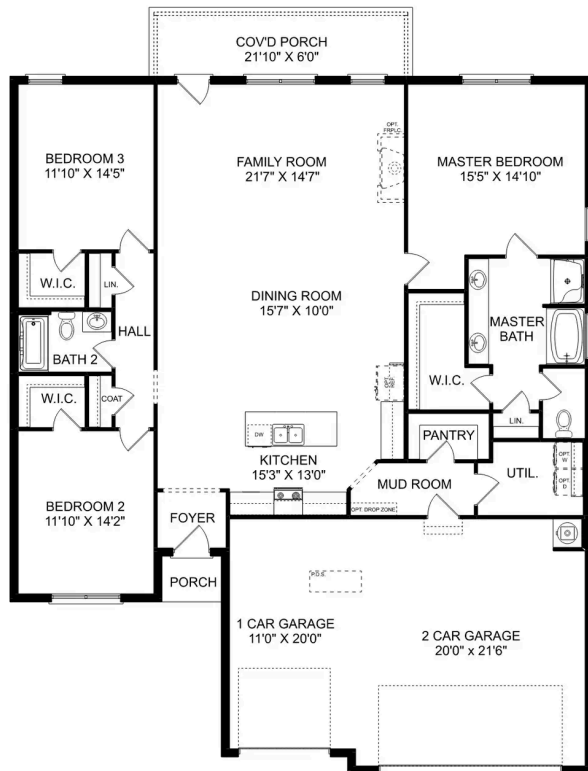
Behind the Kirkland's lovely, full-brick exterior lies a beautiful home. The foyer immediately opens up into a stunning, open-concept living space, combining the dining room, family room and kitchen.

**BEDS**  
**3**

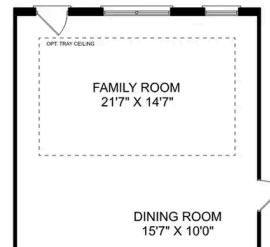
**BATHS**  
**2**

**SQ FT**  
**2,076**

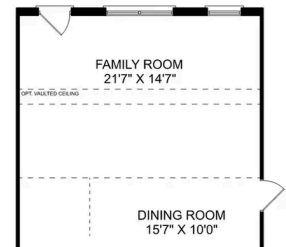
**PARKING**  
**3**



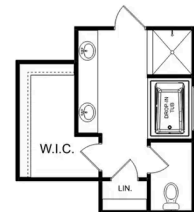
**THE KIRKLAND**



**OPTIONAL TRAY  
CEILING**



**OPTIONAL VAULTED  
CEILING**



**OPTIONAL LUXURY  
MASTER BATH**

**THE KIRKLAND OPTIONS**



# The Kirkland with Bonus



## Description

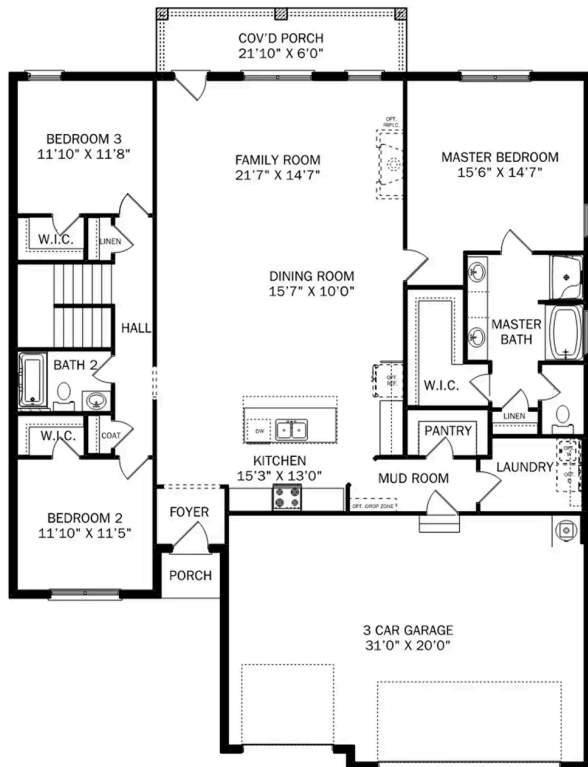
Behind the Kirkland's lovely, full-brick exterior lies a beautiful home. The foyer immediately opens up into a stunning, open-concept living space, combining the dining room, family room and kitchen.

**BEDS**  
**3**

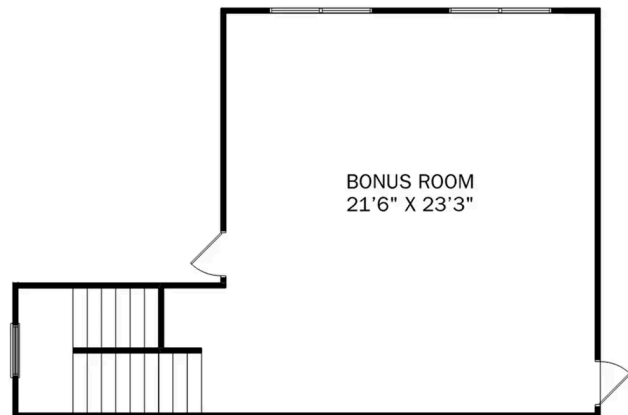
**BATHS**  
**2**

**SQ FT**  
**2,767**

**PARKING**  
**3**



THE KIRKLAND BONUS MAIN FLOOR



THE KIRKLAND BONUS UPPER FLOOR

## The Kirkland with Bonus

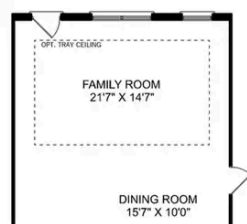
Behind the Kirkland's lovely, full-brick exterior lies a beautiful home. The foyer immediately opens up into a stunning, open-concept living space, combining the dining room, family room and kitchen. From the stunning island to its endless counterspace, the kitchen is perfect for entertaining, and the covered porch is always ready to take the party outside. The Master Suite features a lovely, bright bedroom and Master Bath, complete with shower, bathtub and walk-in closet.

BEDS  
**3**

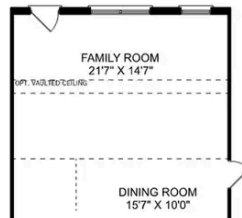
BATHS  
**2**

SQ FT  
**2,767**

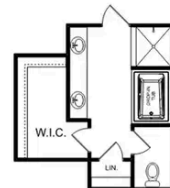
GARAGE  
**3**



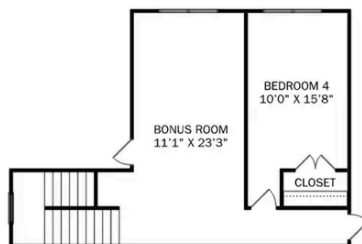
OPTIONAL TRAY  
CEILING



OPTIONAL VAULTED  
CEILING



OPTIONAL LUXURY  
MASTER BATH



OPTIONAL BEDROOM 5



OPTIONAL BATH 3

### THE KIRKLAND BONUS OPTIONS



# The Rockford

## Exterior Options

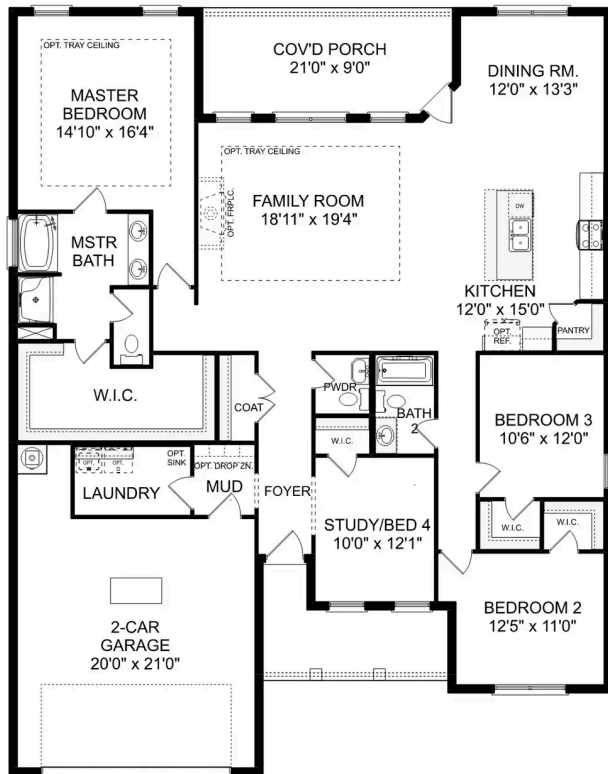


**BEDS**  
**3**

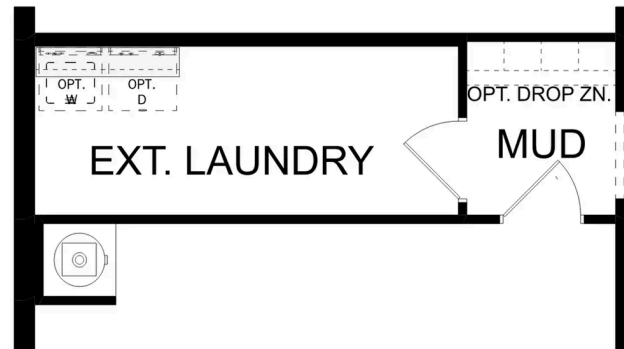
**BATHS**  
**2.5**

**SQ FT**  
**2,286**

**PARKING**  
**2**



**THE ROCKFORD**



OPT. EXTENDED LAUNDRY  
ADDS 30 HEATED S.F.

**THE ROCKFORD OPTIONS**

# The Rockford with Bonus

## Exterior Options

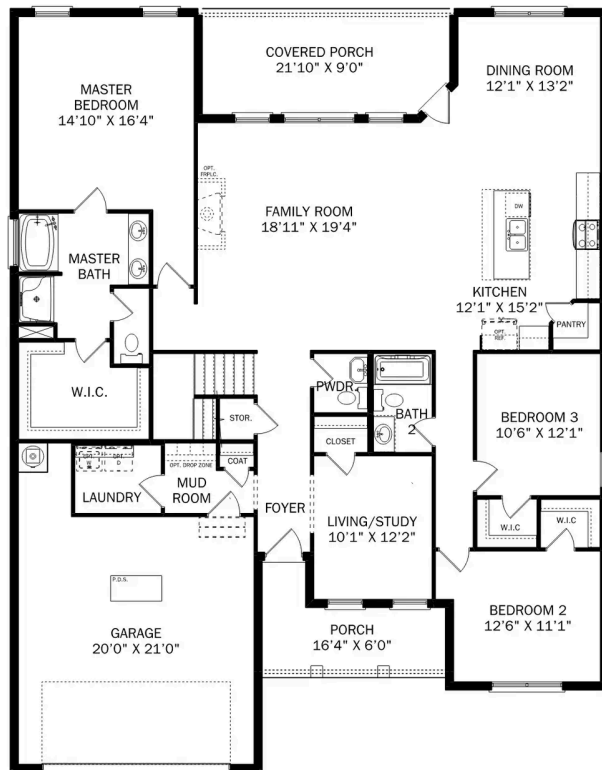


**BEDS**  
**3**

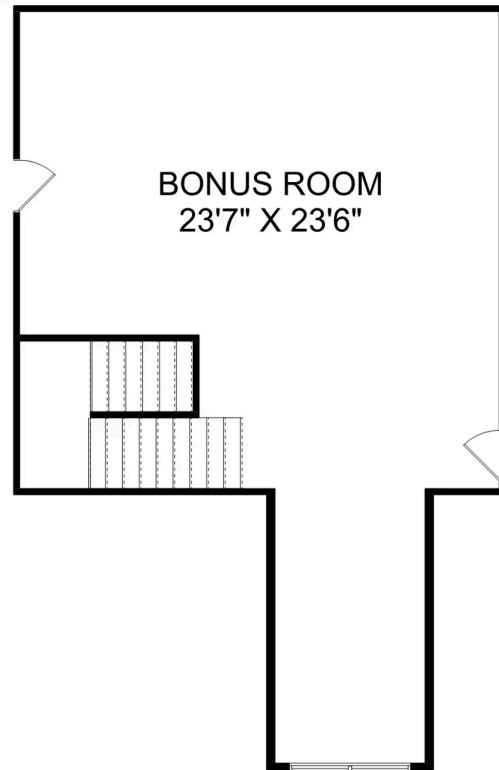
**BATHS**  
**2.5**

**SQ FT**  
**2,904**

**PARKING**  
**2**



THE ROCKFORD BONUS MAIN FLOOR



THE ROCKFORD BONUS UPPER FLOOR

## The Rockford with Bonus

With its charming, full-brick exterior, it's no wonder why The Rockford's our best-selling floor plan! A wall of windows floods the family room with natural light, and the kitchen invites you to cook – welcoming you with an oversized island, stainless-steel appliances and a large corner pantry. The isolated Master Suite features plenty of room and a massive walk-in closet.

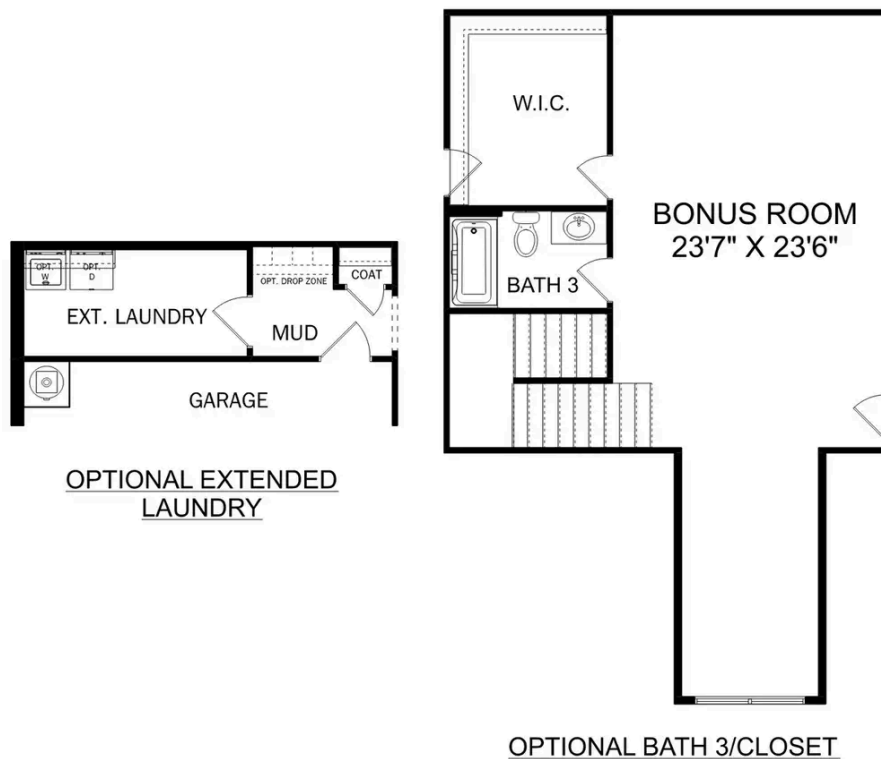
Make it your own with The Rockford's flexible floor plan, and consider replacing the home office with a fourth bedroom. It's your choice. Just know that offerings vary by location, so please discuss our standard features and upgrade options with your community's agent.

BEDS  
**3**

BATHS  
**2.5**

SQ FT  
**2,904**

GARAGE  
**2**



**THE ROCKFORD OPTIONS**



# The Madison A

## Exterior Options

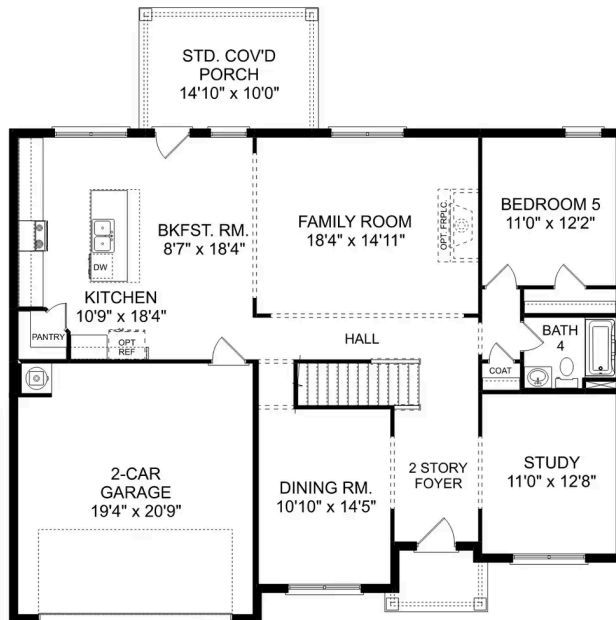


**BEDS**  
**5**

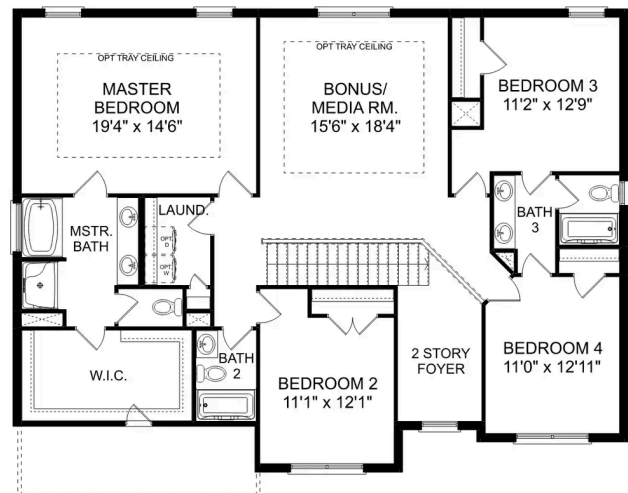
**BATHS**  
**4**

**SQ FT**  
**3,199**

**PARKING**  
**2**



THE MADISON MAIN FLOOR



THE MADISON UPPER FLOOR

## The Madison A

Behind the Madison's gorgeous brick exterior lies a massive layout, featuring five bedrooms, an elegant dining room and a welcoming study. From the designer kitchen's stainless-steel appliances to its oversized island, you'll want to make all your meals at home. The upstairs bonus room is perfect for family movie nights, and the Master Suite features a huge walk-in closet!

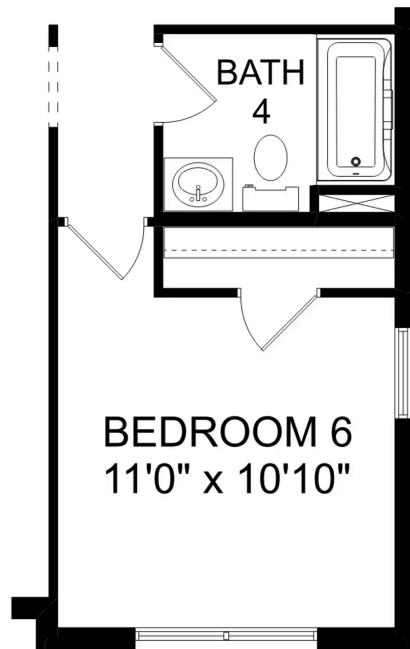
Make it your own with The Madison's flexible floor plan. Just know that offerings vary by location, so please discuss our standard features and upgrade options with your community's agent.

BEDS  
**5**

BATHS  
**4**

SQ FT  
**3,199**

GARAGE  
**2**



### OPT. BEDROOM 6

#### THE MADISON OPTIONS

# The Lanier



## Description

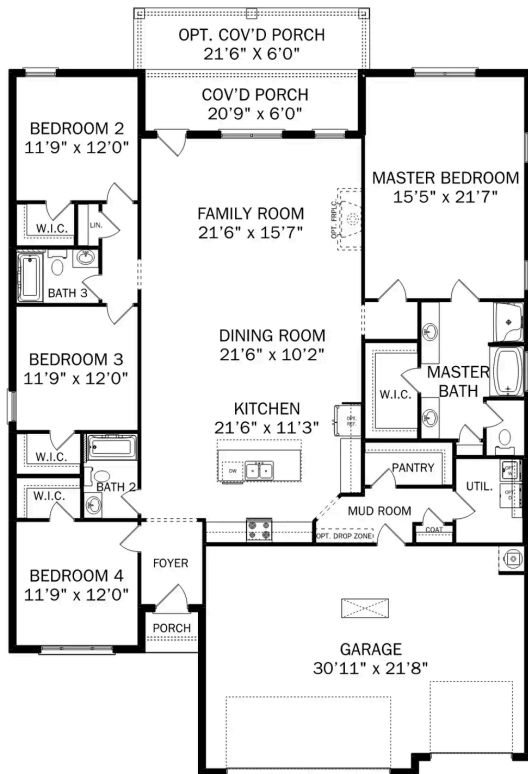
Within The Lanier's charming, full-brick exterior lies four bedrooms and plenty of space. The three-car garage leads into the home's mud room. The kitchen features a large pantry, double-sided island and more than enough counter space. Once there you'll discover the home's biggest feature – the huge, open-concept layout.

**BEDS**  
**4**

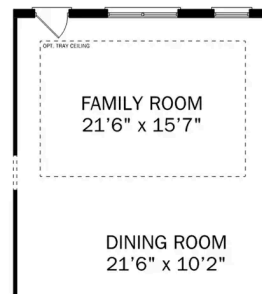
**BATHS**  
**3**

**SQ FT**  
**2,411**

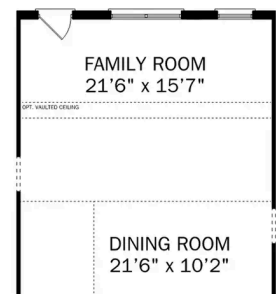
**PARKING**  
**3**



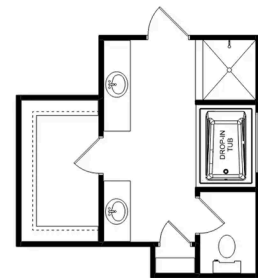
**THE LANIER**



**OPTIONAL TRAY  
CEILING**



**OPTIONAL VAULTED  
CEILING**



**OPTIONAL LUXURY  
MASTER BATH**

**THE LANIER OPTIONS**



# The Harrison

## Exterior Options

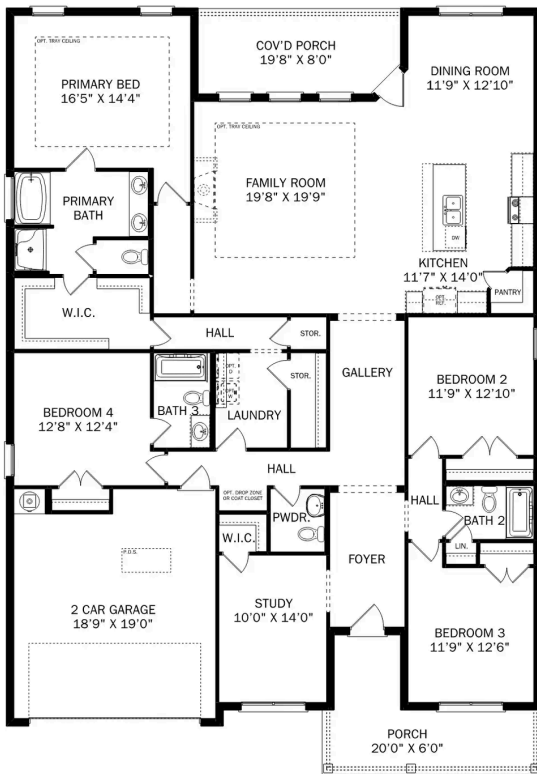


**BEDS**  
**4**

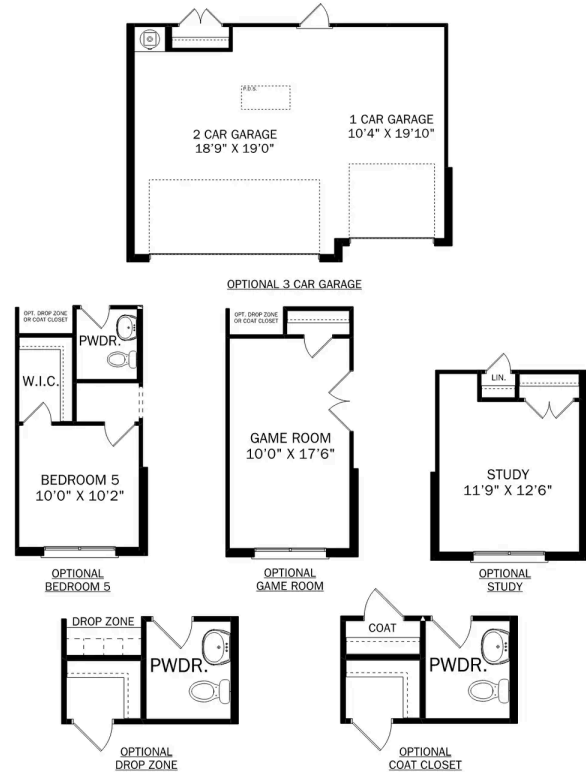
**BATHS**  
**3.5**

**SQ FT**  
**2,678**

**PARKING**  
**2**



**THE HARRISON**



**THE HARRISON OPTIONS**

# The Harrison with Bonus



## Description

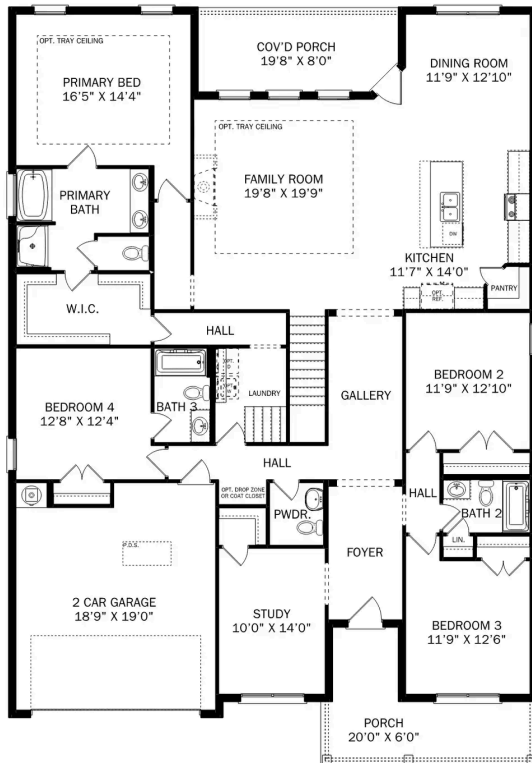
From its charming brick exterior to its open-concept kitchen/family room, The Harrison is perfect for entertaining. Its large kitchen island invites guests to pull up a chair, and its four spacious bedrooms ensure everyone has enough room.

**BEDS**  
**4**

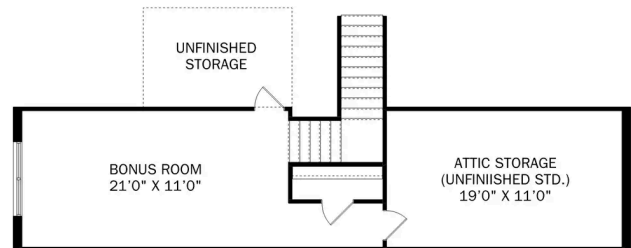
**BATHS**  
**3.5**

**SQ FT**  
**2,992**

**PARKING**  
**2**



**THE HARRISON BONUS MAIN FLOOR**



**THE HARRISON BONUS UPPER FLOOR**

## The Harrison with Bonus

From its charming brick exterior to its open-concept kitchen/family room, The Harrison is perfect for entertaining. Its large kitchen island invites guests to pull up a chair, and its four spacious bedrooms ensure everyone has enough room. The downstairs study offers a brief respite from the hustle and bustle, and the covered porch welcomes your family to grill and relax.

The Master Suite steals the show as its windows cast warm, natural light across the large room. The large walk-in closet is ready to handle your wardrobe, and the adjoining storage closet leads right into the laundry room – making laundry day significantly easier.

BEDS  
**4**

BATHS  
**3.5**

SQ FT  
**2,992**

GARAGE  
**2**



**THE HARRISON BONUS OPTIONS**





Barnett's Crossing in Madison, AL

Call (256) 664-4404  
DAVIDSONHOMES.COM

## The Emory



### Description

Enter The Emory, and you'll immediately discover why it's one of our most-loved plans. From its elegant dining room to its covered porch, this home has everything you need – and more! The designer kitchen features an oversized island, and the open-concept layout makes The Emory feel even larger.

BEDS  
**4**

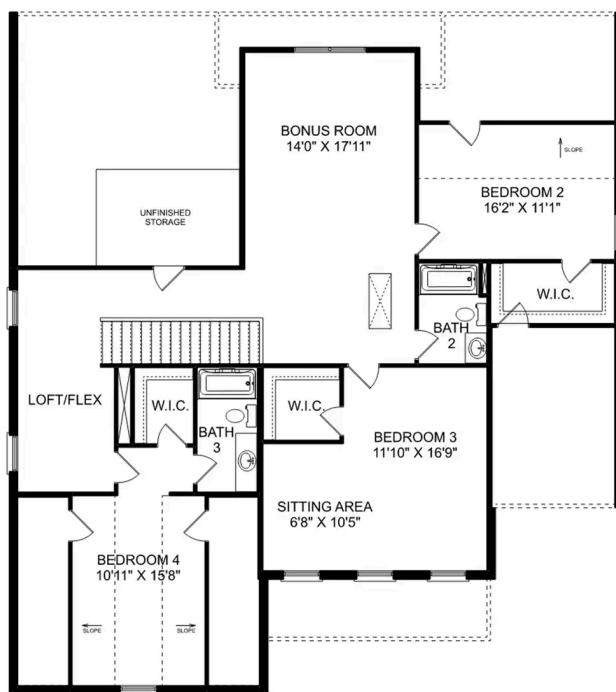
BATHS  
**3.5**

SQ FT  
**3,563**

PARKING  
**2**



THE EMORY MAIN FLOOR



THE EMORY UPPER FLOOR

