

# Bricewood

## Davidson Homes in San Antonio, TX

Welcome to Bricewood, a coming soon community by Davidson Homes. Nestled in the captivating heart of San Antonio, TX, our new homes in Bricewood offer a fusion of comfort, elegance, and convenience, along with thought-out amenities.

Showcasing a sweeping selection of beautiful designs and finishes, our new homes in Bricewood radiate the charm of Southern living. The community, imbued with the vibrant Texan spirit, compliments Davidson Homes' commitment to quality and style. Let Bricewood become the canvas for your dream home's story!

### Features

Pavilion  
Playground  
Walking Trails

### Local Schools

Kallison Elementary  
Folks Middle  
Sotomayor High  
Northside ISD

### Utilities

Electric: CPS  
Water: SAWS



### Community Address

10514 Briceway Club

### Floor Plans

04

### Homes from the

\$300s

Copyright 2024 Davidson Homes, Inc. | All Rights Reserved | Davidson Homes is a leading builder of quality new homes across the Southeast. Davidson Homes reserves the right to adjust items listed without prior notice or obligation. Such items may include, but are not limited to, options, included features and community information, pricing, amenities, square footage, terms or availability. Features, options, floor plans, elevations, colors, dimensions and photographs are for illustration purposes and may vary from homes built. Please see your community specialist for details. Equal housing lender. Last Updated 05/20/2024.





Bricewood in San Antonio, TX

# Community Homesite Map

Call (210) 405-1769



# The Asheville I

## Exterior Options

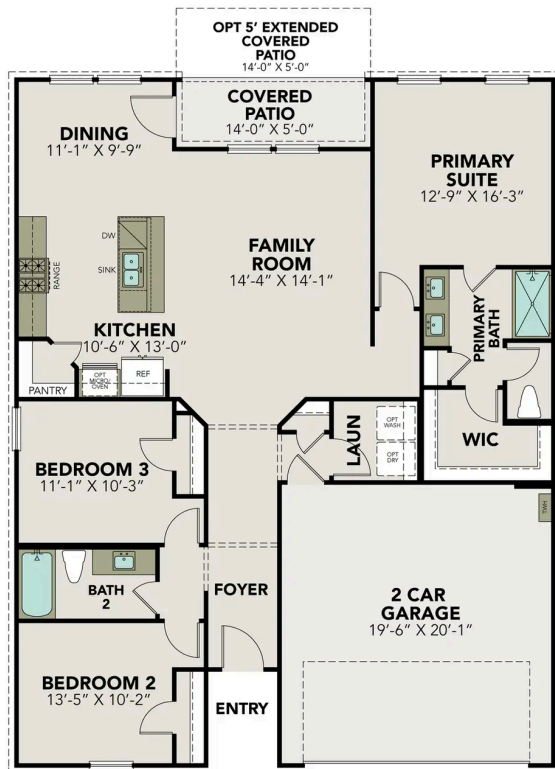


**BEDS**  
**3**

**BATHS**  
**2**

**SQ FT**  
**1,428**

**PARKING**  
**2**



**MAIN FLOOR PLAN**



**OPTIONS**



# The Daphne I

## Exterior Options

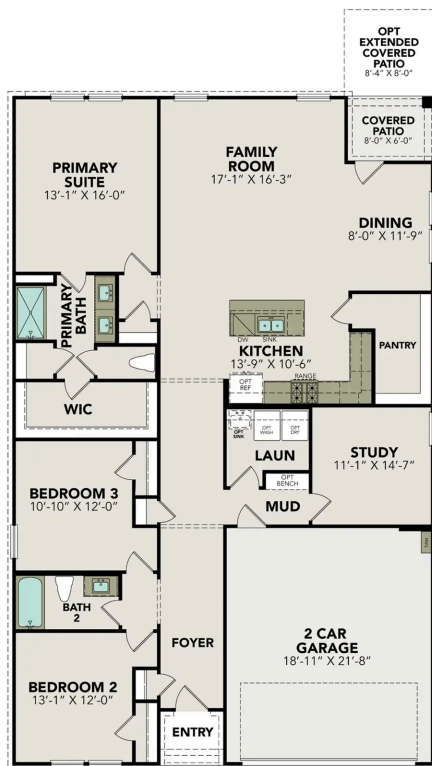


**BEDS**  
**3**

**BATHS**  
**2**

**SQ FT**  
**1,917**

**PARKING**  
**2**



**MAIN FLOOR PLAN**



**OPTIONS**



**OPT EXTENDED  
COVERED  
PATIO**

## The Murray I

### Exterior Options

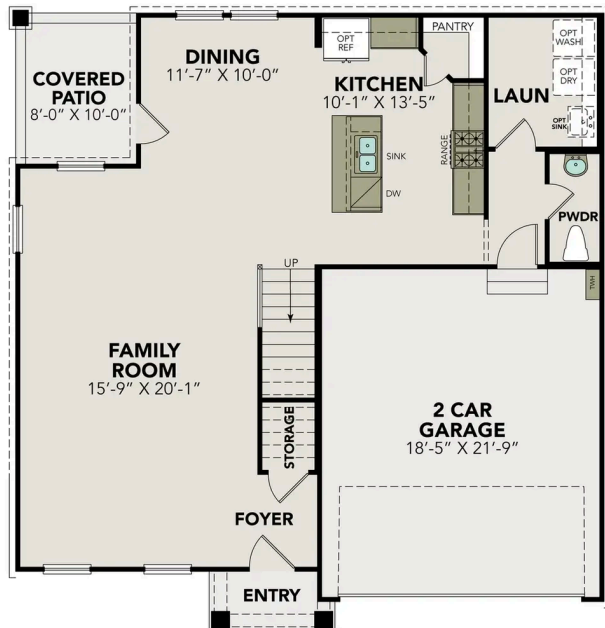


**BEDS**  
**4**

**BATHS**  
**2.5**

**SQ FT**  
**2,397**

**PARKING**  
**2**



MAIN FLOOR PLAN



UPPER FLOOR PLAN

## The Murray I

The Murray is a spacious two-story home that boasts an open-concept floor plan perfect for modern living. The main floor features a welcoming foyer that leads to a sprawling family room, which is bathed in natural light thanks to its large windows. The family room seamlessly flows into the dining area and kitchen, creating a perfect space for entertaining guests or spending quality time with loved ones. The second floor of The Murray is dedicated to rest and relaxation, featuring a spacious versatile game room, primary suite and three additional bedrooms.

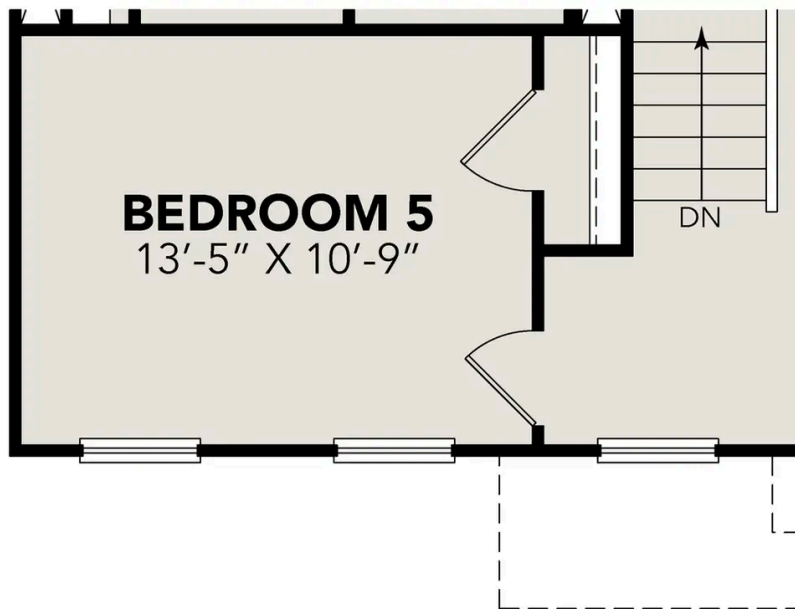
Make it your own with The Murray's flexible floor plan. Just know that offerings vary by location, so please discuss our standard features and upgrade options... with your community's agent.

BEDS  
**4**

BATHS  
**2.5**

SQ FT  
**2,397**

GARAGE  
**2**



### OPT BEDROOM 5

OPTIONS



# The Douglas E

## Exterior Options

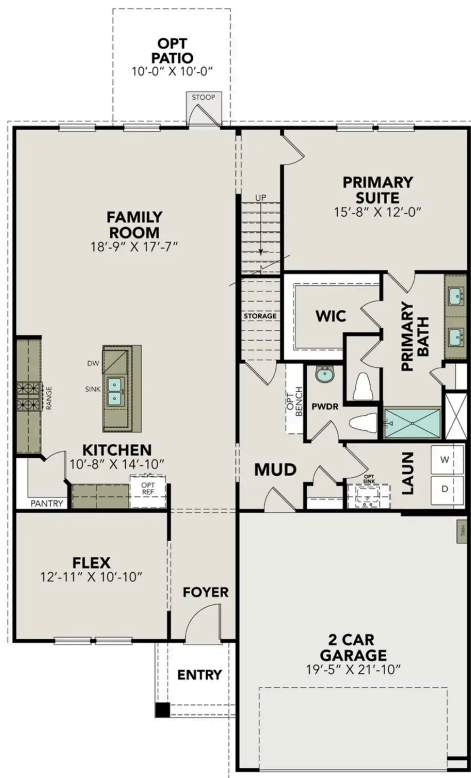


**BEDS**  
**3**

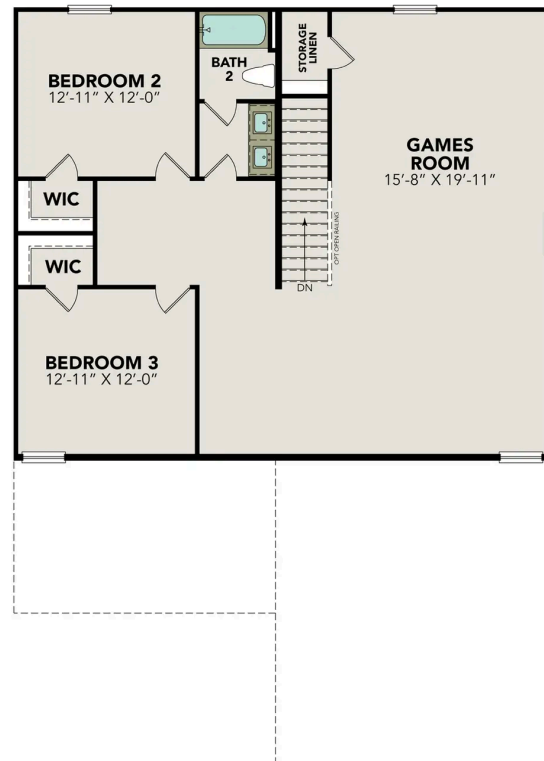
**BATHS**  
**2.5**

**SQ FT**  
**2,738**

**PARKING**  
**2**



**MAIN FLOOR PLAN**



**UPPER FLOOR PLAN**

## The Douglas E

Welcome to The Douglas! Behind this charming two-story exterior lies three bedrooms and plenty of space. The main floor features the primary suite, while the family room leads to the optional patio. Upstairs you'll find two additional bedrooms and a game room, perfect for multi-generational families!

Make it your own with The Douglas' flexible floor plan, featuring the optional guest retreat. Just know that offerings vary by location, so please discuss our standard features and upgrade options with your community's agent.

BEDS  
**3**

BATHS  
**2.5**

SQ FT  
**2,738**

GARAGE  
**2**



**OPT  
GUEST  
RETREAT**  
OPTIONS