

Comanche Ridge

Davidson Homes in San Antonio, TX

Welcome to Comanche Ridge, a coming soon community brought to you by Davidson Homes, nestled in scenic San Antonio. Discover a community rich in beauty and convenience, exquisitely designed with your lifestyle in mind.

Local Schools

Fox Run Elementary
Wood Middle
Madison High
Northeast ISD

Utilities

Electric: CPS
Water: SAWS



Community Address

15307 Comanche Place

Floor Plans

04

Homes from the

\$300s

Copyright 2024 Davidson Homes, Inc. | All Rights Reserved | Davidson Homes is a leading builder of quality new homes across the Southeast. Davidson Homes reserves the right to adjust items listed without prior notice or obligation. Such items may include, but are not limited to, options, included features and community information, pricing, amenities, square footage, terms or availability. Features, options, floor plans, elevations, colors, dimensions and photographs are for illustration purposes and may vary from homes built. Please see your community specialist for details. Equal housing lender. Last Updated 05/20/2024.





Comanche Ridge in San Antonio, TX

Community Homesite Map

Marcela Canales

Call (210) 880-1017

COMANCHE RIDGE

San Antonio, Texas



The Asheville I

Exterior Options

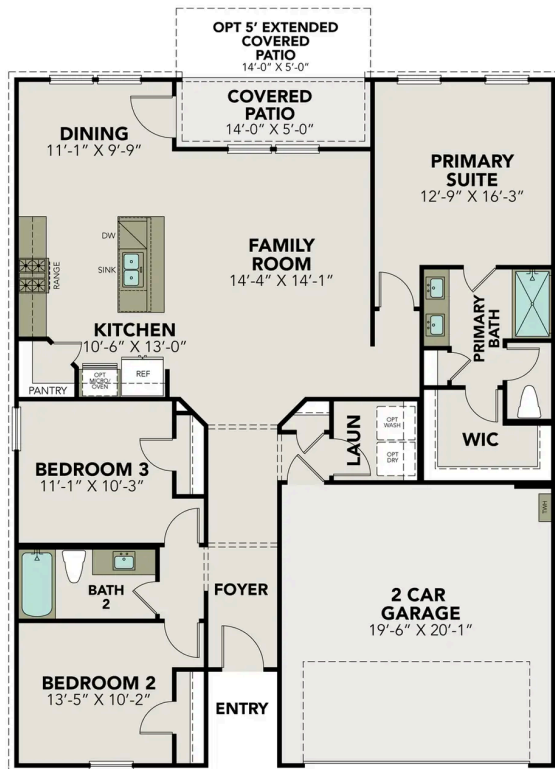


BEDS
3

BATHS
2

SQ FT
1,428

PARKING
2



MAIN FLOOR PLAN



**OPT EXTENDED
COVERED
PATIO**

OPTIONS

The Daphne I

Exterior Options

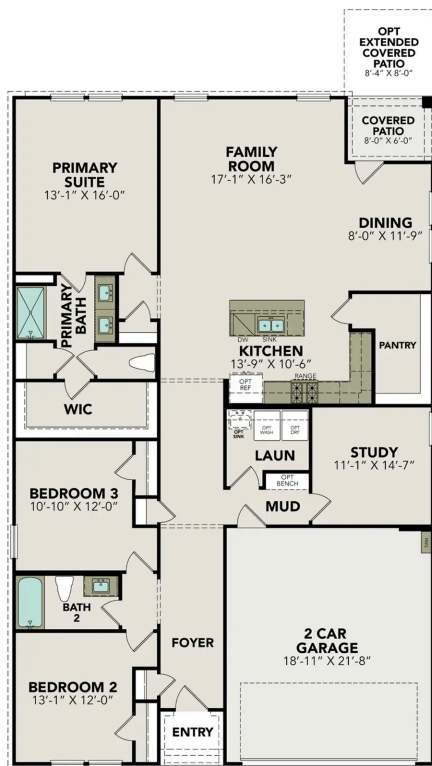


BEDS
3

BATHS
2

SQ FT
1,917

PARKING
2



MAIN FLOOR PLAN



OPTIONS



OPT EXTENDED COVERED PATIO

The Murray I

Exterior Options

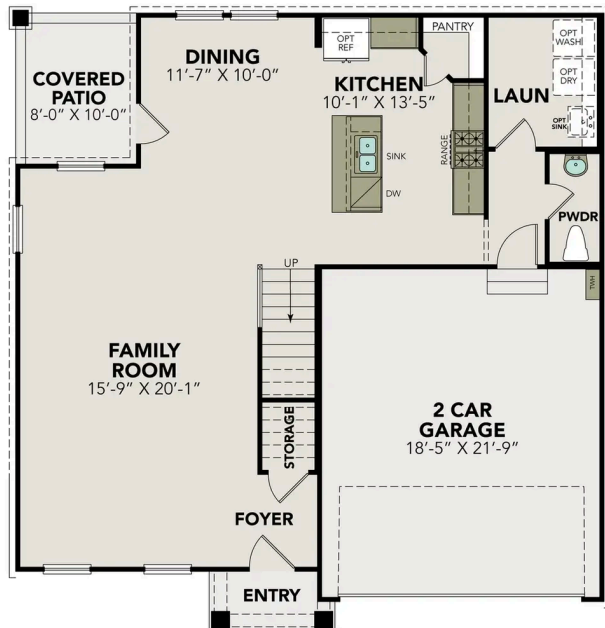


BEDS
4

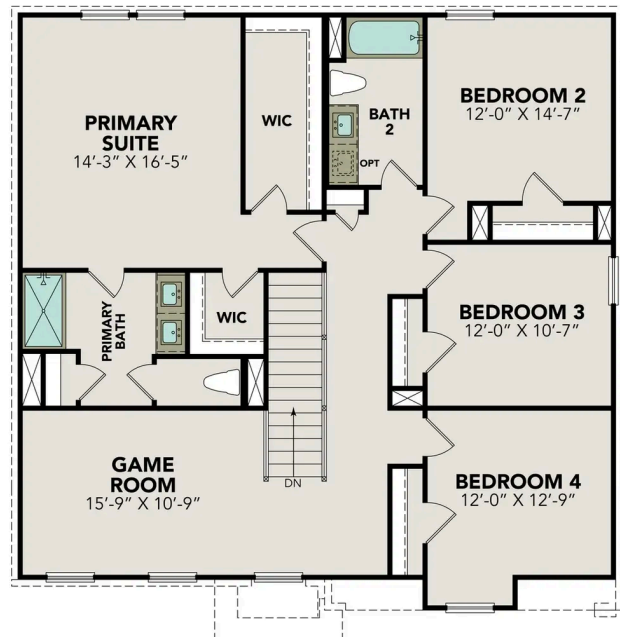
BATHS
2.5

SQ FT
2,397

PARKING
2



MAIN FLOOR PLAN



UPPER FLOOR PLAN

The Murray I

The Murray is a spacious two-story home that boasts an open-concept floor plan perfect for modern living. The main floor features a welcoming foyer that leads to a sprawling family room, which is bathed in natural light thanks to its large windows. The family room seamlessly flows into the dining area and kitchen, creating a perfect space for entertaining guests or spending quality time with loved ones. The second floor of The Murray is dedicated to rest and relaxation, featuring a spacious versatile game room, primary suite and three additional bedrooms.

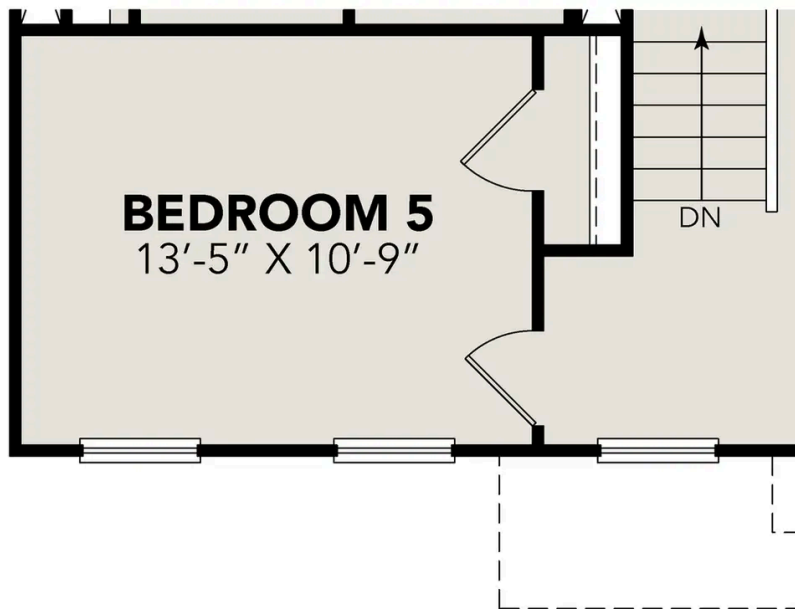
Make it your own with The Murray's flexible floor plan. Just know that offerings vary by location, so please discuss our standard features and upgrade options... with your community's agent.

BEDS
4

BATHS
2.5

SQ FT
2,397

GARAGE
2



OPT BEDROOM 5

OPTIONS

The Douglas E

Exterior Options

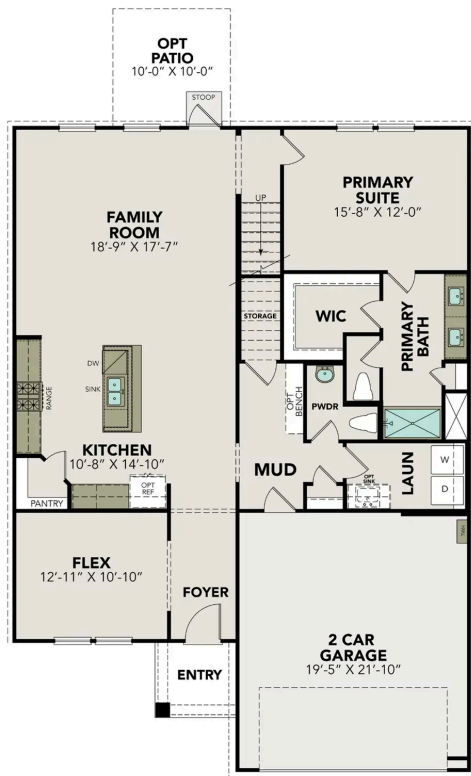


BEDS
3

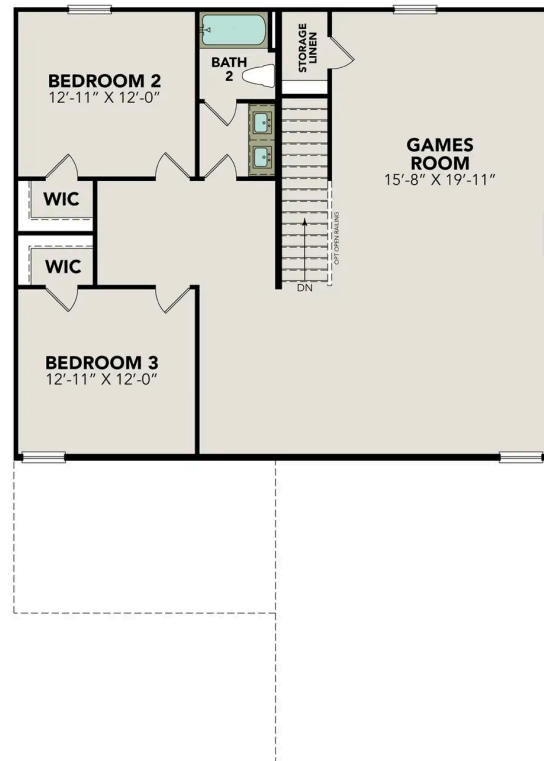
BATHS
2.5

SQ FT
2,738

PARKING
2



MAIN FLOOR PLAN



UPPER FLOOR PLAN

The Douglas E

Welcome to The Douglas! Behind this charming two-story exterior lies three bedrooms and plenty of space. The main floor features the primary suite, while the family room leads to the optional patio. Upstairs you'll find two additional bedrooms and a game room, perfect for multi-generational families!

Make it your own with The Douglas' flexible floor plan, featuring the optional guest retreat. Just know that offerings vary by location, so please discuss our standard features and upgrade options with your community's agent.

BEDS
3

BATHS
2.5

SQ FT
2,738

GARAGE
2



**OPT
GUEST
RETREAT**
OPTIONS