

Hickory Ridge

Davidson Homes in Elmendorf, TX

Experience exceptional living at Hickory Ridge, an upcoming vibrant community in charming Elmendorf, TX. Nestled in the serene landscape, our new homes in Hickory Ridge are thoughtfully designed to grace luxurious comfort, exemplifying Davidson Homes' commitment to quality and style. Whether you're raising a family or starting a new chapter, the exceptional living experience at Hickory Ridge awaits you, where every moment spent becomes a cherished memory.

Features

Pool
Clubhouse
Lazy River

Local Schools

Harmony Elementary
Heritage Middle
East Central High

Utilities

Gas: Centric Gas
Electric: CPS
Water: SAWS



Community Address

Hazel Birch

New Homes

03

Floor Plans

04

Homes from the

\$250s

Copyright 2024 Davidson Homes, Inc. | All Rights Reserved | Davidson Homes is a leading builder of quality new homes across the Southeast. Davidson Homes reserves the right to adjust items listed without prior notice or obligation. Such items may include, but are not limited to, options, included features and community information, pricing, amenities, square footage, terms or availability. Features, options, floor plans, elevations, colors, dimensions and photographs are for illustration purposes and may vary from homes built. Please see your community specialist for details. Equal housing lender. Last Updated 05/20/2024.





Hickory Ridge in Elmendorf, TX

Quick Move-In Homes

Call (210) 742-5050

UPDATED

05/20/2024

HOMES

03

COMMUNITY ADDRESS

Hazel Birch

Sep '24



\$309,206

3 Beds 2 Baths 1,917 Sq Ft

16519 Rosemary Ridge | #13-01

The Daphne H Plan

Sep '24



\$325,835

4 Beds 2.5 Baths 2,397 Sq Ft

16523 Rosemary Ridge | #14-01

The Murray G Plan

Oct '24



\$270,716

3 Beds 2 Baths 1,428 Sq Ft

16527 Rosemary Ridge | #15-01

The Asheville E Plan





Hickory Ridge in Elmendorf, TX

Community Homesite Map

Call (210) 742-5050



HICKORY RIDGE

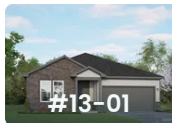
Elmendorf, Texas

 QUICK MOVE-IN

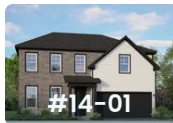
 COMING SOON

 AVAILABLE

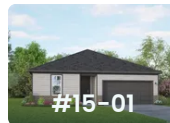
Featured Homes for Sale



The Daphne H
16519 Rosemary Ridge
\$309,206



The Murray G
16523 Rosemary Ridge
\$325,835



The Asheville E
16527 Rosemary Ridge
\$270,716



The Asheville E



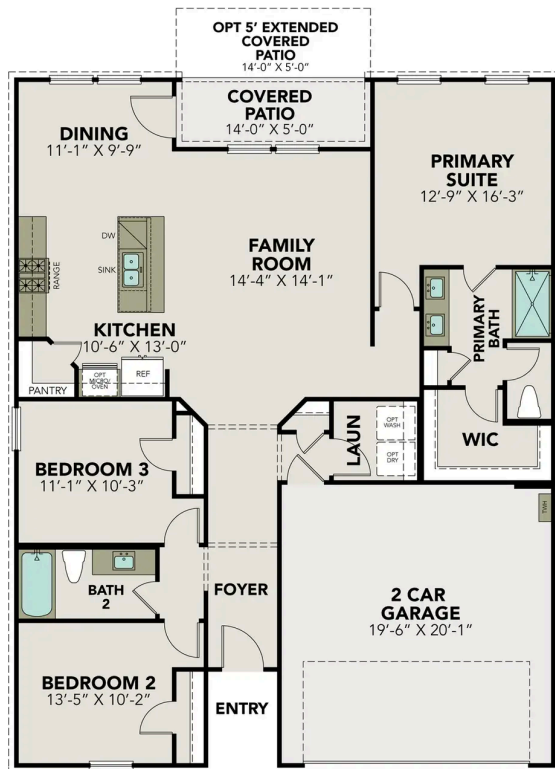
BEDS
3

BATHS
2

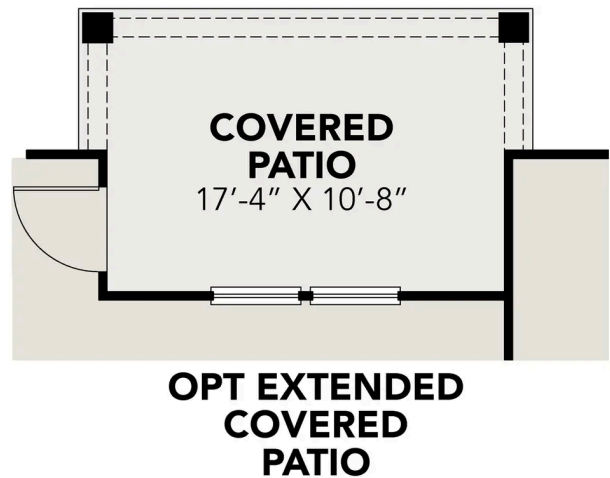
SQ FT
1,428

PARKING
2

Exterior Options



MAIN FLOOR PLAN



OPTIONS

The Daphne E



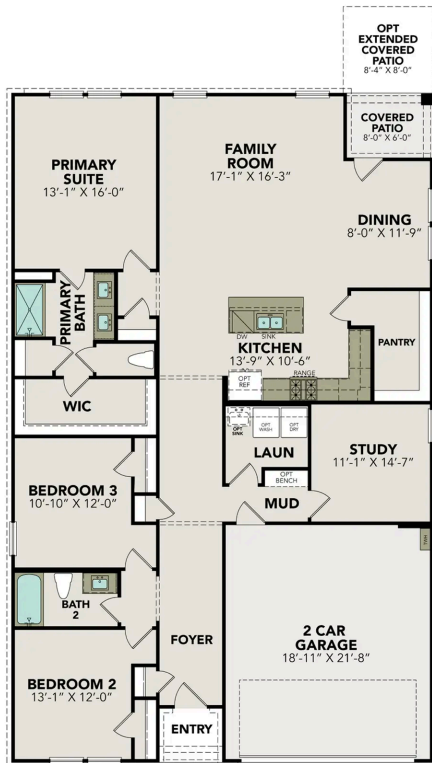
BEDS
3

BATHS
2

SQ FT
1,917

PARKING
2

Exterior Options



MAIN FLOOR PLAN



OPTIONS



The Murray F

Exterior Options

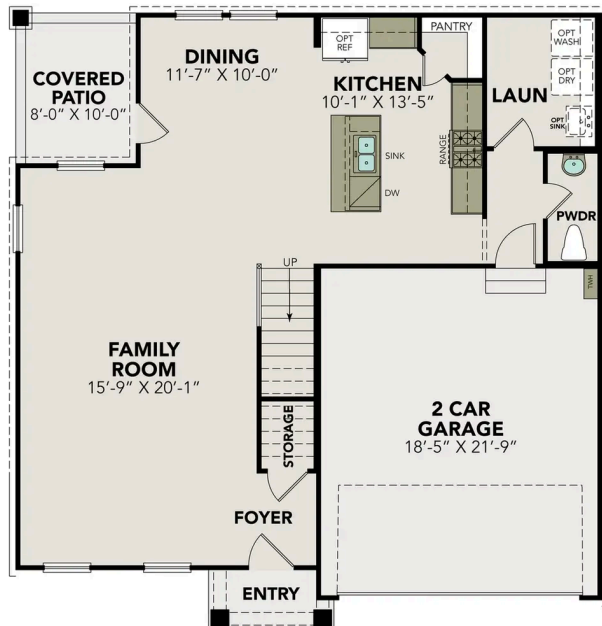


BEDS
4

BATHS
2.5

SQ FT
2,397

PARKING
2



MAIN FLOOR PLAN



UPPER FLOOR PLAN

The Murray F

The Murray is a spacious two-story home that boasts an open-concept floor plan perfect for modern living. The main floor features a welcoming foyer that leads to a sprawling family room, which is bathed in natural light thanks to its large windows. The family room seamlessly flows into the dining area and kitchen, creating a perfect space for entertaining guests or spending quality time with loved ones. The second floor of The Murray is dedicated to rest and relaxation, featuring a spacious versatile game room, primary suite and three additional bedrooms.

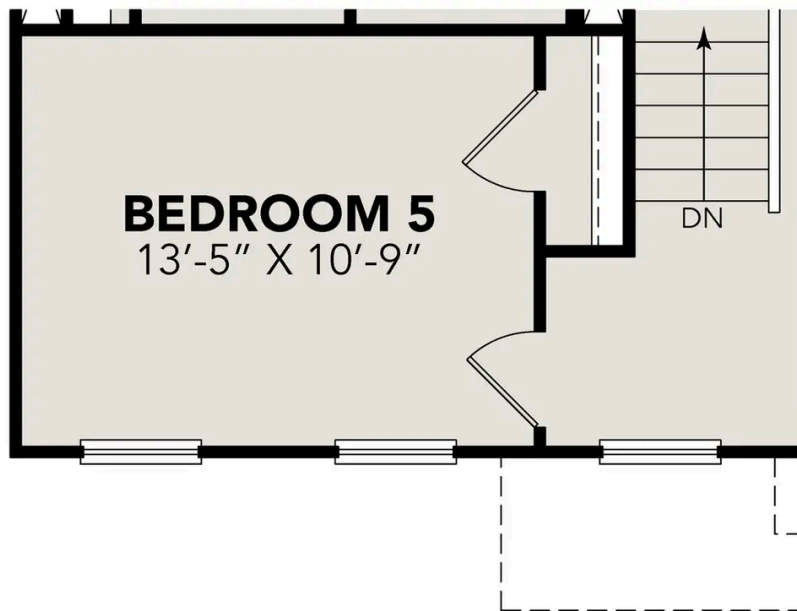
Make it your own with The Murray's flexible floor plan. Just know that offerings vary by location, so please discuss our standard features and upgrade options... with your community's agent.

BEDS
4

BATHS
2.5

SQ FT
2,397

GARAGE
2



OPT BEDROOM 5 OPTIONS

The Douglas B

Exterior Options

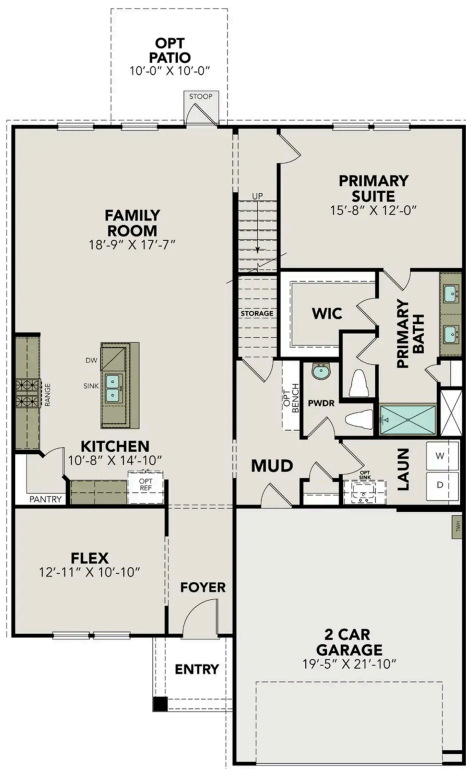


BEDS
3

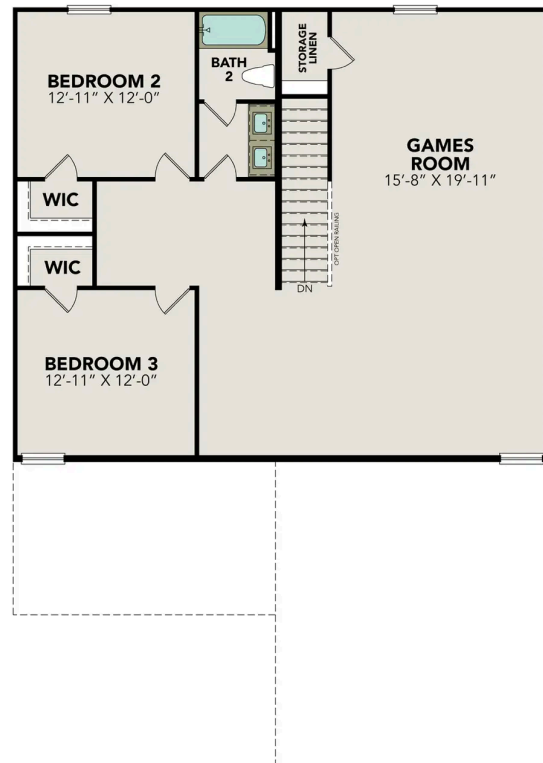
BATHS
2.5

SQ FT
2,738

PARKING
2



MAIN FLOOR PLAN



UPPER FLOOR PLAN

The Douglas B

Welcome to The Douglas! Behind this charming two-story exterior lies three bedrooms and plenty of space. The main floor features the primary suite, while the family room leads to the optional patio. Upstairs you'll find two additional bedrooms and a game room, perfect for multi-generational families!

Make it your own with The Douglas' flexible floor plan, featuring the optional guest retreat. Just know that offerings vary by location, so please discuss our standard features and upgrade options with your community's agent.

BEDS
3

BATHS
2.5

SQ FT
2,738

GARAGE
2



OPT GUEST RETREAT

OPTIONS