

Pavilion

Davidson Homes in Huntsville, AL

Welcome to Pavilion, the newest community from Davidson Homes in Huntsville, AL. As the premier home builder in the area, we are excited to offer stunning townhouses that will fill you with pride and comfort.

This community is conveniently located near Highway 231, putting you within easy reach of all that Huntsville has to offer. Plus, residents will love the nearby McGucken Park for outdoor activities and family fun. When you're ready to hit the links, head over to the Valley Hill Country Club, just a short 5-mile drive away.

Features

Located Near HWY 231
Mountain Views
Close to McGucken Park

Local Schools

Challenger Elementary
Challenger Middle
Virgil Grissom High

Utilities

Electric: Huntsville Utilities
Water: Huntsville Utilities



Community Address

1715 Stampede Circle SE

New Homes

03

Floor Plans

04

Homes from the

\$300s

Copyright 2024 Davidson Homes, Inc. | All Rights Reserved | Davidson Homes is a leading builder of quality new homes across the Southeast. Davidson Homes reserves the right to adjust items listed without prior notice or obligation. Such items may include, but are not limited to, options, included features and community information, pricing, amenities, square footage, terms or availability. Features, options, floor plans, elevations, colors, dimensions and photographs are for illustration purposes and may vary from homes built. Please see your community specialist for details. Equal housing lender. Last Updated 05/20/2024.





Pavilion in Huntsville, AL

Quick Move-In Homes

Chandlar Wirick
Call (256) 900-8231



UPDATED
05/20/2024

HOMES
03

COMMUNITY ADDRESS
1715 Stampede Circle SE



\$314,900

3 Beds 2.5 Baths 2,223 Sq Ft

1717 Stampede Circle | #23

The Camden B Plan



\$314,900

3 Beds 2.5 Baths 2,223 Sq Ft

1721 Stampede Circle | #25

The Camden D Plan



~~\$316,622~~ **\$304,900**

3 Beds 2.5 Baths 2,223 Sq Ft

1723 Stampede Circle | #26

The Camden Plan





Pavilion in Huntsville, AL

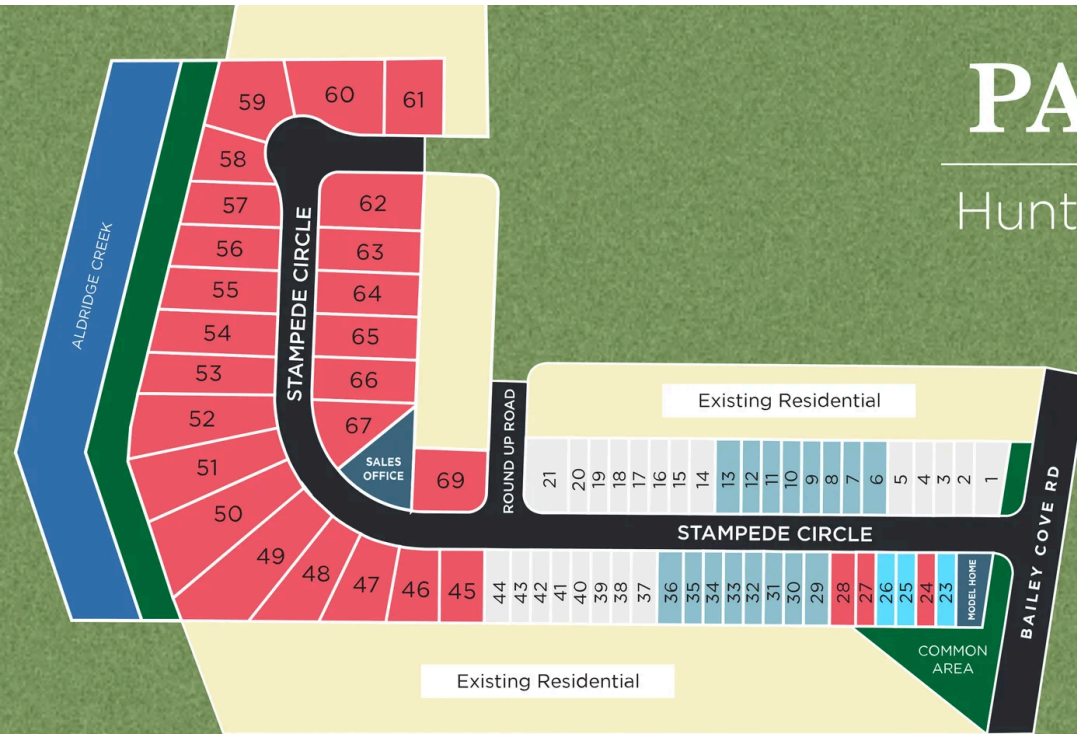
Community Homesite Map

Chandlar Wirick
Call (256) 900-8231



PAVILION

Huntsville, Alabama

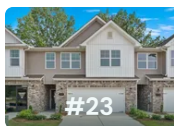


MOVE-IN READY

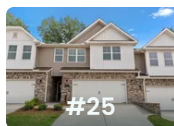
COMING SOON

SOLD

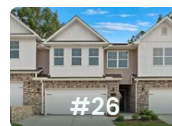
Featured Homes for Sale



The Camden B
1717 Stamped Circle
\$314,900



The Camden D
1721 Stamped Circle
\$314,900



The Camden
1723 Stamped Circle
\$304,900



The Camden



Description

The Camden Floor Plan introduces a charismatic 2,198 square foot townhome that combines contemporary functionality with classic charm. As you approach the property, you are welcomed by a two-car garage and a delightful covered porch leading to a spacious foyer.

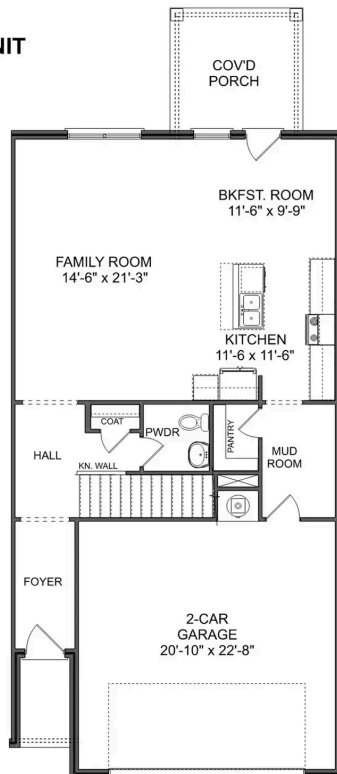
BEDS
3

BATHS
2.5

SQ FT
2,198

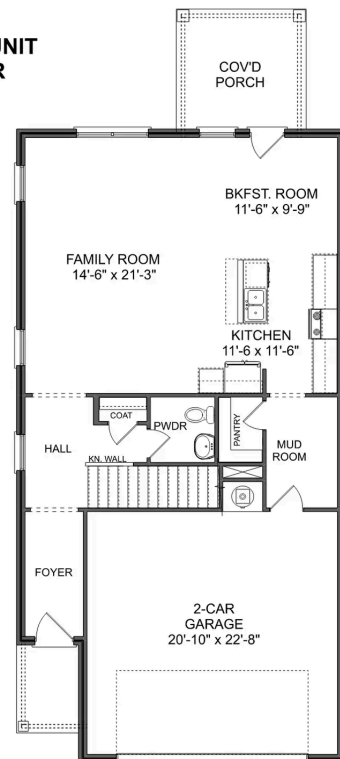
PARKING
2

**CAMDEN INT. UNIT
MAIN FLOOR**



THE CAMDEN A INTERIOR UNIT MAIN FLOOR

**CAMDEN EXT. UNIT
MAIN FLOOR**



THE CAMDEN A EXTERIOR UNIT MAIN FLOOR

The Camden

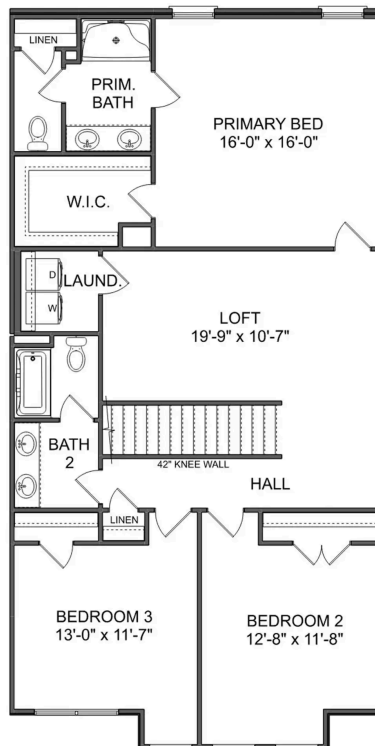
The Camden Floor Plan introduces a charismatic 2,198 square foot townhome that combines contemporary functionality with classic charm. As you approach the property, you are welcomed by a two-car garage and a delightful covered porch leading to a spacious foyer. Immediately, the home reveals an open concept layout, marrying the dining, living, and kitchen areas seamlessly. The kitchen boasts high-quality stainless-steel appliances and recessed lighting, creating a bright and modern ambiance for preparing meals. Adjacent to the kitchen, a convenient mudroom provides a practical space for outerwear and storage, further adding to the practical aspects of the floor plan. The living area, with its optional tile features, provides the perfect place to gather for cozy evenings or entertaining guests.

BEDS
3

BATHS
2.5

SQ FT
2,198

GARAGE
2



THE CAMDEN A UPPER FLOOR

The Camden B



Description

The Camden Floor Plan introduces a charismatic 2,198 square foot townhome that combines contemporary functionality with classic charm. As you approach the property, you are welcomed by a two-car garage and a delightful covered porch leading to a spacious foyer.

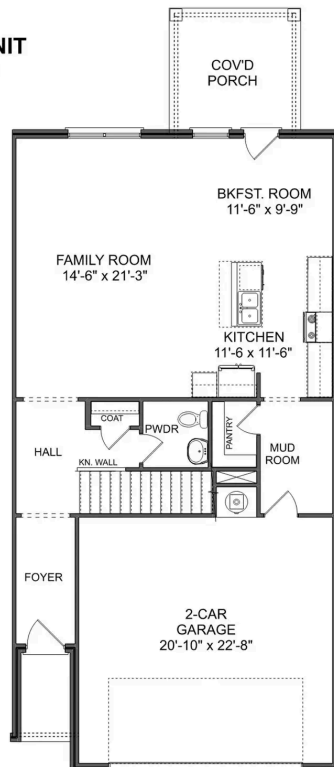
BEDS
3

BATHS
2.5

SQ FT
2,198

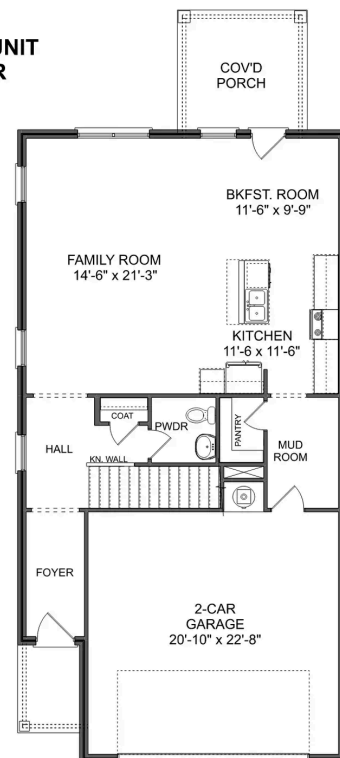
PARKING
2

**CAMDEN INT. UNIT
MAIN FLOOR**



THE CAMDEN B INTERIOR UNIT MAIN FLOOR

**CAMDEN EXT. UNIT
MAIN FLOOR**



THE CAMDEN B EXTERIOR UNIT MAIN FLOOR

The Camden B

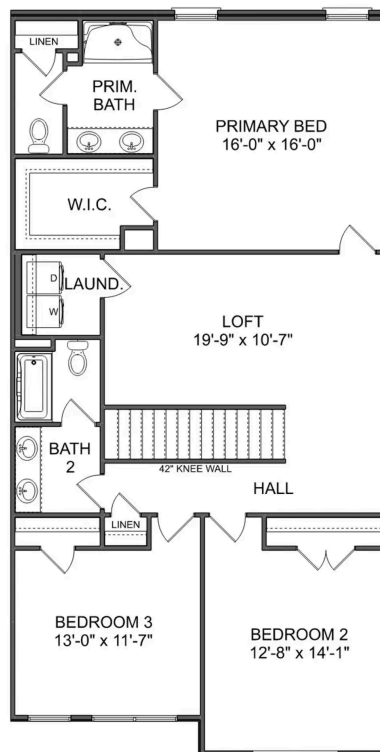
The Camden Floor Plan introduces a charismatic 2,198 square foot townhome that combines contemporary functionality with classic charm. As you approach the property, you are welcomed by a two-car garage and a delightful covered porch leading to a spacious foyer. Immediately, the home reveals an open concept layout, marrying the dining, living, and kitchen areas seamlessly. The kitchen boasts high-quality stainless-steel appliances and recessed lighting, creating a bright and modern ambiance for preparing meals. Adjacent to the kitchen, a convenient mudroom provides a practical space for outerwear and storage, further adding to the practical aspects of the floor plan. The living area, with its optional tile features, provides the perfect place to gather for cozy evenings or entertaining guests.

BEDS
3

BATHS
2.5

SQ FT
2,198

GARAGE
2



THE CAMDEN B UPPER FLOOR

The Camden C



Description

The Camden Floor Plan introduces a charismatic 2,198 square foot townhome that combines contemporary functionality with classic charm. As you approach the property, you are welcomed by a two-car garage and a delightful covered porch leading to a spacious foyer.

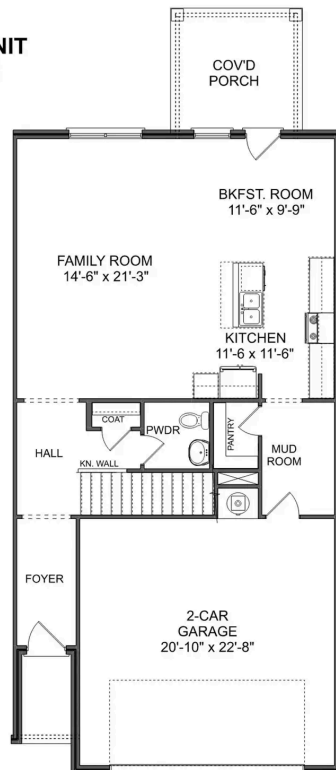
BEDS
3

BATHS
2.5

SQ FT
2,198

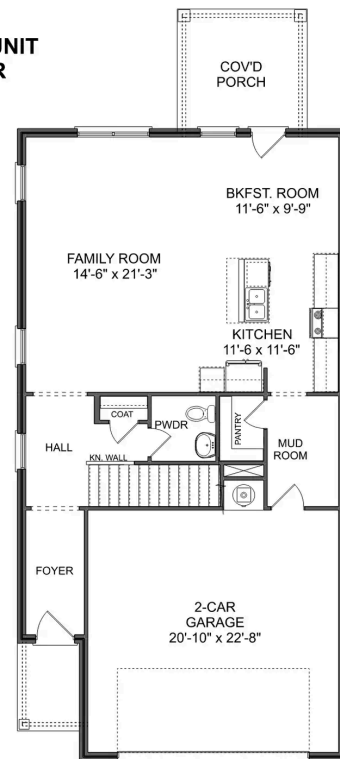
PARKING
2

**CAMDEN INT. UNIT
MAIN FLOOR**



THE CAMDEN C INTERIOR UNIT MAIN FLOOR

**CAMDEN EXT. UNIT
MAIN FLOOR**



THE CAMDEN C EXTERIOR UNIT MAIN FLOOR

The Camden C

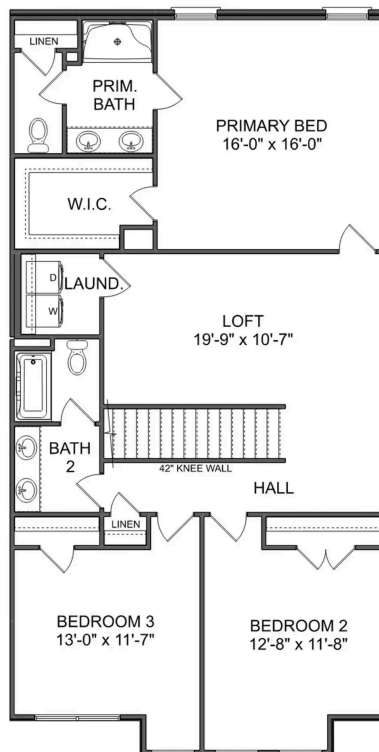
The Camden Floor Plan introduces a charismatic 2,198 square foot townhome that combines contemporary functionality with classic charm. As you approach the property, you are welcomed by a two-car garage and a delightful covered porch leading to a spacious foyer. Immediately, the home reveals an open concept layout, marrying the dining, living, and kitchen areas seamlessly. The kitchen boasts high-quality stainless-steel appliances and recessed lighting, creating a bright and modern ambiance for preparing meals. Adjacent to the kitchen, a convenient mudroom provides a practical space for outerwear and storage, further adding to the practical aspects of the floor plan. The living area, with its optional tile features, provides the perfect place to gather for cozy evenings or entertaining guests.

BEDS
3

BATHS
2.5

SQ FT
2,198

GARAGE
2



THE CAMDEN C UPPER FLOOR

The Camden D



Description

The Camden Floor Plan introduces a charismatic 2,198 square foot townhome that combines contemporary functionality with classic charm. As you approach the property, you are welcomed by a two-car garage and a delightful covered porch leading to a spacious foyer.

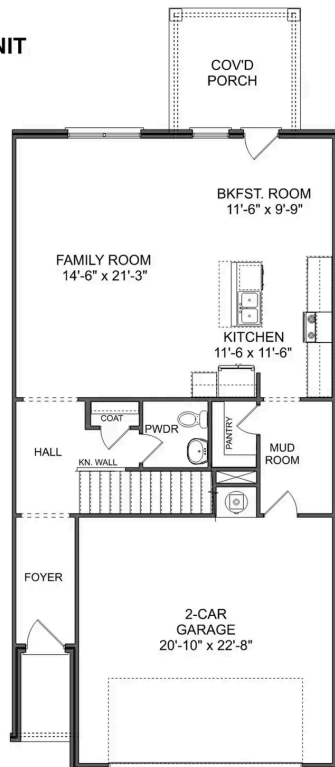
BEDS
3

BATHS
2.5

SQ FT
2,198

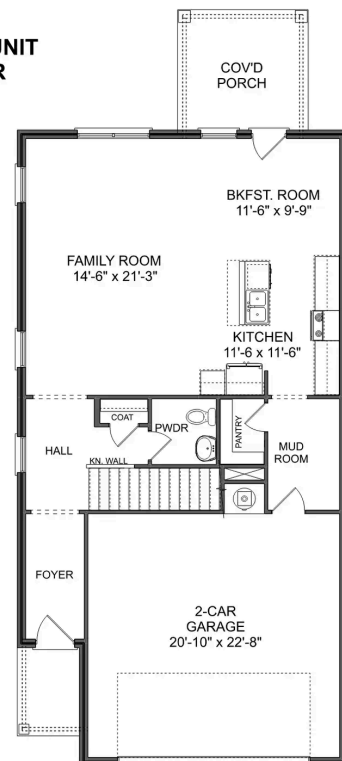
PARKING
2

**CAMDEN INT. UNIT
MAIN FLOOR**



THE CAMDEN D INTERIOR UNIT MAIN FLOOR

**CAMDEN EXT. UNIT
MAIN FLOOR**



THE CAMDEN D EXTERIOR UNIT MAIN FLOOR

The Camden D

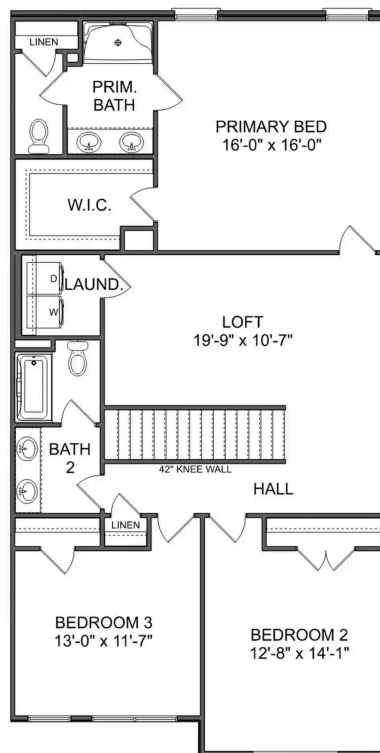
The Camden Floor Plan introduces a charismatic 2,198 square foot townhome that combines contemporary functionality with classic charm. As you approach the property, you are welcomed by a two-car garage and a delightful covered porch leading to a spacious foyer. Immediately, the home reveals an open concept layout, marrying the dining, living, and kitchen areas seamlessly. The kitchen boasts high-quality stainless-steel appliances and recessed lighting, creating a bright and modern ambiance for preparing meals. Adjacent to the kitchen, a convenient mudroom provides a practical space for outerwear and storage, further adding to the practical aspects of the floor plan. The living area, with its optional tile features, provides the perfect place to gather for cozy evenings or entertaining guests.

BEDS
3

BATHS
2.5

SQ FT
2,198

GARAGE
2



THE CAMDEN D UPPER FLOOR