

Kelly Preserve

Davidson Homes in Loganville, GA

Welcome to Kelly Preserve, a gated enclave located in Loganville, Georgia. This active adult (55+) community was expertly designed for those seeking an active and laid-back lifestyle.

Revel in our spacious ranch-style homes, complete with a clubhouse, pool, and fire pit, epitomizing luxury and comfort. You will love the convenience of included professional lawn care and being in a prime location. Downtown Snellville, Downtown Grayson, The Shoppes at Webb Gin and Scenic Square are all just a few minutes away and provide excellent shopping, dining, and entertainment options.

Features

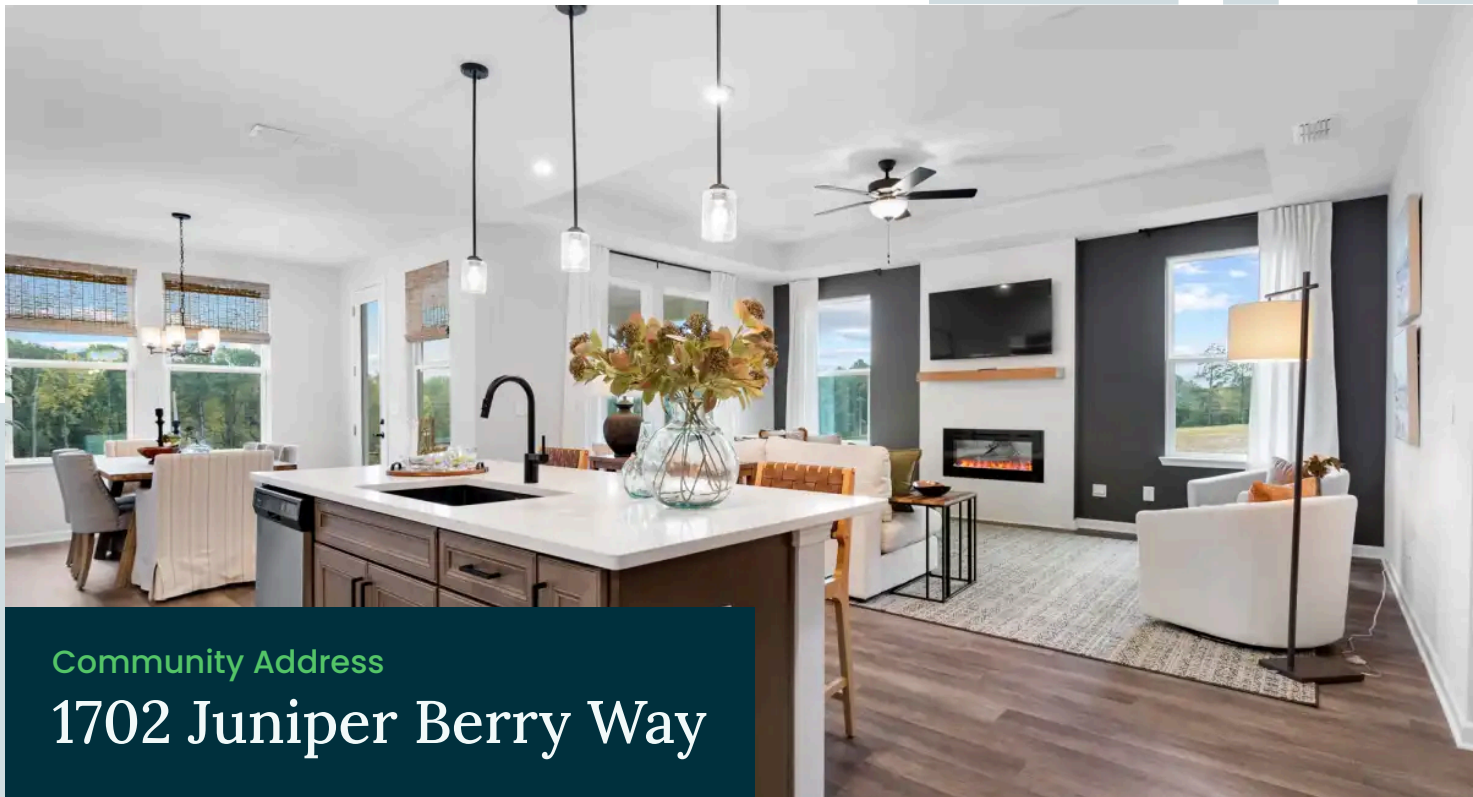
Active Adult Community
Gated Enclave
Pool and Clubhouse

Local Schools

Magill Elementary
Grace Snell Middle
South Gwinnett High

Utilities

Electric: Walton EMC
Water: Gwinnett County
Internet: Comcast



Community Address

1702 Juniper Berry Way

New Homes

04

Floor Plans

03

Homes from the

\$390s

Copyright 2024 Davidson Homes, Inc. | All Rights Reserved | Davidson Homes is a leading builder of quality new homes across the Southeast. Davidson Homes reserves the right to adjust items listed without prior notice or obligation. Such items may include, but are not limited to, options, included features and community information, pricing, amenities, square footage, terms or availability. Features, options, floor plans, elevations, colors, dimensions and photographs are for illustration purposes and may vary from homes built. Please see your community specialist for details. Equal housing lender. Last Updated 05/12/2024.





Kelly Preserve in Loganville, GA

Quick Move-In Homes

Tiffany D. & Alecia T.
Call (678) 578-5211



LIMITED TIME ONLY

Save **\$10,000** in
Closing Costs!

PLUS, ENJOY A
\$5,500*
MOVE-IN PACKAGE!

LEARN MORE →

*On select homes.
See link for terms/conditions.

UPDATED
05/12/2024

HOMES
04

COMMUNITY ADDRESS
1702 Juniper Berry Way



\$429,072

2 Beds 2 Baths 1,836 Sq Ft

1653 Juniper Berry Way | #5

The Dawson A Plan



\$416,258

2 Beds 2 Baths 1,836 Sq Ft

3414 Arrow Root Circle | #9

The Dawson B Plan



\$424,673

3 Beds 2 Baths 2,001 Sq Ft

1672 Juniper Berry Way | #45

The Edison C Plan



\$431,765

3 Beds 2.5 Baths 2,200 Sq Ft

1763 Juniper Berry Way | #81

The Glenwood D Plan

Copyright 2024 Davidson Homes, Inc. | All Rights Reserved | Davidson Homes is a leading builder of quality new homes across the Southeast. Davidson Homes reserves the right to adjust items listed without prior notice or obligation. Such items may include, but are not limited to, options, included features and community information, pricing, amenities, square footage, terms or availability. Features, options, floor plans, elevations, colors, dimensions and photographs are for illustration purposes and may vary from homes built. Please see your community specialist for details. Equal housing lender.



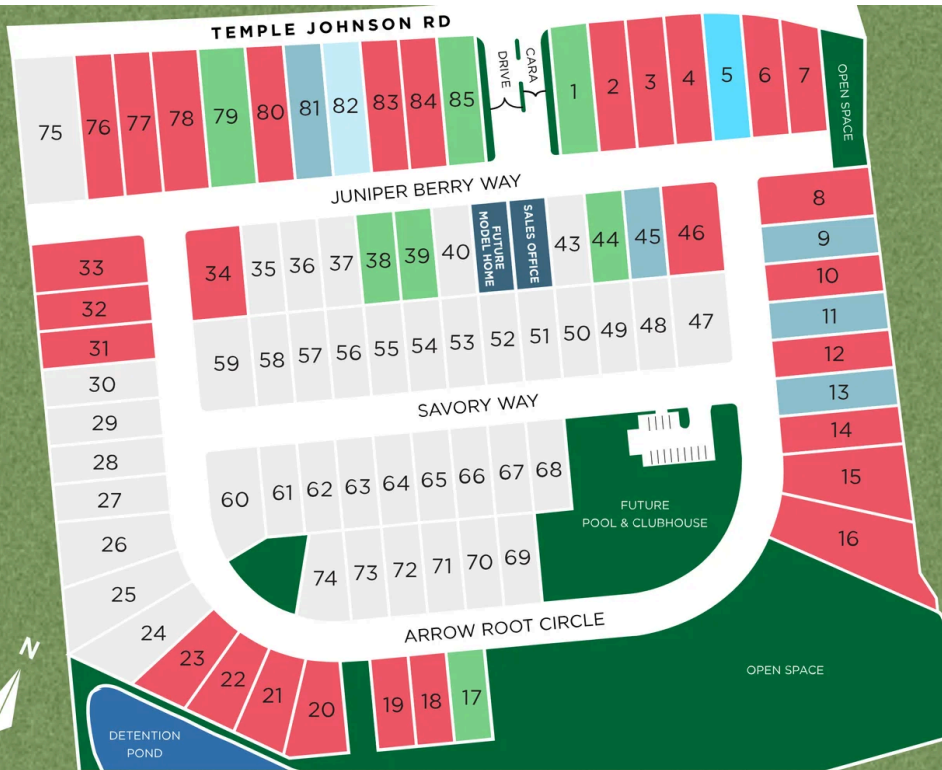


Kelly Preserve in Loganville, GA

Community Homesite Map

Tiffany D. & Alecia T.

Call (678) 578-5211

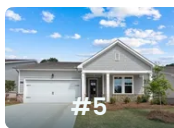


KELLY PRESERVE

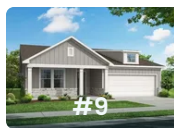
Loganville, Georgia

MOVE-IN READY QUICK MOVE-IN COMING SOON AVAILABLE SOLD

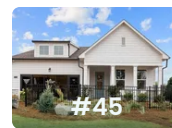
Featured Homes for Sale



The Dawson A
1653 Juniper Berry Way
\$429,072



The Dawson B
3414 Arrow Root Circle
\$416,258



The Edison C
1672 Juniper Berry Way
\$424,673



The Glenwood D
1763 Juniper Berry Way
\$431,765



The Dawson C



BEDS
2

BATHS
2

SQ FT
1,836

PARKING
2

Exterior Options



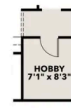
DAWSON FLOOR PLAN



OPT. FIREPLACE



OPT. LINEAR FIRE PLACE



OPT. HOBBY I/O
GARAGE STORAGE



OPT. TECH



OPT. SCREENED PATIO

The Edison C



BEDS
3

BATHS
2

SQ FT
2,001

PARKING
2

Exterior Options



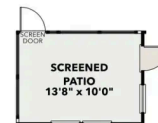
EDISON FLOOR PLAN



OPT. LINEAR FIRE PLACE



OPT. FIREPLACE



OPT. SCREENED PORCH

The Glenwood D



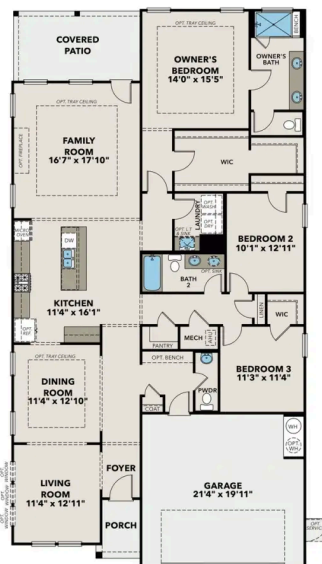
BEDS
3

BATHS
2.5

SQ FT
2,200

PARKING
2

Exterior Options



GLENWOOD FLOOR PLAN



OPT. DELUXE BATH



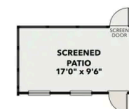
OPT. STUDY ILO LIVING



OPT. FIREPLACE



OPT. LINEAR FIREPLACE



OPT. SCREENED PATIO